

**WINTERS**



*We're There.*



## WASTE WATER PRODUCTS



### PPC Process Gauge

The PPC Series gauge is a durable gauge with a phenolic solid front and pressure relief back safety case. Use the PPC in situations where user safety is a must such as in the presence of contaminated media.

|                   |   |
|-------------------|---|
| <b>Dial Size</b>  | 4.5"  |
| <b>Case</b>       | Black phenolic with pressure relief back, solid front, integral back flange |
| <b>Accuracy</b>   | ±0.5% ANSI/ASME Grade 2A  |
| <b>Range</b>      | Vac to 20,000 psi   |
| <b>Connection</b> | 1/4" or 1/2" NPT, bottom or back, brass* or SS                              |
| <b>Warranty</b>   | 5 years   |



### PPC-ZR StabilizR™ Process Gauge

The PPC-ZR StabilizR™ gauge dampens movement and minimizes the effects of pulsation and vibration without liquid filling. Ideal for processes where chemical compatibility and vibration are a concern.

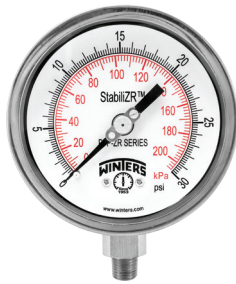
|                   |   |
|-------------------|---|
| <b>Dial Size</b>  | 4.5"  |
| <b>Case</b>       | Black phenolic with pressure relief back, solid front, integral back flange |
| <b>Accuracy</b>   | ±0.5% ANSI/ASME Grade 2A  |
| <b>Range</b>      | Vac to 20,000 psi   |
| <b>Connection</b> | 1/4" or 1/2" NPT, bottom or back, brass* or SS                              |
| <b>Warranty</b>   | 5 years   |



### PFP Premium Stainless Steel Liquid Filled Gauge

This gauge features a pulsation resistant, liquid filled stainless steel case with either brass or stainless steel internals. Ideal for use outdoors or in severe ambient and process conditions.

|                   |  |
|-------------------|--|
| <b>Dial Size</b>  | 2.5", 4", 4.5" and 6", panel mount   |
| <b>Case</b>       | AISI 304 SS  |
| <b>Accuracy</b>   | 2.5": ±1.5%, 4" to 6": ±1% ANSI/ASME Grade 1A  |
| <b>Range</b>      | Vac to 40,000 psi  |
| <b>Connection</b> | 1/4" or 1/2" NPT - bottom, centre or lower back, high pressure and 9/16", brass* or SS |
| <b>Warranty</b>   | 5 years  |



### PFP-ZR Premium Stainless Steel StabilizR™ Gauge

PFP-ZR utilizes a precision designed dampening mechanism to minimize the effects of pulsation and vibration. The gauge is suited for applications where corrosiveness and pulsation are a concern.

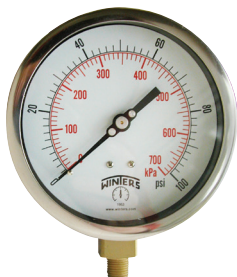
|                   |  |
|-------------------|--|
| <b>Dial Size</b>  | 2.5", 4" and 6"  |
| <b>Case</b>       | AISI 304 SS  |
| <b>Accuracy</b>   | 2.5": ±1.5% of full scale, 4" and 6": ±1% ANSI/ASME Grade 1A |
| <b>Range</b>      | Vac to 20,000 psi  |
| <b>Connection</b> | 2.5": 1/4" NPT, 4" and 6": 1/4" or 1/2" NPT                  |
| <b>Warranty</b>   | 5 years  |



### PFQ Stainless Steel Liquid Filled Gauge

The PFQ Series gauge is a durable stainless steel gauge that can withstand pulsation and vibration, making it an ideal choice for pumps, compressors and motors operating in harsh environments.

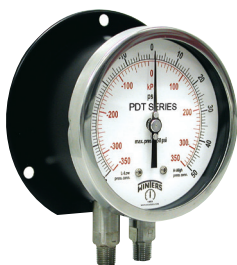
|                   |   |
|-------------------|---|
| <b>Dial Size</b>  | 1.5", 2", 2.5" and 4"   |
| <b>Case</b>       | AISI 304 SS   |
| <b>Accuracy</b>   | 1.5" and 2": ±2.5% of full scale, 2.5" and 4": ±1.5% of full scale          |
| <b>Range</b>      | Vac to 15,000 psi   |
| <b>Connection</b> | 1/8", 1/4" and 1/2" NPT bottom or back or 7/16"-20 SAE bottom, brass* or SS |
| <b>Warranty</b>   | 5 years   |



## P3S Series Gauge

The P3S gauge is a heavy duty, highly accurate aluminum case gauge with brass or stainless steel internals. Use the P3S gauge in applications using air, steam, fresh water or in boiler and control rooms.

|                   |   |
|-------------------|---|
| <b>Dial Size</b>  | 4.5", 6", 8.5" and 10"                        |
| <b>Case</b>       | Aluminum painted black                        |
| <b>Accuracy</b>   | ±0.5% ANSI/ASME Grade 2A                      |
| <b>Range</b>      | Vac to 20,000 psi                             |
| <b>Connection</b> | 1/4" or 1/2" NPT bottom or back, brass* or SS |
| <b>Warranty</b>   | 5 years                                       |



## PDT Differential Gauge

This gauge uses brass or stainless steel wetted parts and is available with conventional or balanced scales. The PDT is typically used to measure pressure drops across filters, pumps or other equipment.

|                   |                                       |
|-------------------|---------------------------------------|
| <b>Dial Size</b>  | 4.5" or 6"                            |
| <b>Case</b>       | Aluminum, painted black               |
| <b>Accuracy</b>   | ±1% ANSI/ASME Grade 1A                |
| <b>Range</b>      | 0 to 600 psi                          |
| <b>Connection</b> | 1/4" NPT bottom or back, brass* or SS |
| <b>Warranty</b>   | 5 years                               |



## High Static Pressure Differential Gauges (PPD, PRD, PSD, PVD)

Winters' high static differential pressure gauges utilize four types of sensing elements for a large variety of ranges and are available with switches for actuation. Perfect for filtration systems and leak detection.

|                   |  |
|-------------------|--|
| <b>Dial Size</b>  | 2.5", 3.5", 4", 4.5" and 6" (depending on series)            |
| <b>Case</b>       | Aluminum or engineered plastic (depending on series)         |
| <b>Accuracy</b>   | ±2% of full scale or ±5% of full scale (depending on series) |
| <b>Range</b>      | 5 "H <sub>2</sub> O to 110 psid                              |
| <b>Connection</b> | 1/4", 1/2" NPT or 7/16"-20 SAE                               |
| <b>Warranty</b>   | 5 years  |



## PDX Duplex Gauge

The PDX is a heavy duty, highly accurate gauge that uses two separate bourdon tubes and pointers to compare two separate process pressures at the same time.

|                   |                                       |
|-------------------|---------------------------------------|
| <b>Dial Size</b>  | 4.5" or 6"                            |
| <b>Case</b>       | Aluminum, painted black               |
| <b>Accuracy</b>   | ±1% ANSI/ASME Grade 1A                |
| <b>Range</b>      | 0 to 600 psi                          |
| <b>Connection</b> | 1/4" NPT bottom or back, brass* or SS |
| <b>Warranty</b>   | 5 years                               |



## DPG Digital Pressure Gauge

DPG is a simple to use digital pressure gauge with stainless steel wetted parts including a 316L welded diaphragm. It's ideal for test measurement and general purpose commercial and industrial applications.

|                   |  |
|-------------------|--|
| <b>Dial Size</b>  | 2.5"   |
| <b>Case</b>       | ABS (IP60) with a protective silicone rubber boot. |
| <b>Accuracy</b>   | ±1% (±0.5% optional for gauges up to 5,000 psi)    |
| <b>Range</b>      | Vac to 15,000 psi                                  |
| <b>Connection</b> | 1/4" NPT bottom                                    |
| <b>Warranty</b>   | 1 year   |



### LE3 General Purpose Transmitter

LE3 is a compact general industry stainless steel transmitter suitable for outdoor use. Its wide variety of mechanical and electrical connections makes it ideal for pump and compressor monitoring.

|                 |                  |
|-----------------|------------------|
| <b>Output</b>   | 2-wire 4-20 mA   |
| <b>Housing</b>  | 304 SS           |
| <b>Accuracy</b> | ±0.5% FSO        |
| <b>Range</b>    | Vac to 5,000 psi |
| <b>Sensor</b>   | Ceramic          |
| <b>Warranty</b> | 1 year           |



### LM1 Anti-Clogging Submersible Transmitter

LM1 is a submersible transmitter with a built-in anti-clogging device to resist damage from floating solids. It is internally protected against lightning and includes a dual seal for increased environmental durability.

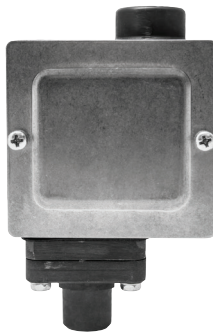
|                 |  |
|-----------------|--|
| <b>Output</b>   | 2-wire 4-20 mA                             |
| <b>Housing</b>  | 316L SS                                    |
| <b>Accuracy</b> | ±0.5% FSO (±0.25% FSO optional)            |
| <b>Range</b>    | 5 to 25 psi (higher ranges also available) |
| <b>Sensor</b>   | 316L                                       |
| <b>Warranty</b> | 1 year                                     |



### LM6 All Stainless Steel Submersible Transmitter

LM6 is designed for continuous level measurement in water or other liquids with low viscosity. Typical installations include ground or tank level monitoring of water and sewage treatment measurement.

|                 |                                |
|-----------------|--------------------------------|
| <b>Output</b>   | 2-wire 4-20 mA                 |
| <b>Housing</b>  | 316L SS                        |
| <b>Accuracy</b> | ±0.35% FSO                     |
| <b>Range</b>    | 50"H <sub>2</sub> O to 300 psi |
| <b>Sensor</b>   | Stainless steel                |
| <b>Warranty</b> | 1 year                         |



### 2WPS General Purpose Pressure Switch

The 2WPS has a NEMA 4, IP65 enclosure rating with the option of a NEMA 4X rating. It's typically utilized for pump and compressor monitoring and general industrial applications.

|                        |   |
|------------------------|---|
| <b>Housing</b>         | Anodized aluminum   |
| <b>Wetted Parts</b>    | Aluminum and Buna-N (PTFE O-ring or FKM diaphragm optional) |
| <b>Range</b>           | Vac to 500 psi  |
| <b>No. of Contacts</b> | One, SPDT   |
| <b>Accuracy</b>        | ±2% of the adjustable range                                 |
| <b>Warranty</b>        | 1 year  |



### 4WPS Low Pressure Diaphragm Pressure Switch

4WPS has simple single or dual set point adjustment. With ±0.5% accuracy it's ideal for more sensitive industrial applications.

|                        |  |
|------------------------|--|
| <b>Housing</b>         | Anodized aluminum  |
| <b>Wetted Parts</b>    | 304 SS process connection and 17-PH SS diaphragm               |
| <b>Range</b>           | "H <sub>2</sub> O to 150 psi                                   |
| <b>No. of Contacts</b> | One or two SPDT (hermetically sealed option for 1 x SPDT only) |
| <b>Accuracy</b>        | ±0.5% of the adjustable range                                  |
| <b>Warranty</b>        | 1 year   |



## D40 Diaphragm Seal

This compact lightweight diaphragm seal is ideally suited for applications where space limitations exist. This diaphragm seal is primarily utilized to protect gauges and transmitters from corrosive media.



|                      |                                 |
|----------------------|---------------------------------|
| <b>Housing</b>       | AISI 316 SS                     |
| <b>Diaphragm</b>     | AISI 316L SS, welded            |
| <b>Min. Pressure</b> | 15 psi                          |
| <b>Max. Pressure</b> | 1,000 psi                       |
| <b>Connection</b>    | 1/4" or 1/2" NPT female or male |
| <b>Warranty</b>      | 1 year                          |

## D70 Diaphragm Seal

The D70 is found in applications where process fluids are corrosive or viscous and could damage instrumentation. An optional flushing connection is available to prevent clogging of the seal.



|                      |   |
|----------------------|---|
| <b>Housing</b>       | 316L SS, Monel®, Hastelloy® C                       |
| <b>Diaphragm</b>     | 316L SS, Monel®, Hastelloy® C, FKM                  |
| <b>Min. Pressure</b> | 30 psi  |
| <b>Max. Pressure</b> | 2,500 psi   |
| <b>Connection</b>    | 1/4", 1/2", 3/4" or 1" NPT bottom, 1/4" or 1/2" top |
| <b>Warranty</b>      | 1 year  |

## D81 Isolation Ring

D81 is an inline diaphragm seal that is available in a variety of configurations to fit specific applications. The wafer style isolation ring makes the D81 ideal for measuring the pressure of viscous or solid media.



|                      |  |
|----------------------|--|
| <b>Housing</b>       | Carbon Steel, 316 SS, Acetal, others available                                       |
| <b>Diaphragm</b>     | Neoprene, Nitrile, EPDM, FKM or Natural Rubber                                       |
| <b>Min. Pressure</b> | Vacuum   |
| <b>Max. Pressure</b> | 1,000 psi  |
| <b>Connection</b>    | 1/4" or 1/2" NPTF gauge ports, 1"-42" pipe sizes, (consult factory for larger sizes) |
| <b>Warranty</b>      | 1 year   |

\*Tee fitting also available

## NVA Needle Valve

NVA Needle Valves come in straight, angle body, multiport or block & bleed, hard or soft seat, carbon or stainless steel with a NACE option. They provide excellent flow regulation and are leak tight.



|                      |   |
|----------------------|---|
| <b>Body</b>          | Carbon steel or stainless steel with or without NACE          |
| <b>Seat</b>          | Hard or soft seat   |
| <b>Max. Pressure</b> | 6,000 or 10,000 psi   |
| <b>Connection</b>    | 1/4", 3/8", 1/2", 3/4" or 1" NPTF and NPTM connection options |
| <b>Warranty</b>      | 1 year  |

## SOP Overpressure Protector

SOP utilizes an external adjusting screw to automatically shut off pressure to an instrument once the adjustable pressure is exceeded. This overpressure protector is available in Bellows and Piston types.



|                    |                                    |
|--------------------|------------------------------------|
| <b>Body</b>        | 316 SS                             |
| <b>Burst</b>       | 10,000 psi/kPa                     |
| <b>Temperature</b> | -40°F to 248°F (-40°C to 120°C)    |
| <b>Connection</b>  | 1/4" x 1/4" NPT or 1/2" x 1/2" NPT |
| <b>Warranty</b>    | 1 year                             |

## SSN Snubber

Winters' snubber uses a sintered, porous 316 SS snubbing element to ensure its effectiveness. Available in three classifications: heavy oil, water and air.



|                        |   |
|------------------------|---|
| <b>Body</b>            | 316 SS, brass* or lead free brass*  |
| <b>Operating Temp.</b> | SS: -320°F to 1,500°F (-195°C to 815°C), brass: -65°F to 650°F (-53°C to 815°C) |
| <b>Max Pressure</b>    | SS: 20,000 psi, brass: 10,000 psi   |
| <b>Burst Pressure</b>  | SS: 60,000 psi, brass: 30,000   |
| <b>Connection</b>      | 1/4" or 1/2" NPT  |
| <b>Warranty</b>        | 1 year  |

## TBM Bi-Metal Thermometer

This industrial grade thermometer uses a bi-metallic sensing element for reliable temperature readings. All models are hermetically sealed and fully moisture and water proof.



|                   |  |
|-------------------|--|
| <b>Dial Size</b>  | 1" to 6"   |
| <b>Case</b>       | AISI 304 SS  |
| <b>Accuracy</b>   | ±1% of full scale                                  |
| <b>Range</b>      | -100°F to 1,000°F (-70°C to 550°C)                 |
| <b>Connection</b> | 1/4" or 1/2" NPT bottom, back and adjustable angle |
| <b>Warranty</b>   | 5 year   |

## TRR Remote Reading Thermometer

TRR's are heavy duty gas or vapour filled thermometers for remote reading installations. This product is available for immediate delivery off-the-shelf and non-standard configurations are made-to-order.



|                   |   |
|-------------------|---|
| <b>Dial Size</b>  | 2.5", 3.5", 4", 4.5", 6" and 8.5"   |
| <b>Case</b>       | 2.5": 316 SS, 3.5" and 4": steel painted black, others are aluminum painted black |
| <b>Accuracy</b>   | Gas: ±0.5% of full scale value, Vapour: ±2% of full scale value                   |
| <b>Range</b>      | -40°F to 1,000°F (-40°C to 537°C)   |
| <b>Connection</b> | 1/2" bulb diameter, brass* or SS  |
| <b>Warranty</b>   | 5 year  |

## TBR Bi-Metal Threaded Thermowell

The TBR is standard in a "stepped construction" and available in a variety of custom configurations. Use to protect TBM thermometers from media or to allow for maintenance without shutting down a system.



|                         |  |
|-------------------------|--|
| <b>Material</b>         | Brass*, AISI 304 SS, AISI 316 SS, other materials available upon request |
| <b>Bore</b>             | .260" standard   |
| <b>Length</b>           | 2.5", 4", 6", 9", 12" or 15"   |
| <b>Process Connect.</b> | 3/4", 1/2" or 1" standard, other thread sizes available upon request     |
| <b>Therm. Connect.</b>  | 1/2" NPT female, other thread sizes available upon request               |
| <b>Warranty</b>         | 1 year   |

## TWF Bi-Metal Thermowell

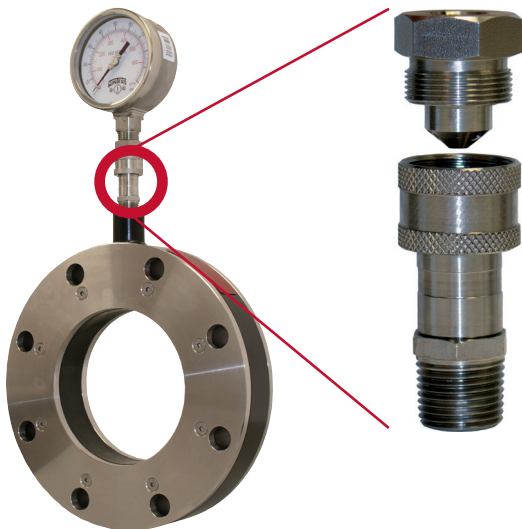
The TWF thermowell is designed for use on a closed system. It is used to protect thermometers from process media and to allow for thermometer replacement without requiring shut-down of the system.



|                         |                        |
|-------------------------|------------------------|
| <b>Material</b>         | 304 SS or 316 SS       |
| <b>Bore</b>             | .260"                  |
| <b>Length</b>           | 4", 6", 9", 12" or 15" |
| <b>Process Connect.</b> | 1", 1.5" or 2" flange  |
| <b>Therm. Connect.</b>  | 1/2" NPT female        |
| <b>Warranty</b>         | 1 year                 |

## Winters Isolation Ring


Winters' Isolation Ring provides a clog-free method of measuring the pressure of media containing solids. The flanged pipe connection provides accurate measurement while minimizing the amount of weight added to the system. A unique WinCONNECT fitting provides quick replacement of instrumentation, minimizing system down-time.



## Description and Features:

- ✓ Pressure measurement with no clogging
- ✓ WinCONNECT fitting allows pressure instruments to be shipped separately preventing damage in transit
- ✓ Quick field replacement without tools eliminates system down-time and leakage
- ✓ Tee fittings can be used so multiple instruments can be installed on the same ring
- ✓ Isolation ring works with 150# and 300# flanges

Hastelloy® is a registered trademark of Haynes International, Inc.  
Monel® is a registered trademark of Inco Alloys International

\*  **WARNING:** This product can expose you to chemicals including lead, which is known to the State of California to cause cancer and birth defects or other reproductive harm. For more information go to [www.P65Warnings.ca.gov](http://www.P65Warnings.ca.gov).

# WINTERS INSTRUMENTS

MANUFACTURER OF INDUSTRIAL INSTRUMENTATION



**Winters Instruments is a global manufacturer of premium quality pressure and temperature instrumentation, with distribution partners in over 90 countries. Please contact us for your nearest Regional Manager.**

#### **Corporate - Canada**

Winters Instruments  
121 Railside Road  
Toronto, Ontario  
M3A 1B2  
Tel: 416-444-2345  
1-800-WINTERS  
Fax: 416-444-8979  
sales@winters.com

#### **Canada - Calgary**

Winters Instruments  
3125-16 Street NE  
Calgary, Alberta  
T2E 7K8  
Tel: 403-723-6645  
1-800-WINTERS  
Fax: 403-723-6647  
calgary@winters.com

#### **USA - Houston**

Winters Instruments  
5400 W. Sam Houston Pkwy N.  
Houston, Texas  
77041  
Tel: 281-880-8607  
1-800-WINTERS  
Fax: 281-880-8614  
usasales@winters.com

#### **USA - Buffalo**

Winters Instruments  
Airport Commerce Park  
455 Cayuga Rd., Suite 650  
Buffalo, New York  
14225  
Tel: 716-874-8700  
1-800-WINTERS  
Fax: 716-874-8800  
usasales@winters.com

#### **Asia - Shanghai**

Winters Instruments  
Shanghai WitHub Hi-Tech  
Business Center Suite 308  
No. 333 Hongqiao Road  
Shanghai 200030 China  
Tel: 86-21-6104-2610  
Fax: 86-21-6104-2615  
asiasales@winters.com  
www.wintersasia.com

#### **Asia - Beijing**

Winters Instruments  
Rm. 1403, No. 36  
Longbao Building, Maizidian Street  
Chaoyang District  
Beijing 100125 China  
Tel: 86-10-8773-1315  
Fax: 86-10-8773-1315  
asiasales@winters.com  
www.wintersasia.com

#### **Latin America**

Winters Instruments  
Albarellos 1916 1° Piso E1  
B1640BIN, Martinez  
Buenos Aires, Argentina  
Tel: 54-11-4733-3003  
Fax: 54-11-4733-0572  
latinsales@winters.com  
www.winters.com.ar

#### **Europe - Middle East - Africa**

Winters Instruments  
Dubai Airport Free Zone  
6WB G50  
Dubai, United Arab Emirates  
Tel: 971-4295-9177  
Fax: 971-4295-9177  
menasales@winters.com



Distributed by: