



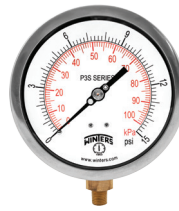
We're There.



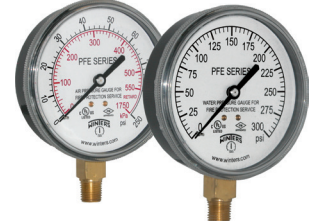
PRODUCT OVERVIEW

5-Year Warranty

On All Gauges, Thermometers and Tridicators



	DPG Digital	P1S 100 Series*	P3S 300 Series*	P9S 90 Series*
Dial Size	2.5" (63mm)	3.5" (90mm) 4" (100mm) 4.5" (115mm) 6" (150mm)	4.5" (115mm) 6" (150mm) 8.5" (215mm) 10" (250mm)	1.5" (40mm) 2" (50mm) 2.5" (63mm) 3.5" (90mm)
Tube and Socket	316 SS	Phosphor bronze/brass	316L SS/brass	Phosphor bronze/brass
Connection	¼" NPT	¼" NPT	¼" NPT for 600 psi or lower ½" NPT for 1,000 psi or higher	1.5" dial: ⅛" NPT 2" dial: ⅛", ¼" NPT 2.5", 3.5" dial: ¼" NPT
Range	Vac-0-15,000 psi	Vac-0-5,000 psi/kPa	Vac-0-20,000 psi/kPa	Vac-0-600 psi/kPa



	PEM/PEM-LF/PEU Economy*	PET/PET-LF Gas or Water Test*	PFD Differential*	PFE Sprinkler*
Dial Size	1.5" (40mm) 2" (50mm) 2.5" (63mm) 4" (100mm)	Gas Test: 2" (50mm) Water Test: 2.5" (63mm)	4" (100mm)	3.5" (90mm)
Tube and Socket	Phosphor bronze/brass or lead free phosphor bronze/brass	Phosphor bronze/brass or lead free phosphor bronze/brass	Die-cast aluminum, silicon rubber	Phosphor bronze/brass
Connection	1.5" dial: ⅛" NPT 2" dial: ⅛", ¼" NPT 2.5", 4" dial: ¼" NPT	Gas Test: ¾" NPTF Water Test: ¾" female swivel hose	1/8" NPTF high & low, side & back	¼" NPT
Range	Vac-0-5,000 psi/kPa	0-300 psi/kPa	0-150"H ₂ O, mmH ₂ O, psi, PA	0-300 psi/kPa or 0/80/retard-250 psi/kPa



StabiliZR™
power



StabiliZR™
power



	PN2/PN2-ZR NACE - MR0175-2002	PPC/PPC-ZR Process	PPD/PRD/PSD/PVD Differential	PRL Regulator
Dial Size	4" (100mm) 6" (150mm)	4.5" (115mm)	2.5" (63mm) 3.5" (90mm) 4.5" (115mm)	1.5" (40mm) 2" (50mm)
Tube and Socket	316 SS	316L SS/phosphor bronze/brass*	SS and others	316 SS
Connection	¼" or ½" NPT	¼" or ½" NPT	¼" or ½" NPT and others	1.5" dial: ⅛" NPT 2" dial: ⅛", ¼" NPT
Range	Vac-0-20,000 psi/kPa	Vac-0-20,000 psi/kPa	"H ₂ O-110 psid	Vac-0-5,000 psi/kPa

Pressure Gauges



PAG/PSQ 3A Sanitary

2.5" (63mm)
4" (100mm)

316L SS

316 SS, electro-polished with 0.75", 1.5" or 2" Tri-Clamp®

Vac-0-1,000 psi/bar



PAM Ammonia

2.5" (63mm), 3.5" (90mm), 4" (100mm), 6" (150mm), 8.5" (215mm), 10" (250mm)

316L SS

¼" NPT

Vac-0-300 psi/°F



PBC Forged Brass Case*

2.5" (63mm)
4" (100mm)

Brass

2.5" dial: ¼" NPT
4" dial: ¼", ½" NPT

Vac-0-10,000 psi/kPa



PCT/PCT-LF Contractor*

4.5" (115mm)

Phosphor bronze/brass or lead free phosphor bronze/brass

¼" NPT

Vac-0-5,000 psi/kPa



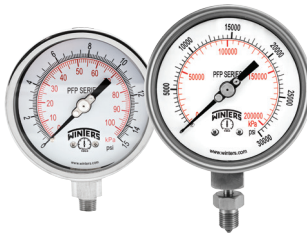
PDT/PDX Differential/Duplex

4.5" (115mm)
6" (150mm)

316L SS/phosphor bronze/brass*

¼" NPT

0-600 psi



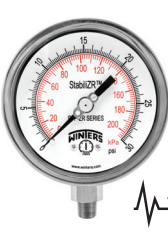
PFP Premium Filled

2.5" (63mm)
4" (100mm), 4.5" (115mm)
6" (150mm)
Bayonet ring

316L SS

2.5" dial: ¼" NPT
4" dial: ¼", ½" NPT, ½" BSP(G),
9/16" HP/HP autoclave
6" dial: ¼", ½" NPT

Vac-0-40,000 psi/kPa



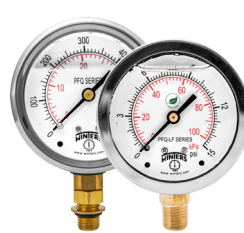
PFP-ZR Premium StabilizR™

2.5" (63mm)
4" (100mm)
6" (150mm)

316L SS

2.5" dial: ¼" NPT
4" dial: ¼", ½" NPT
6" dial: ¼", ½" NPT

Vac-0-20,000 psi/kPa



PFQ/PFQ-LF Filled

1.5" (40mm), 2" (50mm)
2.5" (63mm)
4" (100mm)
Crimped ring

316 SS/phosphor bronze* or
316 SS/lead free phosphor
bronze*

1.5" dial: ⅛" NPT
2" dial: ⅛", ¼" NPT
2.5" dial: ¼" NPT, 7/16"-20 SAE
4" dial: ¼", ½" NPT

Vac-0-15,000 psi/kPa - PFQ
Vac-0-15,000 psi/bar - SAE



PFQ-ZR StabilizR™*

2.5" (63mm)
4" (100mm)

Phosphor bronze/brass

¼" or ½" NPT

Vac-0-10,000 psi/kPa



PLP Low Pressure

2.5" (63mm)
4" (100mm)
4.5" (115mm)
6" (150mm)

316 SS/brass*

¼" NPT

Vac-0-10 psi/kPa



PSC Safety Case

2.5" (63mm)
4" (100mm)
4.5" (115mm)
6" (150mm)

316L SS

¼" or ½" NPT

Vac-0-20,000 psi/kPa
Tri-Clamp® is a registered trademark of Tri-Clover, Inc.



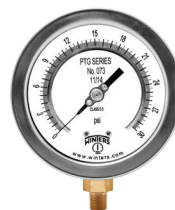
PSP Spiral Tube

1" (25mm), 1.125" (30mm)
1.25" (32mm), 1.5" (40mm)

304 SS/beryllium copper/brass*

⅛" NPT

0-5,000 psi



PTG Test

4" (100mm)
6" (150mm)
Mirror band for precise reading

316 SS/brass*

¼" or ½" NPT

Vac-0-10,000 psi/kPa



PTS Tube Stub

2.5" (63mm)

316L SS

¼" tube stub

Vac-0-5,000 psi/kPa



PWL Welding*

1.5" (40mm)
2" (50mm)
2.5" (63mm)

Phosphor bronze/brass

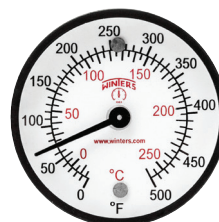
1.5" dial: ⅛" NPT
2", 2.5" dial: ¼" NPT

0-4,000 psi/kPa

Thermometers



	TAG HVAC Gold Case	TAS/TAS-LF Industrial 5"	TBM Bi-metal	TBT HVAC Bi-metal
Dial/Scale	4.5" (115mm) 6" (150mm)	5" (125mm)	1" (25mm), 2" (50mm) 3" (75mm), 4" (100mm) 5" (125mm), 6" (150mm)	3.5" (90mm)
Sensing Element	Brass*	Brass* or lead free brass*	SS	Brass*
Bulb/Stem Length	2" (50mm)	1.825" (46mm)	2.5" (63mm) - 48" (1,219mm)	2" (50mm)
Accuracy	±2% full scale	±2% full scale	±1% full scale	±2% full scale



	TCT Clamp-On	TIM/TIM-LF Industrial 9"*	TMT Surface Magnet	TRR Remote Reading
Dial/Scale	2.5" (63mm)	9" (230mm)	2" (50mm)	2.5" (63mm), 3.5" (90mm) 4" (100mm), 4.5" (115mm) 6" (150mm), 8.5" (215mm)
Sensing Element	Bi-metallic coil	Brass* or lead free brass	Bi-metallic coil	SS/brass*
Bulb/Stem Length	-	3.5" (90mm), 6" (150mm)	-	6" (150mm)
Accuracy	±3% full scale	±1% full scale	±2% full scale	Gas actuated: ±1% full scale Vapour actuated: ±2% full scale



	TSD/THS Solar Digital	TSW/TSW-LF Hot Water*	TTD Tridicator*	TER/TET RTD/Thermocouple
Dial/Scale	TSD: LCD size: 2.25" (57mm) x 2.25" (57mm) THS: 3" (75mm)	Dial: 2" (50mm) or 2.5" (63mm) Scale: 8" (200mm)	2.5" (63mm) 3" (75mm)	-
Sensing Element	TSD: Brass* THS: SS	Brass or lead free brass	Brass*	TER: Platinum 100 Ohm, 316 SS TET: Type J & K, 316 SS
Bulb/Stem Length	TSD: 3.5" (90mm), 6" (150mm) THS: 2.5" (63mm) - 24" (600mm)	Dial: 1.5" (40mm) Scale: 2.5" (63mm)	2.5" (63mm): 2.15" (55mm) stem 3" (75mm): 2.75" (70mm) stem	4" (100mm), 8" (200mm), 12" (300mm), 16" (400mm)
Accuracy	±1% of reading	±1% full scale	Pressure: ±3-2-3% Temperature: ±3% full scale	TER: ±0.15°C at 0°C TET: ±0.4%

Pressure Transmitters



LE1 OEM Transmitter

Features: Compact SS with ceramic sensor. Developed for OEM applications. CE approved, ±0.5% accuracy (±1% ≤ 45 psi)

Range: Vac to 8,700 psi

Applications: Pump and compressor monitoring, refrigeration and HVAC



LE3 General Purpose Transmitter

Features: Can be utilized in many applications. Rugged stainless steel, CE, CSA, NEMA 4X, ±0.5% accuracy

Range: Vac to 5,000 psi

Applications: Industrial machinery, hydraulics & pneumatics, compressor controls, boilers, chillers, AC & refrigeration



LIS Intrinsically Safe Transmitter

Features: Intrinsically safe design for hazardous areas. Rugged stainless steel, CE, CSA, NEMA 4X ±0.25% accuracy

Range: Vac to 8,700 psi

Applications: Appropriate for all hazardous areas where an intrinsically safe rating is required



LXP Explosion Proof Transmitter

Features: Designed with explosion proof enclosure. cULus approved, NEMA 4X, 7 and 9 and CRN pending. ±0.25% accuracy

Range: Vac to 10,000 psi

Applications: Hazardous locations in oil and gas installations including pump and compressor controls

Diaphragm Seals



Features:

Suitable for applications with corrosive media or where clogging is a concern. Available in various types of materials, housings and diaphragms. Flanges available in many sizes.

Ranges:

D10 PVC Diaphragm Seal Vac-200 psi

D15 Welded Diaphragm Seal 50-5,800 psi

D20 Sanitary Seal 30-600 psi

D30 High Pressure Seal 1,000-6,000 psi

D40 General Purpose 1-pc Seal 30-1,000 psi

D44 Flanged Diaphragm Seal 0-1,000 psi

Vac-200 psi

50-5,800 psi

30-600 psi

1,000-6,000 psi

30-1,000 psi

0-1,000 psi

D46 Flanged Flush Mount Seal 30-1,300 psi

D70 2-pc Industrial Seal 30-2,500 psi

D71 2-pc Industrial NACE Seal 30-2,500 psi

D81 Isolation Ring Vac-1,000 psi

D85 In Line Flow Thru Seal 30-600 psi

D90 Saddle Weld Seal 30-600 psi

30-1,300 psi

30-2,500 psi

30-2,500 psi

Vac-1,000 psi

30-600 psi

30-600 psi

Pressure Switches

Accessories



Features:

Available in a variety of pressure ranges and actuation methods.

Ranges:

2WPS General Purpose

Vac - 500 psi

3WPS Industrial

30 - 1,600 psi

4WPS Low Pressure Diaphragm

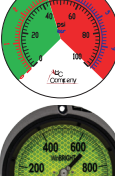
"H₂O to 150 psi

5WPS Differential

0 to 5,000 psi

9WPS Explosion Proof

Vac - 10,000 psi



Features and Ranges:

SNV/SNV-LF Brass or Lead Free Brass Needle Valve*: 400 psi

NVA Needle Valves: 316 SS or carbon steel, straight, angle body or multiport
Soft seat: 6,000 psi
Hard seat: 10,000 psi

BBV Block & Bleed Valves: 316 SS or carbon steel, single handle, two handle or double block & bleed
Soft seat: 6,000 psi
Hard seat: 10,000 psi

SOP Over Pressure Protector: SS NACE or non-NACE

Bellows type: 2.9-14.5 psi to 58-145 psi,
Piston type: 145-580 psi to 2,320-5,800 psi

SSN/SSN-LF Snubber: Brass*, lead free brass* or stainless steel

Brass: 10,000 psi
Stainless steel: 20,000 psi

SSP Syphon: Steel, brass* or SS, 3,200 psi

SMV/SMV-LF Brass or Lead Free Brass Mini Ball Valve*: 400 psi

STP/STP-LF Brass or Lead Free Brass Test Plug*: 1,000 psi

SCT Cooling Tower: 316 SS 1,500 psi

Thermowell: SS or brass*, bi-metal, sanitary, socket-weld, weld-in, flanged, stepped, tapered

Custom Dials: All custom and WinBRIGHT dials are manufactured to meet your specifications

* **WARNING:** This product can expose you to chemicals including lead, which is known to the State of California to cause cancer and birth defects or other reproductive harm. For more information go to www.P65Warnings.ca.gov.

More accessories are available. Please contact us for a full list of products. Products with an "LF" suffix are available with lead free wetted parts.

WINTERS INSTRUMENTS

MANUFACTURER OF INDUSTRIAL INSTRUMENTATION



Winters Instruments is a global manufacturer of premium quality pressure and temperature instrumentation, with distribution partners in over 90 countries. Please contact us for your nearest Regional Manager.

Corporate - Canada

Winters Instruments
121 Rainside Road
Toronto, Ontario
M3A 1B2
Tel: 416-444-2345
1-800-WINTERS
Fax: 416-444-8979
sales@winters.com

Canada - Calgary

Winters Instruments
3125-16 Street NE
Calgary, Alberta
T2E 7K8
Tel: 403-723-6645
1-800-WINTERS
Fax: 403-723-6647
calgary@winters.com

USA - Houston

Winters Instruments
5400 W. Sam Houston Pkwy N.
Houston, Texas
77041
Tel: 281-880-8607
1-800-WINTERS
Fax: 281-880-8614
usasales@winters.com

USA - Buffalo

Winters Instruments
Airport Commerce Park
455 Cayuga Rd., Suite 650
Buffalo, New York
14225
Tel: 716-874-8700
1-800-WINTERS
Fax: 716-874-8800
usasales@winters.com

Asia - Shanghai

Winters Instruments
Shanghai WitHub Hi-Tech
Business Center Suite 308
No. 333 Hongqiao Road
Shanghai 200030 China
Tel: 86-21-6104-2610
Fax: 86-21-6104-2615
asiasales@winters.com
www.wintersasia.com

Asia - Beijing

Winters Instruments
Rm. 1403, No. 36
Longbao Building, Maizidian Street
Chaoyang District
Beijing 100125 China
Tel: 86-10-8773-1315
Fax: 86-10-8773-1315
asiasales@winters.com
www.wintersasia.com

Latin America

Winters Instruments
Albarellos 1916 1° Piso E1
B1640BIN, Martinez
Buenos Aires, Argentina
Tel: 54-11-4733-3003
Fax: 54-11-4733-0572
latinsales@winters.com
www.winters.com.ar

Europe - Middle East - Africa

Winters Instruments
Dubai Airport Free Zone
6WB G50
Dubai, United Arab Emirates
Tel: 971-4295-9177
Fax: 971-4295-9177
menasales@winters.com



Distributed by: