

**"Apollo" Valves**

# WATER PRESSURE REDUCING VALVES



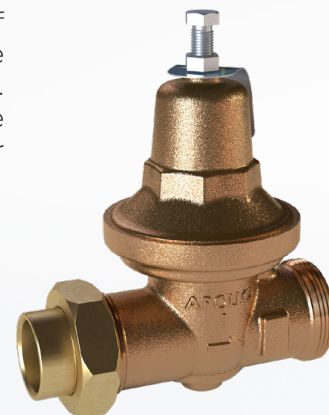
# "Apollo"® WATER PRESSURE REDUCING VALVES

Apollo® Water Pressure Reducing Valves are the perfect solution for:

- Reducing water consumption
- Reducing associated energy and utility costs
- Protection of piping systems/fixtures from excessive pressures that can reduce service life, cause water hammer, and other undesirable piping noises
- Used to ensure compliance to local plumbing codes
- Helps protect the environment by conserving water

**All Apollo Water Pressure Reducing Valves are Made in the USA (Pageland, SC) and are ARRA compliant.**

Apollo® 36LF Series pressure reducing valves provide automatic control of excessive water pressure and problem supply fluctuations. These models are designed to reduce pressures of up to 300 PSI to a more manageable range. The 36LF Series valves are built for long, reliable service with an all-bronze body and cover and high-capacity stainless steel strainer. Available with or without optional pressure gauge.



## FEATURES

- All Bronze Body and Cover
- Suitable for Supply Pressures to 300 psi (200 psi for Press Connections)
- Solder, Threaded, PEX A/B/C, CPVC, & Press Connection Options
- Single and Double Union Options
- In-Line Repairable

Versatile, all-purpose Apollo® 36CLF Series pressure reducing valves handle pressures up to 400 PSI. Compact and with a built-in thermal expansion bypass, they're designed to protect residential and commercial water distribution systems from excessive pressures. Built for reliable, long-term service, the 36C Series valves offer an all-bronze body, stainless steel strainer and seat. Designed for easy in-line servicing, 36C models come standard with a clean-out plug on the housing's bottom. Available with or without gauge tapping and gauge.



## FEATURES

- Dependable Cast Bronze Body
- Suitable for Supply Pressures to 400 psi (200 psi for Press Connections)
- Solder, Threaded, PEX A/B/C, CPVC, & Press Connection Options
- Single and Double Union Options
- In-Line Repairable

The Apollo® 36ELF is designed for residential and commercial applications to protect water supplies from excessive pressure. Excellent flow performance at low pressure drop. The dezincification resistant bronze body and dielectric polymer cage provide maximum corrosion resistance. Designed for easy in-line servicing with simple cartridge removal.

## SMALL DIAMETER (1/2" - 1")

- Dependable Cast Bronze Body
- Suitable for Supply Pressures to 400 psi (200 psi - Push & Press)
- Solder, Threaded, PEX A/B/C, CPVC, & Press Connection Options
- Single, Double, and Less Union Options

## LARGE DIAMETER (1-1/4" - 2")

- NPT, Solder and Press Connections Only - Max 300 psi
- High Flow / High Efficiency Design



All Apollo® Water Pressure Reducing Valves meet the following criteria:

- Every valve is 100% factory set and tested
- Diaphragm suitable for 33° - 180°F
- Built-in thermal expansion bypass
- Integral stainless steel strainer
- USA materials and manufacture

**APPROVALS**

- ASSE 1003
- CSA B356
- IAPMO/UPC
- NSF/ANSI 372 Lead Free
- NSF/ANSI 61 Water Quality

36ELF-G  
SERIES

The Apollo® 36ELF-G Series Pressure Reducing Valve with built in pressure gauge is designed to conserve water and protect water distribution systems by automatically reducing elevated supply pressures. These PRV's are Ideal for industrial and irrigation applications. The built in gauge easily allows the installer and the user to see the downstream pressure. The dezincification resistant bronze body and dielectric polymer cage provide maximum corrosion resistance. Designed for easy in-line servicing with simple cartridge removal.

**FEATURES**

- Dependable Cast Bronze Body
- Suitable for Supply Pressures to 400 psi (200 psi for Push & Press Connections)
- Solder, Threaded, PEX A/B/C, CPVC, & Press Connection Options
- Single, Double, and Less Union Options
- Built in Pressure Gauge



36HLF  
SERIES

Apollo® 36HLF Series pressure reducing valves offer high performance in heavy-duty applications. They're designed with a larger diaphragm and orifice area to yield the highest water flow water capacities in the industry. The 36HLF pressure reducing valves' integral bypass protects against thermal expansion. Built for extended service, these models include bronze body construction and stainless steel replaceable seat. These heavy-duty valves are available with optional in-line strainer and 150lb. ANSI B16.24 integral bronze flange connections. (2-1/2" and 3" only)

**FEATURES**

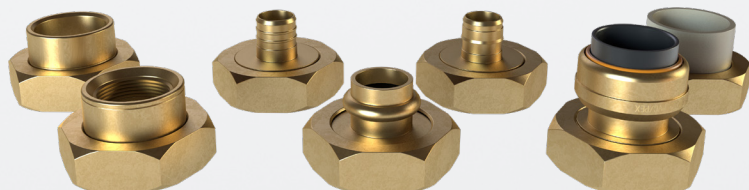
- Bronze Body and Spring Cage for Superior Corrosion Resistance and Dependability
- SS Fasteners, Spring, Seat, and Adjustment Screw
- Sealed Spring Cage for Vault Installations
- Suitable for Supply Pressures to 400 psi



TAIL PIECE  
KITS

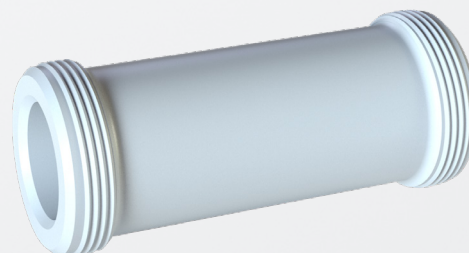
36E bodies are threaded to accept unions. TPK Tailpiece Kits allow for customization of the end connection configurations in the field. Union connections can easily be added and tailpieces can be mixed to match the requirements at the jobsite. NPT x Solder? PEX x Press? - no problem!

Connections include solder, FNPT, CPVC, both PEX F1807 and F1960, Press, and Push. Each TPK includes one tailpiece, a union nut and a washer.



36E SERIES  
SPACER

36E spacers designed to allow systems to be flushed prior to installing the PRV.



# 36 ELF

S E R I E S



MODEL 1531  
ANSI/ISE 61-8  
RANGE 15-75 PSI  
SIZE 1  
MAX INLET 400 PSI  
180°F MAX  
1531

NORYL™ OR BRONZE CAP

BALANCED PISTON DESIGN

BUILT-IN THERMAL EXPANSION BYPASS

MODULAR SEAT DISC AND STRAINER CARTRIDGE

INTEGRAL STAINLESS STEEL STRAINER

NUMEROUS CONNECTION TYPE TAILPIECE OPTIONS

CAST LEAD FREE BRONZE BODY

customer service (704) 841-6000  
www.apollovalves.com

