

BOSHART INDUSTRIES

Telephone: 1-519-595-4444 - Toll Free: 1-800-561-3164

Fax: 1-519-595-4380 - www.boshart.com

SECTION 13 SUMP & SEWAGE ACCESSORIES

PRODUCT LINE	PAGE
Liquid Level Alarms	1
PVC Swing Check and Backwater Valves	2
Combination Ball/Swing Check Valves	3
Technical Data re Compression Fittings	3
Sump Pump Check Valves	4
Sump Pump Discharge Kit	4
Float Switches	5
Sensor Switches	6
PVC Ball Check	7
Water Box	7
Cable Weights and Accessories	8
Tapped Pitless Adapters	8

BOSHART INDUSTRIES

Telephone: 1-519-595-4444 - Toll Free: 1-800-561-3164

Fax: 1-519-595-4380 - www.boshart.com

13-1

August 1/18

BII LIQUID LEVEL ALARMS (INDOOR)

The 850H & 850L series liquid level alarms are a multi purpose alarm that can be used in a wide variety of applications such as: cisterns, residential sewage basins, septic tanks, sump basins, holding tanks, pump chambers, water tanks, and any others where detection of high or liquid level conditions is required.

Features:

- Low voltage switch circuit, the float switch operates on low voltage (9 VDC) and is isolated from main power line to reduce the possibility of shock
- 9 VDC battery (not included) back-up for temporary protection during power outages
- Green "power on" light and Red "alarm/silenced" light, the red silenced light will remain on when the switch is in the silence "S" position, this provides visual notification that the signalling device is still active even though the audible alarm has been silenced.
- 103 dB buzzer alarm (@ 2 feet) with Push-to-Test switch
- Alarm comes complete with auxiliary contacts to allow connection to an auto dialer, BAS (building automation system) or SCADA (supervisory control and data acquisition) system for remote detection and notification of alarm conditions.



Construction / Ratings:

- NEMA Type 1 Enclosure for indoor use only, has external mounting flange for quick and easy installation
- Primary Power (to alarm) 120 VAC, 60 Hz
- Secondary Power (to control switch/signalling device) Class 2, 9 VDC, 200 mA
- 5' power cord comes with cable clip for secure installation and prevents accidental disconnect from power source
- High impact PVC float housing provides excellent corrosion resistance
- SJOW flexible CPE rubber (chlorinated polyethylene) 18 gauge 2 conductor cable
- Single pole, single throw float switch is mechanically activated with snap action contacts, not sensitive to rotation or turbulence
- Operating Temperature: 0 to 140°F (-17 to 60°C)
- cULus Listed to ANSI/UL 2017 & CSA-C22.2 No. 205 Standards

PART NO.	DESCRIPTION	QUANTITY		LIST PRICE-A
		CTN	CASE	
HIGH LEVEL - Contacts are normally open and will activate alarm with high liquid level				
850H-10	High level alarm with 10' switch cord	1	24	169.42
850H-20	High level alarm with 20' switch cord	1	20	176.17
850H-30	High level alarm with 30' switch cord	1	12	192.01
850H-50	High level alarm with 50' switch cord	1	12	214.46
LOW LEVEL - Contacts are normally closed and will activate alarm with low liquid level				
850L-10	Low level alarm with 10' switch cord	1	24	169.42
850L-20	Low level alarm with 20' switch cord	1	20	176.17
850L-30	Low level alarm with 30' switch cord	1	12	192.01
850L-50	Low level alarm with 50' switch cord	1	12	214.46



NOTE: Dual Rated Alarms for either Indoor or Outdoor use are available. Dual Rated for Type 1 Indoor Use & Type 4X Outdoor Use - Waterproof against pressurized wash-downs. Please contact your Sales Rep for more information.

ACCESSORIES FOR LIQUID LEVEL ALARMS

The 850-WSF water sensor is a reliable leak detection sensor that can be used in a wide variety of applications such as: basements, sumps, air conditioner condensate run over, water heaters, computer and utility rooms. The sensor comes standard with a 15' (4.572 M) cable that quickly connects to any 850 series alarm. Connect up to 6 sensors for complete zone protection.

PART NO.	DESCRIPTION	QUANTITY	LIST
		CASE	PRICE-A
850-WSF	Flat water sensor for floor detection	40	62.45



The 850-WSP water sensor is a reliable leak detection probe sensor that can be used in a wide variety of applications such as: sump basins, water tanks and drain pans. The sensor comes standard with a 15' (4.572 M) cable that quickly connects to any 850 series alarm. Connect up to 6 sensors for complete zone protection.

PART NO.	DESCRIPTION	QUANTITY	LIST
		CASE	PRICE-A
850-WSP	Probe water sensor for tank/basin overflow detection	40	73.20



The 850-AD auto dialer connects to the auxiliary contacts on any 850 series alarm and can provide early warning calls to any combination of 4 programmed phone numbers in the event of an active alarm due to pump failures or flooding.

PART NO.	DESCRIPTION	QUANTITY	LIST
		CASE	PRICE-A
850-AD	Auto dialer	40	674.73





SEAL WELL PRODUCTS **SWING CHECK VALVES**

- Excellent choice for Sump, Sewage and Grinder pump applications.
- Full port design for less friction and easier pumping.
- Angled seat provides quiet operation by minimizing water hammer.
- Designed for vertical ◊ or horizontal ∞ installation.
- Manufactured from PVC type 1 grade 1 material, meeting ASTM-D1784.
- Compatible with schedule 40 & 80 pipe.
- Max Pressure: 150 PSI at 72°F.
- Body: White

STANDARD PART NO.	LIST PRICE-A	QUIET PART NO.	LIST PRICE-A	INLET	IPS SIZE CONNECTION	OUTLET	BODY LENGTH	QTY CASE
17SPCV-1215	25.23				1-1/4" or 1-1/2" Compression	1-1/4" or 1-1/2" Compression	5.59"	12
17SCC-12*	57.35				1-1/4" Compression	1-1/4" Compression	7.50"	12
17SCC-15	41.86	17QSCC-15	52.85		1-1/2" Compression	1-1/2" Compression	8.38"	12
17SCC-20	58.72	17QSCC-20	72.64		2" Compression	2" Compression	9.00"	12
17SCC-30*	230.40				3" Compression	3" Compression	14.00"	2
17SCTU-15	32.72	17QSCTU-15	40.43		1-1/2" Slip Union	1-1/2" Slip Union	10.04"	12
17SCTU-20	47.57	17QSCTU-20	58.94		2" Slip Union	2" Slip Union	10.94"	12



17SPCV-1215



17SCC-15



17SCTU-15

* Products are not Seal Well Products
 ◊ Best practice is to install valves in the VERTICAL position when pumping SOLID FREE liquids.
 ∞ IMPORTANT: When pumping SOLIDS/SEMI SOLIDS valve must be installed HORIZONTALLY (up to 45° angle acceptable). Extra care must be taken to ensure the flow arrow points away from the pump AND the check valve body is oriented as per the marking on the valve body HORIZONTAL USE THIS SIDE UP. Failure to position the swing check valve with the hinge of the flapper in the top center position will result in the valve not functioning properly.

PVC SOLVENT WELD SWING CHECK

- Same as PVC Compression Swing Check, but with solvent weld ends

STANDARD PART NO.	LIST PRICE-A	QUIET PART NO.	LIST PRICE-A	INLET	IPS SIZE CONNECTION	OUTLET	BODY LENGTH	QTY CASE
17SCS-05	36.92				1/2" Slip	1/2" Slip	4-1/2"	20
17SCS-07	37.58				3/4" Slip	3/4" Slip	4-1/2"	25
17SCS-10	38.91				1" Slip	1" Slip	5-1/8"	25
17SCS-12	41.46				1-1/4" Slip	1-1/4" Slip	5-1/4"	12
17SCS-15 †	26.82	17QSCS-15 †	37.21		1-1/2" Slip	1-1/2" Slip	5-3/4"	9
17SCS-20 †	38.93	17QSCS-20 †	51.86		2" Slip	2" Slip	6"	6
17SCS-30	116.38				3" Slip	3" Slip	9"	4
17SCS-40	164.91				4" Slip	4" Slip	9-1/2"	1

† products are Seal Well Products



Max Pressure 125 PSI @ 72°F

PVC BACKWATER VALVE

- Gasketed flapper ensures a water tight seal
- Flapper design allows for unrestricted flow of effluent
- Made of corrosion-free materials to assure inside remains smooth without flaking or pitting
- Used in nominally horizontal drain lines and branches
- All hubs are Sch. 40



PART NO.	IPS SIZE INLET	CONNECTION OUTLET	QTY CASE	LIST PRICE-A
171530-20	2" Slip	2" Slip	8	126.80
171530-30	3" Slip	3" Slip	4	124.41
171530-40	4" Slip	4" Slip	2	137.82





BOSHART INDUSTRIES

Telephone: 1-519-595-4444 - Toll Free: 1-800-561-3164

Fax: 1-519-595-4380 - www.boshart.com

13-3

August 1/18



COMBINATION BALL/ SWING CHECK VALVES

Seal Well 17CSBV Series combination check valve/ball type shut off valve allows for wastewater pumping applications combining both an in-line shut off and back flow prevention. The combination check/ball valve results in a more compact installation than two separate valves. Ideal for any installation, especially where space is limited. The check valves feature an angled seat design, minimizing flow reversal and potentially damaging hydraulic shock (water hammer). Excellent choice for Sump, Sewage and Grinder pump applications.

- Full port design for less friction and easier pumping.
- Angled seat provides quiet operation by minimizing water hammer.
- Designed for vertical ◊ or horizontal ∞ installation.
- Manufactured from PVC type 1 grade 1 material, meeting ASTM-D1784.
- Compatible with schedule 40 & 80 pipe.
- Max Pressure: 150 PSI at 72°F.
- Body: White

STANDARD PART NO.	LIST PRICE-A	QUIET PART NO.	LIST PRICE-A	IPS SIZE CONNECTION		BODY LENGTH	QTY CASE
				INLET	OUTLET		
17SCBV-15SU	45.53	17QSCBV-15SU	50.13	1-1/2" Slip Union	1-1/2" Slip	10.30"	6
17SCBV-15TU	60.33	17QSCBV-15TU	65.59	1-1/2" Slip Union	1-1/2" Slip Union	11.65"	6
17SCBV-15UC	55.08	17QSCBV-15UC	60.45	1-1/2" Compression	1-1/2" Compression	10.93"	6
17SCBV-20SU	68.90	17QSCBV-20SU	78.08	2" Slip Union	2" Slip	11.90"	6
17SCBV-20TU	80.01	17QSCBV-20TU	88.78	2" Slip Union	2" Slip Union	12.59"	6
17SCBV-20UC	73.65	17QSCBV-20UC	82.33	2" Compression	2" Compression	13.90"	6



17SCBV-15SU



17SCBV-15TU



17SCBV-15UC

- ◊ Best practice is to install valves in the VERTICAL position when pumping SOLID FREE liquids.
- ∞ IMPORTANT: When pumping SOLIDS/SEMI SOLIDS valve must be installed HORIZONTALLY (up to 45° angle acceptable). Extra care must be taken to ensure the flow arrow points away from the pump AND the check valve body is oriented as per the marking on the valve body HORIZONTAL USE THIS SIDE UP. Failure to position the swing check valve with the hinge of the flapper in the top center position will result in the valve not functioning properly.

TECHNICAL DATA RE COMPRESSION FITTINGS

BUNA-N SEALS The gasket seal is made of high quality Buna-N Elastomeric compound which meets the requirements of ASTM D-2000. It is generally resistant to many hydrocarbons, fats, oils, greases, hydraulic fluids and chemicals. It is generally attacked by Ozone, Keytones, Esters, Aldchydies, chlorinated and nitro hydrocarbons. Reference chemical resistance under NBR (Nitrile) Elastomers for specific listings.

DOUBLE SEAL of standard compression fitting. A compressive action is created as the cap is tightened squeezing the Buna-N seals into the tapered recessed areas of the cap and body. This process creates a highly concentrated pressure at the two "double seal" points, thus providing positive protection against leakage (See illustration).

ACME THREAD General purpose 10 pitch Acme thread on Compression cap section, eliminates the possibility of cross threading. This smooth running design prevents binding or galling as is often experienced in standard tapered threads.

COMPRESSION CONNECTIONS Compression cap should be drawn up hand tight to insure proper alignment and seating of gasket, then tighten 3/4 to 1 turn with a Spanner Wrench or strap wrench. Average torque should be approximately 25 foot pounds on 1/2" through 2" IPS, and 35 foot pounds on 2 1/2" and larger IPS. Compression fittings are not recommended for use on compressed air lines or natural gas lines.

THREAD CONNECTIONS Use teflon tape on all IPS thread connections. IPS thread connection should be made hand tight plus 1/2 to 3/4 turn with a wrench.

THRUST BLOCKING When installing the Standard Compression Seal fittings the pipe line must be restrained from lateral movement by thorough soil compaction on straight runs and thrust blocking at change of direction or reduction in size. Not recommended for use on pipe lines suspended on hangers.



BOSHART INDUSTRIES

13-4
August 1/18

Telephone: 1-519-595-4444 - Toll Free: 1-800-561-3164
Fax: 1-519-595-4380 - www.boshart.com



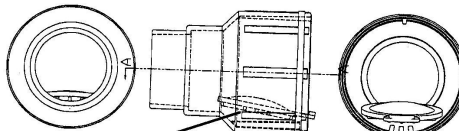
SUMP PUMP CHECK VALVES

FEATURES

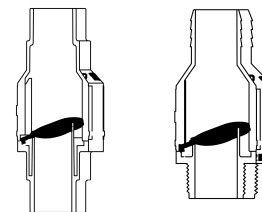
- Full Port Valve design
- Flapper opens 100%, a feature that sets this valve apart from any of the competition
- Flapper is seated on a 15° angle to reduce water hammer when pump is shut off
- The design of the flapper prevents debris from building up or getting caught which ensures proper seating
- Made of durable ABS

Ratings:

- Maximum Temperature 140°F (60°C)
- Rubber Boot Installation: 10 feet of head/4.3 psi
- Solvent Weld Installation: 58 feet of head/25 psi



Zero Obstruction-Valve Seal opens 100%



BSC-125-150SXS BSC-150-150B

Models designed to be threaded directly into pump discharge

PART NO.	INLET	OUTLET	QTY CTN	LIST PRICE-A
BSC-125-B	1-1/4" MPT	1-1/4" BARB or 1-1/2" SPIGOT	20	3.89
BSC-150-B	1-1/2" MPT	1-1/4" BARB or 1-1/2" SPIGOT	20	3.92
BSC-150-150B	1-1/2" MPT	1-1/2" BARB	20	4.04
BSC-125	1-1/4" MPT	1-1/4" or 1-1/2" SPIGOT	20	4.02
BSC-125-150S	1-1/4" MPT	1-1/2" SPIGOT	20	3.99
BSC-150	1-1/2" MPT	1-1/4" or 1-1/2" SPIGOT	20	4.15
BSC-150-150S	1-1/2" MPT	1-1/2" SPIGOT	20	4.02
• One reducing flexible rubber coupling (FRC) and two all stainless steel clamps provided				
BSC-125-SRS	1-1/4" MPT	1-1/4" or 1-1/2" FRC	10	7.37
BSC-150-SRS	1-1/2" MPT	1-1/4" or 1-1/2" FRC	10	7.41



Models designed for quick and easy inline installation

- Completely assembled with straight or reducing flexible rubber coupling (FRC) on both inlet and outlet
- Four all stainless steel clamps provided

BSC-125-SB	1-1/4" FRC	1-1/4" FRC	10	9.52
BSC-150-SB	1-1/2" FRC	1-1/2" FRC	10	9.85
BSC-125/150-DRS	1-1/4" or 1-1/2" FRC	1-1/4" or 1-1/2" FRC	10	10.41
• Slip X Slip Body Only				
BSC-125/150-SXS	1-1/4" or 1-1/2" SPIGOT	1-1/4" or 1-1/2" SPIGOT	10	4.23
BSC-150-SXS	1-1/2" SPIGOT	1-1/2" SPIGOT	20	4.16

BSC-150-SRS



Sump / Sewage Check Valves

- Blow out proof nylon reinforce gasket design
- Flapper is seated on a 15° angle to reduce water hammer when pump is shut off

BSC-200-SB	2" FRC	2" FRC	12	19.67
------------	--------	--------	----	-------



BSC-200-SB

SUMP PUMP DISCHARGE KIT

- Kit includes 24 ft. of corrugated polyethylene sump pump tubing, one plastic adapter and one clamp 301 stainless band and housing - carbon steel screw
- Cutting pads at 6 ft. intervals for special applications

PART NO.	TUBING SIZE	FITTING SIZE	QUANTITY CTN	QUANTITY CASE	LIST PRICE-A
SPDK125-24	1-1/4" X 24'	1-1/4" MPT X 1-1/4" Barb	1	8	13.60
SPDK125-24-CV	1-1/4" X 24'	1-1/4" MPT X 1-1/4" Barb Includes Check Valve BSC-125-B	8		19.71
SPDK125150-24	1-1/4" X 24'	1-1/4" x 1-1/2" MPT	1	8	13.64
SPDK150-24	1-1/2" X 24'	1-1/2" MPT X 1-1/2" Barb	1	6	20.97



BOSHART INDUSTRIES

Telephone: 1-519-595-4444 - Toll Free: 1-800-561-3164

Fax: 1-519-595-4380 - www.boshart.com

13-5

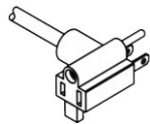
August 1/18

FLOAT SWITCHES

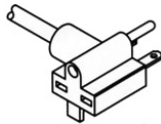
Mechanical float switches have many important features. The internal structure contains precision molded parts with only two moving pieces. A steel ball moves through a solidly constructed housing to activate a switch arm that triggers a top quality miniature snap action switch.

The floats are supplied with Chlorinated Polyethylene (CPE) jacketed (SJOW-A/CSA Type SJOW) cords, with 120 or 240 volt series(piggy back) plugs which eliminates the need for internal wiring in the pump motor. The units can also be supplied without plugs or in various lead lengths.

Normally open switches are used for pumping liquid levels down. Normally closed switches are for pumping liquid levels up.



120 VAC
SERIES
PLUG



240 VAC
SERIES
PLUG

1/2 HP FLOAT SWITCHES - PUMP UP AND PUMP DOWN - IMPORT

- 862D series contacts are normally open, used for emptying / high level alarm applications
- 862U series contacts are normally closed, used for filling / low level alarm applications
- High impact, corrosion resistant, Black Polypropylene float housing
- SJOW flexible CPE rubber (Chlorinated Polyethylene) 16 gauge, 2 conductor cable
- Mechanically activated, wide angle pump switch, not sensitive to rotation or turbulence
- Max Operating Temperature: 140°F (60°C) • Ratings: 13 amps - 1/2 HP @ 120 VAC 50/60 Hz
- UL Listed to ANSI/UL 508 & CSA Listed to CSA-C22.2 No. 14 Standards

PUMP DOWN PART NO.	LIST PRICE-A	PUMP UP PART NO.	LIST PRICE-A	QUANTITY CTN	VOLTAGE	CORD LENGTH
862D-120-10	48.19	862U-120-10	48.19	10	120 VAC	10 Ft
862D-120-15	55.47	862U-120-15	55.47	10	120 VAC	15 Ft
862D-120-20	64.01	862U-120-20	64.01	10	120 VAC	20 Ft



1/2 HP FLOAT SWITCHES - PUMP UP AND PUMP DOWN DOMESTIC

- 860D series contacts are normally open, used for emptying / high level alarm applications
- 860U series contacts are normally closed, used for filling / low level alarm applications
- High impact Grey PVC float housing provides excellent corrosion resistance
- SJOW flexible CPE rubber (chlorinated polyethylene) 14 gauge 2 conductor cable
- 90 degree switching differential is mechanically activated with snap action contacts, not sensitive to rotation or turbulence
- Operating Temperature: 0 to 140°F (-17 to 60°C) • Ratings: 13 amps - 1/2 HP @ 120 VAC / 1 HP @ 240 VAC
- cULus Listed to ANSI/UL 508 & CSA-C22.2 No. 14 Standards

PUMP DOWN PART NO.	LIST PRICE-A	PUMP UP PART NO.	LIST PRICE-A	QUANTITY CTN	VOLTAGE	CORD LENGTH
860D-120-10	56.98	860U-120-10	56.98	1	120 VAC	10 Ft
860D-120-15	62.87	860U-120-15	60.24	1	120 VAC	15 Ft
860D-120-20	69.23	860U-120-20	69.23	1	120 VAC	20 Ft
860D-120-30	83.06	860U-120-30	83.06	1	120 VAC	30 Ft
860D-120-50	114.83	860U-120-50	114.83	1	120 VAC	50 Ft
860D-240-10	61.80	860U-240-10	59.21	1	240 VAC	10 Ft
860D-240-15	64.82	860U-240-15	64.82	1	240 VAC	15 Ft
860D-240-20	74.50	860U-240-20	74.50	1	240 VAC	20 Ft



1 & 2 HP FLOAT SWITCHES - PUMP UP AND PUMP DOWN DOMESTIC

- 870D series contacts are normally open, used for emptying / high level alarm applications
- 870U series contacts are normally closed, used for filling / low level alarm applications
- High impact Grey PVC float housing provides excellent corrosion resistance
- SJOW flexible CPE rubber (chlorinated polyethylene) 14 gauge 2 conductor cable
- 90 degree switching differential is mechanically activated with snap action contacts, not sensitive to rotation or turbulence
- Operating Temperature: 0 to 140°F (-17 to 60°C) • Ratings: 15 amps - 1 HP @ 120 VAC / 2 HP @ 240 VAC
- cULus Listed to ANSI/UL 508 & CSA-C22.2 No. 14 Standards

PUMP DOWN PART NO.	LIST PRICE-A	PUMP UP PART NO.	LIST PRICE-A	QUANTITY CTN	VOLTAGE	CORD LENGTH
870D-120-10	112.32	870U-120-10	112.32	1	120 VAC	10 Ft
870D-120-20	124.21	870U-120-20	124.21	1	120 VAC	20 Ft
870D-120-30	136.56	870U-120-30	132.63	1	120 VAC	30 Ft
870D-240-10	116.06	870U-240-10	116.06	1	240 VAC	10 Ft
870D-240-20	134.56	870U-240-20	134.56	1	240 VAC	20 Ft
870D-240-30	143.71	870U-240-30	147.83	1	240 VAC	30 Ft

NOTE: Available in longer cord lengths. Please call your Sales Rep for more information.

BOSHART INDUSTRIES

13-6
August 1/18

Telephone: 1-519-595-4444 - Toll Free: 1-800-561-3164
Fax: 1-519-595-4380 - www.boshart.com

CONTROL SENSOR SWITCHES

Mechanical sensor switches have many important features. The sensor control switches are used for level sensing for alarms and pump control panels. The sensor switch does not have a plug, but the cord is skived to connect to terminals in a panel. The switch is rated at 1/4 H.P. 120/240 volts.

The floats are supplied with Chlorinated Polyethylene (CPE) jacketed (18-2 SJOW-A) cords and the cords are available in various lead lengths.

Normally open switches are used for pumping liquid levels down and have a two wire connection. Normally closed switches are for pumping liquid levels up with a two wire connection. Double throw switches can be connected for either normally open or normally closed and have 3 wire connection.

- High impact Black PVC float housing provides excellent corrosion resistance
- SJOW flexible CPE rubber (chlorinated polyethylene) 18 gauge 2 conductor cable
- 10 degree switching differential is mechanically activated with snap action contacts, not sensitive to rotation or turbulence
- Operating Temperature: 0 to 140°F (-17 to 60°C)
- Ratings: 4 amps - 120 / 240 VAC
- cULus Listed to ANSI/UL 508 & CSA-C22.2 No. 14 Standards

Single Throw Pump Down - Contacts Normally Open

880NO series contacts are normally open, used for emptying / high level alarm applications

PART NO.	LIST PRICE-A	QUANTITY CTN	VOLTAGE	CORD LENGTH
880NO-10	45.84	1	120 VAC	10 Ft
880NO-15	49.80	1	120 VAC	15 Ft
880NO-20	53.80	1	120 VAC	20 Ft
880NO-30	68.85	1	120 VAC	30 Ft

Single Throw Pump Up - Contacts Normally Closed

880NC series contacts are normally closed, used for filling / low level alarm applications

PART NO.	LIST PRICE-A	QUANTITY CTN	VOLTAGE	CORD LENGTH
880NC-10	45.84	1	120 VAC	10 Ft

Double Throw - Contacts Normally Open or Closed

880NOC series contacts are normally open or closed, used for emptying or filling applications

PART NO.	LIST PRICE-A	QUANTITY CTN	VOLTAGE	CORD LENGTH
880NOC-10	59.67	1	120 VAC	10 Ft
880NOC-20	67.31	1	120 VAC	20 Ft
880NOC-30	78.26	1	120 VAC	30 Ft



NOTE: Available in longer cord lengths. Please call your Sales Rep for more information.



BOSHART INDUSTRIES

Telephone: 1-519-595-4444 - Toll Free: 1-800-561-3164

Fax: 1-519-595-4380 - www.boshart.com

13-7

August 1/18

MODELS 208T/208S - PVC BALL CHECK

- Corrosion resistant PVC body
- Threaded female x female connection
- NITRILE (Buna-N) self-cleaning ball
- E-Z access port with nitrile seal.

SIZE	PART NO.	WGT	LIST PRICE-A
1"	172131T	1.0	124.15
1-1/4"	172132T	1.0	107.87
1-1/2"	172133T	2.0	169.36
2"	172134T	2.0	169.36

Also available with socket weld (slip)
(Model 208S)



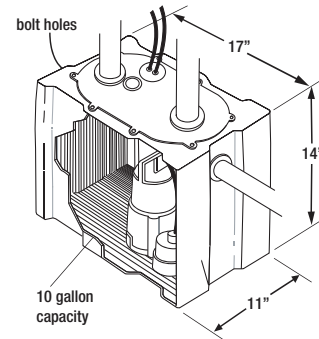
Temp Max 180°F (80°C)
Pressure Max 100 PSI

NOTE: Cast Iron Ball and Swing Checks are available for Sump & Sewage applications

THE WATER BOX

- ACCEPTS MOST ANY SUBMERSIBLE PUMP
- Instantly and economically solves waste water handling problems for laundry tubs, washing machines, wet bars, dehumidifiers or any other waste water storage and pumping applications
- Construction: Rotationally molded from totally corrosion resistant polypropylene with no seams for maximum durability
- Installation: The bolt down cover allows easy access for installation or removal of 1-1/4" or 1-1/2" sump pump
- 1-1/2" inlet connection is threaded
- 2" Vent Pipe can be installed if necessary

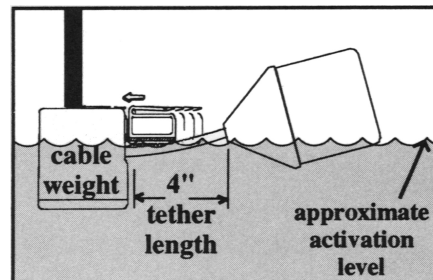
PART NO.	DIMENSIONS	CAPACITY	LIST PRICE-A
SPWB-10	17" X 11" X 14"	10 Gallons	179.00



CABLE WEIGHT

- Provides a secure, adjustable, external pivot point for float switches
- Features: Impact-resistant, non-corrosive PVC housing

PART NO.	LIST PRICE-A
890-AW	31.75



BOSHART INDUSTRIES

13-8
August 1/18

Telephone: 1-519-595-4444 - Toll Free: 1-800-561-3164
Fax: 1-519-595-4380 - www.boshart.com

ADJUSTABLE CABLE WEIGHT

This 1.20 lbs (544 grams) cable weight allows for easy adjustment of the tether length on sensor/non-internally weighted float switches, manufactured from zinc plated cast iron for superior corrosion resistance, with two internal grip rings to prevent slippage on the cord. Constructed in two halves which are held together with stainless steel bolts which thread directly into the castings, the bolt heads are countersunk to ensure that no debris catches on the bolt.

PART NO.	DESCRIPTION	LIST PRICE-A
890-AW-CI	Adjustable Cable Weight	17.09



ACCESSORIES

PART NO.	DESCRIPTION	BAG QTY	LIST PRICE-A
----------	-------------	---------	--------------

890-CC516BK 5/16" Black Nylon Cable Clip 100 0.21 each
It is highly recommended that this cable clip be installed to secure the power cord of a float switch, pump or liquid level alarm to either the wall or electrical outlet using the outlet faceplate screw. To prevent plug from being accidentally disconnected from the electrical outlet.

Must be ordered in bag quantities



890-CTR14BK 14" 50# Button Release UV Black 100 0.76 each
Releasable cable ties are ideal for fastening the float switch cord at the tether point. It's release feature allows the tie to be re-opened for easy adjustment of the tether length to change the pumping range for either more or less distance between the turn-on and turn-off levels.

Must be ordered in bag quantities



The cable clamp and cable tie are now included with the 860 and 870 series float switches and 850L and 850H level alarms. Bosharts has added the two items to meet or exceed industry standards in the Float and Alarm business.

TAPPED PITLESS ADAPTERS - FOR UNDERGROUND TANKS / DIRTY WATER

- 1-1/4" and 2" Tapped Pitless are for dirty water applications. The 1/4" FPT tapping provides a means to connect a 1/4" pipe to the pitless to allow easy removal of the pitless unit and pump. The pipe is guided by a rail/guide system that aligns the pitless elbow with the pitless slide when reinstalling (railing or guide system not included).

PART NO.	SIZE	TAPPING	QUANTITY	
			CTN	CASE
1-1/4" units are used with grinder pumps				
PA-125-TNL	1-1/4" Bronze	1/4"	1	10
P-125-SS-T	1-1/4" Stainless Steel	1/4"	1	8
2" units are used with all other sewage pumps				
PA-200-TNL	2" Bronze	1/4"	1	4
P-200-SS-T	2" Stainless Steel	1/4"	1	4



Also Available:

- 1" Tapped Pitless are for underground water well tank installations. The 1/4" FPT tapping provides a means to connect poly tubing to the pressure switch which is located near the buried tank.

PA-800-TNL	1" Bronze	1/4"	1	16
P-100-SS-T	1" Stainless Steel	1/4"	1	16

Refer to Section 11 for pricing on Tapped Pitless Adapters