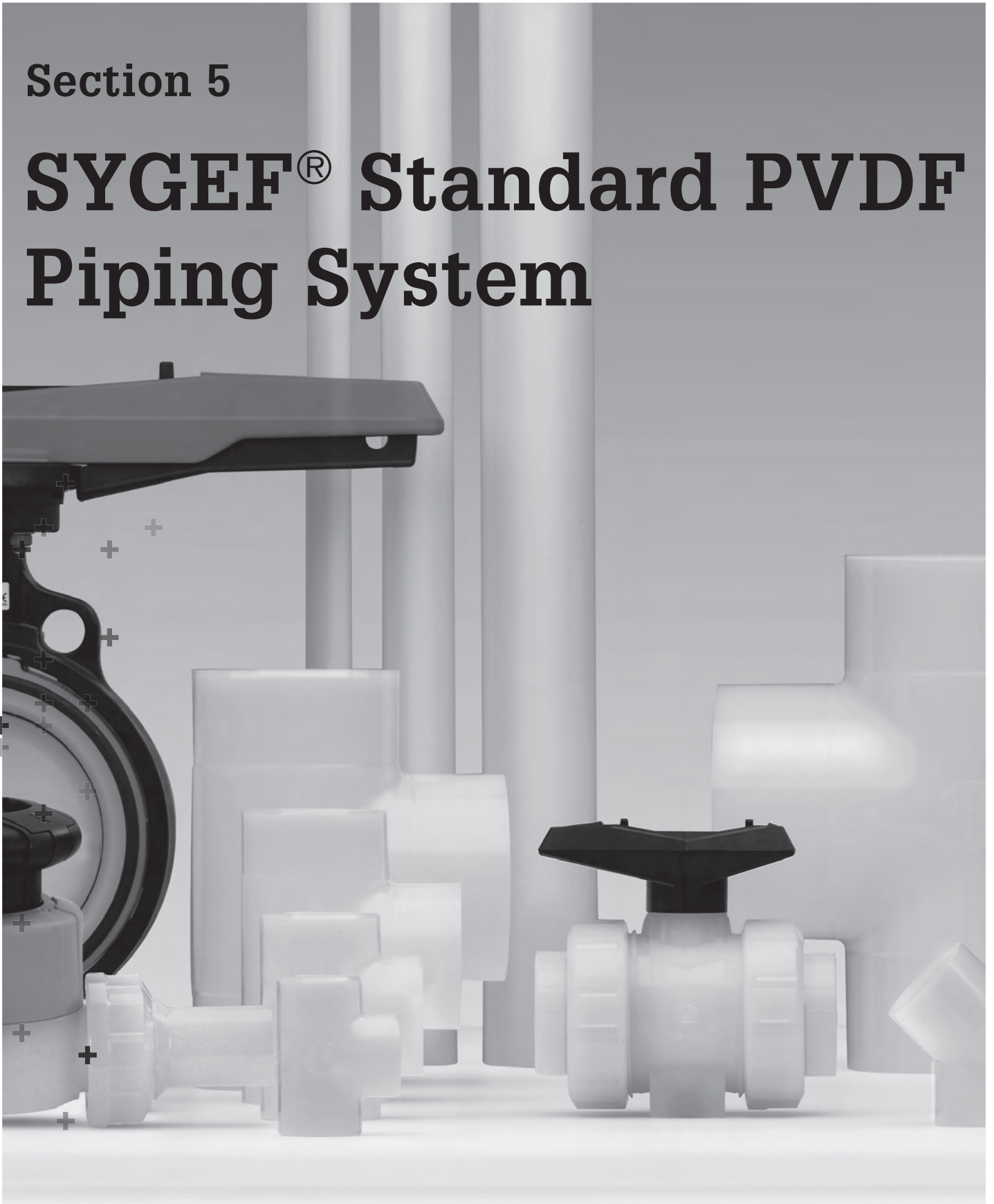


Section 5

SYGEF[®] Standard PVDF Piping System



SYGEF® Standard – Product Specification

Material	Polyvinylidene Fluoride (PVDF)
Color	opaque
Density	~1.78 g/cm ³ (ISO 1183 / ASTM D792)
Surface tension	30–35 mJ/m ²
Linear expansion coefficient	0.12–0.18 mm/mK (DIN 53752)
E-modulus	≥1700 N/mm ² (EN ISO 527 / ASTM D 790)
Thermal conductivity	0.19 W/mK (DIN 52612)
Surface resistivity	5 × 10 ¹⁴ Ωcm (IEC 60093)
Dimension	d 20 (½")–d 315 (12") in accordance to ISO 10931
Pressure rating	Pipes/fittings: 20–110 mm PN 16 (232 PSI); 160–315 mm PN 10 (150 PSI) Valves: separate specification
Temperature rating	from –20 °C to 140 °C (–4 °F to 284 °F)
Production	Fittings/valves: injection molded Pipes: extruded and stress relieved (ISO 10931-2) Valves: injection molded (additional available oil free treated and paint compatible / silicon free)
Surface finish	Inner surface Ra ≤ 0.5 μm (20 μin) for injection molded and extruded components
Marking	All components are embossed with a permanent identification during the production process to ensure full traceability. Lot No Material Dimension Pressure Rating
Testing and inspection (ISO 10931)	Inclusions Visual inspection Surface finish Dimension tolerance Pressure testing
Approvals/conformance	DIBt ASME BPE FDA CFR 21 177.2510 USP 25 class VI (physiological non-toxic) FM-4910 listing) UL 723 ASTM E-84 25/50 for building plenums for sizes 20–75 mm
Welding technology	BCF® Plus, bead and crevice free fusion, size d20 (½") – d110 (4") IR Plus®, infrared fusion (DVS 2207-6), size d20 (½") – d315 (12") Butt fusion (DVS 2207-15), size d20 (½") – d315 (12") Socket fusion (DVS 2207-15), size d20 (½") – d63 (2")
Documentation*	Certificate of Conformance with FDA, USP EN 10204 2.2 EN 10204 3.1
Packing**	Multiple components single bagged in specified bag
Labeling	Brand Name Product Description Code Number Material Dimension
Main applications	Uses include delivery of pharmaceutical grade purified water (PW) and DI water, using hot water, steam chemical or ozone sanitization. Due to its excellent chemical resistance it is widely used in chemical distribution systems.
	* On request ** Not for socket fusion products

Table of contents**Page**

Pipe

216



IR Plus/BCF Plus Fusion Fittings

217



Socket Fusion Fittings

226



Manual Valves

233

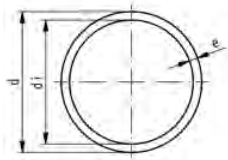


Miscellaneous

264

Pipe

A



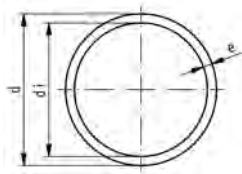
Pipe, PN 16, PVDF-Standard 25/50

Model:

- Material: PVDF
- Supplied in 5m (16.4 foot) length
- Certified for building air plenum according to UL 723 ASTM E-84 25/50, sizes 20-75mm

d (mm)	FM	Part No.	USD / m	lbs/meter	e (mm)	di (mm)
20	BCF, IR	* 175 484 203	49.43	0.463	1.9	16.2
25	BCF, IR	* 175 484 204	63.52	0.593	1.9	21.2
32	BCF, IR	* 175 484 205	97.62	0.959	2.4	27.2
40	BCF, IR	* 175 484 206	128.50	1.241	2.4	35.2
50	BCF, IR	* 175 484 207	194.82	1.874	3.0	44.0
63	BCF, IR	* 175 484 208	250.78	2.403	3.0	57.0
75	BCF, IR	* 175 484 209	352.33	3.417	3.6	67.8

A



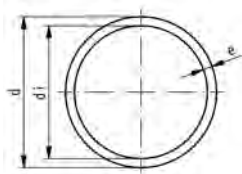
Pipe, PN 16, PVDF-Standard

Model:

- Material: PVDF
 - Supplied in 5m (16.4 foot) length
 - Material: PVDF
- * on request

d (mm)	FM	Part No.	USD / m	lbs/meter	e (mm)	di (mm)
90	BCF, IR	* 175 480 210	505.70	4.916	4.3	81.4
110	BCF, IR	* 175 480 211	766.84	7.341	5.3	99.4
*	250	IR	* 175 481 218	Call	11.9	226.2
*	280	IR	* 175 481 219	Call	13.4	253.2
*	315	IR	* 175 481 220	Call	15.0	285.0

A



Pipe, PN 10, PVDF-Standard

Model:

- Material: PVDF
- Supplied in 5m (16.4 foot) length

d (mm)	PN (bar)	FM	Part No.	USD / m	lbs/meter	e (mm)	di (mm)
160	10	IR	* 175 480 668	1,068.39	10.009	4.9	150.2
200	10	IR	* 175 480 669	1,598.96	15.851	6.2	187.6
225	10	IR	* 175 480 670	2,118.13	19.731	6.9	211.2
250	10	IR	* 175 480 671	2,545.08	24.471	7.7	234.6
315	10	IR	* 175 480 674	4,039.38	38.801	9.7	295.6

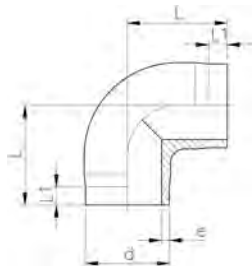
IR Plus/BCF Plus Fusion Fittings

A

90° Elbow, PN 16, PVDF-Standard



d (mm)	FM	Part No.	USD	weight (kg)	e (mm)	L (mm)	L1 (mm)
20	BCF, IR	735 108 606	14.20	0.017	1.9	38	25
25	BCF, IR	735 108 607	17.72	0.023	1.9	42	26
32	BCF, IR	735 108 608	32.95	0.040	2.4	46	26
40	BCF, IR	^ 735 108 609	50.57	0.060	2.4	51	28
50	BCF, IR	735 108 610	74.09	0.105	3.0	58	28
63	BCF, IR	735 108 611	128.50	0.198	3.0	66	28

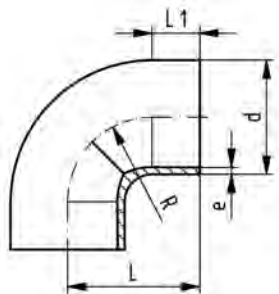


A

90° Elbow, PN 16, PVDF-Standard

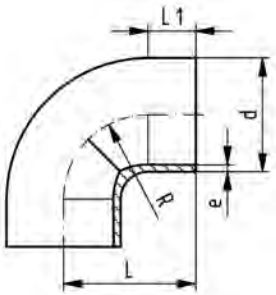


d (mm)	FM	Part No.	USD	weight (kg)	e (mm)	L (mm)	L1 (mm)	R (mm)
75	BCF, IR	^ 735 018 712	216.37	0.243	3.6	75	23	62
90	BCF, IR	735 018 713	324.46	0.423	4.3	90	23	77
110	BCF, IR	735 018 714	592.54	0.705	5.3	110	23	98
250	IR	^ 735 018 746	Call	6.536	11.9	254	48	232
280	IR	735 018 747	Call	9.182	13.4	283	48	262
315	IR	^ 735 018 748	Call	13.031	15.0	321	48	297



A

90° Elbow Sweep Radius, PN 10, PVDF-Standard



d (mm)	FM	Part No.	USD weight (kg)	e (mm)	L (mm)	L1 (mm)	R (mm)	
160	IR	735 018 517	1,025.91	1.540	4.9	160	33	141
200	IR	735 018 519	1,359.59	2.018	6.2	200	33	181
225	IR	* 735 018 520	1,652.85	3.952	6.9	220	33	200
250	IR	735 018 521	Call	4.304	7.7	254	48	232
280	IR	735 018 522	Call	6.370	8.6	283	48	262
315	IR	735 018 523	Call	9.032	9.7	321	48	297

A

45° Elbow, PN 16, PVDF-Standard



d (mm)	FM	Part No.	USD weight (kg)	e (mm)	L (mm)	L1 (mm)	R (mm)
20	BCF, IR	735 158 606	18.86	0.014	1.9	32	25
25	BCF, IR	735 158 607	22.38	0.019	1.9	34	26
32	BCF, IR	735 158 608	24.77	0.033	2.4	36	26
40	BCF, IR	^ 735 158 609	48.29	0.042	2.4	39	28
50	BCF, IR	735 158 610	60.00	0.084	3.0	42	30
63	BCF, IR	735 158 611	87.05	0.121	3.0	47	31
75	BCF, IR	^ 735 158 612	185.49	0.160	3.6	49	32
90	BCF, IR	735 158 613	277.72	0.271	4.3	57	37
110	BCF, IR	735 158 614	488.08	0.499	5.3	70	46

A

45° Elbow, PN 10, PVDF-Standard



d (mm)	FM	Part No.	USD weight (kg)	e (mm)	L (mm)	L1 (mm)	
160	IR	* 735 158 517	891.19	0.986	4.9	100	62
200	IR	* 735 158 519	1,099.48	1.928	6.2	124	77
225	IR	* 735 158 520	1,401.04	2.732	6.9	140	88
250	IR	735 158 521	Call	2.402	7.7	120	47
315	IR	735 158 523	Call	4.923	9.7	147	47

A

Tee, PN 16, PVDF-Standard



d (mm)	FM	Part No.	USD	weight (kg)	e (mm)	L (mm)	L1 (mm)
20	BCF, IR	735 208 606	22.38	0.023	1.9	38	25
25	BCF, IR	735 208 607	25.91	0.032	1.9	42	27
32	BCF, IR	735 208 608	41.24	0.056	2.4	46	27
40	BCF, IR	^ 735 208 609	61.14	0.083	2.4	51	28
50	BCF, IR	735 208 610	96.48	0.156	3.0	58	28
63	BCF, IR	735 208 611	152.33	0.270	3.0	66	28
75	BCF, IR	^ 735 208 612	270.47	0.336	3.6	75	32
90	BCF, IR	735 208 613	410.36	0.587	4.3	90	39
110	BCF, IR	735 208 614	556.48	1.054	5.3	110	48

A

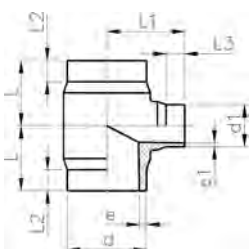
Tee, PN 10, PVDF-Standard



d (mm)	FM	Part No.	USD	weight (kg)	e (mm)	L (mm)	L1 (mm)
160	IR	* 735 208 517	1,082.90	2.250	4.9	160	71
200	IR	* 735 208 519	1,442.49	4.297	6.2	200	80
225	IR	* 735 208 520	1,864.25	6.900	6.9	220	86
250	IR	735 208 521	Call	6.939	7.7	223	70
315	IR	735 208 523	Call	13.882	9.7	274	74

B

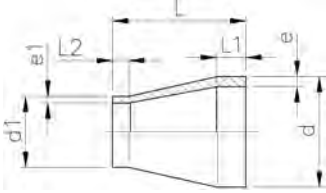
Reducer Tee, PN 10, PVDF-Standard



d - d1 (mm)	FM	Part No.	USD	weight (kg)	e (mm)	e1 (mm)	L (mm)	L1 (mm)	L2 (mm)	L3 (mm)
160 - 90	IR	^ 735 208 562	1,052.85	2.300	4.9	4.3	155	130	60	25
160 - 110	IR	^ 735 208 561	1,052.85	2.300	4.9	5.3	155	130	60	25
225 - 90	IR	^ 735 208 570	1,702.59	4.400	6.9	4.3	155	160	60	25
225 - 110	IR	^ 735 208 569	1,702.59	4.286	6.9	5.3	155	160	60	25
225 - 160	IR	735 208 568	Call	4.239	6.9	4.9	155	170	60	35

A

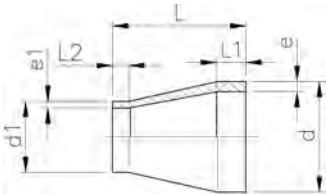
Reducer, PN 16, PVDF-Standard



d - d1 (mm)	FM	Part No.	USD	e (mm)	e1 (mm)	L (mm)	L1 (mm)	L2 (mm)
25 - 20	BCF, IR	735 908 637	16.48	1.9	1.9	50	22	22
32 - 20	BCF, IR	735 908 642	23.52	2.4	1.9	50	22	22
32 - 25	BCF, IR	735 908 641	23.52	2.4	1.9	50	22	22
40 - 20	BCF, IR	^ 735 908 648	29.43	2.4	1.9	58	22	24
40 - 25	BCF, IR	^ 735 908 647	29.43	2.4	1.9	55	22	24
40 - 32	BCF, IR	^ 735 908 646	30.57	2.4	2.4	55	22	24
50 - 25	BCF, IR	735 908 654	35.34	3.0	1.9	60	22	25
50 - 32	BCF, IR	735 908 653	35.34	3.0	2.4	60	22	25
50 - 40	BCF, IR	^ 735 908 652	35.34	3.0	2.4	60	22	25
63 - 32	BCF, IR	735 908 660	48.29	3.0	2.4	65	22	25
63 - 40	BCF, IR	^ 735 908 659	48.29	3.0	2.4	65	22	25
63 - 50	BCF, IR	735 908 658	48.29	3.0	3.0	65	22	25
75 - 40	BCF, IR	^ 735 908 666	92.95	3.6	2.4	68	24	25
75 - 50	BCF, IR	^ 735 908 665	92.95	3.6	3.0	65	24	25
75 - 63	BCF, IR	^ 735 908 664	92.95	3.6	3.0	65	24	25
90 - 63	BCF, IR	735 908 671	109.84	4.3	3.0	75	25	30
90 - 75	BCF, IR	^ 735 908 670	109.84	4.3	3.6	75	25	35
110 - 63	BCF, IR	735 908 678	159.59	5.3	3.0	90	30	30
110 - 75	BCF, IR	^ 735 908 677	159.59	5.3	3.6	90	30	35
110 - 90	BCF, IR	735 908 676	159.59	5.3	4.3	90	30	35

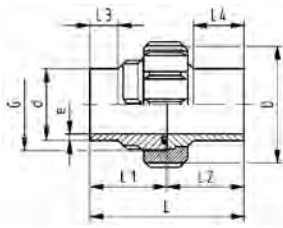
A

Reducer, PN 10, PVDF-Standard



d - d1 (mm)	FM	PN (bar)	SDR	Part No.	USD	weight (kg)	e (mm)	e1 (mm)	L (mm)	L1 (mm)	L2 (mm)
160 - 110	IR	10	33 - 21	735 908 590	462.18	0.573	4.9	5.3	120	40	40
200 - 160	IR	10	33 - 33	735 908 592	445.60	0.830	6.2	4.9	145	50	40
225 - 110	IR	10	33 - 21	* 735 908 595	580.31	0.940	6.9	5.3	160	55	35
225 - 160	IR	10	33 - 33	* 735 908 596	580.31	1.140	6.9	4.9	160	55	40
225 - 200	IR	10	33 - 33	* 735 908 597	580.31	1.200	6.9	6.2	160	55	50

A



Union (FKM black), PN 16, PVDF-Standard

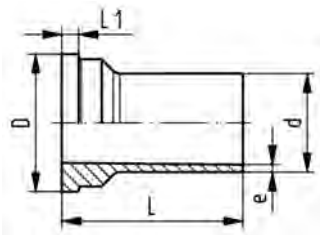
Model:

- d75, d90 and d100 with buttress-shaped thread

d (mm)	Part No.	USD	weight (kg)
20	735 528 606	45.91	0.074
25	735 528 607	57.62	0.110
32	735 528 608	74.09	0.153
40	^ 735 528 609	108.81	0.220
50	735 528 610	143.01	0.293
63	735 528 611	215.54	0.449
75	^ 735 528 612	360.62	0.740
90	735 528 613	486.01	0.773
110	735 528 614	641.45	1.054

D (mm)	e (mm)	L (mm)	L1 (mm)	L2 (mm)	L3 (mm)	L4 (mm)	G (R/Rp BS Thread) (inch)
43	1.9	106	53	53	25	37	1
53	1.9	112	56	56	25	38	1 1/4
60	2.4	118	59	59	25	40	1 1/2
74	2.4	124	62	62	25	41	2
82	3.0	130	65	65	25	43	2 1/4
100	3.0	136	68	68	25	44	2 3/4
133	3.6	132	66	66	24	34	S107.5x3.6
133	4.3	130	65	65	24	48	S107.5x3.6
155	5.3	130	65	65	25	45	S127.5x3.6

A



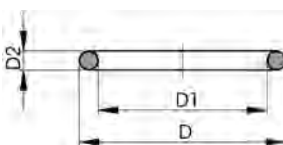
Union End, PN 16, PVDF-Standard

Model:

- Suitable for SYGEF Standard Union Butt Fusion

d (mm)	FM	Part No.	USD	weight (kg)	D (mm)	e (mm)	L (mm)	L1 (mm)
20	BCF, IR	735 608 606	21.00	0.020	30	1.9	53	5
25	BCF, IR	735 608 607	24.00	0.030	39	1.9	56	5
32	BCF, IR	735 608 608	31.10	0.044	45	2.4	59	6
40	BCF, IR	735 608 609	36.30	0.069	57	2.4	62	6
50	BCF, IR	735 608 610	41.45	0.083	63	3.0	65	7
63	BCF, IR	735 608 611	60.10	0.130	78	3.0	68	8
75	BCF, IR	* 735 608 612	112.00	0.209	101	3.6	66	9
90	BCF, IR	* 735 608 613	132.64	0.187	101	4.3	65	9
110	BCF, IR	* 735 608 614	196.89	0.263	121	5.3	65	10

B



O-Ring for PROGEF, SYGEF Standard IR/BCF and Socket Fusion Unions

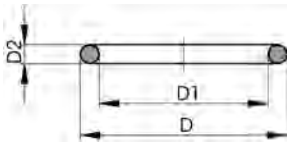
Model:

- For unions and adaptor unions
- Hardness approx. 65° Shore
- EPDM minimum temperature -40°F
- FKM minimum temperature -15°F
- * for unions PVC-U, PVC-C and ABS: 21 51 01, 21 51 11, 21 53 03, 21 53 08, 21 55 04, 21 55 13, 21 55 18, 23 51 01 and 29 51 01 only

d (mm)	DN (mm)	EPDM Part No.	USD	weight (kg)	FKM Part No.	USD	weight (kg)
20	15	^ 748 410 006	3.10	0.002	^ 749 410 006	5.20	0.002
25	20	^ 748 410 007	3.10	0.002	^ 749 410 007	6.20	0.002
32	25	748 410 008	6.20	0.003	749 410 008	7.30	0.002

table continued on the next page

B



d (mm)	DN (mm)	EPDM Part No.	USD	weight (kg)	FKM Part No.	USD	weight (kg)
40	32	748 410 009	6.20	0.003	749 410 009	16.60	0.007
50	40	748 410 010	6.20	0.004	749 410 010	18.70	0.060
63	50	748 410 011	8.30	0.005	749 410 011	19.70	0.003
75	65	* 748 410 014	12.50	0.007	* 749 410 014	29.00	0.012
90	80	* 748 410 015	19.27	0.008	* 749 410 015	32.12	0.015
110	100	* 748 410 016	19.27	0.016	* 749 410 016	50.78	0.031

d (mm)	DN (mm)	D (mm)	D1 (mm)	D2 (mm)	closest inch (inch)
20	15	27	20	3.53	½
25	20	35	28	3.53	¾
32	25	40	33	3.53	1
40	32	51	41	5.34	1 ¼
50	40	58	47	5.34	1 ½
63	50	70	60	5.34	2
75	65	93	82	5.34	2 ½
90	80	112	101	5.34	3
110	100	134	120	6.99	4

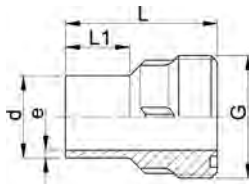
A



Union Bushing, PN 16, PVDF-Standard

Model:

- Suitable for SYGEF Standard Union Butt Fusion
- d75, d90 and d100 with buttress-shaped thread



d (mm)	FM	Part No.	USD	weight (kg)	G (R/Rp BS Thread) (inch)	e (mm)	L (mm)	L1 (mm)
20	BCF, IR	* 735 648 606	29.43	0.025	1	1.9	53	25
25	BCF, IR	* 735 648 607	35.34	0.039	1 1/4	1.9	56	25
32	BCF, IR	* 735 648 608	41.24	0.055	1 1/2	2.4	59	25
40	BCF, IR	* 735 648 609	54.09	0.081	2	2.4	62	25
50	BCF, IR	* 735 648 610	70.57	0.110	2 1/4	3.0	65	25
63	BCF, IR	* 735 648 611	115.03	0.158	2 3/4	3.0	68	25
75	BCF, IR	* 735 648 612	200.00	0.277	S 107.5 x 3.6	3.6	66	24
90	BCF, IR	* 735 648 613	211.40	0.275	S 107.5 x 3.6	4.3	65	24
110	BCF, IR	* 735 648 614	232.12	0.343	S 127.5 x 3.6	5.3	65	25

B

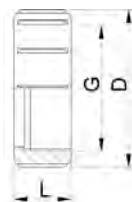


Union Nut, PN 16, PVDF-Standard

- d75, d90 and d110 with buttress shaped thread

Note:

For dimensions d75-110 please see instructions for installation

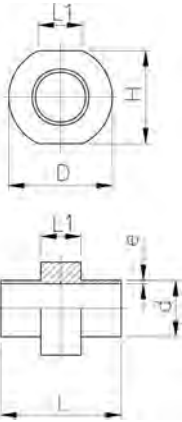


Socket Fu- sion d (mm)	Butt Fusion d (mm)	Part No.	USD	weight (kg)	D (mm)	G (R/Rp BS Thread) (inch)	G (inch)	L (mm)
20	20	735 690 406	28.00	0.021	43	1	1	22
25	25	735 690 407	35.20	0.030	53	1 1/4	1 ¼	24
32	32	735 690 408	45.60	0.035	60	1 1/2	1 ½	26
40	40	735 690 409	64.30	0.065	74	2	2	29
50	50	735 690 410	95.40	0.093	82	2 1/4	2 ¼	33
63	63	735 690 411	149.20	0.144	100	2 3/4	2 ¾	35
	75 - 90	* 735 690 422	200.00	0.289	133			40
	110	* 735 690 423	270.47	0.403	155			42

B

Instrument Installation Fitting, PN 16, PVDF Standard

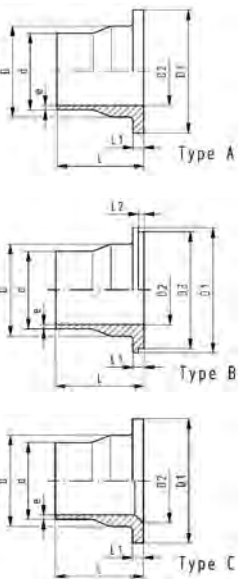
Add "T" to end of part number and fee to list price for each factory milled thread (max. diameter is 3/4"). See published price list for fee.



d (mm)	FM	Part No.	USD	weight (kg)	e (mm)	L (mm)	D (mm)	H (mm)	L1 (mm)
20	BCF, IR	* 735 918 706	493.26	0.170	1.9	140	71	58	40
25	BCF, IR	* 735 918 707	503.63	0.200	1.9	140	75	63	40
32	BCF, IR	* 735 918 708	573.06	0.360	2.4	140	81	70	40
40	BCF, IR	* 735 918 709	582.38	0.390	2.4	140	88	78	40
50	BCF, IR	* 735 918 710	642.49	0.410	3.0	140	97	88	40
63	BCF, IR	* 155 918 711	790.67	0.430	3.0	140	109	101	40
75	BCF, IR	* 155 918 712	933.68	0.450	3.6	140	120	113	40
90	BCF, IR	* 155 918 713	948.19	0.470	4.3	140	134	128	40
110	BCF, IR	* 155 918 714	1,145.08	0.550	5.3	140	153	148	40

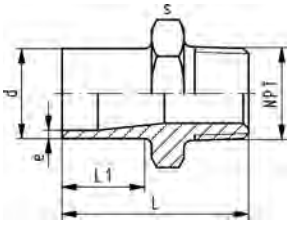
A

Flange Adaptor, PN 16/PN 10, ANSI Serrated, PVDF-Standard



d (mm)	FM	PN	Part No.	USD	weight (lb)	e (mm)	D (mm)	D1 (mm)	D2 (mm)	L (mm)	L1 (mm)	Type
20	BCF, IR	16	735 798 806	9.43	0.064	1.9	26	45	15	54	6	A
25	BCF, IR	16	735 798 857	12.95	0.095	1.9	32	54	20	56	7	A
32	BCF, IR	16	735 798 858	12.95	0.139	2.4	40	63	26	58	7	A
40	BCF, IR	16	^ 735 798 859	20.00	0.196	2.4	49	73	34	68	8	A
50	BCF, IR	16	735 798 860	23.52	0.309	3.0	60	82	43	69	8	A
63	BCF, IR	16	735 798 811	37.62	0.474	3.0	75	102	56	72	9	A
75	BCF, IR	16	^ 735 798 812	92.95	0.717	3.6	89	122	66	80	10	A
90	BCF, IR	16	735 798 861	121.24	0.858	4.3	105	133	78	81	12	A
110	BCF, IR	16	735 798 814	215.54	1.263	5.3	125	158	100	81	13	C
160	IR	10	735 798 867	816.58	2.143	4.9	175	212	151	93	17	C
200	IR	10	735 798 869	1,113.99	3.708	6.2	232	268	207	102	22	C
225	IR	10	* 735 798 870	1,205.18	3.719	6.9	235	268	207	102	22	A

A



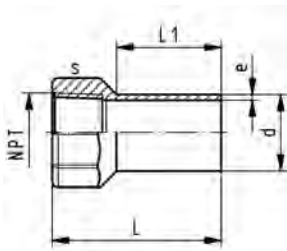
Male NPT Adaptor, PN 16, PVDF-Standard

Model:

- With butt fusion spigot and NPT tapered male thread
- Avoid stress when installing and large changes in temperature
- Connection to plastic thread only
- Do not apply solvent-based or other sealing compounds which could damage PVDF

d	NPT	FM	Part No.	USD weight	e	L	s	L1	
(mm)	(inch)			(kg)	(mm)	(mm)	(mm)	(mm)	
20	¾	BCF, IR	735 914 555	48.29	0.023	1.9	50	32	26
20	½	BCF, IR	735 914 556	50.57	0.030	1.9	53	32	26
25	¾	BCF, IR	735 914 557	51.81	0.032	1.9	55	36	26
32	1	BCF, IR	735 914 558	68.19	0.052	2.4	57	46	26
40	1 ¼	BCF, IR	735 914 559	75.34	0.075	2.4	60	55	26
50	1 ½	BCF, IR	735 914 560	126.42	0.122	3.0	63	65	26
63	2	BCF, IR	735 914 561	148.19	0.176	3.0	69	75	27

A



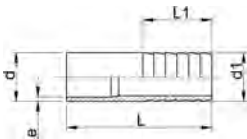
Female NPT Adaptor, PN 16, PVDF-Standard

Model:

- With butt fusion spigot and NPT taper female thread
- Avoid stress when installing and large changes in temperature
- Connection to plastic thread only
- Do not apply solvent-based or other sealing compounds which could damage PVDF

d	NPT	FM	Part No.	USD weight	e	L	s	L1		
(mm)	(inch)			(kg)	(mm)	(mm)	(mm)	(mm)		
20	¾	BCF, IR	735 914 585	43.51	0.029	1.9	54	32	30	
20	½	BCF, IR	735 914 586	43.51	0.027	1.9	54	32	30	
25	¾	BCF, IR	735 914 587	49.60	0.033	1.9	58	38	30	
32	1	BCF, IR	735 914 588	75.76	0.066	2.4	63	48	30	
40	1 ¼	BCF, IR	735 914 589	92.98	0.085	2.4	67	58	30	
50	1 ½	BCF, IR	735 914 590	130.14	0.108	3.0	67	65	30	
*	63	2	BCF, IR	735 914 591	158.30	0.190	3.0	73	80	30

A

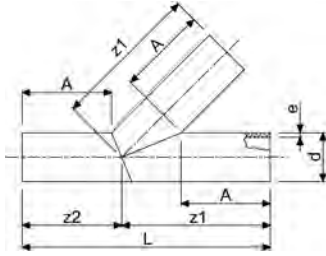


Hose Adapter, PN 16, PVDF-Standard

d - d1	FM	Part No.	USD weight	e	L	L1	
(mm)			(kg)	(mm)	(mm)	(mm)	
20 - 20	BCF, IR	* 735 968 606	61.14	0.015	1.9	64	27
25 - 25	BCF, IR	* 735 968 607	68.19	0.027	1.9	75	36
32 - 32	BCF, IR	* 735 968 608	78.86	0.042	2.4	82	36
40 - 40	BCF, IR	^ 735 968 609	109.84	0.063	2.4	84	42
50 - 50	BCF, IR	* 735 968 610	136.79	0.084	3.0	90	48
63 - 60	BCF, IR	* 735 968 611	167.88	0.118	3.0	100	50

B

45° Wye, PVDF-Standard

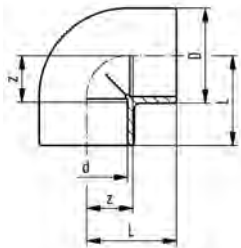


d (mm)	Part No.	USD	e (mm)	A (inch)	z1 (inch)	z2 (inch)	L (inch)	closest inch (inch)
50	* 155 345 050	362.69	3.0	5.91	8.28	6.31	14.59	1 ½
63	* 155 345 063	521.24	3.0	5.91	8.90	6.42	15.32	2
75	* 155 345 075	611.40	3.6	5.91	9.47	6.52	15.99	2 ½
90	* 155 345 090	710.88	4.3	7.87	12.15	8.61	20.76	3
110	* 155 345 110	1,164.77	5.3	7.87	13.10	8.77	21.87	4
160	* 155 345 160	1,987.56	4.9	7.87	15.48	9.18	24.66	6
200	* 155 345 200	2,406.22	6.2	9.84	19.35	11.47	30.82	8
225	* 155 345 225	3,304.66	6.9	9.84	20.54	11.68	32.21	9
250	* 155 345 250	Call	7.7	11.81	23.70	13.86	37.56	10
315	* 155 345 315	Call	9.7	13.78	28.74	16.38	45.12	12

Socket Fusion Fittings

A

90° Elbow, PN 16, PVDF-Standard, Socket Fusion



d (mm)	Part No.	USD	D (mm)	L (mm)	z (mm)
16	735 100 105	12.95	26	25	12
20	735 100 106	14.20	27	28	14
25	735 100 107	17.72	32	32	16
32	735 100 108	34.09	40	38	20
40	735 100 109	50.57	49	44	24
50	735 100 110	74.09	60	51	28
63	735 100 111	128.50	75	62	35

A

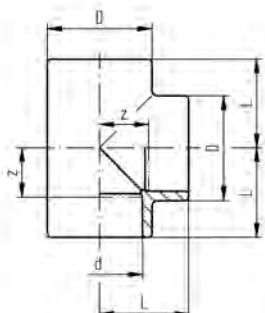
45° Elbow, PN 16, PVDF-Standard, Socket Fusion



d (mm)	Part No.	USD	weight (kg)	D (mm)	L (mm)	z (mm)
16	735 150 105	18.86	0.017	23	20	7
20	735 150 106	18.86	0.020	27	21	7
25	735 150 107	20.00	0.032	32	24	8
32	735 150 108	22.38	0.050	40	28	10
40	735 150 109	48.29	0.081	49	33	13
50	735 150 110	58.86	0.119	60	36	13
63	735 150 111	85.91	0.211	75	43	16

A

Tee, PN 16, PVDF-Standard, Socket Fusion



d (mm)	Part No.	USD	weight (kg)	D (mm)	L (mm)	z (mm)
16	735 200 105	22.38	0.039	26	25	12
20	735 200 106	22.38	0.034	27	28	14
25	735 200 107	25.91	0.052	32	32	16
32	735 200 108	41.24	0.092	40	38	20
40	735 200 109	63.52	0.136	49	44	24
50	735 200 110	96.48	0.210	60	51	28
63	735 200 111	152.33	0.371	75	62	35

A

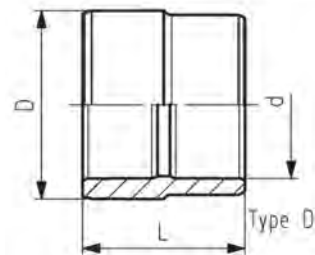
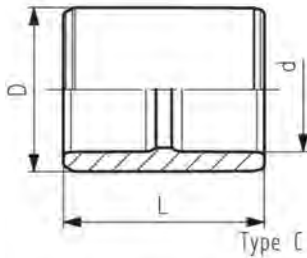
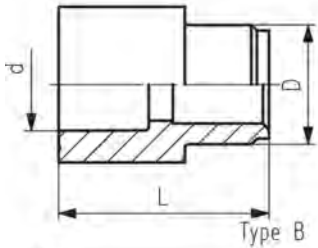
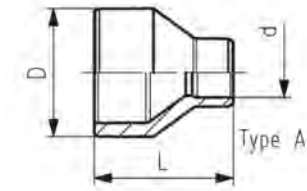


Reducer Bushing, PN 16, PVDF-Standard, Socket Fusion

Attention:

- Z dimension (distance between fused pipe ends) depends on use of reducer. See diagrams below.

D-d (mm)	Part No.	USD weight (kg)	L Type (mm)
20 - 16	735 910 334	16.48	0.017 35 B
25 - 20	735 910 337	16.48	0.016 37 A
32 - 20	735 910 342	21.24	0.023 43 A
32 - 25	735 910 107	21.24	0.023 39 C
40 - 20	735 910 348	30.57	0.034 48 A
40 - 25	735 910 347	30.57	0.035 48 A
40 - 32	735 910 108	30.57	0.038 43 C
50 - 20	735 910 355	31.81	0.059 54 A
50 - 25	735 910 354	31.81	0.059 54 A
50 - 32	735 910 353	31.81	0.061 54 A
50 - 40	735 910 109	31.81	0.062 48 D
63 - 20	735 910 362	57.62	0.102 64 A
63 - 25	735 910 361	57.62	0.105 64 A
63 - 32	735 910 360	57.62	0.108 64 A
63 - 40	735 910 359	57.62	0.118 64 A
63 - 50	735 910 110	57.62	0.102 54 D



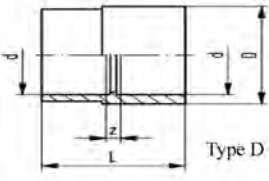
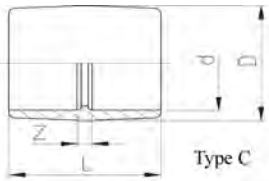
overview about functionality

main function						additional functions											
reduction spigot - socket						reduction socket - socket				reduction spigot - spigot				reduction socket - spigot			
Code	PN	L	spigot D	socket d	L Z	socket D	socket d	L	Z	spigot D	spigot d	L	Z	socket D	spigot d	L	Z
735 910 334	16	35	20	16	35 22												
735 910 337	16	37	25	20	37 23												
735 910 342	16	43	32	20	43 29	25	20	43	13								
735 910 107	16	39	32	25	39 23												
735 910 348	16	48	40	20	48 34	32	20	48	16								
735 910 347	16	48	40	25	48 32	32	25	48	14	40	32	48	48				
735 910 108	16	43	40	32	43 25												
735 910 355	16	54	50	20	54 40	40	20	54	20								
735 910 354	16	54	50	25	54 38	40	25	54	18	50	32	54	54	40	32	54	34
735 910 353	16	54	50	32	54 36	40	32	54	16	50	40	54	54				
735 910 109	16	48	50	40	48 28												
735 910 362	16	64	63	20	64 50	50	20	64	27								
735 910 361	16	64	63	25	64 48	50	25	64	25	63	32	64	64	50	32	64	41
735 910 360	16	64	63	32	64 46	50	32	64	23	63	40	64	64	50	40	64	41
735 910 359	16	64	63	40	64 44	50	40	64	21	63	50	64	64				
735 910 110	16	54	63	50	54 31												

please note: illustration of the functions not inevitably conform to respective type!

A

Coupling, PN 16, PVDF-Standard, Socket Fusion



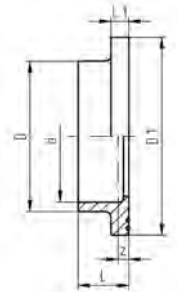
Model:

- Sizes d25 - d50 can be used as straight coupling or reducing bushing, as indicated

d (mm)	D-d (mm)	PN (bar)	Part No.	USD	SP	weight (kg)	Type	D (mm)	L (mm)	z (mm)
16	-	16	735 910 105	11.81	10	0.020	C	26	33	7
20	-	16	735 910 106	11.81	2	0.013	C	27	35	7
25	32 - 25	16	735 910 107	21.24	2	0.023	C	32	39	7
32	40 - 32	16	735 910 108	30.57	2	0.038	C	40	43	7
40	50 - 40	16	735 910 109	31.81	2	0.062	D	50	48	8
50	63 - 50	16	735 910 110	57.62	2	0.102	D	63	54	8
63	-	16	735 910 111	91.71	2	0.146	C	75	62	8

A

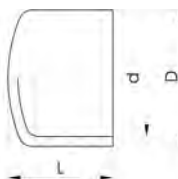
Flange Adaptor, PN 16, ANSI Serrated, PVDF-Standard, Socket Fusion



d (mm)	Part No.	USD	weight (lb)	D (mm)	D1 (mm)	L (mm)	L1 (mm)	z (mm)
20	735 790 206	10.67	0.042	27	45	19	6	3
25	735 790 257	10.67	0.082	33	54	21	7	3
32	735 790 258	12.95	0.112	41	63	23	7	3
40	735 790 259	12.95	0.161	50	73	25	8	3
50	735 790 260	21.24	0.209	61	82	28	8	3
63	735 790 211	37.62	0.311	76	102	32	9	3

A

Cap, PN 16, PVDF-Standard, Socket Fusion



d (mm)	Part No.	USD	weight (kg)	D (mm)	L (mm)
16	735 960 105	18.86	0.013	25	24
20	735 960 106	18.86	0.010	27	23
25	735 960 107	24.77	0.017	32	26
32	735 960 108	25.91	0.029	40	30
40	735 960 109	41.24	0.045	49	34
50	735 960 110	57.62	0.074	60	39
63	735 960 111	84.66	0.126	75	46

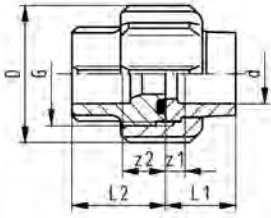
A



Union (FKM black), PN 16, PVDF-Standard, Socket Fusion

Model:

- With fusion socket metric
- Joining face: with O-ring groove
- Supplied with FKM O-Ring part# 749410005 - 011, respectively
- Please see installation instructions



d (mm)	Part No.	USD	weight (kg)	D (mm)	G(R/Rp BS Thread) (inch)	G (inch)	L1 (mm)	L2 (mm)	z1 (mm)	z (mm)
16	735 510 105	41.24	0.025	35	¾	¾	18	24	5	11
20	735 510 106	48.29	0.057	43	1	1	19	26	5	12
25	735 510 107	56.48	0.090	53	1 ¼	1 ¼	21	28	5	12
32	735 510 108	75.34	0.118	60	1 ½	1 ½	23	30	5	12
40	735 510 109	112.95	0.195	74	2	2	25	34	5	14
50	735 510 110	152.33	0.244	82	2 ¼	2 ¼	28	39	5	16
63	735 510 111	229.02	0.403	100	2 ¾	2 ¾	32	47	5	20

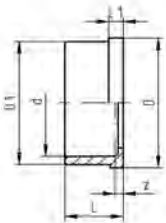
A



Union End, PN 16, PVDF-Standard, Socket Fusion

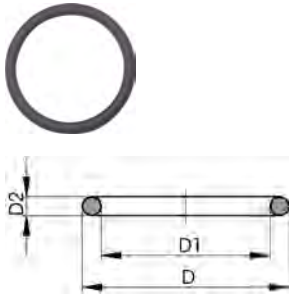
Model:

- Suitable for SYGEF Standard Union Socket Fusion



d (mm)	Part No.	USD	D (mm)	D1 (mm)	L (mm)	L1 (mm)	z (mm)
16	735 600 105	16.50	24	22	18	4	5
20	735 600 106	17.00	30	28	19	5	5
25	735 600 107	20.00	39	36	21	5	5
32	735 600 108	22.80	45	42	23	6	5
40	735 600 109	32.10	57	53	25	6	5
50	735 600 110	36.30	63	59	28	7	5
63	735 600 111	50.00	78	74	32	7	5

B



O-Ring for PROGEF, SYGEF Standard IR/BCF and Socket Fusion Unions

Model:

- For unions and adaptor unions
- Hardness approx. 65° Shore
- EPDM minimum temperature -40°F
- FKM minimum temperature -15°F
- * for unions PVC-U, PVC-C and ABS: 21 51 01, 21 51 11, 21 53 03, 21 53 08, 21 55 04, 21 55 13, 21 55 18, 23 51 01 and 29 51 01 only

d (mm)	DN (mm)	EPDM Part No.	USD	weight (kg)	FKM Part No.	USD	weight (kg)
16	10	748 410 005	3.00	0.004	749 410 005	3.30	0.002
20	15	^ 748 410 006	3.10	0.002	^ 749 410 006	5.20	0.002
25	20	^ 748 410 007	3.10	0.002	^ 749 410 007	6.20	0.002
32	25	748 410 008	6.20	0.003	749 410 008	7.30	0.002
40	32	748 410 009	6.20	0.003	749 410 009	16.60	0.007
50	40	748 410 010	6.20	0.004	749 410 010	18.70	0.060
63	50	748 410 011	8.30	0.005	749 410 011	19.70	0.003

d (mm)	DN (mm)	D (mm)	D1 (mm)	D2 (mm)	closest inch (inch)
16	10	21	16	2.62	¾
20	15	27	20	3.53	½
25	20	35	28	3.53	¾
32	25	40	33	3.53	1
40	32	51	41	5.34	1 ¼
50	40	58	47	5.34	1 ½
63	50	70	60	5.34	2

A



Union Bushing, PN 16, PVDF-Standard, Socket Fusion

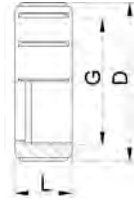
Model:

- Suitable for SYGEF Standard Union Socket Fusion

d (mm)	PN (bar)	Part No.	USD	SP	weight (kg)
16	16	* 735 640 105	22.38	10	0.011
20	16	* 735 640 106	23.52	4	0.019
25	16	* 735 640 107	25.91	4	0.027
32	16	* 735 640 108	34.09	4	0.040
40	16	* 735 640 109	42.38	4	0.068
50	16	* 735 640 110	57.62	2	0.090
63	16	* 735 640 111	97.62	2	0.159

d (mm)	G (R/Rp BS Thread) (inch)	G (R/Rp BS Thread) (inch)	G (inch)	L (mm)	z (mm)
16	3/4	¾	¾	24	11
20	1	1	1	26	12
25	1 1/4	1 ¼	1 ¼	28	12
32	1 1/2	1 ½	1 ½	30	12
40	2	2	2	34	14
50	2 1/4	2 ¼	2 ¼	39	16
63	2 3/4	2 ¾	2 ¾	47	20

B



Union Nut, PN 16, PVDF-Standard

Model:

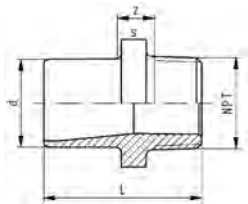
- Material: PVDF
- d75, d90 and d110 with butress shaped thread

Note:

For dimensions d75-110 please see instructions for installation

Socket Fusion d (mm)	Butt Fusion d (mm)	Part No.	USD	weight (kg)	D (mm)	G (R/Rp BS Thread) (inch)	G (inch)	L (mm)
16	16	735 690 405	25.50	0.011	35	3/4	¾	21
20	20	735 690 406	28.00	0.021	43	1	1	22
25	25	735 690 407	35.20	0.030	53	1 1/4	1 ¼	24
32	32	735 690 408	45.60	0.035	60	1 1/2	1 ½	26
40	40	735 690 409	64.30	0.065	74	2	2	29
50	50	735 690 410	95.40	0.093	82	2 1/4	2 ¼	33
63	63	735 690 411	149.20	0.144	100	2 3/4	2 ¾	35
	75 - 90	* 735 690 422	200.00	0.289	133			40
	110	* 735 690 423	270.47	0.403	155			42

A



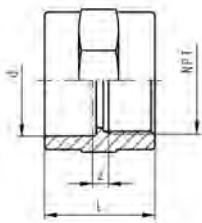
Male NPT Adapter, PN 16, PVDF-Standard, Socket Fusion

Model:

- Material: PVDF
- With socket fusion spigot and taper male thread
- Connection to plastic thread only
- Do not apply solvent-based or other sealing compounds which could damage PVDF
- Avoid stress when installing and large changes in temperature

d (mm)	NPT (inch)	Part No.	USD	weight (kg)	L (mm)	s (mm)	z (mm)
16	¾	735 914 505	23.52	0.014	35	27	12
20	½	735 914 506	24.77	0.025	53	32	25
25	¾	735 914 507	24.77	0.033	55	36	24
32	1	735 914 508	47.05	0.053	57	46	22
40	1 ¼	735 914 509	64.66	0.080	60	55	21
50	1 ½	735 914 510	84.66	0.113	63	65	19
63	2	735 914 511	104.66	0.160	69	75	18

A



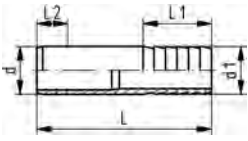
Female NPT Adapter, PN 16, PVDF-Standard, Socket Fusion

Model:

- Material: PVDF
- With socket fusion end and taper female thread
- Connection to plastic thread only
- Do not apply solvent-based or other sealing compounds which could damage PVDF
- Avoid stress when installing and large changes in temperature

d (mm)	NPT (inch)	Part No.	USD	weight (kg)	L (mm)	s (mm)	z (mm)
16	¾	735 914 205	22.38	0.016	29	27	3
20	½	735 914 206	29.43	0.030	34	32	5
25	¾	735 914 207	31.81	0.036	38	36	6
32	1	735 914 208	50.57	0.067	43	46	7
40	1 ¼	735 914 209	74.09	0.100	47	55	7
50	1 ½	735 914 210	96.48	0.140	54	65	9
63	2	735 914 211	119.17	0.220	62	80	9

A



Hose Adapter, PN 16, PVDF-Standard, Socket Fusion

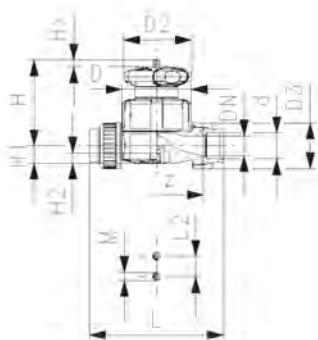
Model:

- Material: PVDF
- With socket fusion spigot (metric) and parallel hose connection

d - d1 (mm)	Part No.	USD weight (kg)	L (mm)	L1 (mm)	L2 (mm)	
20 - 20	* 735 960 406	61.14	0.018	78	27	14
25 - 25	* 735 960 407	68.19	0.028	91	36	16
32 - 32	* 735 960 408	78.86	0.050	100	36	18
40 - 40	^ 735 960 409	109.84	0.078	104	42	20
63 - 60	* 735 960 411	167.88	0.126	100	50	27

Manual Valves

A



Type 514 Diaphragm Valve SYGEF Standard PVDF Fusion sockets metric

Model:

- Material: PVDF
- Double flow rate compared to predecessor
- One housing nut replaces four screws
- Handwheel with built-in locking mechanism
- For easy installation and removal
- Short overall length

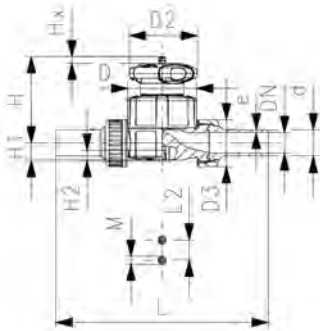
Option:

- Self adjusting multifunctional module with integrated limit switches

d (mm)	PTFE/EPDM Part No.	USD	weight (lb)
20	185 514 032	491.00	0.789
25	185 514 033	523.00	1.204
32	185 514 034	607.00	2.136
40	185 514 035	830.00	3.710
50	185 514 036	1,002.00	6.464
63	185 514 037	1,313.00	6.603

d (mm)	D (mm)	D2 (mm)	D3 (mm)	L (mm)	L2 (mm)	H (mm)	H1 (mm)	H2 (mm)	M	z (mm)	Lift = Hx (mm)	closest inch (inch)
20	65	65	43	128	25	73	14	12	M6	100	7	½
25	80	65	53	150	25	81	18	12	M6	118	10	¾
32	88	87	60	162	25	107	22	12	M6	126	13	1
40	101	87	74	184	45	115	26	15	M8	144	15	1 ¼
50	117	135	82	210	45	148	32	15	M8	164	19	1 ½
63	144	135	100	248	45	166	39	15	M8	194	25	2

A



Type 514 Diaphragm Valve SYGEF Standard PVDF
Butt fusion spigots metric

Model:

- Material: PVDF
- Double flow rate compared to predecessor
- One housing nut replaces four screws
- Handwheel with built-in locking mechanism
- For easy installation and removal
- Short overall length

Option:

- Individual configuration of the valve (see diagram)
- Self adjusting multifunctional module with integrated limit switches

d (mm)	PTFE/EPDM Part No.	USD	weight (lb)
20	185 514 132	491.00	0.840
25	185 514 133	523.00	1.224
32	185 514 134	607.00	2.310
40	185 514 135	830.00	3.089
50	185 514 136	1,002.00	4.489
63	185 514 137	1,313.00	7.485

d (mm)	D (mm)	D2 (mm)	D3 (mm)	L (mm)	L2 (mm)	H (mm)	H1 (mm)	H2 (mm)	M	Lift = Hx (mm)	e (mm)	closest inch (inch)
20	65	65	43	196	25	73	14	12	M6	7	1.9	½
25	80	65	53	221	25	81	18	12	M6	10	1.9	¾
32	88	87	60	234	25	107	22	12	M6	13	2.4	1
40	101	87	74	260	45	115	26	15	M8	15	2.4	1 ¼
50	117	135	82	284	45	148	32	15	M8	19	3.0	1 ½
63	144	135	100	321	45	166	39	15	M8	25	3.0	2

A



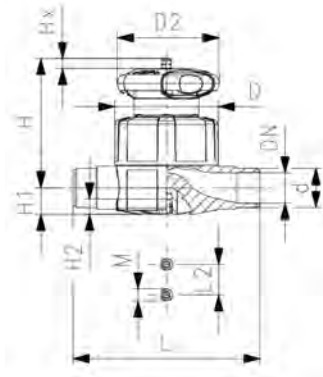
Type 515 Diaphragm Valve SYGEF Standard PVDF
Socket fusion spigot metric

Model:

- Material: PVDF
- Double flow rate compared to predecessor
- One housing nut replaces four screws
- Handwheel with built-in locking mechanism
- EPDM version is PN 10 pressure rated. PTFE/EPDM version is PN 6 pressure rated.

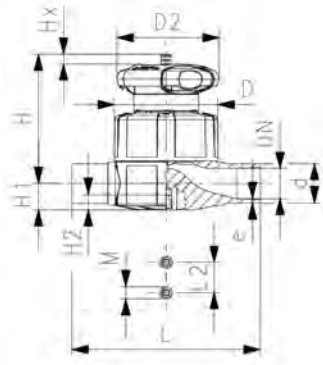
Option:

- Individual configuration of the valve (see diagram)
- Self adjusting multifunctional module with integrated limit switches



d (mm)	PTFE/EPDM Part No.	USD	D (mm)	D2 (mm)	L (mm)	L2 (mm)	H (mm)	H1 (mm)	H2 (mm)	M	Lift = Hx (mm)	closest inch (inch)
20	185 515 032	365.80	65	65	124	25	73	14	12	M6	7	½
25	185 515 033	398.96	80	65	144	25	81	18	12	M6	10	¾
32	185 515 034	453.89	88	87	154	25	107	22	12	M6	13	1
40	185 515 035	623.83	101	87	174	45	115	26	15	M8	15	1 ¼
50	185 515 036	756.48	117	135	194	45	148	32	15	M8	19	1 ½
63	185 515 037	990.67	144	135	223	45	166	39	15	M8	25	2

A



Type 515 Diaphragm Valve SYGEF Standard PVDF
Butt fusion spigots metric

Model:

- Material: PVDF
- Double flow rate compared to predecessor
- One housing nut replaces four screws
- Handwheel with built-in locking mechanism
- EPDM version is PN 10 pressure rated. PTFE/EPDM version is PN 6 pressure rated.

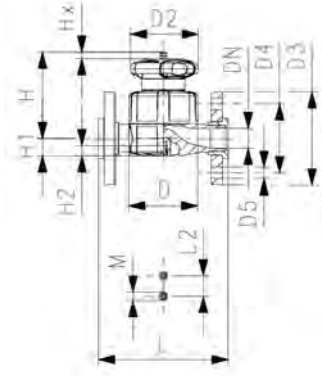
Option:

- Individual configuration of the valve (see diagram)
- Self adjusting multifunctional module with integrated limit switches

d (mm)	PTFE/EPDM Part No.	USD	weight (lb)
20	185 515 132	364.00	0.617
25	185 515 133	397.00	1.133
32	185 515 134	452.00	1.493
40	185 515 135	623.00	2.077
50	185 515 136	753.00	5.494
63	185 515 137	987.00	5.434

d (mm)	D (mm)	D2 (mm)	L (mm)	L2 (mm)	H (mm)	H1 (mm)	H2 (mm)	M	Lift = Hx (mm)	e (mm)	closest inch (inch)
20	65	65	124	25	73	14	12	M6	7	1.9	½
25	80	65	144	25	81	18	12	M6	10	1.9	¾
32	88	87	155	25	107	22	12	M6	13	2.4	1
40	101	87	176	45	115	26	15	M8	15	2.4	1 ¼
50	117	135	193	45	148	32	15	M8	19	3.0	1 ½
63	144	135	223	45	166	39	15	M8	25	3.0	2

A



Type 517 Diaphragm Valve SYGEF Standard PVDF ANSI Flanged

Model:

- Material: PVDF
- Double flow rate compared to predecessor
- One housing nut replaces four screws
- Handwheel with built-in locking mechanism
- Joining faces flat/serrated
- Joining face serrated
- EPDM version is PN 10 pressure rated. PTFE/EPDM version is PN 6 pressure rated.
- Connecting dimension: ANSI/ASME B 16.5 class 150, ASTM D 4024, BS 1560, BS EN 1759

Option:

- Individual configuration of the valve (see diagram)
- Self adjusting multifunctional module with integrated limit switches

Size (inch)	PTFE/EPDM Part No.	USD
½	185 517 732	435.00
¾	185 517 733	482.00
1	185 517 734	554.00
1 ¼	185 517 735	746.00
1 ½	185 517 736	901.00
2	185 517 737	1,188.00

Size (inch)	D (mm)	D2 (mm)	D3 (mm)	D4 (mm)	D5 (mm)	L (mm)	L2 (mm)	H (mm)	H1 (mm)	H2 (mm)	M	Lift = Hx (mm)
½	65	65	95	60	16	130	25	73	14	12	M6	7
¾	80	65	105	70	16	150	25	81	18	12	M6	10
1	88	87	115	79	16	160	25	107	22	12	M6	13
1 ¼	101	87	140	89	16	180	45	115	26	15	M8	15
1 ½	117	135	150	98	16	200	45	148	32	15	M8	19
2	144	135	165	121	19	230	45	166	39	15	M8	25

A



Type 317 Diaphragm Valve
SYGEF Standard PVDF
Flanged

Model:

- Material: PVDF
- Overall length according to EN 558
- Diaphragm, PTFE with EPDM backing diaphragm (FDA compliant)

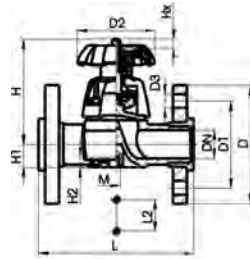
Option:

- Handwheel with built-in locking mechanism (standard version is nonlockable)

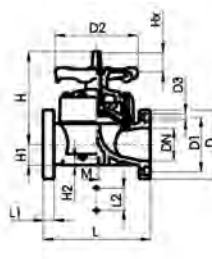
* **3# and 6 # fixed flanges metric and Inch ANSI B16.5**

d (mm)	Size (inch)	PTFE with EPDM supp. diaphragm Part No.	USD	weight (lb)
75	2 ½	175 317 538	2,067.00	12.606
90	3	175 317 009	3,911.00	23.722
110	4	175 317 340	6,083.00	33.964
160	6	175 317 012	10,697.00	69.446

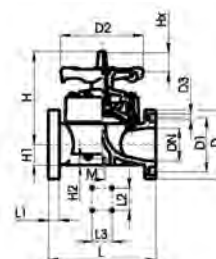
d (mm)	D (mm)	D1 (mm)	D2 (mm)	D3 (mm)	H (mm)	H1 (mm)	H2 (mm)	Lift = Hx (mm)	L (mm)	L1 (mm)	L2 (mm)	L3 (mm)	M	AL
75	185	140	152	18	201	46	15	30	290		70		M8	4
90	200	160	270	18	265	57	23	40	310	35	120		M12	8
110	225	191	270	19	304	69	23	50	350	35	120		M12	8
160	285	240	400	22	437	108	23	70	480	26	100	200	M12	8



DN 15-65



DN 80-100

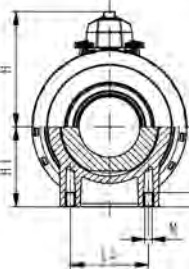
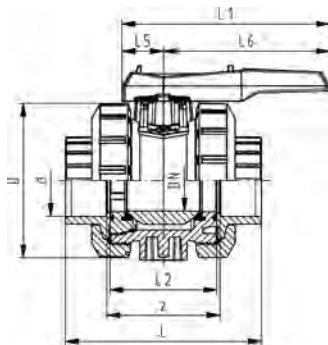
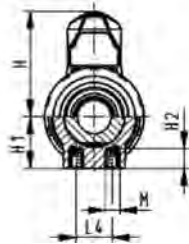
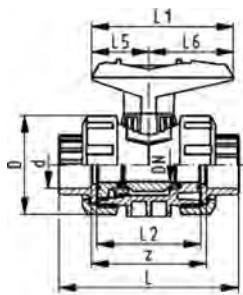


DN 150

A



DN10/15 - 50



**Type 546 Ball Valve SYGEF Standard PVDF
With mounting inserts
With fusion sockets metric**

Model:

- Valve end and union nut are **not compatible** with Type 346 (DN10/15-50) and Type 370 (DN65-100)

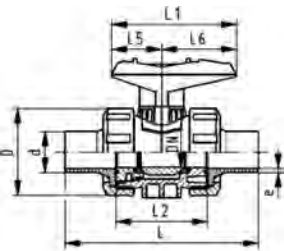
d (mm)	FKM Part No.	USD	weight (lb)
16	175 546 411	232.00	0.430
20	175 546 412	248.00	0.434
25	175 546 413	305.00	0.666
32	175 546 414	401.00	0.950
40	175 546 415	512.00	1.676
50	175 546 416	752.00	2.229
63	175 546 417	1,040.00	4.092
75	175 546 418	2,862.00	13.889
90	175 546 419	3,562.00	20.944
110	175 546 420	4,276.00	33.069

d (mm)	D (mm)	H (mm)	H1 (mm)	H2 (mm)	L (mm)	L1 (mm)	L2 (mm)	L4 (mm)	L5 (mm)	L6 (mm)	M	z (mm)	closest inch (inch)
16	50	79	27	12	93	77	56	25	32	45	M6	67	3/8
20	50	57	27	12	95	77	56	25	32	45	M6	66	1/2
25	58	67	30	12	109	97	65	25	39	58	M6	77	3/4
32	68	73	36	12	119	97	71	25	39	58	M6	83	1
40	84	90	44	15	135	128	85	45	54	74	M8	99	1 1/4
50	97	97	51	15	147	128	89	45	54	74	M8	105	1 1/2
63	124	116	64	15	168	152	101	45	66	87	M8	117	2
75	166	149	85	15	233	270	136	70	64	206	M8	167	2 1/2
90	200	161	105	15	254	270	141	70	64	206	M8	180	3
110	238	178	123	22	301	320	164	120	64	256	M12	215	4

A



DN10/15 - 50



**Type 546 Ball Valve Standard PVDF
With mounting inserts
With butt fusion spigots metric**

Model:

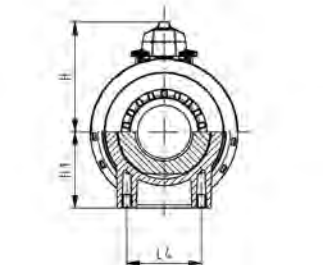
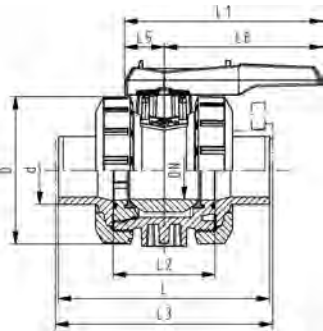
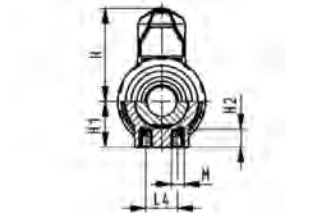
- Material: PVDF
- For easy installation and removal
- Ball seals PTFE
- Integrated stainless steel mounting inserts
- Valve end and union nut are **not compatible** with Type 346 (DN10/15-50) and Type 370 (DN65-100)

Option:

- Individual configuration of the valve (see diagram)
- Multifunctional module with integrated limit switches
- Pneumatic or electric actuators from GF

d (mm)	FKM Part No.	USD	weight (lb)
20	175 546 272	294.00	0.443
25	175 546 273	353.00	0.664
32	175 546 274	466.00	0.966
40	175 546 275	626.00	1.720
50	175 546 276	849.00	2.447
63	175 546 277	1,185.00	4.317
75	175 546 278	2,862.00	16.755
90	175 546 279	3,562.00	16.440
110	175 546 280	4,276.00	38.360

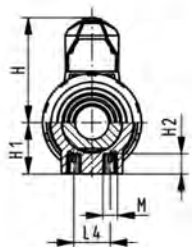
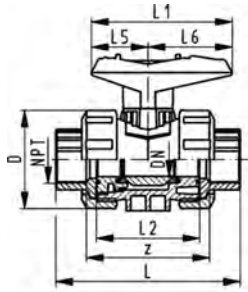
d (mm)	D (mm)	H (mm)	H1 (mm)	H2 (mm)	L (mm)	L1 (mm)	L2 (mm)	L4 (mm)	L5 (mm)	L6 (mm)	M	e (mm)	closest inch (inch)
20	50	57	27	12	130	77	56	25	32	45	M6	1.9	1/2
25	58	67	30	12	143	97	65	25	39	58	M6	1.9	3/4
32	68	73	36	12	150	97	71	25	39	58	M6	2.4	1
40	84	90	44	15	171	128	85	45	54	74	M8	2.4	1 1/4
50	97	97	51	15	191	128	89	45	54	74	M8	3.0	1 1/2
63	124	116	64	15	220	152	101	45	66	87	M8	3.0	2
75	166	149	85	15	266	270	136	70	64	206	M8	3.6	2 1/2
90	200	161	105	15	264	270	141	70	64	206	M8	4.3	3
110	238	178	123	22	301	320	164	120	64	256	M12	5.3	4



A



DN10/15 - 50



Type 546 Ball Valve Standard PVDF
With mounting inserts
With threaded sockets NPT

NPT (inch)	FKM Part No.	USD	weight (lb)
3/8	175 546 331	288.00	0.452
1/2	175 546 332	305.00	0.452
3/4	175 546 333	360.00	0.717
1	175 546 334	466.00	1.080
1 1/4	175 546 335	626.00	1.808
1 1/2	175 546 336	819.00	2.502
2	175 546 337	1,136.00	4.740

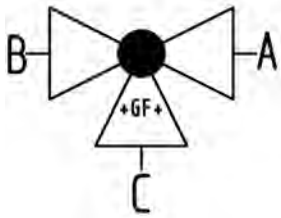
NPT (inch)	D (mm)	H (mm)	H1 (mm)	H2 (mm)	L (mm)	L1 (mm)	L2 (mm)	L4 (mm)	L5 (mm)	L6 (mm)	M	z (mm)
3/8	50	57	27	12	96	77	56	25	32	45	M6	69
1/2	50	57	27	12	99	77	56	25	32	45	M6	64
3/4	58	67	30	12	111	97	65	25	39	58	M6	76
1	68	73	36	12	127	97	71	25	39	58	M6	83
1 1/4	84	90	44	15	146	128	85	45	54	74	M8	101
1 1/2	97	97	51	15	157	128	89	45	54	74	M8	111
2	124	116	64	15	183	152	101	45	66	87	M8	135

A

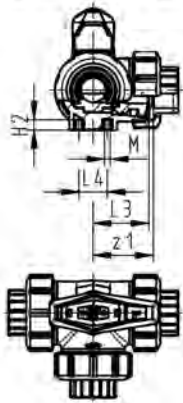
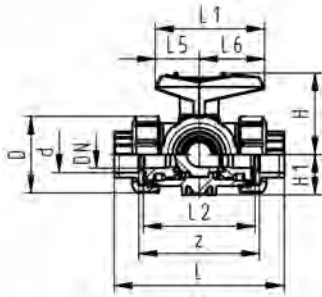


Type 543 3-Way Ball Valve
Horizontal/L-port, Standard PVDF
With fusion sockets metric

d (mm)	FKM Part No.	USD	weight (lb)
16	175 543 011	441.00	0.619
20	175 543 012	466.00	0.639
25	175 543 013	562.00	1.016
32	175 543 014	735.00	1.442
40	175 543 015	857.00	2.643
50	175 543 016	1,121.00	3.631
63	175 543 017	1,569.00	7.114



d (mm)	D (mm)	L (mm)	L1 (mm)	L2 (mm)	L3 (mm)	L4 (mm)	L5 (mm)	L6 (mm)	H (mm)	H1 (mm)	H2 (mm)	M (mm)	z (mm)	z1 (mm)	closest inch (inch)
16	50	110	77	72	36	25	32	45	57	28	8	6	82	41	3/8
20	50	112	77	72	36	25	32	45	57	28	8	6	82	41	1/2
25	58	129	97	85	43	25	39	58	67	32	8	6	97	49	3/4
32	68	146	97	98	49	25	39	58	73	36	8	6	110	55	1
40	84	170	128	118	59	45	54	74	90	45	9	8	132	66	1 1/4
50	97	193	128	135	68	45	54	74	97	51	9	8	151	76	1 1/2
63	124	244	152	176	88	45	66	87	116	65	9	8	188	94	2

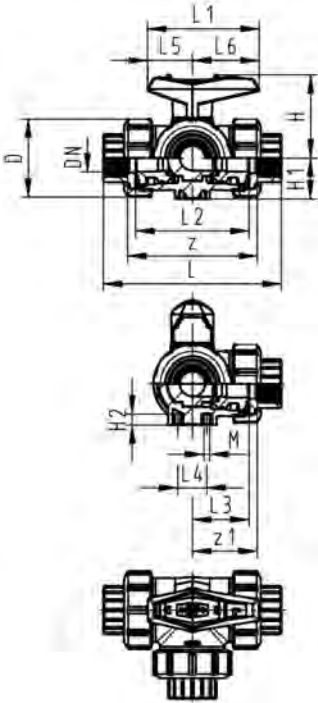


A

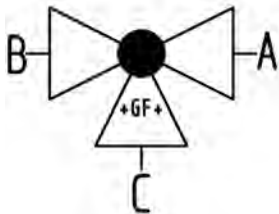


Type 543 3-Way Ball Valve
Horizontal/L-port, Standard PVDF
With threaded sockets NPT

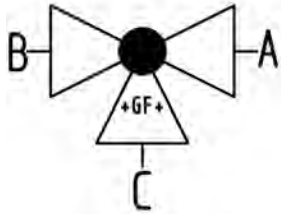
NPT (inch)	FKM Part No.	USD	weight (lb)
3/8	175 543 071	498.00	0.688
1/2	175 543 072	512.00	0.705
3/4	175 543 073	626.00	1.016
1	175 543 074	819.00	1.552
1 1/4	175 543 075	996.00	2.643
1 1/2	175 543 076	1,313.00	3.920
2	175 543 077	1,712.00	7.632



NPT (inch)	D (mm)	L (mm)	L1 (mm)	L2 (mm)	L3 (mm)	L4 (mm)	L5 (mm)	L6 (mm)	H (mm)	H1 (mm)	H2 (mm)	M (mm)	z (mm)	z1 (mm)
3/8	50	112	77	72	36	25	32	45	57	28	8	6	86	43
1/2	50	114	77	72	36	25	32	45	57	28	8	6	80	40
3/4	58	131	97	85	43	25	39	58	67	32	8	6	95	48
1	68	154	97	98	49	25	39	58	73	36	8	6	110	55
1 1/4	84	180	128	118	59	45	54	74	90	45	9	8	132	66
1 1/2	97	203	128	135	68	45	54	74	97	51	9	8	157	79
2	124	258	152	176	88	45	66	87	116	65	9	8	210	105



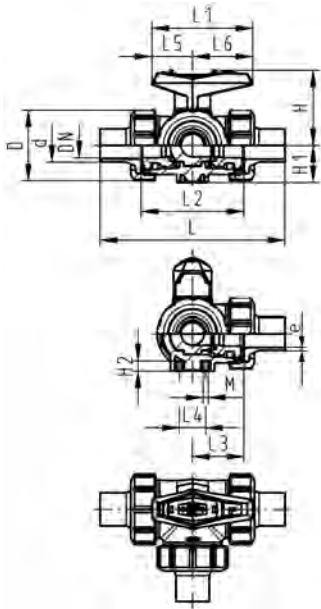
A



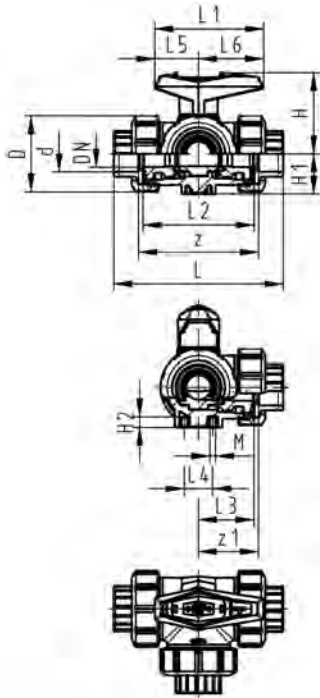
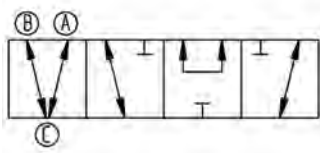
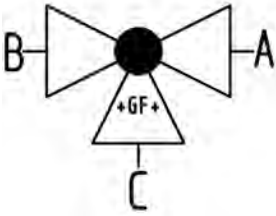
Type 543 3-Way Ball Valve
Horizontal/L-port, Standard PVDF
With butt fusion spigots IR-Plus metric

d (mm)	FKM Part No.	USD	weight (lb)
20	175 543 052	512.00	0.732
25	175 543 053	626.00	1.058
32	175 543 054	819.00	1.620
40	175 543 055	996.00	2.703
50	175 543 056	1,313.00	4.098
63	175 543 057	1,712.00	7.430

d (mm)	D (mm)	L (mm)	L1 (mm)	L2 (mm)	L3 (mm)	L4 (mm)	L5 (mm)	L6 (mm)	H (mm)	H1 (mm)	H2 (mm)	M (mm)	e (mm)	closest inch (inch)
20	50	146	77	72	36	25	32	45	57	28	8	6	1.9	1/2
25	58	163	97	85	43	25	39	58	67	32	8	6	1.9	3/4
32	68	178	97	98	49	25	39	58	73	36	8	6	2.4	1
40	84	204	128	118	59	45	54	74	90	45	9	8	2.4	1 1/4
50	97	237	128	135	68	45	54	74	97	51	9	8	3.0	1 1/2
63	124	296	152	176	88	45	66	87	116	65	9	8	3.0	2



A



Type 543 3-Way Ball Valve
Horizontal/T-port, SYGEG Standard
With fusion sockets metric

d (mm)	FKM Part No.	USD	weight (lb)
16	175 543 111	441.00	0.624
20	175 543 112	466.00	0.635
25	175 543 113	562.00	0.919
32	175 543 114	735.00	1.420
40	175 543 115	857.00	2.612
50	175 543 116	1,121.00	3.556
63	175 543 117	1,569.00	7.507

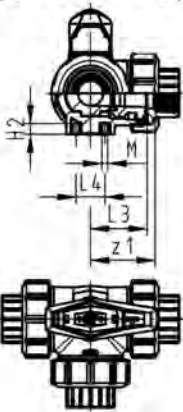
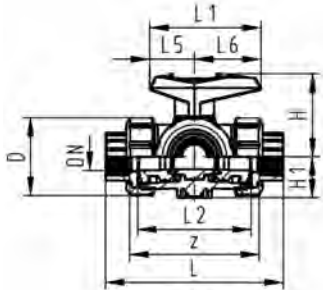
d (mm)	D (mm)	L (mm)	L1 (mm)	L2 (mm)	L3 (mm)	L4 (mm)	L5 (mm)	L6 (mm)	H (mm)	H1 (mm)	H2 (mm)	M	z (mm)	z1 (mm)	closest inch (inch)
16	50	110	77	72	36	25	32	45	57	28	8	6	82	41	3/8
20	50	112	77	72	36	25	32	45	57	28	8	6	82	41	1/2
25	58	129	97	85	43	25	39	58	67	32	8	6	97	49	3/4
32	68	146	97	98	49	25	39	58	73	36	8	6	110	55	1
40	84	170	128	118	59	45	54	74	90	45	9	8	132	66	1 1/4
50	97	193	128	135	68	45	54	74	97	51	9	8	151	76	1 1/2
63	124	244	152	176	88	45	66	87	116	65	9	8	188	94	2

A

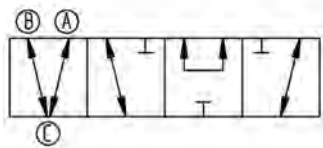
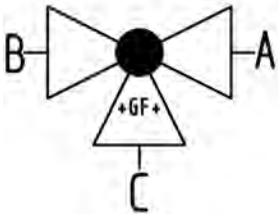


Type 543 3-Way Ball Valve
Horizontal/T-port, SYGEF Standard
With threaded sockets NPT

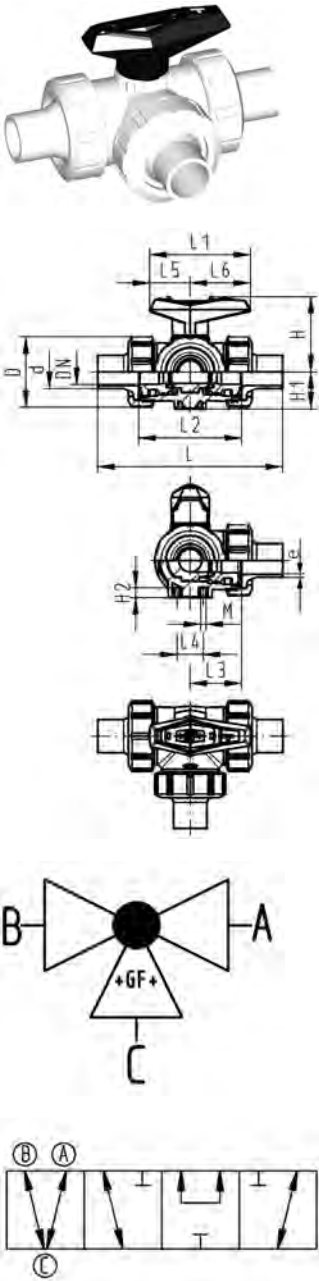
NPT (inch)	FKM Part No.	USD
3/8	175 543 171	498.00
1/2	175 543 172	512.00
3/4	175 543 173	626.00
1	175 543 174	819.00
1 1/4	175 543 175	996.00
1 1/2	175 543 176	1,313.00
2	175 543 177	1,712.00



NPT (inch)	D (mm)	H (mm)	H1 (mm)	H2 (mm)	L (mm)	L1 (mm)	L2 (mm)	L3 (mm)	L4 (mm)	L5 (mm)	L6 (mm)	M (mm)	z (mm)	z1 (mm)
3/8	50	57	28	8	112	77	72	36	25	32	45	6	86	43
1/2	50	57	28	8	114	77	72	36	25	32	45	6	80	40
3/4	58	67	32	8	131	97	85	43	25	39	58	6	95	48
1	68	73	36	8	154	97	98	49	25	39	58	6	110	55
1 1/4	84	90	45	9	180	128	118	59	45	54	74	6	132	66
1 1/2	97	97	51	9	203	128	135	68	45	54	74	6	157	79
2	124	116	65	9	258	152	176	88	45	66	87	6	210	105



A



Type 543 3-Way Ball Valve
Horizontal/T-port, Standard PVDF
With butt fusion spigots IR-Plus metric

d (mm)	FKM Part No.	USD	weight (lb)
20	175 543 152	512.00	0.708
25	175 543 153	626.00	1.054
32	175 543 154	819.00	1.444
40	175 543 155	996.00	2.672
50	175 543 156	1,313.00	4.039
63	175 543 157	1,712.00	7.862

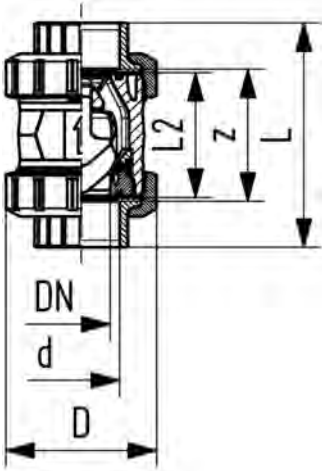
d (mm)	D (mm)	L (mm)	L1 (mm)	L2 (mm)	L3 (mm)	L4 (mm)	L5 (mm)	L6 (mm)	H (mm)	H1 (mm)	H2 (mm)	M (mm)	e (mm)	closest inch (inch)
20	50	146	77	72	36	25	32	45	57	28	8	6	1.9	3/4
25	58	163	97	85	43	25	39	58	67	32	8	6	1.9	3/4
32	68	178	97	98	49	25	39	58	73	36	8	6	2.4	1
40	84	204	128	118	59	45	54	74	90	45	9	8	2.4	1 1/4
50	97	237	128	135	68	45	54	74	97	51	9	8	3.0	1 1/2
63	124	296	152	176	88	45	66	87	116	65	9	8	3.0	2

A



**Check valve type 561 SYGEF Standard
With fusion sockets metric**

d (mm)	FKM Part No.	USD	weight (lb)	D (mm)	L (mm)	L2 (mm)	z (mm)	closest inch (inch)
16	^ 175 561 011	416.00	0.353	50	93	56	67	¾
20	^ 175 561 012	420.00	0.353	50	95	56	66	½
25	^ 175 561 013	519.00	0.750	58	109	65	77	¾
32	^ 175 561 014	607.00	0.794	68	119	71	83	1
40	^ 175 561 015	1,002.00	1.477	84	135	85	99	1 ¼
50	^ 175 561 016	1,083.00	2.183	97	147	89	105	1 ½
63	^ 175 561 017	1,816.00	3.902	124	168	101	117	2
75	^ 175 561 018	4,205.00	8.003	166	233	136	167	2 ½
90	^ 175 561 019	5,258.00	12.787	200	254	141	180	3
110	^ 175 561 020	6,310.00	20.834	238	301	164	215	4

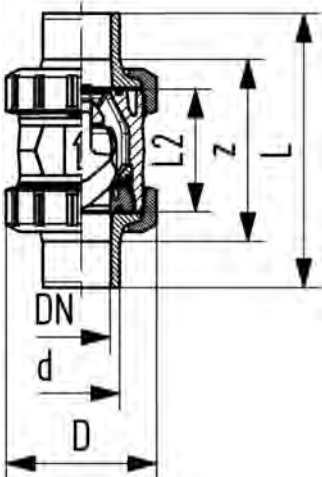


A

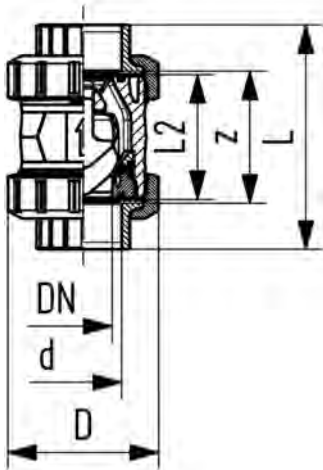


**Check valve type 561 SYGEF Standard
With butt fusion spigots IR-Plus metric**

d (mm)	FKM Part No.	USD	weight (lb)	D (mm)	L (mm)	L2 (mm)	e (mm)	closest inch (inch)
20	^ 175 561 092	476.00	0.353	50	130	56	1.9	½
25	^ 175 561 093	574.00	0.772	58	143	65	1.9	¾
32	^ 175 561 094	662.00	0.838	68	150	71	2.4	1
40	^ 175 561 095	1,105.00	1.455	84	171	85	2.4	1 ¼
50	^ 175 561 096	1,179.00	2.205	97	191	89	3.0	1 ½
63	^ 175 561 097	1,953.00	3.946	124	220	101	3.0	2



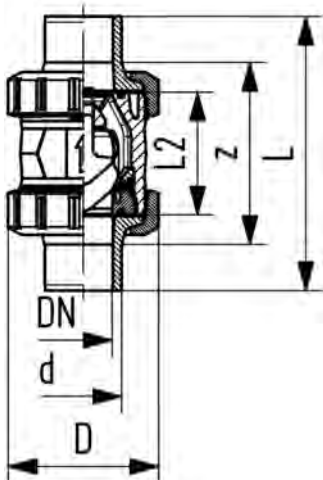
A



Check valve type 561
SYGEF Standard silicone free
With fusion sockets metric

d (mm)	FKM Part No.	USD	D (mm)	L (mm)	L2 (mm)	z (mm)	closest inch (inch)
16	^ 175 561 211	490.00	50	93	56	67	3/8
20	^ 175 561 212	499.00	50	95	56	66	1/2
25	^ 175 561 213	619.00	58	109	65	77	3/4
32	^ 175 561 214	717.00	68	119	71	83	1
40	^ 175 561 215	1,173.00	84	135	85	99	1 1/4
50	^ 175 561 216	1,280.00	97	147	89	105	1 1/2
63	^ 175 561 217	2,153.00	124	168	101	117	2
75	^ 175 561 218	4,890.00	166	235	136	167	2 1/2
90	^ 175 561 219	6,114.00	200	255	141	180	3
110	^ 175 561 220	7,336.00	238	305	164	215	4

A



Check valve type 561
SYGEF Standard silicone free
With butt fusion spigots IR-Plus metric

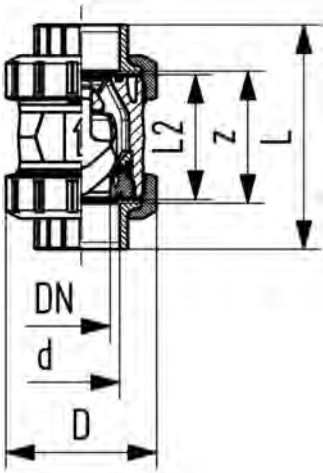
d (mm)	FKM Part No.	USD	D (mm)	L (mm)	L2 (mm)	e (mm)	closest inch (inch)
20	^ 175 561 272	562.00	50	130	56	1.9	1/2
25	^ 175 561 273	669.00	58	143	65	1.9	3/4
32	^ 175 561 274	783.00	68	150	71	2.4	1
40	^ 175 561 275	1,303.00	84	171	85	2.4	1 1/4
50	^ 175 561 276	1,387.00	97	191	89	3.0	1 1/2
63	^ 175 561 277	2,279.00	124	220	101	3.0	2
75	^ 175 561 278	4,507.00	166	290	136	3.6	2 1/2
90	^ 175 561 279	5,635.00	200	310	141	4.3	3
110	^ 175 561 280	6,759.00	238	350	164	5.3	4

A



**Check valve type 562 SYGEF Standard
With fusion sockets metric**

d (mm)	FKM Part No.	USD weight (lb)	D (mm)	L (mm)	L2 (mm)	z (mm)	closest inch (inch)
16	^ 175 562 011	482.00	50	93	56	67	¾
20	^ 175 562 012	486.00	50	95	56	66	½
25	^ 175 562 013	598.00	58	109	65	77	¾
32	^ 175 562 014	702.00	68	119	71	83	1
40	^ 175 562 015	1,145.00	84	135	85	99	1 ¼
50	^ 175 562 016	1,239.00	97	147	89	105	1 ½
63	^ 175 562 017	2,083.00	124	168	101	117	2

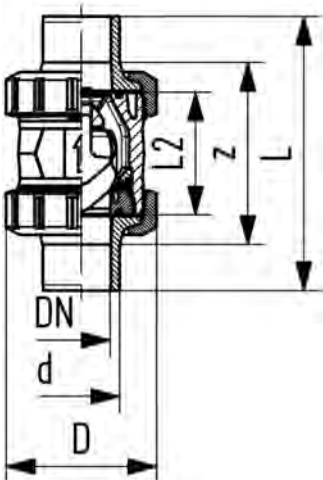


A



**Check valve type 562 SYGEF Standard
With butt fusion spigots IR-Plus metric**

d (mm)	FKM Part No.	USD weight (lb)	D (mm)	L (mm)	L2 (mm)	e (mm)	closest inch (inch)
20	^ 175 562 092	546.00	50	130	56	1.9	½
25	^ 175 562 093	671.00	58	143	65	1.9	¾
32	^ 175 562 094	787.00	68	150	71	2.4	1
40	^ 175 562 095	1,287.00	84	171	85	2.4	1 ¼
50	^ 175 562 096	1,392.00	97	191	89	3.0	1 ½
63	^ 175 562 097	2,337.00	124	220	101	3.0	2



A

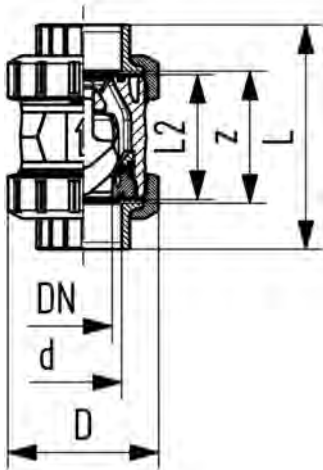


Check valve type 562 SYGEF Standard
silicone free
With fusion sockets metric

Model:

- Material: PVDF / silicone free cleaned
- For horizontal or vertical installation
- Sealing at a minimum water column of 1m
- Spring loaded, spring made of stainless steel (1.4310)
- Spring available in other materials, see spare parts
- Designed for easy installation and removal
- Vibration free even at high flow velocity
- Flow-optimized return cone, double guided
- Compact installation length, same as ball valve type 546

Warning: please make sure the diameter is not reduced through welding beads (Danger of turbulences)



d (mm)	FKM Part No.	USD	weight (kg)	D (mm)	L (mm)	L2 (mm)	z (mm)	closest inch (inch)
16	^ 175 562 211	574.00	0.160	50	93	56	67	¾
20	^ 175 562 212	619.00	0.160	50	95	56	66	½
25	^ 175 562 213	714.00	0.340	58	109	65	77	¾
32	^ 175 562 214	834.00	0.360	68	119	71	83	1
40	^ 175 562 215	1,369.00	0.670	84	135	85	99	1 ¼
50	^ 175 562 216	1,481.00	0.990	97	147	89	105	1 ½
63	^ 175 562 217	2,491.00	1.770	124	168	101	117	2
75	^ 175 562 218	5,032.00	3.630	166	235	136	167	2 ½
90	^ 175 562 219	6,288.00	5.800	200	255	141	180	3
110	^ 175 562 220	7,544.00	9.450	238	305	164	215	4

A

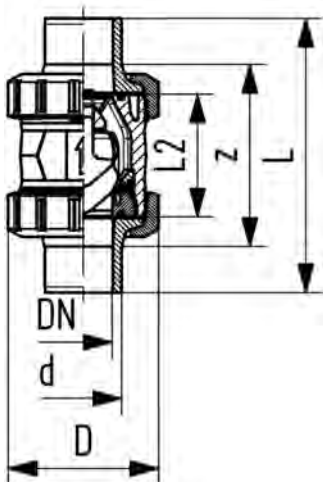


Check valve type 562 SYGEF Standard
silicone free
With butt fusion spigots IR-Plus metric

Model:

- Material: PVDF / silicone free cleaned
- For horizontal or vertical installation
- Sealing at a minimum water column of 1m
- Spring loaded, spring made of stainless steel (1.4310)
- Spring available in other materials, see spare parts
- Designed for easy installation and removal
- Vibration free even at high flow velocity
- Flow-optimized return cone, double guided
- Compact installation length, same as ball valve type 546

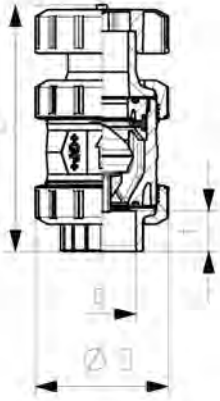
Warning: please make sure the diameter is not reduced through welding beads (Danger of turbulences)



d (mm)	FKM Part No.	USD	weight (kg)	D (mm)	L (mm)	L2 (mm)	e (mm)	closest inch (inch)
20	^ 175 562 272	654.00	0.160	50	130	56	1.9	½
25	^ 175 562 273	805.00	0.350	58	143	65	1.9	¾
32	^ 175 562 274	943.00	0.380	68	150	71	2.4	1
40	^ 175 562 275	1,546.00	0.660	84	171	85	2.4	1 ¼
50	^ 175 562 276	1,670.00	1.000	97	191	89	3.0	1 ½
63	^ 175 562 277	2,809.00	1.790	124	220	101	3.0	2
75	^ 175 562 278	5,674.00	3.680	166	290	136	3.6	2 ½
90	^ 175 562 279	7,093.00	5.760	200	310	141	4.3	3
110	^ 175 562 280	8,509.00	9.270	238	350	164	5.3	4

A

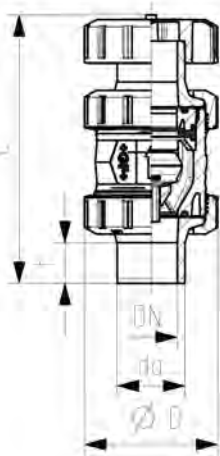
**Type 591 SYGEF Standard
Ventilating and bleed valve
With fusion sockets metric**



d (mm)	FKM Part No.	USD	weight (kg)	D (mm)	L (mm)	t (mm)	closest inch (inch)
16	^ 175 591 011	582.00	0.177	50	126	14	3/8
20	^ 175 591 012	589.00	0.177	50	127	15	1/2
25	^ 175 591 013	723.00	0.363	58	142	16	3/4
32	^ 175 591 014	851.00	0.394	68	153	18	1
40	^ 175 591 015	1,401.00	0.722	84	171	19	1 1/4
50	^ 175 591 016	1,513.00	1.059	97	190	21	1 1/2
63	^ 175 591 017	2,551.00	1.876	124	219	26	2
75	* 175 591 018	5,105.00	3.630	166	256	33	2 1/2
90	* 175 591 019	6,380.00	5.800	200	275	37	3
110	* 175 591 020	7,654.00	9.450	238	318	43	4

A

**Type 591 SYGEF Standard
Ventilating and bleed valve
With socket fusion spigots metric**



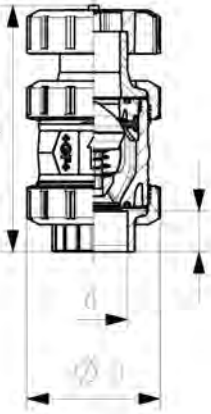
d (mm)	FKM Part No.	USD	weight (lb)	D (mm)	L (mm)	t (mm)	closest inch (inch)
16	^ 175 591 031	582.00	0.390	50	135	13	3/8
20	^ 175 591 032	589.00	0.412	50	140	14	1/2
25	^ 175 591 033	723.00	0.866	58	157	16	3/4
32	^ 175 591 034	851.00	0.957	68	168	18	1
40	^ 175 591 035	1,401.00	1.592	84	189	20	1 1/4
50	^ 175 591 036	1,513.00	2.423	97	211	23	1 1/2
63	^ 175 591 037	2,551.00	4.268	124	245	27	2

A

Ventilating valve type 595
SYGEF Standard
With fusion sockets metric



d (mm)	FKM Part No.	USD	weight (lb)	D (mm)	L (mm)	t (mm)	closest inch (inch)
16	^ 175 595 011	602.00	0.390	50	126	14	3/8
20	^ 175 595 012	609.00	0.390	50	127	15	1/2
25	^ 175 595 013	747.00	0.800	58	142	16	3/4
32	^ 175 595 014	876.00	0.869	68	153	18	1
40	^ 175 595 015	1,431.00	1.592	84	171	19	1 1/4
50	^ 175 595 016	1,549.00	2.335	97	190	21	1 1/2
63	^ 175 595 017	2,605.00	4.136	124	219	26	2
75	* 175 595 018	5,207.00	8.003	166	256	33	2 1/2
90	* 175 595 019	6,510.00	12.787	200	275	37	3
110	* 175 595 020	7,812.00	20.834	238	318	43	4

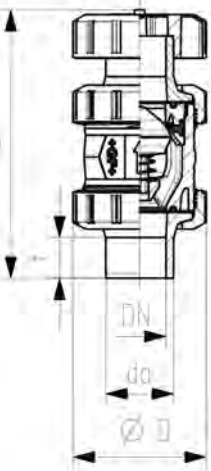


A

Ventilating valve type 595
SYGEF Standard
With socket fusion spigots metric



d (mm)	FKM Part No.	USD	weight (lb)	D (mm)	L (mm)	t (mm)	closest inch (inch)
16	^ 175 595 031	602.00	0.390	50	135	13	3/8
20	^ 175 595 032	609.00	0.412	50	140	14	1/2
25	^ 175 595 033	747.00	0.866	58	157	16	3/4
32	^ 175 595 034	876.00	0.957	68	168	18	1
40	^ 175 595 035	1,431.00	1.592	84	189	20	1 1/4
50	^ 175 595 036	1,549.00	2.423	97	211	23	1 1/2
63	^ 175 595 037	2,605.00	4.268	124	245	27	2



A



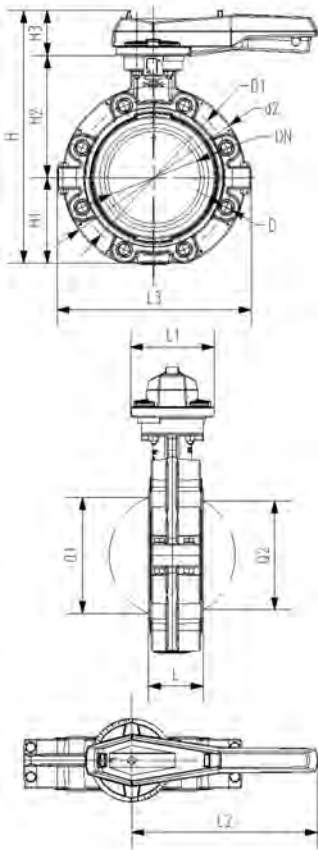
SYGEF Standard
Lugstyle butterfly valve 578 ANSI
Hand lever with ratchet settings

Model:

- Housing material: PP-GF30 with 316SS lug inserts
- Overall length according to EN 558, ISO 5752 (DN50 - 200 line 25, DN250 - 300 line 10)
- Connecting dimension: ANSI/ASME B 16.5 class 150, ASTM D 4024, BS 1560, BS EN 1759
- We recommend for the dimensions DN250 and DN300 only 6 bar maximum system pressure for the hand lever version

Option:

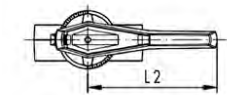
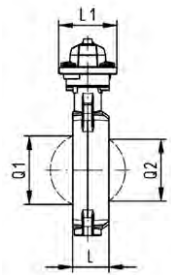
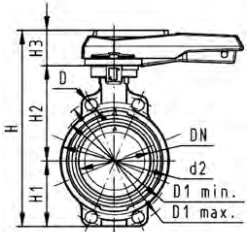
- Optional accessory: Integrated position feedback with limit switches (sold separately)



d	Size	DN	PN	Cv-value	FKM	USD	SP	weight
(mm)	(inch)	(mm)	(bar)	(l/min)	Part No.			(kg)
63	2	50	10	1470	175 578 102	1,557.00	1	1.800
75	2 ½	65	10	2200	175 578 103	2,164.00	1	1.895
90	3	80	10	3000	175 578 104	2,164.00	1	2.251
110	4	100	10	6500	175 578 105	2,503.00	1	3.146
140	5	125	10	11500	175 578 106	3,806.00	1	4.660
160	6	150	10	16600	175 578 107	3,806.00	1	6.430
225	8	200	10	39600	175 578 108	4,769.00	1	8.625
280	10	300	10	55200	175 578 109	8,529.00	1	19.528
315	12	250	10	80000	175 578 110	10,235.00	1	26.106

d	Size	d2	D	D1	H	H1	H2	H3	L	L1	L2	L3	Q1	Q2
(mm)	(inch)	(mm)		(mm)	(mm)	(mm)	(mm)	(mm)	(mm)	(mm)	(mm)	(mm)	(mm)	(mm)
63	2	160	UNC 5/8	120.6	265	77	134	54	45	106	205	165	40	
75	2 ½	180	UNC 5/8	139.7	277	83	140	54	46	106	205	182	54	35
90	3	195	UNC 5/8	152.4	289	89	146	54	49	106	205	210	67	50
110	4	226	UNC 5/8	190.5	328	106	167	55	56	106	255	240	88	74
140	5	258	UNC 3/4	215.9	357	121	181	55	64	106	255	272	113	97
160	6	284	UNC 3/4	241.3	377	133	189	55	72	106	255	300	139	123
225	8	341	UNC 3/4	298.4	436	159	210	67	73	140	408	360	178	169
280	10	412	UNC 7/8	362.0	536	205	264	67	114	140	408	440	210	207
315	12	482	UNC 7/8	431.8	586	234	285	67	115	140	408	510	256	253

A



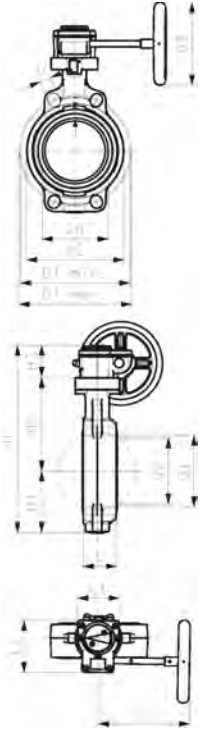
Type 567 Butterfly Valve SYGEF® Standard PVDF
Hand lever with ratchet settings

d (mm)	Size (inch)	FKM Part No.	USD	PTFE/FKM Part No.	USD	weight (kg)
63	2	175 567 002	1,056.00	* 175 567 202	1,224.00	1.080
75	2 ½	175 567 003	1,210.00	* 175 567 203	1,401.00	1.192
90	3	175 567 004	1,469.00	* 175 567 204	1,703.00	1.992
110	4	175 567 005	1,747.00	* 175 567 205	2,028.00	2.072
140	5	175 567 006	2,728.00	* 175 567 206	3,127.00	2.667
160	6	175 567 007	2,728.00	* 175 567 207	3,127.00	3.887
225	8	175 567 008	3,577.00	* 175 567 208	4,008.00	7.242
315	12	175 567 010	7,665.00	* 175 567 210	10,848.00	19.513

d (mm)	D (mm)	D1 min. (mm)	D1 max. (mm)	d2 (mm)	H (mm)	H1 (mm)	H2 (mm)	H3 (mm)	L (mm)	L1 (mm)	L2 (mm)	Q1 (mm)	Q2 (mm)
63	19	120	125	104	264	77	134	54	45	106	205	40	
75	19	140	145	115	277	83	140	54	46	106	205	54	35
90	19	150	160	131	289	89	146	54	49	106	205	67	50
110	19	175	191	161	325	104	167	55	56	106	255	88	74
140	23	210	216	187	352	117	181	55	64	106	255	113	97
160	24	241	241	215	373	130	189	55	72	106	255	139	123
225	23	290	295	267	435	158	210	67	73	140	408	178	169
315	25	400	432	379	598	228	285	85	113	149	408	256	253

A

Type 567 Butterfly Valve SYGEF® Standard PVDF
Reduction gear with handwheel



d (mm)	Size (inch)	FKM Part No.	USD	PTFE/FKM Part No.	USD	weight (lb)
63	2	175 567 022	1,450.00	* 175 567 222	1,625.00	6.874
75	2 ½	175 567 023	1,629.00	* 175 567 223	1,797.00	7.121
90	3	175 567 024	1,876.00	* 175 567 224	2,072.00	7.791
110	4	175 567 025	2,059.00	* 175 567 225	2,279.00	8.955
140	5	175 567 026	2,851.00	* 175 567 226	3,145.00	10.267
160	6	175 567 027	2,851.00	* 175 567 227	3,145.00	12.957
225	8	175 567 028	3,687.00	* 175 567 228	4,031.00	17.218
315	12	175 567 030	8,254.00	* 175 567 230	10,909.00	79.366

d (mm)	D (mm)	D1 min. (mm)	D1 max. (mm)	d2 (mm)	D3 (mm)	H (mm)	H1 (mm)	H2 (mm)	H3 (mm)	L (mm)	L1 (mm)	L2 (mm)	L3 (mm)	Q1 (mm)
63	19	120	125	104	160	273	77	134	62	45	78	112	179	40
75	19	140	145	115	160	285	83	140	62	46	78	112	179	54
90	19	150	160	131	160	297	89	146	62	49	78	112	179	67
110	19	175	191	160	160	333	104	167	62	56	78	112	179	88
140	23	210	216	187	160	360	117	181	62	64	78	112	179	113
160	24	241	241	215	160	381	130	189	62	72	78	112	179	139
225	23	290	295	267	160	430	158	210	62	73	78	112	179	178
315	25	400	432	379	200	605	228	285	69	113	97	130	198	256

d (mm)	Q2 (mm)
63	
75	35
90	50
110	74
140	97
160	123
225	169
315	253



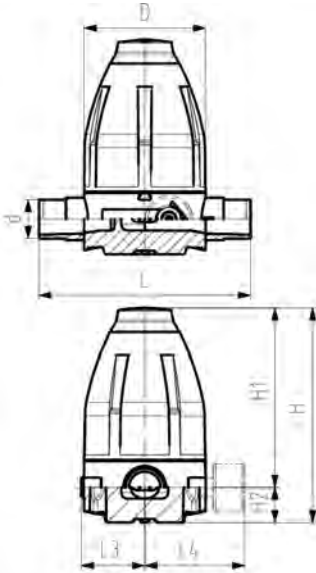
Type 582 Pressure Reducing Valve SYGEF Standard PVDF Butt fusion spigots metric Without manometer

Model:

- Diaphragm PTFE/EPDM
- Integrated stainless steel mounting inserts
- 0.5-9.0 bar (7-130 psi)

0.3-3.0 bar (4-44 psi) on request

Manometer on request



d (mm)	DN (mm)	PN (bar)	O-rings FKM Part No.	USD	weight (kg)
20	15	10	185 582 012	1,425.00	0.700
25	20	10	185 582 013	2,152.00	1.550
32	25	10	185 582 014	2,379.00	1.560
40	32	10	185 582 015	2,737.00	4.370
50	40	10	185 582 016	3,087.00	4.400
63	50	10	185 582 017	3,860.00	4.520

d (mm)	D (mm)	H (mm)	H1 (mm)	H2 (mm)	H3 (mm)	L (mm)	L3 (mm)	M	closest inch (inch)
20	79	132	111	21	14	150	42	M6	½
25	100	177	148	29	14	190	53	M6	¾
32	100	177	148	29	14	190	53	M6	1
40	147	251	207	44	21	240	76	M8	1 ¼
50	147	251	207	44	21	240	76	M8	1 ½
63	147	251	207	44	21	260	76	M8	2



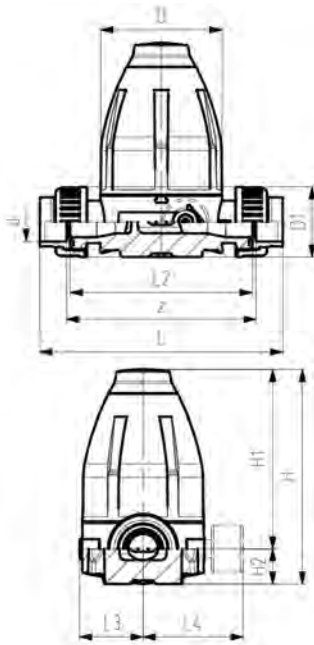
Type 582 Pressure Reducing Valve SYEGEF Standard PVDF Unions with fusion sockets metric Without manometer

Model:

- Diaphragm PTFE/EPDM
- Integrated stainless steel mounting inserts
- 0.5-9.0 bar (7-130 psi)

0.3-3.0 bar (4-44 psi) on request

Manometer on request



d (mm)	DN (mm)	PN (bar)	O-rings FKM Part No.	USD	weight (kg)
20	15	10	185 582 112	1,710.00	0.780
25	20	10	185 582 113	2,581.00	1.650
32	25	10	185 582 114	2,737.00	1.700
40	32	10	185 582 115	3,283.00	4.530
50	40	10	185 582 116	3,551.00	4.750
63	50	10	185 582 117	4,631.00	5.050

d (mm)	D (mm)	D1 (mm)	H (mm)	H1 (mm)	H2 (mm)	H3 (mm)	L (mm)	L2 (mm)	L3 (mm)	M	z (mm)	closest inch (inch)
20	79	43	132	111	21	12	158	120	42	M6	130	½
25	100	53	177	148	29	14	192	150	53	M6	160	¾
32	100	60	177	148	29	14	196	150	53	M6	160	1
40	147	74	251	207	44	21	255	205	76	M8	215	1 ¼
50	147	82	251	207	44	21	261	205	76	M8	215	1 ½
63	147	100	251	207	44	21	269	205	76	M8	215	2

Type 582 Pressure Reducing Valve SYGEF Standard PVDF Unions with butt fusion spigots metric Without manometer

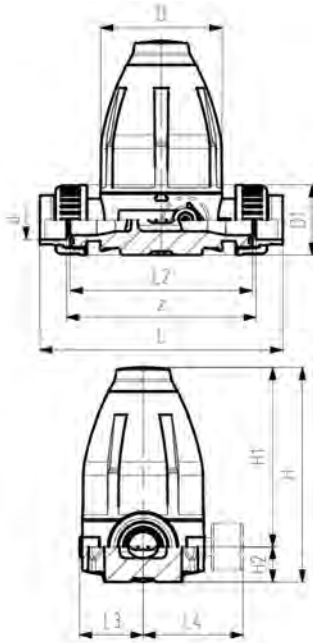


Model:

- Diaphragm PTFE/EPDM
- Integrated stainless steel mounting inserts
- 0.5-9.0 bar (7-130 psi)

0.3-3.0 bar (4-44 psi) on request

Manometer on request



d (mm)	DN (mm)	PN (bar)	O-rings FKM Part No.	USD	weight (kg)
20	15	10	185 582 512	1,797.00	0.830
25	20	10	185 582 513	2,710.00	1.710
32	25	10	185 582 514	2,873.00	1.760
40	32	10	185 582 515	3,448.00	4.750
50	40	10	185 582 516	3,728.00	4.840
63	50	10	185 582 517	5,326.00	5.140

d (mm)	D (mm)	D1 (mm)	H (mm)	H1 (mm)	H2 (mm)	H3 (mm)	L (mm)	L2 (mm)	L3 (mm)	M	closest inch (inch)
20	79	43	132	111	21	12	226	120	42	M6	½
25	100	53	177	148	29	14	262	150	53	M6	¾
32	100	60	177	148	29	14	268	150	53	M6	1
40	147	74	251	207	44	21	329	205	76	M8	1 ¼
50	147	82	251	207	44	21	335	205	76	M8	1 ½
63	147	100	251	207	44	21	341	205	76	M8	2



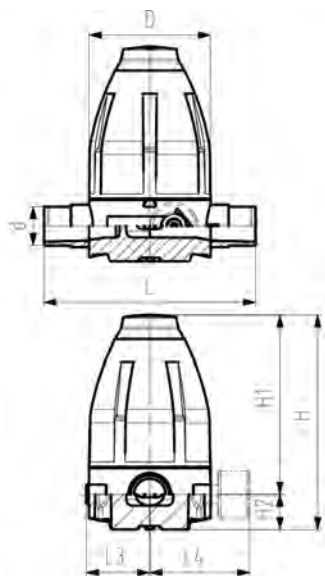
Type 586 Pressure Retaining Valve SYGEF Standard PVDF Butt fusion spigots metric Without manometer

Model:

- Diaphragm PTFE/EPDM
- Integrated stainless steel mounting inserts
- 0.5-9.0 bar (7-130 psi)

0.3-3.0 bar (4-44 psi) on request

Manometer on request



d (mm)	DN (mm)	PN (bar)	O-rings FKM Part No.	USD	weight (kg)
20	15	10	185 586 012	1,145.00	0.700
25	20	10	185 586 013	1,369.00	1.570
32	25	10	185 586 014	1,696.00	1.580
40	32	10	185 586 015	2,545.00	4.410
50	40	10	185 586 016	2,850.00	4.430
63	50	10	185 586 017	3,423.00	4.550

d (mm)	D (mm)	H (mm)	H1 (mm)	H2 (mm)	H3 (mm)	L (mm)	L3 (mm)	M	closest inch (inch)
20	79	132	111	21	14	150	42	M6	½
25	100	177	148	29	14	190	53	M6	¾
32	100	177	148	29	14	190	53	M6	1
40	147	251	207	44	21	240	76	M8	1 ¼
50	147	251	207	44	21	240	76	M8	1 ½
63	147	251	207	44	21	260	76	M8	2



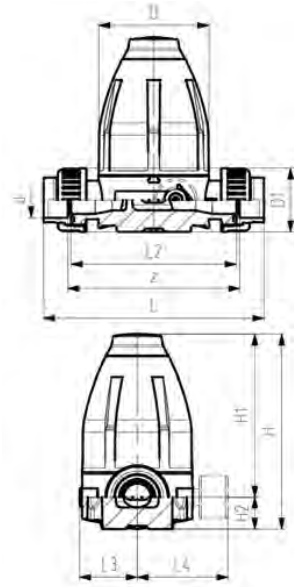
Type 586 Pressure Retaining Valve SYGEF Standard PVDF Unions with fusion sockets metric Without manometer

Model:

- Diaphragm PTFE/EPDM
- Integrated stainless steel mounting inserts
- 0.5-9.0 bar (7-130 psi)

0.3-3.0 bar (4-44 psi) on request

Manometer on request



d (mm)	DN (mm)	PN (bar)	O-rings FKM Part No.	USD	weight (kg)
20	15	10	185 586 112	1,431.00	0.780
25	20	10	185 586 113	1,712.00	1.670
32	25	10	185 586 114	2,121.00	1.720
40	32	10	185 586 115	3,180.00	4.700
50	40	10	185 586 116	3,564.00	4.790
63	50	10	185 586 117	4,279.00	5.090

d (mm)	D (mm)	H (mm)	H1 (mm)	H2 (mm)	H3 (mm)	L (mm)	L2 (mm)	L3 (mm)	M	z (mm)	closest inch (inch)
20	79	132	111	21	12	158	120	42	M6	130	½
25	100	177	148	29	14	192	150	53	M6	160	¾
32	100	177	148	29	14	196	150	53	M6	160	1
40	147	251	207	44	21	255	205	76	M8	215	1 ¼
50	147	251	207	44	21	261	205	76	M8	215	1 ½
63	147	251	207	44	21	269	205	76	M8	215	2

Type 586 Pressure Retaining Valve SYGEF Standard PVDF Unions with butt fusion spigots metric Without manometer

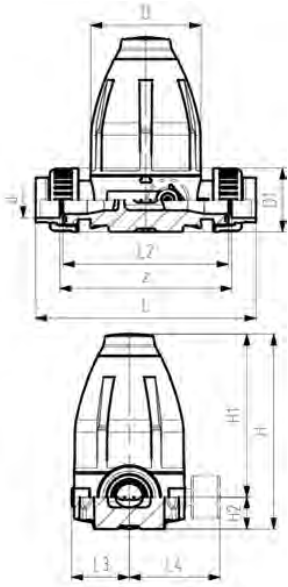


Model:

- Diaphragm PTFE/EPDM
- Integrated stainless steel mounting inserts
- 0.5-9.0 bar (7-130 psi)

0.3-3.0 bar (4-44 psi) on request

Manometer on request



d (mm)	DN (mm)	PN (bar)	O-rings FKM Part No.	USD	weight (kg)
20	15	10	185 586 512	1,575.00	0.820
25	20	10	185 586 513	1,884.00	1.710
32	25	10	185 586 514	2,333.00	1.760
40	32	10	185 586 515	3,498.00	4.740
50	40	10	185 586 516	3,920.00	4.830
63	50	10	185 586 517	4,705.00	5.130

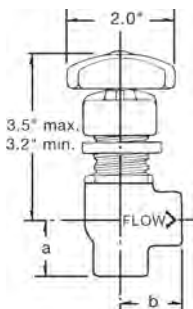
d (mm)	D (mm)	D1 (mm)	H (mm)	H1 (mm)	H2 (mm)	H3 (mm)	L (mm)	L2 (mm)	L3 (mm)	M	z (mm)	closest inch (inch)
20	79	43	132	111	21	12	226	120	42	M6	130	½
25	100	53	177	148	29	14	262	150	53	M6	160	¾
32	100	60	177	148	29	14	268	150	53	M6	160	1
40	147	74	251	207	44	21	329	205	76	M8	215	1 ¼
50	147	82	251	207	44	21	335	205	76	M8	215	1 ½
63	147	100	251	207	44	21	341	205	76	M8	215	2

B

**Needle Valve - Type 522
Angle Body, Female NPT**



Size	PN (bar)	Part No.	USD	SP weight (lb)	a (mm)	b (mm)	
¼	10	155 522 579	126.00	1	0.309	25	28
½	10	155 522 581	126.00	1	0.309	28	31

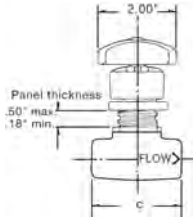


B



Needle Valve - Type 522
Globe Body, Female NPT

Size	PN (bar)	Part No.	USD	SP	weight (lb)	c (mm)
¼	10	155 522 554	140.00	1	0.309	58
½	10	155 522 556	140.00	1	0.309	65



Miscellaneous

B



T523, Low Profile Gauge Isolator Without Gauge

Size	Part No.	USD	weight (lb)
1/4" x 1/4" FNPT	* 155 523 533	143.01	0.540
1/4" X 1/2" FNPT	* 155 523 535	143.01	0.562

B



T523, Low Profile Gauge Isolator With Gauge, Scale 0-160 PSI

Size	Part No.	USD	weight (lb)
1/4" x 1/4" FNPT	* 155 523 537	309.84	1.393
1/4" x 1/2" FNPT	* 155 523 539	309.84	0.705

A



Pure Fluid Dispenser

Size	Part No.	USD	weight (lb)
3/8" NPT	* 155 524 580	814.51	1.190