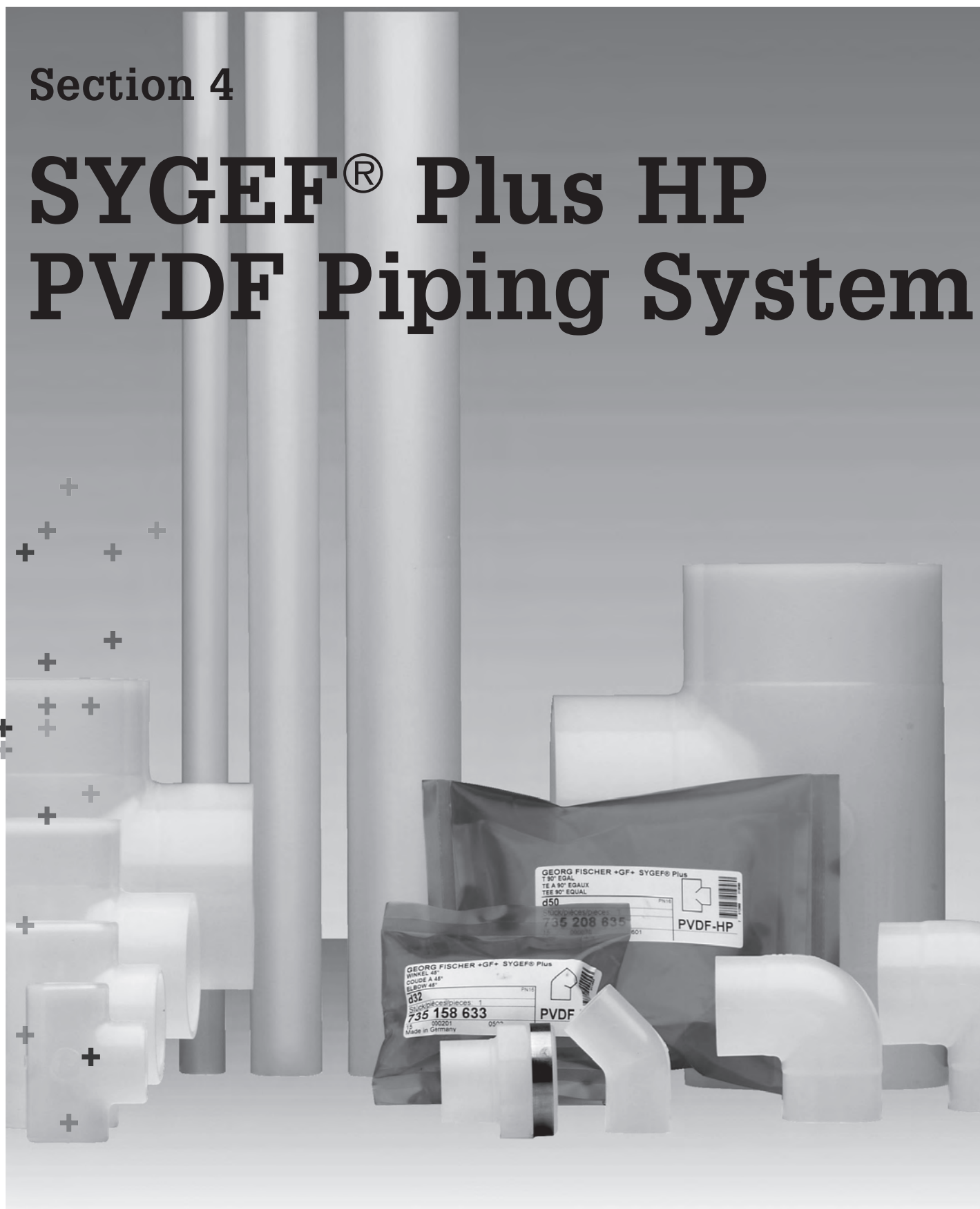


Section 4

SYGEF® Plus HP PVDF Piping System



SYGEF® Plus HP PVDF – Product Specification

Material	High Purity Polyvinylidene Fluoride (PVDF HP)
Color	Virgin material, translucent
Density	~1.78 g/cm ³ (ISO 1183 / ASTM D 792)
Surface tension	30–35 mJ/m ²
Linear expansion coefficient	0.12–0.18 mm/mK (DIN 53752)
E-module (tensile strength)	2100 N/mm ² (EN ISO 527 / ASTM D 790)
Thermal conductivity	0.19 W/mK (DIN 52612)
Surface resistivity	5 × 10 ¹⁴ Ωcm (IEC 60093)
Dimension	d 20 (½")–d 450 (18") in accordance to ISO 10931
Pressure rating	Pipes/fittings: PN 16/232 PSI (d 20–d 225), PN 10/150PSI (d 90–d 450) Valves: separate specification
Temperature rating	from –20 °C to 140 °C (–4 °F–284 °F)
Production⁽¹⁾	Fittings/diaphragm valves: injection moulded Pipes: extruded Produced under clean room ISO 14644-1 Class 7 (U.S. Fed. Std. 209E Class 10'000) conditions. Subsequent assembling, quality inspection and cleaning is carried out using 18 MΩ pure water under clean room ISO 14644-1 Class 5-6 (U.S. Fed. Std. 209E Class 100-1000) conditions.
Surface finish	Inner surface ≤ d 225 Ra ≤ 0.2 μm (9 μin) / > d 225 Ra ≤ 0.3 μm (12 μin) for injection moulded and extruded components
Marking	All components are embossed with a permanent identification during the production process to ensure full traceability. Lot No Material Dimension Pressure Rating
Testing and inspection (ISO 10931)	Inclusions Visual inspection Surface finish Dimension tolerance Pressure testing Periodic leachout per SEMI F 40 / F 57
Approvals/conformance	ASME BPE FDA CFR 21 177.2510 USP 25 class VI (physiological non-toxic) SEMI F57
Welding technology	BCF® Plus, bead and crevice free fusion, size d 20 (½")–d 110 (4") IR® Plus, infrared fusion (DVS 2207-6), size d 20 (½")–d 450 (18")
Documentation⁽¹⁾	Certificate of Conformance with FDA, USP EN 10204 2.2 EN 10204 3.1b
Packing⁽²⁾	Pipes capped and each component double bagged in an specified inner bag and an outer bag under clean room ISO 14644-1 Class 6 (U.S. Fed. Std. 209E Class 1000) conditions.
Labeling	Brand Name Product Description Code Number Material Dimension CE-labeling
Main applications	Uses include delivery of ultrapure water in the semiconductor/electronic industry, pharmaceutical grade water (WFI/PW) and analytical DI water to highest purity requirements. A wide range of sanitization methods is suitable such as Ozone, hot water or steam.

⁽¹⁾ on request

⁽²⁾ Excluding pressure regulating valves. Products are cleaned and double bagged after production assuring controlled process and highest product standards.

Table of contents**Page**

Pipe

174



IR Plus/BCF Plus Fusion Fittings

175



Manual Valves

203

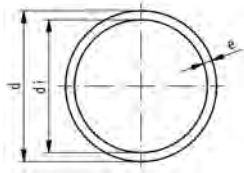


Rotameters

210

Pipe

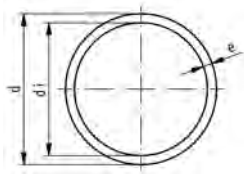
A



Pipe, PN 16, PVDF-HP

d (mm)	FM	Part No.	USD / m	lbs/meter	e (mm)	di (mm)
20	BCF, IR	* 175 481 203	52.95	0.463	1.9	16.2
25	BCF, IR	* 175 481 204	67.05	0.593	1.9	21.2
32	BCF, IR	* 175 481 205	111.92	0.959	2.4	27.2
40	BCF, IR	* 175 481 206	139.90	1.241	2.4	35.2
50	BCF, IR	* 175 481 207	216.58	1.874	3.0	44.0
63	BCF, IR	* 175 481 208	279.79	2.403	3.0	57.0
75	BCF, IR	* 175 481 209	397.93	3.417	3.6	67.8
90	BCF, IR	* 175 481 210	573.06	4.916	4.3	81.4
110	BCF, IR	* 175 481 211	859.07	7.341	5.3	99.4
160	IR	* 175 481 214	Call		7.7	144.6
200	IR	* 175 481 216	Call		9.6	180.8
225	IR	* 175 481 217	Call		10.8	202.6
250	IR	* 175 481 218	Call		11.9	226.2
315	IR	* 175 481 220	Call		15.0	285.0

A



Pipe, PN 10, PVDF-HP

d (mm)	FM	Part No.	USD / m	lbs/meter	e (mm)	di (mm)
90	BCF, IR	* 175 481 665	397.93	3.263	2.8	84.4
110	BCF, IR	* 175 481 666	545.08	4.850	3.4	103.2
160		* 175 481 668	1,233.16	10.009	4.9	150.2
200		* 175 481 669	1,823.83	15.851	6.2	187.6
225		* 175 481 670	2,413.47	19.731	6.9	211.2
250		* 175 481 671	2,900.52	24.471	7.7	234.6
315		* 175 481 674	4,176.17	38.801	9.7	295.6
355		* 175 481 657	Call	46.208	10.9	333.2
400		* 175 481 658	Call	58.753	12.3	375.4
450		* 175 481 659	Call	74.163	13.8	422.4

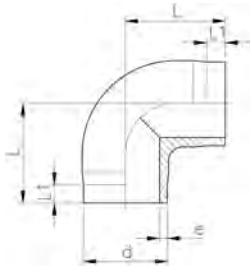
IR Plus/BCF Plus Fusion Fittings

A

90° Elbow Short Radius, PN 16, PVDF-HP



	FM	d	Part No.	USD weight	e	L	L1	
		(mm)		(lb)	(mm)	(mm)	(mm)	
	BCF, IR	20	735 108 631	17.72	0.037	1.9	38	25
	BCF, IR	25	735 108 632	20.00	0.051	1.9	42	26
	BCF, IR	32	735 108 633	37.62	0.088	2.4	46	26
	BCF, IR	40	^ 735 108 634	55.34	0.132	2.4	51	28
	BCF, IR	50	735 108 635	87.05	0.231	3.0	58	28
	BCF, IR	63	735 108 636	155.44	0.437	3.0	66	28

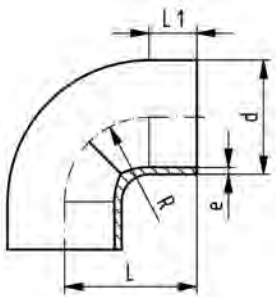


A

90° Elbow Sweep Radius, PN 16, PVDF-HP

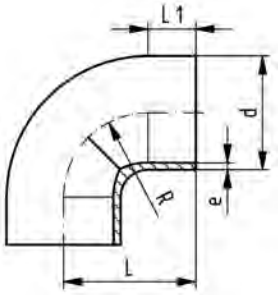


d	FM	Part No.	USD weight	e	L	L1	R
(mm)			(lb)	(mm)	(mm)	(mm)	(mm)
75	BCF, IR	^ 735 018 737	266.94	0.536	3.6	75	62
90	BCF, IR	^ 735 018 738	392.64	0.933	4.3	90	77
110	BCF, IR	^ 735 018 739	699.48	1.554	5.3	110	98
160	IR	735 018 742	Call	4.524	7.7	160	141
200	IR	735 018 744	Call	8.488	9.6	200	181
225	IR	735 018 745	Call	11.612	10.8	220	200
250	IR	^ 735 018 746	Call	14.409	11.9	254	232
315	IR	^ 735 018 748	Call	28.728	15.0	321	297



A

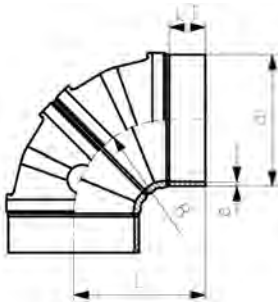
90° Elbow Sweep Radius, PN 10, PVDF-HP



d (mm)	FM	Part No.	USD weight (lb)	e (mm)	L (mm)	L1 (mm)	R (mm)	
90	BCF, IR	^ 735 018 538	294.30	0.728	2.8	90	23	77
110	BCF, IR	^ 735 018 539	547.15	1.268	3.4	110	23	98
160	IR	735 018 542	1,205.18	3.395	4.9	160	33	141
200	IR	735 018 544	1,596.89	4.449	6.2	200	33	181
225	IR	* 735 018 545	1,960.62	8.713	6.9	220	33	200
250	IR	^ 735 018 546	2,448.70	9.489	7.7	254	48	232
315	IR	^ 735 018 548	3,905.70	19.912	9.7	321	48	297

A

90° Elbow Sweep Radius, PN 10, PVDF-HP



d (mm)	FM	Part No.	USD weight (lb)	e (mm)	L (mm)	L1 (mm)	R (mm)	
355	IR	^ 735 018 549	Call	39.842	10.9	359	100	257
400	IR	^ 735 018 550	Call	52.878	12.3	392	100	290
450	IR	^ 735 018 551	Call	70.652	13.8	430	100	328

A

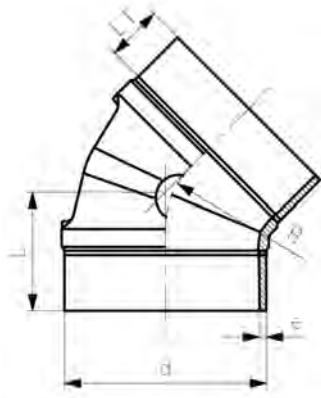
45° Elbow, PN 16, PVDF-HP



BCF, IR	FM (mm)	d (mm)	Part No.	USD weight (lb)	e (mm)	L (mm)	L1 (mm)
		20	735 158 631	21.24	1.9	32	25
		25	735 158 632	25.91	1.9	34	26
		32	735 158 633	30.57	2.4	36	26
		40	^ 735 158 634	56.48	2.4	39	28
		50	735 158 635	70.57	3.0	42	30
		63	735 158 636	112.95	3.0	47	31
		75	^ 735 158 637	225.91	3.6	49	32
		90	735 158 638	337.82	4.3	57	37
		110	735 158 639	589.64	5.3	70	46
		160	735 158 642	Call	7.7	100	62
		200	735 158 644	Call	9.6	124	77
		225	* 735 158 645	Call	10.8	140	88

A

45° Elbow, PN 16, PVDF-HP



Model:

- Material: PVDF

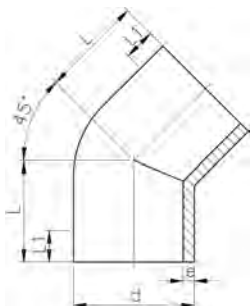
d (mm)	PN (bar)	FM	Part No.	USD	SP weight (kg)	e (mm)	L (mm)	L1 (mm)	R (mm)
250	16		735 158 646	Call	1 3.669	11.9	120	47	232
315	16		* 735 158 648	Call	1 7.162	15.0	147	47	297

A

45° Elbow, PN 10, PVDF-HP



d (mm)	FM	Part No.	USD weight (lb)	e (mm)	L (mm)	L1 (mm)	
90	BCF, IR	^ 735 158 538	251.81	0.430	2.8	57	37
110	BCF, IR	^ 735 158 539	453.89	0.767	3.4	70	46
160	IR	735 158 542	1,064.25	2.174	4.9	100	62
200	IR	735 158 544	1,307.77	4.251	6.2	124	77
225	IR	* 735 158 545	1,649.74	6.023	6.9	140	88

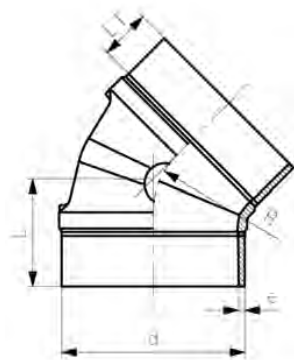


A

45° Elbow, PN 10, PVDF-HP



d (mm)	FM	Part No.	USD weight (lb)	e (mm)	L (mm)	L1 (mm)	R (mm)	
250	IR	* 735 158 546	3,292.23	5.296	7.7	120	47	232
315	IR	* 735 158 548	Call	10.853	9.7	147	47	297



A

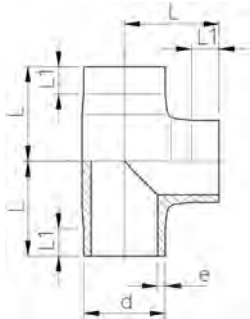
Tee, PN 16, PVDF-HP



	FM	d (mm)	Part No.	USD	weight (lb)	e (mm)	L (mm)	L1 (mm)
BCF, IR		20	735 208 631	25.91	0.051	1.9	38	25
BCF, IR		25	735 208 632	32.95	0.071	1.9	42	27
BCF, IR		32	735 208 633	50.57	0.123	2.4	46	27
BCF, IR		40	^ 735 208 634	72.95	0.183	2.4	51	28
BCF, IR		50	735 208 635	127.46	0.344	3.0	58	28
BCF, IR		63	735 208 636	183.42	0.595	3.0	66	28
BCF, IR		75	^ 735 208 637	337.82	0.741	3.6	75	32
BCF, IR		90	735 208 638	489.12	1.294	4.3	90	39
BCF, IR		110	735 208 639	659.07	2.324	5.3	110	48
		160	735 208 642	1,724.35	7.513	7.7	160	71
		200	735 208 644	2,355.44	15.091	9.6	200	80
		225	* 735 208 645	2,610.36	21.506	10.8	220	86
	IR	250	* 735 208 646	Call	23.861	11.9	223	70
	IR	315	735 208 648	Call	47.227	15.0	274	74

A

Tee, PN 10, PVDF-HP



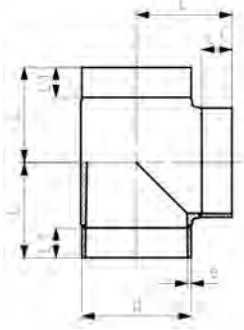
	d (mm)	FM	Part No.	USD	weight (lb)	e (mm)	L (mm)	L1 (mm)
90	BCF, IR		^ 735 208 538	377.20	0.955	2.8	90	39
110	BCF, IR		^ 735 208 539	501.55	1.689	3.4	110	48
160		IR	735 208 542	1,289.12	4.960	4.9	160	71
200		IR	735 208 544	1,708.81	11.845	6.2	200	80
225		IR	* 735 208 545	2,185.49	16.028	6.9	220	86
250		IR	^ 735 208 546	2,757.51	15.298	7.7	223	70
315		IR	^ 735 208 548	4,367.88	30.605	9.7	274	74

A

Tee, PN 10, PVDF-HP



d (mm)	FM	Part No.	USD weight (lb)	e (mm)	L (mm)	L1 (mm)
355	IR	^ 735 208 549	Call 47.492	10.9	311	100
400	IR	^ 735 208 550	Call 64.027	12.3	332	100
450	IR	^ 735 208 551	Call 85.709	13.8	357	100

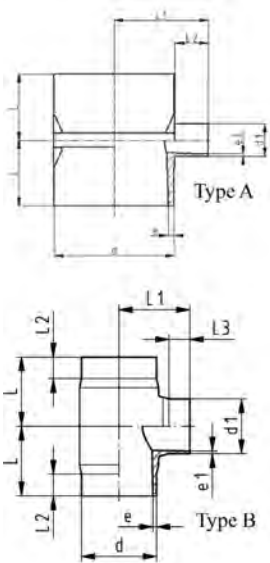


A

Molded Reducing Tee, PN 16, PVDF-HP

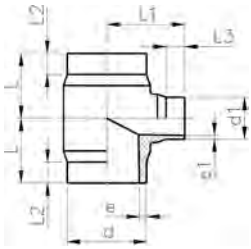


	d - d1 (mm)	FM	Part No.	USD weight (lb)	e (mm)	e1 (mm)	L (mm)	L1 (mm)	L2 (mm)	L3 (mm)	
A	63 - 20	BCF, IR	^ 735 208 956	379.27	0.551	3.0	1.9	60	67	25	35
A	63 - 25	BCF, IR	^ 735 208 957	379.27	0.540	3.0	1.9	60	66	25	34
A	63 - 32	BCF, IR	^ 735 208 958	379.27	0.567	3.0	2.4	60	67	25	25
A	63 - 40	BCF, IR	^ 735 208 959	379.27	0.560	3.0	2.4	60	66	25	26
A	75 - 20	BCF, IR	^ 735 208 961	504.66	0.767	3.6	1.9	65	69	25	31
A	75 - 25	BCF, IR	^ 735 208 962	504.66	0.785	3.6	1.9	65	72	25	34
A	75 - 32	BCF, IR	^ 735 208 963	504.66	0.679	3.6	2.4	65	69	25	31
A	75 - 40	BCF, IR	^ 735 208 964	504.66	0.688	3.6	2.4	65	72	25	26
A	75 - 50	BCF, IR	^ 735 208 965	504.66	0.820	3.6	3.0	65	69	25	26
A	90 - 20	BCF, IR	^ 735 208 967	672.54	1.036	4.3	1.9	65	76	25	31
A	90 - 25	BCF, IR	^ 735 208 968	672.54	1.027	4.3	1.9	65	79	25	34
A	90 - 32	BCF, IR	^ 735 208 969	672.54	0.893	4.3	2.4	65	76	25	31
A	90 - 40	BCF, IR	^ 735 208 970	672.54	1.049	4.3	2.4	65	79	25	26
A	90 - 50	BCF, IR	^ 735 208 971	672.54	0.996	4.3	3.0	65	76	25	26
B	90 - 63	BCF, IR	^ 735 208 972	672.54	1.347	4.3	3.0	80	85	25	25
A	110 - 20	BCF, IR	^ 735 208 974	953.37	1.413	5.3	1.9	65	86	25	31
A	110 - 25	BCF, IR	^ 735 208 975	953.37	1.257	5.3	1.9	65	89	25	34
A	110 - 32	BCF, IR	^ 735 208 976	953.37	1.257	5.3	2.4	65	86	25	31
A	110 - 40	BCF, IR	^ 735 208 977	953.37	1.411	5.3	2.4	65	89	25	26
A	110 - 50	BCF, IR	^ 735 208 978	953.37	1.411	5.3	3.0	65	86	25	26
B	110 - 63	BCF, IR	^ 735 208 979	953.37	2.039	5.3	3.0	90	95	30	25
B	110 - 75	BCF, IR	^ 735 208 980	953.37	2.094	5.3	3.0	90	95	30	25
B	110 - 90	BCF, IR	^ 735 208 981	953.37	2.114	5.3	4.3	90	95	30	25
B	160 - 90	IR	^ 735 208 687	1,752.33	6.814	7.7	4.3	155	130	60	25
B	160 - 110	IR	^ 735 208 686	1,752.33	6.786	7.7	5.3	155	130	60	25
B	225 - 90	IR	^ 735 208 695	2,819.69	11.956	10.8	4.3	155	160	60	25
B	225 - 110	IR	^ 735 208 694	2,819.69	13.448	10.8	5.3	155	160	60	25



A

Molded Reducing Tee, PN 10, PVDF-HP

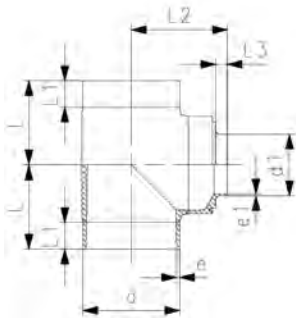


d - d1 (mm)	PN (bar)	SDR	FM	Part No.	USD	weight (lb)
160 - 90	10	33 - 21	IR	^ 735 208 587	1,834.20	5.359
160 - 110	10	33 - 21	IR	^ 735 208 586	1,834.20	5.498
225 - 90	10	33 - 21	IR	^ 735 208 595	2,967.88	9.919
225 - 110	10	33 - 21	IR	^ 735 208 594	2,967.88	10.110
225 - 160	10	33 - 33	IR	^ 735 208 593	2,967.88	9.815

d - d1 (mm)	e (mm)	e1 (mm)	L (mm)	L1 (mm)	L2 (mm)	L3 (mm)
160 - 90	4.9	4.3	155	130	60	25
160 - 110	4.9	5.3	155	130	60	25
225 - 90	6.9	4.3	155	160	60	25
225 - 110	6.9	5.3	155	160	60	25
225 - 160	6.9	4.9	155	170	60	35

A

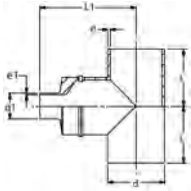
Molded Reducing Tee, PN 10, PVDF-HP



d - d1 (mm)	d fusion	d1 fusion	Part No.	USD	weight (lb)
355 - 225	IR450	IR315	* 735 209 815	Call	51.718
355 - 315	IR450	IR450, IR315	* 735 209 818	Call	49.924
400 - 225	IR450	IR315	* 735 209 827	Call	70.374
400 - 315	IR450	IR450, IR315	* 735 209 830	Call	68.178
450 - 225	IR450	IR315	* 735 209 840	Call	94.876
450 - 315	IR450	IR450, IR315	* 735 209 843	Call	92.354

d - d1 (mm)	e (mm)	e1 (mm)	L (mm)	L1 (mm)	L2 (mm)	L3 (mm)
355 - 225	10.9	6.9	309	353	100	43
355 - 315	10.9	9.7	309	348	100	55
400 - 225	12.3	6.9	332	376	100	43
400 - 315	12.3	9.7	332	371	100	55
450 - 225	13.8	6.9	357	401	100	43
450 - 315	13.8	9.7	357	396	100	55

B

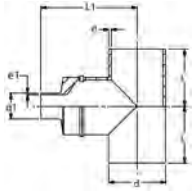


Fabricated Reducing Tee (25-110mm) PN 16, PVDF-HP

IR Plus/BCF Plus Fusion
Uses Molded Reducer

d (mm)	d1 (mm)	FM	Part No.	USD	e (mm)	e1 (mm)	L (mm)	L1 (mm)
25	20	IR	* 735 992 450	203.11	1.9	1.9	42	87.0
32	20	IR	* 735 992 451	215.54	2.4	1.9	46	91.0
32	25	IR	* 735 992 452	215.54	2.4	2.4	46	91.0
40	20	IR	* 735 992 453	252.85	2.4	1.9	51	98.0
40	25	IR	* 735 992 454	252.85	2.4	1.9	51	99.0
40	32	IR	* 735 992 455	252.85	2.4	2.4	51	99.0
50	20	IR	* 735 992 456	325.39	3.0	1.9	58	103.0
50	25	IR	* 735 992 457	325.39	3.0	1.9	58	106.0
50	32	IR	* 735 992 458	325.39	3.0	2.4	58	106.0
50	40	IR	* 735 992 459	325.39	3.0	2.4	58	108.0
63	20	IR	* 735 992 460	423.83	3.0	1.9	66	111.0
63	25	IR	* 735 992 461	423.83	3.0	1.9	66	112.0
63	32	IR	* 735 992 462	423.83	3.0	2.4	66	114.0
63	40	IR	* 735 992 463	423.83	3.0	2.4	66	116.0
63	50	IR	* 735 992 464	423.83	3.0	3.0	66	116.0
75	20	IR	* 735 992 465	801.04	3.6	1.9	75	123.0
75	25	IR	* 735 992 466	801.04	3.6	1.9	75	124.0
75	32	IR	* 735 992 467	801.04	3.6	2.4	75	125.0
75	40	IR	* 735 992 468	801.04	3.6	2.4	75	127.0
75	50	IR	* 735 992 469	801.04	3.6	3.0	75	128.0
75	63	IR	* 735 992 470	801.04	3.6	3.0	75	125.0
90	20	IR	* 735 992 471	934.72	4.3	1.9	90	148.0
90	25	IR	* 735 992 472	934.72	4.3	1.9	90	149.0
90	32	IR	* 735 992 473	934.72	4.3	2.4	90	150.0
90	40	IR	* 735 992 474	934.72	4.3	2.4	90	152.0
90	50	IR	* 735 992 475	934.72	4.3	3.0	90	153.0
90	63	IR	* 735 992 476	934.72	4.3	3.0	90	150.0
90	75	IR	* 735 992 477	934.72	4.3	3.6	90	145.0
110	20	IR	* 735 992 478	1,311.92	5.3	1.9	110	168.0
110	25	IR	* 735 992 479	1,311.92	5.3	1.9	110	169.0
110	32	IR	* 735 992 480	1,311.92	5.3	2.4	110	170.0
110	40	IR	* 735 992 481	1,311.92	5.3	2.4	110	172.0
110	50	IR	* 735 992 482	1,311.92	5.3	3.0	110	173.0
110	63	IR	* 735 992 483	1,311.92	5.3	3.0	110	170.0
110	75	IR	* 735 992 484	1,311.92	5.3	3.6	110	165.0
110	90	IR	* 735 992 485	1,311.92	5.3	4.3	110	165.0

B

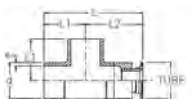


Fabricated Reducing Tee (160-315mm) PN 10, PVDF-HP

For sizes 250 mm and above, the L1 dimension is +/- 6 mm.

d (mm)	d1 (mm)	FM	Part No.	USD	e (mm)	e1 (mm)	L (mm)	L1 (mm)
160	63	IR	* 735 992 486	1,706.74	4.9	3.0	160	250
160	75	IR	* 735 992 487	1,706.74	4.9	3.6	160	225
160	90	IR	* 735 992 488	1,706.74	4.9	4.3	160	225
160	110	IR	* 735 992 489	1,706.74	4.9	5.3	160	225
200	63	IR	* 735 992 490	2,483.94	6.2	3.0	200	280
200	75	IR	* 735 992 491	2,483.94	6.2	3.6	200	275
200	90	IR	* 735 992 492	2,483.94	6.2	4.3	200	275
200	110	IR	* 735 992 493	2,483.94	6.2	5.3	200	275
200	160	IR	* 735 992 494	2,483.94	6.2	4.9	200	285
225	63	IR	* 735 992 495	3,163.73	6.9	3.0	220	310
225	75	IR	* 735 992 496	3,163.73	6.9	3.6	220	305
225	90	IR	* 735 992 497	3,163.73	6.9	4.3	220	305
225	110	IR	* 735 992 498	3,163.73	6.9	5.3	220	305
225	160	IR	* 735 992 499	3,163.73	6.9	4.9	220	315
225	200	IR	* 735 992 500	3,163.73	6.9	6.2	220	303
250	63	IR	* 735 992 501	4,521.24	7.7	3.0	223	313
250	75	IR	* 735 992 502	4,521.24	7.7	3.6	223	308
250	90	IR	* 735 992 503	4,521.24	7.7	4.3	223	309
250	110	IR	* 735 992 504	4,521.24	7.7	5.3	223	311
250	160	IR	* 735 992 505	4,521.24	7.7	4.9	223	310
250	200	IR	* 735 992 506	4,521.24	7.7	6.2	223	312
250	225	IR	* 735 992 507	4,521.24	7.7	6.9	223	294
315	63	IR	* 735 992 508	7,497.41	9.7	3.0	274	364
315	75	IR	* 735 992 509	7,497.41	9.7	3.6	274	359
315	90	IR	* 735 992 510	7,497.41	9.7	4.3	274	360
315	110	IR	* 735 992 511	7,497.41	9.7	5.3	274	362
315	160	IR	* 735 992 512	7,497.41	9.7	4.9	274	361
315	200	IR	* 735 992 513	7,497.41	9.7	6.2	274	363
315	225	IR	* 735 992 514	7,497.41	9.7	6.9	274	363
315	250	IR	* 735 992 515	7,497.41	9.7	7.7	274	367

B



Analytical Sanitary Sensor, PN 10 PVDF-HP

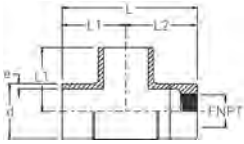
IR Plus/BCF Plus Fusion

d (mm)	Tube Size (inch)	FM	Part No.	USD	e (mm)	L (mm)	L1 (mm)	L2 (mm)
50	¾	BCF, IR	* 735 991 820	426.94	3.0	150	58	92
50	1	BCF, IR	* 735 991 821	432.12	3.0	150	58	92
50	1 ½	BCF, IR	* 735 991 822	435.23	3.0	150	58	92
63	¾	BCF, IR	* 735 991 823	511.92	3.0	166	66	100
63	1	BCF, IR	* 735 991 824	518.13	3.0	166	66	100
63	1 ½	BCF, IR	* 735 991 825	523.32	3.0	166	66	100
75	¾	BCF, IR	* 735 991 826	652.85	3.6	180	75	105
75	1	BCF, IR	* 735 991 827	660.10	3.6	180	75	105
75	1 ½	BCF, IR	* 735 991 828	662.18	3.6	180	75	105
90	¾	BCF, IR	* 735 991 829	830.05	4.3	203	90	113
90	1	BCF, IR	* 735 991 830	835.23	4.3	203	90	113
90	1 ½	BCF, IR	* 735 991 831	841.45	4.3	203	90	113
110	¾	BCF, IR	* 735 991 832	1,036.27	5.3	234	110	124
110	1	BCF, IR	* 735 991 833	1,042.49	5.3	234	110	124
110	1 ½	BCF, IR	* 735 991 834	1,044.56	5.3	234	110	124

B

**Analytical Threaded Sensor, PN 16
PVDF-HP**

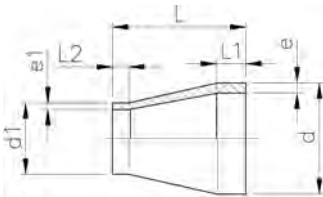
IR Plus/BCF Plus Fusion



d	FNPT	FM	Part No.	USD	e	L	L1	L2
(mm)	(inch)				(mm)	(mm)	(mm)	(mm)
50	¼	BCF, IR	* 735 991 840	274.61	3.0	135	58	77
50	½	BCF, IR	* 735 991 841	274.61	3.0	135	58	77
50	¾	BCF, IR	* 735 991 842	274.61	3.0	135	58	77
50	1	BCF, IR	* 735 991 843	274.61	3.0	135	58	77
63	¼	BCF, IR	* 735 991 844	379.27	3.0	151	66	85
63	½	BCF, IR	* 735 991 845	379.27	3.0	151	66	85
63	¾	BCF, IR	* 735 991 846	379.27	3.0	151	66	85
63	1	BCF, IR	* 735 991 847	379.27	3.0	151	66	85
75	¼	BCF, IR	* 735 991 848	544.04	3.6	165	75	90
75	½	BCF, IR	* 735 991 849	544.04	3.6	165	75	90
75	¾	BCF, IR	* 735 991 850	544.04	3.6	165	75	90
75	1	BCF, IR	* 735 991 851	544.04	3.6	165	75	90
90	¼	BCF, IR	* 735 991 852	754.40	4.3	188	90	98
90	½	BCF, IR	* 735 991 853	754.40	4.3	188	90	98
90	¾	BCF, IR	* 735 991 854	754.40	4.3	188	90	98
90	1	BCF, IR	* 735 991 855	754.40	4.3	188	90	98
110	¼	BCF, IR	* 735 991 856	993.78	5.3	219	110	109
110	½	BCF, IR	* 735 991 857	993.78	5.3	219	110	109
110	¾	BCF, IR	* 735 991 858	993.78	5.3	219	110	109
110	1	BCF, IR	* 735 991 859	993.78	5.3	219	110	109

A

Reducer, PN 16, PVDF-HP



d - d1	FM	Part No.	USD	weight	e1	e	L	L1	L2
(mm)				(lb)	(mm)	(mm)	(mm)	(mm)	(mm)
25 - 20	BCF, IR	735 908 600	17.72	0.026	1.9	1.9	50	22	22
32 - 20	BCF, IR	735 908 602	28.29	0.037	1.9	2.4	50	22	22
32 - 25	BCF, IR	735 908 601	28.29	0.040	1.9	2.4	50	22	22
40 - 20	BCF, IR	735 908 605	32.95	0.053	1.9	2.4	58	22	24
40 - 25	BCF, IR	735 908 604	32.95	0.055	1.9	2.4	55	22	24
40 - 32	BCF, IR	735 908 603	32.95	0.064	2.4	2.4	55	22	24
50 - 25	BCF, IR	735 908 608	41.24	0.119	1.9	3.0	60	22	25
50 - 32	BCF, IR	735 908 607	41.24	0.130	2.4	3.0	60	22	25
50 - 40	BCF, IR	735 908 606	41.24	0.132	2.4	3.0	60	22	25
63 - 32	BCF, IR	735 908 611	55.34	0.172	2.4	3.0	65	22	25
63 - 40	BCF, IR	735 908 610	55.34	0.181	2.4	3.0	65	22	25
63 - 50	BCF, IR	735 908 609	55.34	0.198	3.0	3.0	65	22	25
75 - 40	BCF, IR	735 908 614	112.95	0.240	2.4	3.6	68	24	25
75 - 50	BCF, IR	735 908 613	112.95	0.276	3.0	3.6	65	24	25
75 - 63	BCF, IR	735 908 612	112.95	0.282	3.0	3.6	65	24	25
90 - 63	BCF, IR	735 908 616	127.46	0.362	3.0	4.3	75	25	30
90 - 75	BCF, IR	735 908 615	127.46	0.412	3.6	4.3	75	25	35
110 - 63	BCF, IR	735 908 619	183.42	0.664	3.0	5.3	90	30	30
110 - 75	BCF, IR	735 908 618	183.42	0.639	3.6	5.3	90	30	35
110 - 90	BCF, IR	735 908 617	183.42	0.708	4.3	5.3	90	30	35

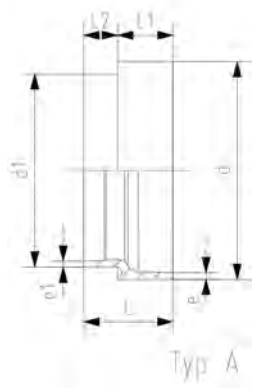
A



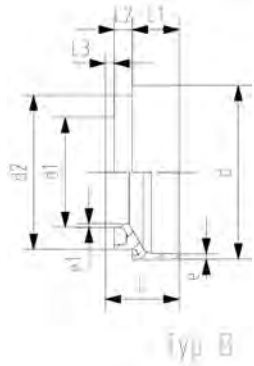
Typ A



Typ B



Typ A



Typ B

Reducer, PN 16, PVDF-HP

Model:

- Material: PVDF

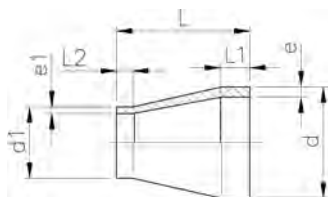
Note:

For Type B, must clamp spigot d2 in IR machine when welding spigot d1.

d - d1 (mm)	PN (bar)	fusion	d - d1	FM	Part No.	USD
250 - 160	16	IR	IR	IR	735 908 628	Call
250 - 225	16	IR	IR	IR	* 735 908 629	Call
315 - 160	16	IR	IR	IR	735 908 632	Call
315 - 225	16	IR	IR	IR	* 735 908 633	Call

d - d1 (mm)	e (mm)	e1 (mm)	L (mm)	L1 (mm)	L2 (mm)	L3 (mm)	Type	d2 (mm)
250 - 160	11.9	7.7	100	42	33	10	B	225
250 - 225	11.9	10.8	90	42	33		A	
315 - 160	15.0	7.7	115	50	33	10	B	225
315 - 225	15.0	10.8	105	50	33		A	

A



Reducer, PN 10, PVDF-HP

d - d1 (mm)	PN (bar)	SDR	FM	Part No.	USD	weight (lb)	e (mm)	e1 (mm)	L (mm)	L1 (mm)	L2 (mm)
90 - 63	10	33 - 21	BCF, IR	^ 735 908 511	97.62	0.328	2.8	3.0	75	25	30
110 - 63	10	33 - 21	BCF, IR	^ 735 908 513	136.79	0.362	3.4	3.0	90	30	30
110 - 90	10	33 - 33	BCF, IR	^ 735 908 515	146.11	0.527	3.4	2.8	90	30	35
160 - 110	10	33 - 21	IR	735 908 504	546.11	1.382	4.9	5.3	120	40	40
200 - 160	10	33 - 33	IR	^ 735 908 505	546.11	2.275	6.2	4.9	145	50	40
225 - 110	10	33 - 21	IR	* 735 908 506	631.09	3.027	6.9	5.3	160	55	35
225 - 160	10	33 - 33	IR	* 735 908 507	631.09	2.974	6.9	4.9	160	55	40
225 - 200	10	33 - 33	IR	^ 735 908 508	631.09	3.252	6.9	6.2	160	55	50
250 - 225	10	33 - 33	IR	^ 735 908 531	868.39	4.883	7.7	6.9	182	60	55
315 - 225	10	33 - 33	IR	^ 735 908 533	1,330.57	8.620	9.7	6.9	231	80	55

A



Typ A



Typ B

Reducer, PN 10, PVDF-HP

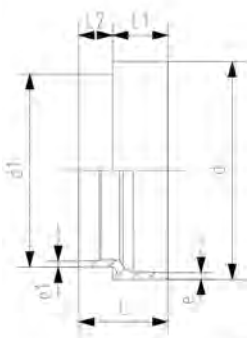
Model:

- Material: PVDF

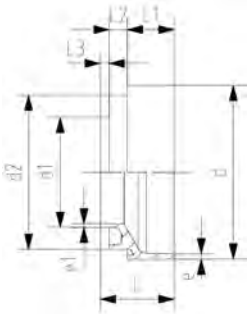
Note:

For Type B, must clamp spigot d2 in IR machine when welding spigot d1.

d - d1 (mm)	PN (bar)	SDR	FM	Part No.	USD
250 - 160	10	33 - 33	IR	^ 735 908 522	716.06
250 - 160	10	33 - 21	IR	^ 735 908 542	Call
250 - 225	10	33 - 33	IR	^ 735 908 524	716.06
250 - 225	10	33 - 21	IR	^ 735 908 544	Call
315 - 160	10	33 - 33	IR	* 735 908 528	1,102.59
315 - 160	10	33 - 21	IR	* 735 908 548	Call
315 - 225	10	33 - 33	IR	* 735 908 530	1,102.59
315 - 225	10	33 - 21	IR	* 735 908 550	Call



Typ A



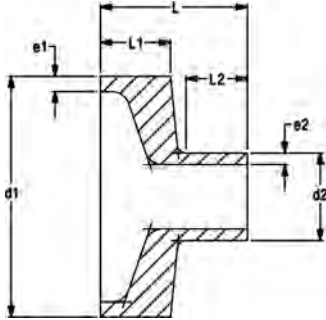
Typ B

d - d1 (mm)	e (mm)	e1 (mm)	L (mm)	L1 (mm)	L2 (mm)	L3 (mm)	Type	d2 (mm)
250 - 160	7.7	4.9	100	42	33	10	B	225
250 - 160	7.7	7.7	100	42	33	10	B	225
250 - 225	7.7	6.9	90	42	33		A	
250 - 225	7.7	10.8	90	42	33		A	
315 - 160	9.7	4.9	115	50	33	10	B	225
315 - 160	9.7	7.7	115	50	33	10	B	225
315 - 225	9.7	6.9	105	50	33		A	
315 - 225	9.7	10.8	105	50	33		A	

B

Flush Style Reducer (40-110mm), PN 16, PVDF-HP

IR Plus Fusion

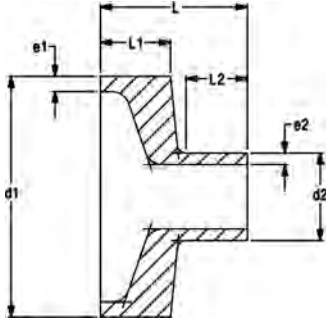


d1 (mm)	d2 (mm)	FM	Part No.	USD	e1 (mm)	e2 (mm)	L (mm)	L1 (mm)	L2 (mm)
40	20	IR	* 735 909 604	136.79	2.4	1.9	52	24	25
40	25	IR	* 735 909 605	136.79	2.4	1.9	53	24	26
40	32	IR	* 735 909 606	136.79	2.4	2.4	53	23	26
50	20	IR	* 735 909 607	191.71	3.0	1.9	50	22	25
50	25	IR	* 735 909 608	191.71	3.0	1.9	53	24	26
50	32	IR	* 735 909 609	191.71	3.0	2.4	53	23	26
50	40	IR	* 735 909 610	191.71	3.0	2.4	55	23	28
63	20	IR	* 735 909 611	249.74	3.0	1.9	50	22	25
63	25	IR	* 735 909 612	249.74	3.0	1.9	51	22	26
63	32	IR	* 735 909 613	249.74	3.0	2.4	53	23	26
63	40	IR	* 735 909 614	249.74	3.0	2.4	55	23	28
63	50	IR	* 735 909 615	249.74	3.0	3.0	55	22	28
75	20	IR	* 735 909 616	266.32	3.6	1.9	53	22	25
75	25	IR	* 735 909 617	266.32	3.6	1.9	54	22	26
75	32	IR	* 735 909 618	266.32	3.6	2.4	55	22	26
75	40	IR	* 735 909 619	266.32	3.6	2.4	57	22	28
75	50	IR	* 735 909 620	266.32	3.6	3.0	58	22	28
75	63	IR	* 735 909 621	266.32	3.6	3.0	55	22	28
90	20	IR	* 735 909 622	310.88	4.3	1.9	63	32	25
90	25	IR	* 735 909 623	310.88	4.3	1.9	64	32	26
90	32	IR	* 735 909 624	310.88	4.3	2.4	65	32	26
90	40	IR	* 735 909 625	310.88	4.3	2.4	67	32	28
90	50	IR	* 735 909 626	310.88	4.3	3.0	68	32	28
90	63	IR	* 735 909 627	310.88	4.3	3.0	65	32	28
90	75	IR	* 735 909 628	310.88	4.3	3.6	60	32	23
110	20	IR	* 735 909 629	409.33	5.3	1.9	63	32	25
110	25	IR	* 735 909 630	409.33	5.3	1.9	64	32	26
110	32	IR	* 735 909 631	409.33	5.3	2.4	65	32	26
110	40	IR	* 735 909 632	409.33	5.3	2.4	67	32	28
110	50	IR	* 735 909 633	409.33	5.3	3.0	68	32	28
110	63	IR	* 735 909 634	409.33	5.3	3.0	65	32	28
110	75	IR	* 735 909 635	409.33	5.3	3.6	60	32	23
110	90	IR	* 735 909 636	409.33	5.3	4.3	60	31	23

B

Flush Style Reducer (160-315mm), PN 10, PVDF-HP

IR Plus Fusion



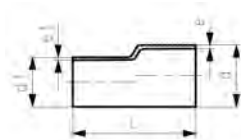
d1 (mm)	d2 (mm)	FM	Part No.	USD	e1 (mm)	e2 (mm)	L (mm)	L1 (mm)	L2 (mm)
160	63	IR	* 735 909 656	731.61	4.9	3.0	95	62	28
160	75	IR	* 735 909 657	731.61	4.9	3.6	70	42	23
160	90	IR	* 735 909 658	731.61	4.9	4.3	70	41	23
160	110	IR	* 735 909 659	731.61	4.9	5.3	70	39	23
200	63	IR	* 735 909 662	1,010.36	6.2	3.0	85	52	28
200	75	IR	* 735 909 663	1,010.36	6.2	3.6	80	52	23
200	90	IR	* 735 909 664	1,010.36	6.2	4.3	80	51	23
200	110	IR	* 735 909 665	1,010.36	6.2	5.3	80	49	23
200	160	IR	* 735 909 668	1,010.36	6.2	4.9	90	45	33
225	63	IR	* 735 909 669	1,953.37	6.9	3.0	95	62	28
225	75	IR	* 735 909 670	1,953.37	6.9	3.6	90	62	23
225	90	IR	* 735 909 671	1,953.37	6.9	4.3	90	61	23
225	110	IR	* 735 909 672	1,953.37	6.9	5.3	90	59	23
225	160	IR	* 735 909 675	1,953.37	6.9	4.9	100	55	33
225	200	IR	* 735 909 676	1,953.37	6.9	6.2	88	41	33
250	63	IR	* 735 909 677	2,356.48	7.7	3.0	98	60	28
250	75	IR	* 735 909 678	2,356.48	7.7	3.6	93	60	23
250	90	IR	* 735 909 679	2,356.48	7.7	4.3	94	60	23
250	110	IR	* 735 909 680	2,356.48	7.7	5.3	96	60	23
250	160	IR	* 735 909 683	2,356.48	7.7	4.9	95	50	33
250	200	IR	* 735 909 684	2,356.48	7.7	6.2	97	50	33
250	225	IR	* 735 909 685	2,356.48	7.7	6.9	79	30	33
315	63	IR	* 735 909 696	3,749.22	9.7	3.0	98	45	28
315	75	IR	* 735 909 697	3,749.22	9.7	3.6	93	45	23
315	90	IR	* 735 909 698	3,749.22	9.7	4.3	94	45	23
315	110	IR	* 735 909 699	3,749.22	9.7	5.3	96	45	23
315	160	IR	* 735 909 702	3,749.22	9.7	4.9	95	45	33
315	200	IR	* 735 909 703	3,749.22	9.7	6.2	97	45	33
315	225	IR	* 735 909 704	3,749.22	9.7	6.9	97	45	33
315	250	IR	* 735 909 705	3,749.22	9.7	7.7	101	41	48

A

Eccentric Reducer, PN 16, PVDF-HP

Model:

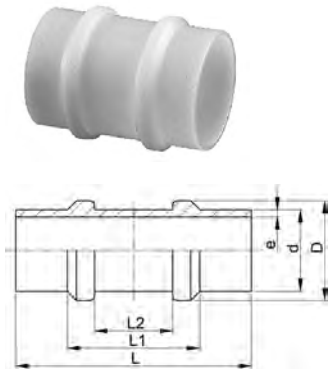
- Material: PVDF



d - d1 (mm)	FM	Part No.	USD	SP	GP weight (kg)	e (mm)	e1 (mm)	L (mm)
25 - 20	BCF, IR	735 938 737	25.91	1	30	0.020	1.9	80
32 - 20	BCF, IR	735 938 742	40.00	1	25	0.027	2.4	80
32 - 25	BCF, IR	735 938 741	40.00	1	25	0.030	2.4	80
40 - 20	BCF, IR	735 938 748	49.43	1	15	0.051	2.4	100
40 - 25	BCF, IR	735 938 747	49.43	1	15	0.043	2.4	100
40 - 32	BCF, IR	735 938 746	49.43	1	20	0.050	2.4	100
50 - 32	BCF, IR	735 938 753	58.86	1	20	0.068	3.0	100
50 - 40	BCF, IR	735 938 752	58.86	1	15	0.074	3.0	100
63 - 32	BCF, IR	735 938 760	82.38	1	15	0.105	3.0	100
63 - 40	BCF, IR	735 938 759	82.38	1	15	0.106	3.0	100
63 - 50	BCF, IR	735 938 758	85.91	1	15	0.097	3.0	100

A

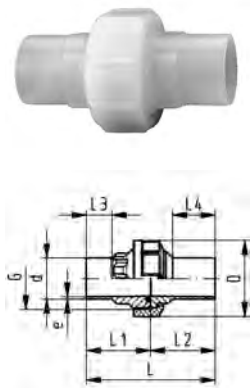
Restraint Fitting, PN 16, PVDF-HP



d (mm)	FM	Part No.	USD weight (lb)	D (mm)	e (mm)	L (mm)	L1 (mm)	L2 (mm)
20	BCF, IR	735 918 656	267.36	28	1.9	100	53	32
25	BCF, IR	735 918 657	294.30	33	1.9	100	53	32
32	BCF, IR	735 918 658	294.30	40	2.4	100	53	32
40	BCF, IR	735 918 659	379.27	48	2.4	100	53	32
50	BCF, IR	735 918 660	448.70	58	3.0	100	53	32
63	BCF, IR	735 918 661	575.13	71	3.0	105	53	32
75	BCF, IR	735 918 662	699.48	87	3.6	125	70	40
90	BCF, IR	735 918 663	1,176.17	105	4.3	127	70	40
110	BCF, IR	735 918 664	1,386.53	127	5.3	127	70	40

A

Union, FKM white, PN 16, PVDF-HP

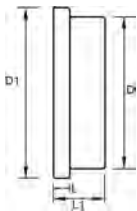


d (mm)	FM	Part No.	USD weight (lb)
20	BCF, IR	735 528 626	65.91
25	BCF, IR	735 528 627	83.52
32	BCF, IR	735 528 628	109.84
40	BCF, IR	735 528 629	152.33
50	BCF, IR	735 528 630	189.64
63	BCF, IR	735 528 631	293.26
75	BCF, IR	735 528 637	453.89
90	BCF, IR	735 528 638	610.36
110	BCF, IR	735 528 639	795.85

d (mm)	G (R/Rp BS Thread) (inch)	e (mm)	D (mm)	L (mm)	L1 (mm)	L2 (mm)	L3 (mm)	L4 (mm)
20	1	1.9	43	106	53	53	25	37
25	1 1/4	1.9	53	112	56	56	25	38
32	1 1/2	2.4	60	118	59	59	25	40
40	2	2.4	74	124	62	62	25	41
50	2 1/4	3.0	82	130	65	65	25	43
63	2 3/4	3.0	100	136	68	68	25	44
75	S 107.5 x 3.6	3.6	133	132	66	66	24	34
90	S 107.5 x 3.6	4.3	133	130	65	65	24	48
110	S 127.5 x 3.6	5.3	155	130	65	65	25	45

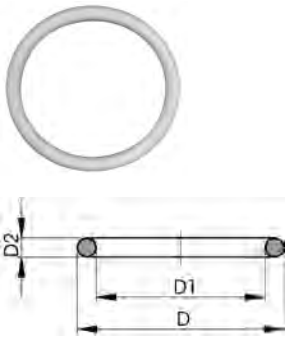
A

Union Blankoff, PN 10, PVDF-HP Not for tapping



d (mm)	Part No.	USD weight (lb)	D (mm)	D1 (mm)	L (mm)	L1 (mm)
20	* 155 482 101	80.00	28	30	5	13
25	* 155 482 102	81.14	36	38	6	15
32	* 155 482 103	91.71	36	38	6	16
40	* 155 482 104	101.14	42	45	6	17
50	* 155 482 105	112.95	59	63	7	20
63	* 155 482 106	126.42	74	78	8	22

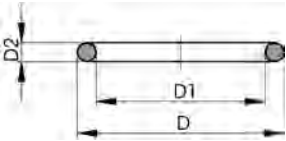
A



O-Ring, FKM white, for SYGEF Plus Unions

d (mm)	FKM Part No.	USD	D (mm)	D1 (mm)	D2 (mm)
20	^ 749 411 005	8.30	20.6	15.5	2.6
25	^ 749 411 006	13.50	27.3	20.2	3.5
32	^ 749 411 120	21.00	33.6	26.6	3.5
40	^ 749 411 062	22.00	41.6	34.5	3.5
50	^ 749 411 172	23.00	51.1	44.0	3.5
63	^ 749 411 054	25.00	63.0	55.0	4.0
75	* 749 411 013	53.89	79.9	69.2	5.3
90	* 749 411 014	71.50	92.6	81.9	5.3
110	* 749 411 015	81.87	117.0	101.0	5.3

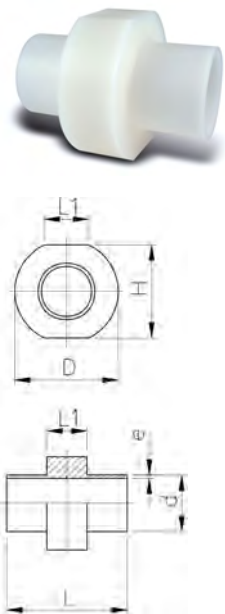
A



O-Ring, Chemraz® White, for SYGEF Plus HP Unions

d (mm)	Part No.	USD	D (mm)	D1 (mm)	D2 (mm)
20	150 411 005	Call	20.6	15	2.6
25	150 411 006	Call	27.3	20	3.5
32	150 411 120	Call	33.6	26	3.5
40	150 411 062	Call	41.6	34	3.5
50	150 411 172	Call	51.1	44	3.5
63	150 411 054	Call	63.0	55	4.0

B

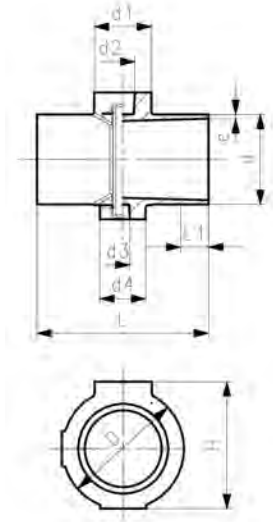


Instrument Installation Fitting, PN 16, PVDF-HP

Add "T" to end of part number and fee to list price for each factory milled thread (max. diameter is 3/4"). See published price list for fee.

d (mm)	FM	Part No.	USD	e (mm)	L (mm)	D (mm)	H (mm)	L1 (mm)
20	BCF, IR	* 735 918 606	547.15	1.9	140	71	58	40
25	BCF, IR	* 735 918 607	558.55	1.9	140	75	63	40
32	BCF, IR	* 735 918 608	636.27	2.4	140	81	70	40
40	BCF, IR	* 735 918 609	646.63	2.4	140	88	78	40
50	BCF, IR	* 735 918 610	713.99	3.0	140	97	88	40
63	BCF, IR	* 155 918 611	878.76	3.0	140	109	101	40
75	BCF, IR	* 155 918 612	1,041.45	3.6	140	120	113	40
90	BCF, IR	* 155 918 613	1,053.89	4.3	140	134	128	40
110	BCF, IR	* 155 918 614	1,271.50	5.3	140	153	148	40

A



Instrument Installation Fitting, PN 16, PVDF-HP

Note:

Threads need to be milled. Smallest tap on d2 side is 3/8" threads. Smallest tap on d3 side is 1/4" threads. Maximum tap sizes given in table below.

d (mm)	FM	Part No.	USD
63	BCF, IR	735 918 811	404.15
75	BCF, IR	735 918 812	511.92
90	BCF, IR	735 918 813	672.54
110	BCF, IR	735 918 814	968.91
160	IR	735 918 817	Call
225	IR	*735 918 820	Call

d (mm)	D (mm)	e (mm)	d1 (mm)	d2 (mm)	d3 (mm)	d4 (mm)	H (mm)	L (mm)	L1 (mm)	Rp/NPT (inch)
63	85	3.0	40	17	10	32	89	120	25	¼ - ¾
75	96	3.6	40	17	10	40	101	130	25	¼ - ¾
90	110	4.3	40	17	10	40	116	130	25	¼ - ¾
110	127	5.3	40	17	10	40	136	130	25	¼ - ¾
160	189	7.7	63	17	10	50	191	155	40	¼ - 1
225	248	10.8	63	17	10	50	256	155	40	¼ - 1

A

Instrument Installation Fitting, PN 10, PVDF-HP



Range of use:

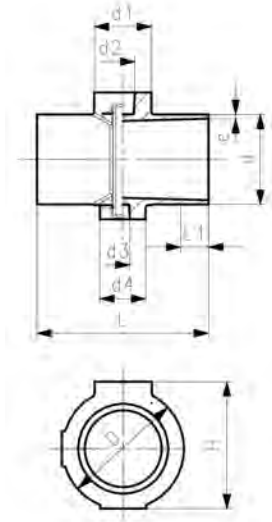
- Compatible with all signet sensors except flow sensors

Note:

Threads need to be milled. Smallest tap on d2 side is 3/8" threads. Smallest tap on d3 side is 1/4" threads. Maximum tap sizes given in table below.

d (mm)	PN (bar)	FM	Part No.	USD	weight (kg)
160	10	IR	735 918 717	1,227.98	1.141
225	10	IR	* 735 918 720	1,411.40	1.845

d (mm)	D (mm)	e (mm)	d1 (mm)	d2 (mm)	d3 (mm)	d4 (mm)	H (mm)	L (mm)	L1 (mm)	Rp/NPT (inch)
160	189	4.9	63	17	10	50	191	155	40	¼ - 1
225	248	6.9	63	17	10	50	256	155	40	¼ - 1

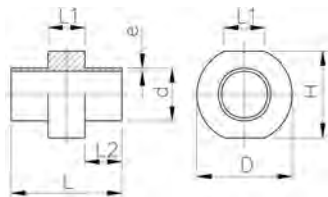


A

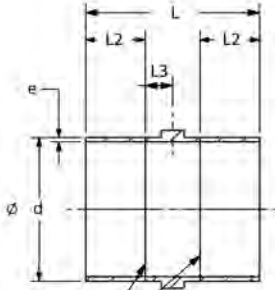
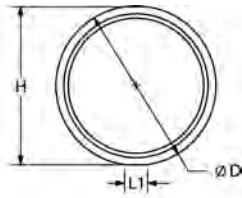
Instrument Installation Fitting, PN 10, PVDF-HP



d (mm)	FM	Part No.	USD	D (mm)	e (mm)	H (mm)	L (mm)	L1 (mm)	L2 (mm)
200	IR	* 735 918 569	2,154.40	231	6.2	228	110	40	32



B

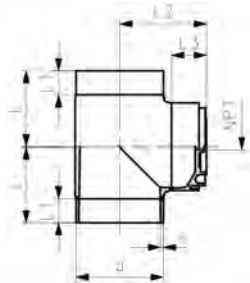


LOCATION OF WELD BEAD FROM CUSTOM MANUFACTURING

Instrument Installation Fitting, PN 10, PVDF-HP

d (mm)	Part No.	USD	D (mm)	e (mm)	H (mm)	L (mm)	L1 (mm)	L2 (mm)	L3 (mm)
250	* 155 918 571	3,411.40	278	7.7	275	301	40	103	48
315	* 155 918 572	3,613.47	338	9.7	336	301	40	103	50

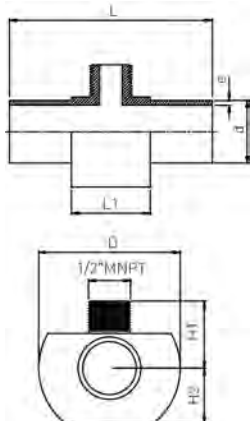
A



Instrument Installation Fitting, PN 10, PVDF-HP

d (mm)	NPT (inch)	FM	Part No.	USD	e (mm)	L (mm)	L1 (mm)	L2 (mm)	L3 (mm)
355	½	IR	* 735 918 849	Call	10.9	313	353	100	142
400	½	IR	* 735 918 850	Call	12.3	332	376	100	142
450	½	IR	* 735 918 851	Call	13.8	357	401	100	142

B



1/2" MNPT Low Profile Adaptor, PN 10, PVDF-HP

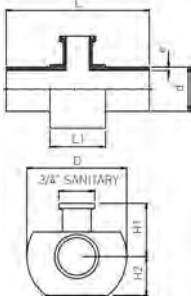
IR Plus/BCF Plus Fusion

d (mm)	FM	Part No.	USD	e (mm)	L (mm)	D (mm)	H1 (mm)	H2 (mm)	L1 (mm)
20	BCF, IR	* 735 918 626	627.98	1.9	140	71	28	29	40
25	BCF, IR	* 735 918 627	641.45	1.9	140	75	30	31	40
32	BCF, IR	* 735 918 628	722.28	2.4	140	81	34	35	40
40	BCF, IR	* 735 918 629	733.68	2.4	140	88	38	39	40
50	BCF, IR	* 735 918 630	803.11	3.0	140	97	43	44	40
63	BCF, IR	* 735 918 631	950.26	3.0	140	109	49	50	40
75	BCF, IR	* 735 918 632	1,109.84	3.6	140	120	55	56	40
90	BCF, IR	* 735 918 633	1,126.42	4.3	140	134	63	64	40
110	BCF, IR	* 735 918 634	1,344.04	5.3	140	153	73	74	40

B

3/4" (3A) Sanitary Adaptor, PN 10, PVDF-HP

IR Plus/BCF Plus Fusion
 3/4" size sanitary adapter port, i.e. 0.985" flange OD



d (mm)	FM	Part No.	USD	e (mm)	L (mm)	D (mm)	H1 (mm)	H2 (mm)	L1 (mm)
20	BCF, IR	* 735 918 646	641.45	1.9	140	71	28	29	40
25	BCF, IR	* 735 918 647	653.89	1.9	140	75	30	31	40
32	BCF, IR	* 735 918 648	733.68	2.4	140	81	34	35	40
40	BCF, IR	* 735 918 649	749.22	2.4	140	88	38	39	40
50	BCF, IR	* 735 918 650	815.54	3.0	140	97	43	44	40
63	BCF, IR	* 735 918 651	963.73	3.0	140	109	49	50	40
75	BCF, IR	* 735 918 652	1,122.28	3.6	140	120	55	56	40
90	BCF, IR	* 735 918 653	1,174.09	4.3	140	134	63	64	40
110	BCF, IR	* 735 918 654	1,354.40	5.3	140	153	73	74	40



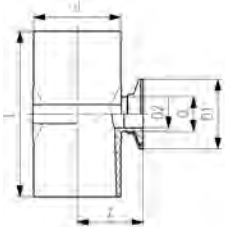
Sanitary Adapter Installation Fitting, PN 16, PVDF-HP

Model:

- Without chamfer, for complete drainability at sanitary connection
- d (mm) = main line
- D (mm) = connector line

Range of use:

- Pressure gauges
- Sampling valves
- Sanitary adapters



	FM	d (mm)	Part No.	USD	L (mm)	D (mm)	D2 (mm)	D1 (mm)	Z (mm)
*	BCF, IR	20	735 318 101	1,170.00	110	20	34.1	50.5	32.7
*	BCF, IR	25	735 318 202	1,170.00	110	25	34.1	50.5	35.2
*	BCF, IR	32	735 318 303	1,340.00	124	32	34.1	50.5	38.7
*	BCF, IR	40	735 318 204	1,390.00	124	25	19.9	50.5	42.7
*	BCF, IR	40	735 318 304	1,390.00	124	32	25.6	50.5	42.7
*	BCF, IR	50	735 318 205	1,560.00	124	25	19.9	50.5	47.7
*	BCF, IR	50	735 318 305	1,560.00	124	32	25.6	50.5	47.7
*	BCF, IR	50	735 318 505	1,580.00	124	50	42.2	64.0	47.7
	BCF, IR	63	735 318 206	650.00	120	25	19.9	50.5	54.2
	BCF, IR	63	735 318 306	650.00	120	32	25.6	50.5	54.2
*	BCF, IR	63	735 318 506	1,520.00	120	50	42.2	64.0	54.2
*	BCF, IR	63	735 318 606	1,690.00	138	63	55.1	77.5	54.2
	BCF, IR	75	735 318 207	685.00	130	25	19.9	50.5	60.2
	BCF, IR	75	735 318 307	685.00	130	32	25.6	50.5	60.2
	BCF, IR	75	735 318 507	685.00	130	50	42.2	64.0	60.2
*	BCF, IR	75	735 318 607	1,390.00	130	63	55.1	77.5	60.2
	BCF, IR	90	735 318 208	730.00	130	25	19.9	50.5	67.7
	BCF, IR	90	735 318 308	730.00	130	32	25.6	50.5	67.7
	BCF, IR	90	735 318 508	730.00	130	50	42.2	64.0	67.7
	BCF, IR	90	735 318 608	730.00	138	63	55.1	77.5	67.7
	BCF, IR	110	735 318 209	880.00	130	25	19.9	50.5	77.7
	BCF, IR	110	735 318 309	880.00	130	32	25.6	50.5	77.7
	BCF, IR	110	735 318 509	880.00	130	50	42.2	64.0	77.7
	BCF, IR	110	735 318 609	880.00	180	63	55.1	77.5	109.0

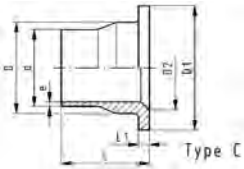
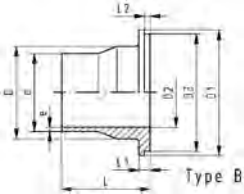
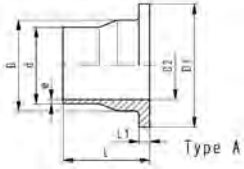
A

Flange Adapter, PN 16, PVDF-HP



Note:

Size 160 mm with 240 PSI / PN 16 pressure rating is approved for and should only be used for hot UPW. 40 mm fittings are for tool installation only.



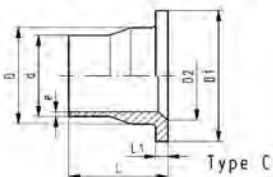
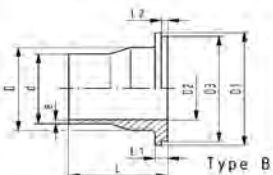
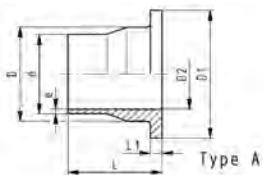
d (mm)	Part No.	USD	weight (kg)	Type	L1 (mm)	D (mm)	D2 (mm)	e (mm)	D1 (mm)	L (mm)
20	735 798 831	12.95	0.029	A	6	26	15	1.9	45	54
25	735 798 882	15.34	0.043	A	7	32	20	1.9	54	56
32	735 798 883	15.34	0.063	A	7	40	26	2.4	63	58
40	^ 735 798 884	23.52	0.089	A	8	49	34	2.4	73	68
50	735 798 885	29.43	0.140	A	8	60	43	3.0	82	69
63	735 798 836	45.91	0.237	A	9	75	56	3.0	102	72
75	^ 735 798 837	108.81	0.361	A	10	89	66	3.6	122	80
90	735 798 886	143.01	0.435	A	12	105	78	4.3	133	81
110	735 798 839	243.52	0.626	C	13	125	100	5.3	158	81
160	735 798 842	Call	1.208	C	17	175	151	7.7	212	93
200	735 798 844	Call	2.139	C	22	232	207	9.6	268	102
225	* 735 798 845	Call	2.210	C	22	235	207	10.8	268	102
250	* 735 798 846	Call	3.658	C	25	285	249	11.9	320	122
315	* 735 798 848	Call	5.028	C	28	335	300	15.0	370	124

A

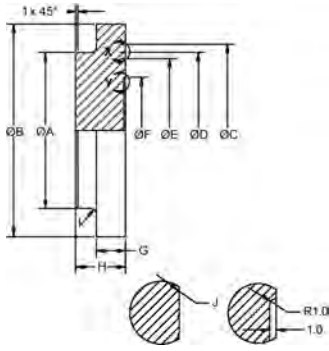
Flange Adaptor, PN 10, ANSI Serrated, PVDF-HP



d (mm)	FM	Part No.	USD	D (mm)	D1 (mm)	D2 (mm)	D3 (mm)	e (mm)	L (mm)	L1 (mm)	L2 (mm)	Type
90	BCF, IR	^ 735 798 888	130.57	105	138	78	133	2.8	81	12	4	B
110	BCF, IR	^ 735 798 889	189.64	125	158	100		3.4	81	13		A
160	IR	735 798 892	965.80	175	212	151		4.9	93	17		C
200	IR	^ 735 798 894	1,307.77	232	268	207		6.2	102	22		C
225	IR	* 735 798 895	1,424.87	235	268	207		6.9	102	22		A
250	IR	^ 735 798 596	1,796.89	285	320	249		7.7	120	22		C
315	IR	^ 735 798 598	2,806.22	335	370	300		9.7	120	22		C



A

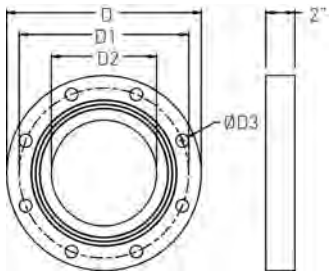


Blind Flange, PN 16/PN 10, PVDF-HP

Size	Part No.	USD	weight (lb)
20	735 991 362	136.79	0.046
25	735 991 363	146.11	0.068
32	735 991 364	165.80	0.104
40	^ 735 991 365	165.80	0.187
50	735 991 366	165.80	0.276
63	735 991 367	251.81	0.430
75	^ 735 991 368	327.46	0.648
90	735 991 369	517.10	0.961
110	735 991 370	517.10	1.457
160	^ 735 991 372	669.43	3.543
200/225	^ 735 991 373	1,559.59	7.824
250	* 735 991 374	Call	0.002
315	* 735 991 375	Call	0.002

Size	A (mm)	B (mm)	C (mm)	D (mm)	E (mm)	F (mm)	G (mm)	H (mm)	Rad I (mm)	Rad J (mm)
20	25	43	28	22		16	6	17	1.0	0.4
25	32	54	35	29		20	7	17	1.5	0.4
32	40	63	43	36		26	7	17	1.5	0.4
40	49	73	54	57		33	8	21	2.0	0.4
50	60	79	64	56		41	8	21	2.0	0.4
63	75	99	83	75	69	51	9	21	2.5	0.4
75	89	119	99	91	83	61	10	21	2.5	0.4
90	105	133	115	106	97	74	11	23	3.0	0.4
110	125	158	138	128	118	90	12	24	3.0	0.5
160	175	200	191	181	171	131	17	30	4.0	1.0
200/225	232	268	250	240	230	164	20	30	4.0	1.0
250	285	320	290	280	270	230	22	30	1.0	0.5
315	335	370	349	339	329		22	34		1.0

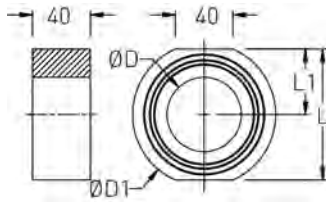
B



Full-Face Flange Spacer, PN 16, PVDF-HP

ANSI (inch)	Part No.	USD	D (mm)	D1 (mm)	D2 (mm)	D3 (mm)	# holes
4	* 735 991 340	Call	229	190	90	19	8
6	* 735 991 341	Call	285	241	131	22	8
8	* 735 991 342	Call	340	296	164	22	8
9	* 735 991 343	Call	340	296	184	22	8
10	* 735 991 344	Call	406	362	204	25	12
12	* 735 991 345	Call	483	432	258	25	12

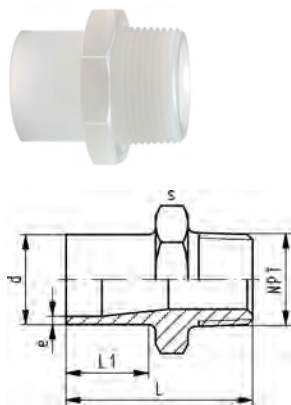
B



Wafer Blank, PN 16, PVDF-HP

d (mm)	Part No.	USD	L (mm)	L1 (mm)	D (mm)	D1 (mm)
50	735 991 860	Call	71	35	40	82
63	735 991 861	Call	94	47	51	102
75	735 991 862	Call	115	57	61	121
90	735 991 863	Call	127	63	73	133
110	735 991 864	646.63	153	76	90	158
160	735 991 865	Call	208	104	130	212
200	735 991 866	Call	265	132	163	268
225	735 991 867	Call	265	132	184	268
250	735 991 868	Call	317	158	204	320
315	735 991 869	Call	368	184	257	370

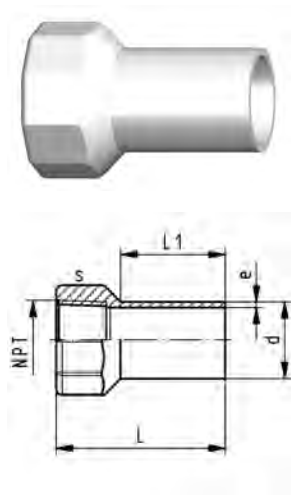
A



Male NPT Adaptor, PN 16, PVDF-HP

d (mm)	NPT (inch)	FM	Part No.	USD	e (mm)	L (mm)	L1 (mm)	s (mm)
20	¾	BCF, IR	735 914 306	85.91	1.9	53	28	32
25	¾	BCF, IR	735 914 307	101.14	1.9	55	28	36
32	1	BCF, IR	735 914 308	129.53	2.4	57	28	46
40	1 ¼	BCF, IR	735 914 309	180.31	2.4	60	28	55
50	1 ½	BCF, IR	735 914 310	232.12	3.0	63	28	65
63	2	BCF, IR	735 914 311	348.19	3.0	69	29	75

A



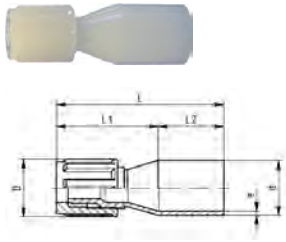
Female NPT Adaptor, PN 16, PVDF-HP

Model:

- With butt fusion spigot and NPT taper female thread
- Avoid stress when installing and large changes in temperature
- Connection to plastic thread only
- Do not apply solvent-based or other sealing compounds which could damage PVDF

d (mm)	NPT (inch)	FM	Part No.	USD	weight (kg)	e (mm)	L (mm)	s (mm)	L1 (mm)	
20	¾	BCF, IR	735 914 785	65.00	0.029	1.9	54	32	30	
20	½	BCF, IR	735 914 786	65.00	0.027	1.9	54	32	30	
25	¾	BCF, IR	735 914 787	72.00	0.033	1.9	58	38	30	
32	1	BCF, IR	735 914 788	122.00	0.066	2.4	63	48	30	
40	1 ¼	BCF, IR	735 914 789	133.00	0.085	2.4	67	58	30	
50	1 ½	BCF, IR	735 914 790	168.00	0.108	3.0	67	65	30	
*	63	2	BCF, IR	735 914 791	181.00	0.190	3.0	73	80	30

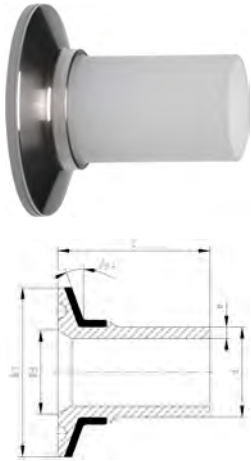
B



Flare Tube Adaptor, PN 10, PVDF-HP

d tube size (mm) (inch)	FM	Part No.	USD	e (mm)	L (mm)	L1 (mm)	L2 (mm)	D (mm)	
20	¼	BCF, IR	* 735 598 430	89.43	1.9	75	45	30	21
20	⅜	BCF, IR	* 735 598 431	92.95	1.9	76	46	30	23
20	½	BCF, IR	* 735 598 432	101.14	1.9	77	47	30	26
20	¾	BCF, IR	* 735 598 433	107.77	1.9	78	48	30	34
25	¼	BCF, IR	* 735 598 435	107.77	1.9	75	45	30	21
25	⅜	BCF, IR	* 735 598 436	107.77	1.9	76	46	30	23
25	½	BCF, IR	* 735 598 437	115.03	1.9	77	47	30	26
25	¾	BCF, IR	* 735 598 438	121.24	1.9	78	48	30	34
25	1	BCF, IR	* 735 598 439	132.64	1.9	87	57	30	46
32	½	BCF, IR	* 735 598 442	144.04	2.4	77	47	30	26
32	¾	BCF, IR	* 735 598 443	151.30	2.4	78	48	30	34
32	1	BCF, IR	* 735 598 444	158.55	2.4	87	57	30	46

A

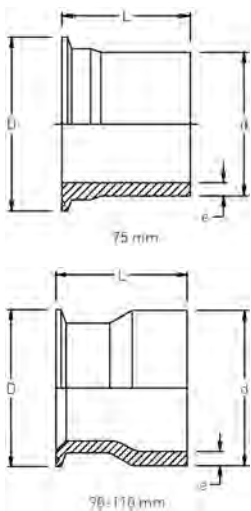


Sanitary Adaptor, PN 16, ASME BPE, PVDF-HP

Supplied with stainless steel backing ring

d Size (mm) (inch)	FM	Part No.	USD	e (mm)	D1 (mm)	D3 (mm)	L (mm)	
20	¾	BCF, IR	735 598 357	162.69	1.9	25	16.20	49
25	1	BCF, IR	735 598 359	168.91	1.9	51	22.40	55
32	1 ½	BCF, IR	735 598 362	172.02	2.4	51	34.90	57
40	1 ½	BCF, IR	735 598 365	178.24	2.4	51	35.50	57
50	2	BCF, IR	735 598 367	194.82	3.0	64	47.70	68
63	2 ½	BCF, IR	735 598 369	208.29	3.0	78	59.90	71

B



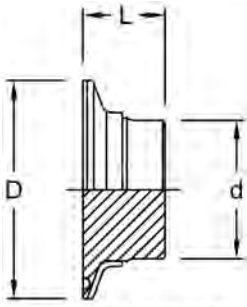
Large Sanitary Adaptor, PN 6, PVDF-HP

Does not use a Sanitary Backing Ring

d Tube (3A) (mm) (inch)	FM	Part No.	USD	weight (lb)	e (mm)	D (mm)	L (mm)	
75	3	BCF, IR	* 735 598 370	379.27	0.057	3.6	91	67
90	3	BCF, IR	* 735 598 371	407.25	0.472	4.3	91	76
110	4	BCF, IR	* 735 598 372	487.05	0.683	5.3	119	76

B

Sanitary Blank, PN 16/PN 6, PVDF-HP

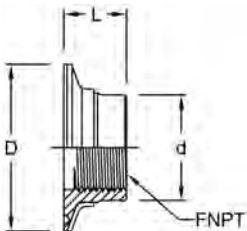


3/4", 3" and 4" do not include SS backing rings

Tube (3A) (inch)	PN (bar)	Part No.	USD	D (mm)	d (mm)	L (mm)
3/4	16	* 735 992 390	223.83	25	20	13
1 & 1 1/2	16	* 735 992 391	232.12	51	32	19
2	16	* 735 992 392	241.45	64	50	19
2 1/2	16	* 735 992 393	268.39	78	63	19
3	6	* 735 992 394	268.39	91	75	19
4	6	* 735 992 395	338.86	117	103	25

B

Sanitary Instrument Adaptor, PN 16/PN 6, PVDF-HP

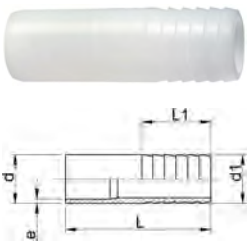


3/2", 3" and 4" do not include SS backing rings

Tube (3A) (inch)	FNPT (inch)	PN	Part No.	USD	D (mm)	d (mm)	L (mm)
3/4	1/4	16	* 735 992 400	328.50	25	20	13
1	1/4	16	* 735 992 401	337.82	51	40	19
1	3/8	16	* 735 992 402	337.82	51	40	19
1 1/2	1/4	16	* 735 992 403	337.82	51	40	19
1 1/2	1/2	16	* 735 992 404	337.82	51	40	19
1 1/2	3/4	16	* 735 992 405	337.82	51	40	19
2	1/4	16	* 735 992 406	346.11	64	50	19
2	1/2	16	* 735 992 407	346.11	64	50	19
2	3/4	16	* 735 992 408	346.11	64	50	19
2	1	16	* 735 992 409	346.11	64	50	19
2 1/2	1/4	16	* 735 992 410	365.80	78	63	19
2 1/2	1/2	16	* 735 992 411	365.80	78	63	19
2 1/2	3/4	16	* 735 992 412	365.80	78	63	19
2 1/2	1	16	* 735 992 413	365.80	78	63	19
3	1/4	6	* 735 992 414	373.06	91	75	19
3	1/2	6	* 735 992 415	373.06	91	75	19
3	3/4	6	* 735 992 416	373.06	91	75	19
3	1	6	* 735 992 417	373.06	91	75	19
4	1/4	6	* 735 992 418	443.52	117	103	25
4	1/2	6	* 735 992 419	443.52	117	103	25
4	3/4	6	* 735 992 420	443.52	117	103	25
4	1	6	* 735 992 421	443.52	117	103	25

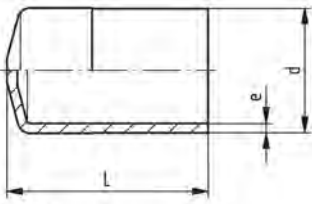
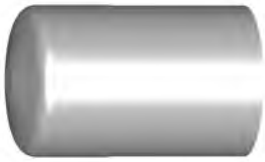
B

Hose Adaptor, PN 16, PVDF-HP

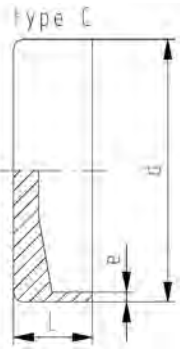
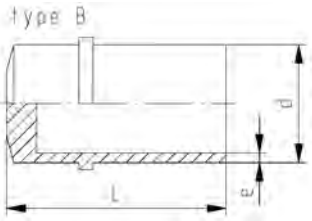


d - d1 (mm)	FM	Part No.	USD	e (mm)	L (mm)	L1 (mm)
20 - 20	BCF, IR	* 735 968 731	51.81	1.9	64	27
25 - 25	BCF, IR	* 735 968 732	42.38	1.9	75	36
32 - 32	BCF, IR	* 735 968 733	65.91	2.4	82	36
40 - 40	BCF, IR	* 735 968 734	89.43	2.4	84	42
50 - 50	BCF, IR	* 735 968 735	112.95	3.0	90	48
63 - 60	BCF, IR	* 735 968 736	137.82	3.0	100	50

A



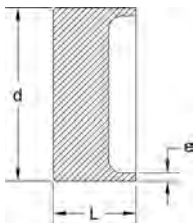
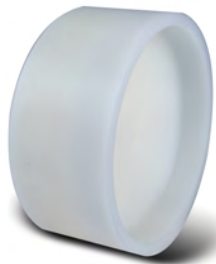
Type A



Cap, PN 16, PVDF-HP

d (mm)	FM	PN (bar)	Part No.	USD	weight (lb)	L (mm)	Type	e (mm)
20	BCF, IR	16	735 968 106	91.71	0.037	47	A	1.9
25	BCF, IR	16	735 968 107	100.00	0.026	47	A	1.9
32	BCF, IR	16	735 968 108	120.21	0.075	52	A	2.4
40	BCF, IR	16	735 991 654	203.11	0.150	59	B	2.4
50	BCF, IR	16	735 991 655	283.94	0.229	64	B	3.0
63	BCF, IR	16	735 991 656	349.22	0.364	69	B	3.0

B



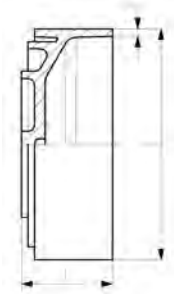
Flush End Cap (Machined), PN 16/PN 10, PVDF-HP

Add "T" to end of part number and fee to list price for each factory milled thread (max. diameter is 3/4"). See published price list for fee.

d (mm)	FM	PN	Part No.	USD	e (mm)	L (mm)
20	IR	16	* 735 992 680	129.53	1.9	30
25	IR	16	* 735 992 681	129.53	1.9	30
32	IR	16	* 735 992 682	129.53	2.4	30
40	IR	16	* 735 992 683	178.24	2.4	30
50	IR	16	* 735 992 684	178.24	3.0	30
63	IR	16	* 735 992 685	178.24	3.0	30
75	IR	16	* 735 992 686	178.24	3.6	30
90	IR	16	* 735 992 687	203.11	4.3	36
110	IR	16	* 735 992 688	243.52	5.3	38
160	IR	10	* 735 992 690	458.03	4.9	42
200	IR	10	* 735 992 691	916.06	6.2	45
225	IR	10	* 735 992 692	1,010.36	6.9	50

A

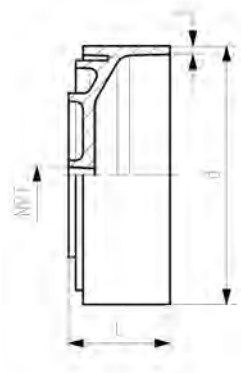
Cap, PN 10, PVDF-HP



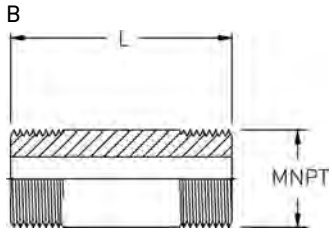
d (mm)	FM	Part No.	USD	e (mm)	L (mm)
250	IR	* 735 968 546	715.03	7.7	114
315	IR	* 735 968 548	1,102.59	9.7	130
355	IR	* 735 968 549	8,126.42	10.9	150
400	IR	* 735 968 550	11,067.36	12.3	150
450	IR	* 735 968 551	14,808.29	13.8	150

A

Cap, female thread NPT, PN 10, PVDF-HP



d (mm)	NPT (inch)	FM	Part No.	USD	e (mm)	L (mm)
250	½	IR	* 735 968 625	872.54	7.7	114
315	½	IR	* 735 968 635	1,343.01	9.7	130



Nipple, PN 10, PVDF-HP

Male NPT (inch)	L (inch)	Part No.	USD
½	2	* 735 992 350	164.77
½	3	* 735 992 351	167.88
½	4	* 735 992 352	168.91
¾	2	* 735 992 353	167.88
¾	3	* 735 992 354	169.95
¾	4	* 735 992 355	176.17
1	2	* 735 992 356	176.17
1	3	* 735 992 357	180.31
1	4	* 735 992 358	189.64
1 ¼	3	* 735 992 359	186.53
1 ¼	4	* 735 992 360	193.78
1 ½	3	* 735 992 361	193.78
1 ½	4	* 735 992 362	198.96
2	3	* 735 992 363	231.09
2	4	* 735 992 364	249.74

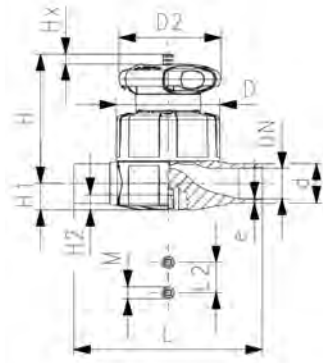
Manual Valves

A



Type 515 Diaphragm Valve SYGEF Plus PVDF
Butt fusion spigots metric

d (mm)	PTFE/EPDM Part No.	USD
20	181 515 132	477.00
25	181 515 133	509.00
32	181 515 134	589.00
40	181 515 135	809.00
50	181 515 136	978.00
63	181 515 137	1,284.00



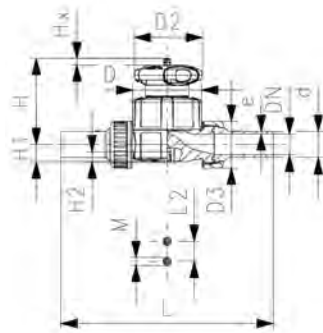
d (mm)	D (mm)	D2 (mm)	H (mm)	H1 (mm)	H2 (mm)	L (mm)	L2 (mm)	M	Lift = Hx (mm)	e (mm)	closest inch (inch)
20	65	65	73	14	12	124	25	M6	7	1.9	1/2
25	80	65	81	18	12	144	25	M6	10	1.9	3/4
32	88	87	107	22	12	155	25	M6	13	2.4	1
40	101	87	115	26	15	176	45	M8	15	2.4	1 1/4
50	117	135	148	32	15	193	45	M8	19	3.0	1 1/2
63	144	135	166	39	15	223	45	M8	25	3.0	2

A



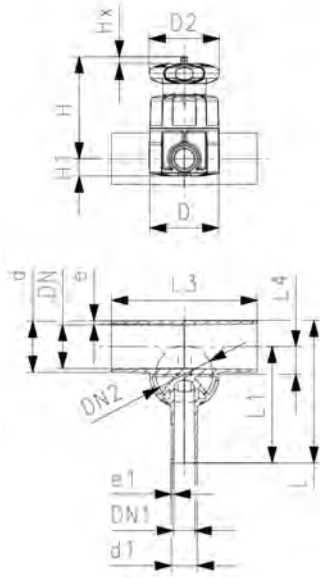
Type 514 Diaphragm Valve SYGEF Plus PVDF
Butt fusion spigots metric

d (mm)	PTFE/EPDM Part No.	USD	PTFE/FKM Part No.	USD	weight (lb)
20	181 514 132	639.00	* 181 514 152	670.00	0.880
25	181 514 133	679.00	* 181 514 153	712.00	1.316
32	181 514 134	787.00	* 181 514 154	825.00	2.449
40	181 514 135	1,091.00	* 181 514 155	1,143.00	2.835
50	181 514 136	1,303.00	* 181 514 156	1,366.00	6.590
63	181 514 137	1,725.00	* 181 514 157	1,809.00	6.975



d (mm)	D (mm)	D2 (mm)	D3 (mm)	L (mm)	L2 (mm)	H (mm)	H1 (mm)	H2 (mm)	M	Lift = Hx (mm)	e (mm)	closest inch (inch)
20	65	65	43	196	25	73	14	12	M6	7	1.9	1/2
25	80	65	53	221	25	81	18	12	M6	10	1.9	3/4
32	88	87	60	234	25	107	22	12	M6	13	2.4	1
40	101	87	74	260	45	115	26	15	M8	15	2.4	1 1/4
50	117	135	82	284	45	148	32	15	M8	19	3.0	1 1/2
63	144	135	100	321	45	166	39	15	M8	25	3.0	2

A



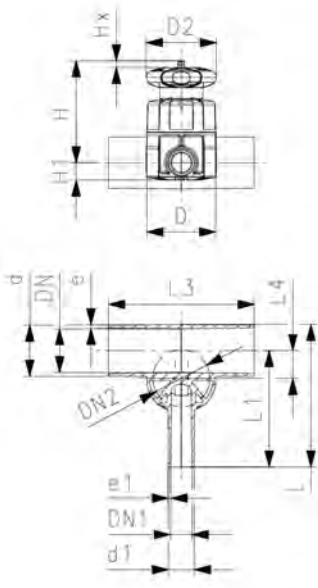
**Type 519 Zero Static Diaphragm Valve
SYGEF Plus PVDF
Butt fusion spigots metric**

d (mm)	d1 (mm)	Valve Size d (mm)	PN (bar)	PTFE/EPDM Part No.	USD	SP
20	20	20	10	^ 181 519 301	965.00	1
25	20	25	10	^ 181 519 303	980.00	1
25	25	25	10	^ 181 519 304	997.00	1
32	20	25	10	^ 181 519 307	997.00	1
32	25	25	10	^ 181 519 308	997.00	1
32	32	32	10	^ 181 519 309	1,009.00	1
40	20	32	10	^ 181 519 312	1,009.00	1
40	25	32	10	^ 181 519 313	1,056.00	1
40	32	32	10	^ 181 519 314	1,089.00	1
40	40	32	10	^ 181 519 315	1,135.00	1
50	20	25	10	^ 181 519 318	1,274.00	1
50	25	32	10	^ 181 519 319	1,384.00	1
50	32	32	10	^ 181 519 320	1,428.00	1
50	40	63	10	^ 181 519 321	1,445.00	1
50	50	63	10	^ 181 519 322	1,508.00	1
63	20	25	10	^ 181 519 325	1,554.00	1
63	25	32	10	^ 181 519 326	1,632.00	1
63	32	32	10	^ 181 519 327	1,708.00	1
63	40	63	10	^ 181 519 328	1,803.00	1
63	50	63	10	^ 181 519 329	1,803.00	1
63	63	63	10	^ 181 519 330	1,975.00	1
90	20	32	10	^ 181 519 341	2,454.00	1
90	25	32	10	^ 181 519 342	2,485.00	1
90	32	32	10	^ 181 519 343	2,547.00	1
90	50	63	10	^ 181 519 345	3,104.00	1
90	63	63	10	^ 181 519 346	3,454.00	1
110	20	32	10	^ 181 519 351	2,688.00	1
110	25	32	10	^ 181 519 352	2,780.00	1
110	32	32	10	^ 181 519 353	2,873.00	1
110	50	63	10	^ 181 519 355	3,416.00	1
110	63	63	10	^ 181 519 356	4,349.00	1

d (mm)	DN2 (mm)	DN1 (mm)	D2 (mm)	D (mm)	H (mm)	H1 (mm)	L (mm)	L1 (mm)	L3 (mm)	L4 (mm)	Lift = Hx (mm)	e (mm)	e1 (mm)
20	15	15	65	65	75	14.0	117	96	162	12	7	1.9	1.9
25	20	15	65	80	80	17.5	133	108	162	16	10	1.9	1.9
25	20	20	65	80	80	17.5	133	108	162	16	10	1.9	1.9
32	20	15	65	80	84	21.5	142	120	162	19	10	2.4	1.9
32	20	20	65	80	84	21.5	142	120	162	19	10	2.4	1.9
32	25	25	87	88	107	21.5	145	120	160	19	13	2.4	2.4
40	25	15	87	88	115	21.5	149	128	180	23	13	2.4	1.9
40	25	20	87	88	115	21.5	149	128	180	23	13	2.4	1.9
40	25	25	87	88	115	21.5	149	128	180	23	13	2.4	2.4
40	25	32	87	88	115	21.5	174	153	180	23	13	2.4	2.4
50	20	15	65	80	97	17.5	160	134	180	27	10	3.0	1.9
50	25	20	87	88	120	21.5	160	134	180	28	13	3.0	1.9
50	25	25	87	88	120	21.5	160	134	180	28	13	3.0	2.4
50	50	32	135	144	164	32.0	209	169	209	33	25	3.0	2.4
50	50	40	135	144	164	32.0	209	169	209	33	25	3.0	3.0
63	20	15	65	80	104	17.5	177	144	180	33	10	3.0	1.9
63	25	20	87	88	127	21.5	177	144	180	35	13	3.0	1.9
63	25	25	87	88	127	21.5	177	144	180	35	13	3.0	2.4
63	50	32	135	144	170	39.0	225	192	220	39	25	3.0	2.4
63	50	40	135	144	170	39.0	225	192	220	39	25	3.0	3.0
63	50	50	135	144	170	39.0	225	192	220	39	25	3.0	3.0
90	25	15	87	88	140	21.5	205	159	190	47	13	4.3	1.9
90	25	20	87	88	140	21.5	205	159	190	47	13	4.3	1.9

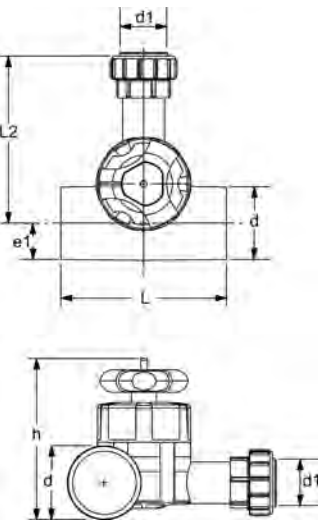
table continued on the next page

A



d	DN2	DN1	D2	D	H	H1	L	L1	L3	L4	Lift = Hx	e	e1
(mm)	(mm)	(mm)	(mm)	(mm)	(mm)	(mm)	(mm)	(mm)	(mm)	(mm)	(mm)	(mm)	(mm)
90	25	25	87	88	140	21.5	205	159	190	47	13	4.3	2.4
90	50	40	135	144	184	39.0	254	207	250	51	25	4.3	3.0
90	50	50	135	144	184	39.0	254	207	250	51	25	4.3	3.0
110	25	15	87	88	149	21.5	227	171	190	56	13	5.3	1.9
110	25	20	87	88	149	21.5	227	171	190	56	13	5.3	1.9
110	25	25	87	88	149	21.5	227	171	190	56	13	5.3	2.4
110	50	40	135	144	194	39.0	276	219	250	60	25	5.3	3.0
110	50	50	135	144	194	39.0	276	219	250	60	25	5.3	3.0

A

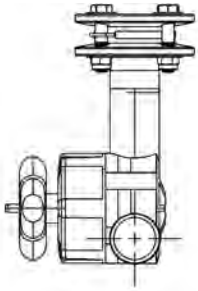


Lateral Valve with Union, PN10 PVDF-HP 5 series

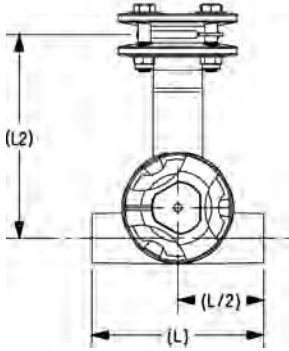
d	d1	Part No.	USD	SP weight	PN	L	L2	e1	h	psi at 73° F	
(mm)	(mm)			(lb)	(bar)	(mm)	(mm)	(mm)	(mm)	(psi)	
20	20	^ 735 994 525	1,236.27	1	1.146	10	162	118	10.0	85	150
25	20	^ 735 994 526	1,269.43	1	1.411	10	162	130	12.5	93	150
25	25	^ 735 994 527	1,281.87	1	1.455	10	162	132	12.5	93	150
32	20	* 735 994 529	1,258.03	1	1.543	10	162	142	16.0	100	150
32	25	^ 735 994 528	1,281.87	1	0.220	10	162	144	16.0	100	150
32	32	* 735 994 530	1,306.74	1	2.205	10	160	146	16.0	123	150
50	20	* 735 994 537	1,492.23	1	2.116	10	180	156	25.0	122	150
50	25	* 735 994 538	1,668.39	1	2.690	10	180	158	25.0	145	150
50	32	* 735 994 539	1,729.53	1	2.778	10	180	160	25.0	145	150
50	50	* 735 994 541	1,762.69	1	5.556	10	209	202	25.0	189	150
63	20	* 735 994 543	1,762.69	1	0.220	10	180	166	31.5	136	150
63	25	^ 735 994 544	1,917.10	1	2.910	10	180	168	31.5	159	150
63	32	* 735 994 545	2,015.54	1	2.998	10	180	170	31.5	159	150
63	50	* 735 994 547	2,301.55	1	0.002	10	220	225	31.5	202	150
63	63	* 735 994 548	2,363.73	1	0.002	10	220	227	31.5	202	150
90	20	* 735 994 558	2,655.96	1	3.836	10	190	181	45.0	185	150
90	25	* 735 994 559	2,818.65	1	3.880	10	190	183	45.0	185	150
90	32	* 735 994 560	2,933.68	1	3.616	10	190	185	45.0	185	150
90	50	* 735 994 562	3,575.13	1	8.245	10	250	240	45.0	229	150
90	63	* 735 994 563	4,352.33	1	0.002	10	250	242	45.0	229	150
110	20	* 735 994 566	2,888.08	1	0.002	10	190	193	55.0	204	150
110	25	* 735 994 567	3,089.12	1	4.542	10	190	195	55.0	204	150
110	32	* 735 994 568	3,204.15	1	0.002	10	190	197	55.0	204	150
110	50	* 735 994 570	3,904.66	1	9.039	10	250	252	55.0	249	150
110	63	* 735 994 571	4,468.39	1	0.002	10	250	254	55.0	249	150

A

Lateral Valve, PN10 PVDF-HP 5 series Flanged

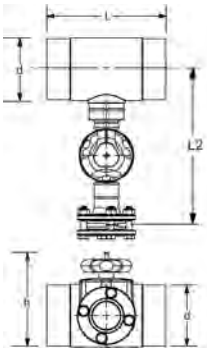


d (mm)	d1 (mm)	Part No.	USD	SP	PN (bar)	L (mm)	L2 (mm)	psi at 73° F (psi)
63	63	735 994 948	Call	1	10	220	261	150
90	63	735 994 963	Call	1	10	250	276	150
110	63	735 994 971	Call	1	10	250	288	150



A

Lateral Tee Valve 160mm x 63mm



d (mm)	d2 (mm)	Part No.	USD	SP	PN (bar)	L (mm)	L2 (mm)	h (mm)
160	63	155 994 900	Call	1	10	310	408	184

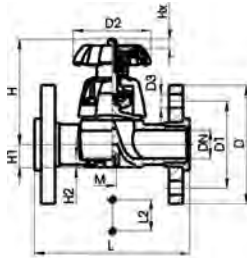
A

Type 317 Diaphragm Valve
SYGEF® Plus PVDF
Flanged

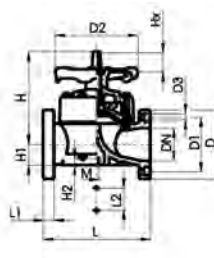


d (mm)	PTFE with EPDM supp. diaphragm Part No.	USD	weight (lb)
75	^ 175 317 568	2,240.00	12.566
90	^ 175 317 054	3,952.00	24.377
110	^ 175 317 355	6,057.00	32.959

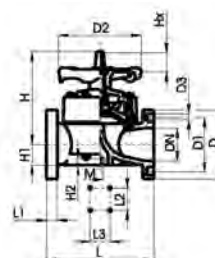
d (mm)	D (mm)	D1 (mm)	D2 (mm)	D3 (mm)	H (mm)	H1 (mm)	H2 (mm)	L (mm)	L1 (mm)	L2 (mm)	M	AL
75	185	140	152	18	201	46	15	290		70	M8	4
90	200	152	270	18	265	57	23	310	35	120	M12	8
110	225	191	270	18	302	68	23	350	35	120	M12	8



DN 15-65



DN 80-100



DN 150

B

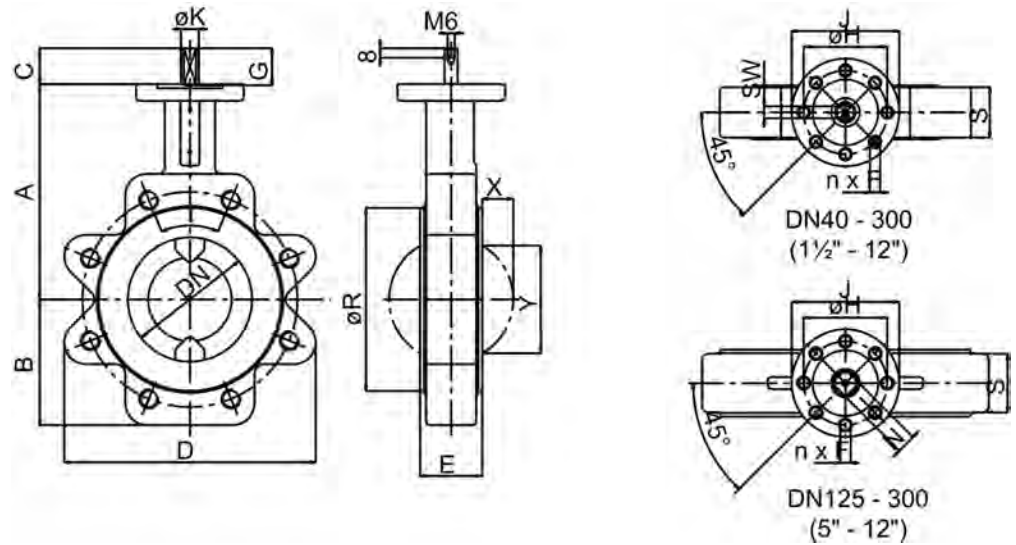
Butterfly Valve - Type 365



d (inch)	PN (bar)	Lever Op. Part No.	USD	Gear Op. Part No.	USD	SP	weight (lb)
2	10	* 160 365 318	1,862.00				
3	10	* 160 365 320	2,174.00	* 160 365 500	Call	1	17.637
4	10	* 160 365 321	2,298.00	* 160 365 501	Call	1	23.589
6	10	* 160 365 323	3,291.00	* 160 365 503	3,540.00	1	34.833
8/9	10			* 160 365 504	5,153.00	1	63.934
10	10			* 160 365 505	7,016.00	1	77.162
12	10			* 160 365 506	8,694.00	1	123.238
14	10			* 160 365 507	Call	1	144.623

d (inch)	Type	A (mm)	B (mm)	C (mm)	D (mm)	E (mm)	n x F	G (mm)	H (mm)	J (mm)	K (mm)	R (mm)	X (mm)	Y (mm)
2	F05	135	65	26	160	43	8 x dia 7	27	50	65	15	95	5	31
3	F07	160	93	29	188	46	8 x dia 9	30	70	90	15	132		69
4	F07	180	105	29	210	52	8 x dia 9	30	70	90	15	153	26	91
6	F07	210	140	46	269	56	8 x dia 9	47	70	90	20	209	48	143
8/9	F12	240	270	65	360	60	8 x dia 13	66	125	150	30	259	71	196
10	F12	275	205	65	435	68	8 x dia 13	66	125	150	30	309	91	243
12	F12	310	250	65	500	78	8 x dia 13	66	125	150	30	364	111	293
14	F12	330	255	25	534	78	8 x dia 28.6	32				412	126	304

d (inch)	N Square (mm)	SW (mm)	Weight (lb)
2		10	8
3		10	9
4		10	13
6	16/16		30
8/9	19/19		51
10	22/22		71
12	27/27		110
14	27/27		132

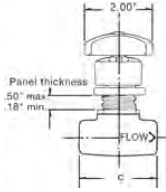


B

Needle Valve - Type 522 Globe Body, Female NPT



Size (inch)	Part No.	USD	weight (kg)	c (mm)
¼	* 150 900 117	238.00	0.120	58
½	* 150 900 122	238.00	0.120	65

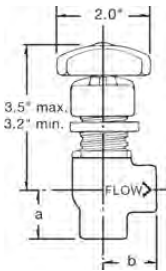


B

**Needle Valve - Type 522
Angle Body, Female NPT**

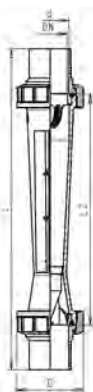


Size (inch)	Part No.	USD	weight (lb)	a (mm)	b (mm)
¼	* 150 900 113	183.00	1.411	25	28
½	* 150 900 120	183.00	0.265	28	31



Rotameters

C



Rotameter 335 special version PVDF-HP
Float in PTFE
With fusion spigots IR/BCF

Type	d (mm)	Scale range (l/h)	Scale range (gal/min)	Part No.	USD	SP
SK 11	32	100 - 999	0.44 - 4.40	* 198 335 160	468.00	1
SK 20	50	300 - 2998	1.32 - 13.20	* 198 335 161	782.00	1
SK 21	50	600 - 5996	2.64 - 26.40	* 198 335 162	782.00	1
SK 30*	63	999 - 7995	4.40 - 35.20	* 198 335 163	1,051.00	1
SK 31	63	1499 - 14990	6.60 - 66.00	* 198 335 164	1,051.00	1
SK 40	75	1999 - 19987	8.80 - 88.00	* 198 335 165	1,651.00	1
SK 41*	75	2998 - 29004	13.20 - 127.70	* 198 335 166	1,651.00	1

D (mm)	L (mm)	L2 (mm)	G (inch)
60	453	335	1 ½
83	466	335	2 ¼
83	466	335	2 ¼
103	472	335	2 ¾
103	472	335	2 ¾
122	495	335	3 ½
122	495	335	3 ½

C

Rotameter 807 special version PVDF-HP
Float in PTFE
With fusion spigots IR/BCF



Type	d (mm)	DN (mm)	Scale range (l/h)	Scale range (gal/min)	Taper tube in Polysulfone, FKM O-Rings Part No.	USD	weight (kg)
------	-----------	------------	----------------------	--------------------------	--	-----	----------------

SK 70	32	25	68 - 204	0.3 - 0.9	* 198 807 209	468.00	0.383
SK 71	32	25	90 - 295	0.4 - 1.3	* 198 807 210	468.00	0.387
SK 73	32	25	136 - 795	0.6 - 3.5	* 198 807 202	468.00	0.401

Type	D (mm)	L (mm)	L2 (mm)	G (inch)
------	-----------	-----------	------------	-------------

SK 70	60	318	200	1 ½
SK 71	60	318	200	1 ½
SK 73	60	318	200	1 ½

