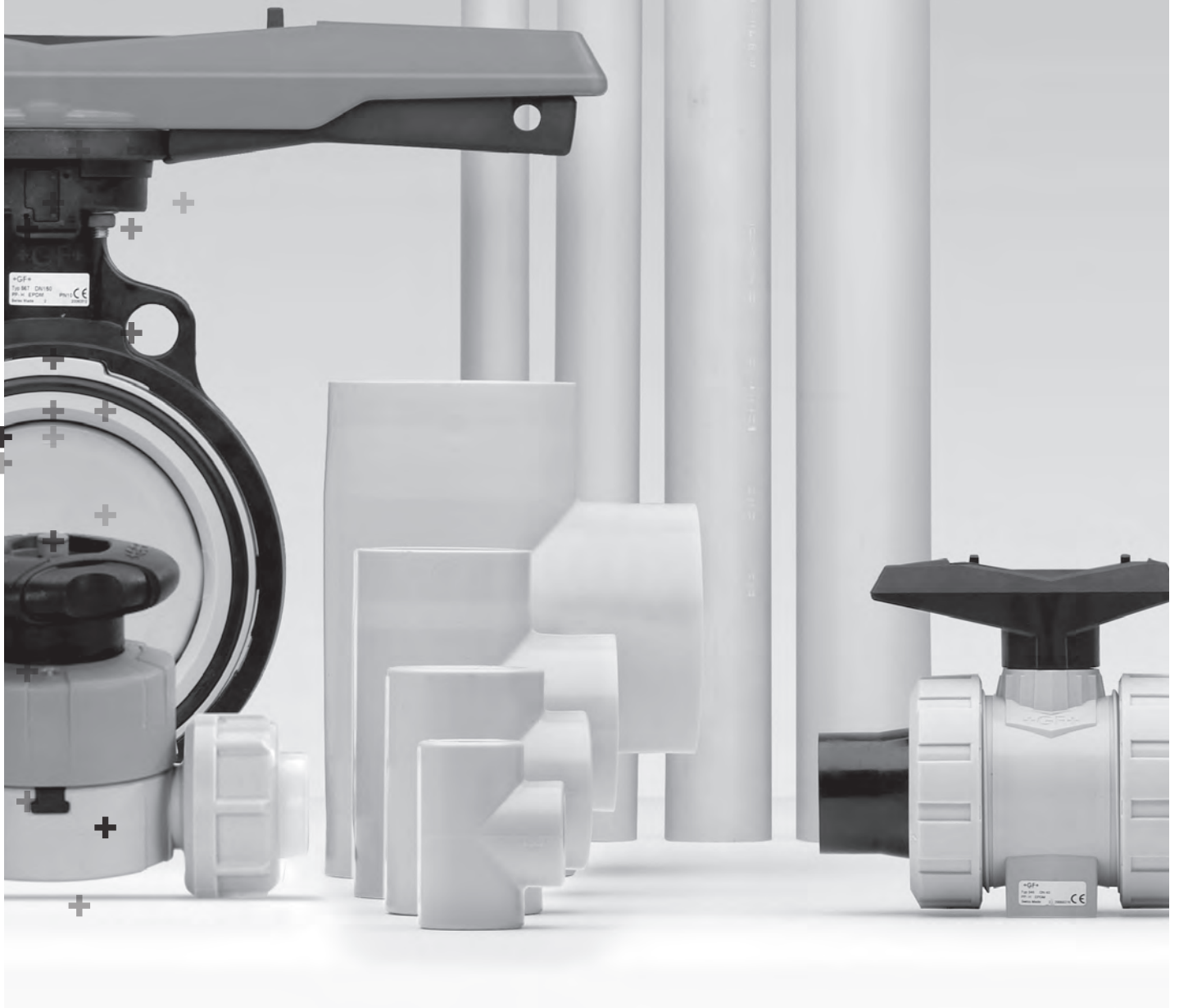


Section 1

# PROGEF<sup>®</sup> Standard PP Piping System



# PROGEF Standard – System Specification

<b>Material</b>	Beta PP-H 100 (Beta Polypropylene Homopolymer) d16 - d225	State-of-the-art PP (Polypropylene) d250 - d500
Color	RAL 7032 pebble grey	RAL 7032 pebble grey
Density	~0.90 g/cm <sup>3</sup> (ISO 1183 / ASTM D792)	~0.90 g/cm <sup>3</sup> (ISO 1183 / ASTM D792)
Surface tension	31 mJ/m <sup>2</sup>	24 mJ/m <sup>2</sup>
Linear expansion coefficient	0.16-0.18 mm/mK (DIN 53752)	0.16-0.18 mm/mK (DIN 53752)
E-modulus	1300 N/mm <sup>2</sup> (ISO 527 / ASTM D790)	900 N/mm <sup>2</sup> (ISO 527 / ASTM D790)
Thermal conductivity	0.23 W/mK (EN 12664)	0.23 W/mK (EN 12664)
Surface resistivity	> 10 <sup>16</sup> Ω (IEC 60093)	> 10 <sup>16</sup> Ω (IEC 60093)
<b>Dimension</b>	d16 – d500 in accordance to EN ISO 15494	
<b>Pressure Rating</b>	Pipes/Fittings/Diaphragm and ball valves: d16 – d225 SDR11, PN10 (150 PSI), c = 2.0 d50 – d225 SDR17.6, PN6 (90 PSI), c = 2.0 Butterfly valves: d63 – d315, PN10 (150 PSI)	Pipes/Fittings: d250 – d500 SDR11, PN10 (150 PSI), c = 2.0 d250 – d500 SDR17.6, PN6 (90PSI), c = 2.0
<b>Temperature Rating</b>	From 0 °C to 80 °C (32 °F – 176 °F)	
<b>Production</b>	Fittings: injection molded or segment welded Pipes: extruded Valves: injection molded	
<b>Marking</b>	All components are embossed with a permanent identification during the production process to ensure full traceability: Lot No Material Dimension Pressure Rating	
<b>Testing and Inspection</b> (EN ISO 15494)	Visual inspection Surface finish Dimension tolerance Pressure testing Full product range passed the Initial Type Test (ITT)	
<b>Material- and Product Approvals / Conformance<sup>(1)</sup></b>	FDA CFR 21 177.1520 NSF 61 NSF/ANSI 372 (G) USP 25 class VI (physiological non-toxic) DIBt (Z-40.23-4, Z-40.23-264, Z – 40.23-265) DNV (K-2630, K – 2636) Lloyd's Register (01/ 20030(E1))	
<b>Welding Technology</b>	Socket fusion (DVS 2207 - 11): d16 - d110 IR Plus, infrared fusion (DVS 2207 - 6): d20 - d225 Butt fusion (DVS 2207-11): d20 - d500	
<b>Documentation<sup>(2)</sup></b>	EN 10204 2.2 / EN 10204 3.1	
<b>Packing</b>	Pipes and fittings bulk bagged; quantities vary	
<b>Labeling</b>	Brand Name Product Description Code Number Material Dimension CE-labeling <sup>(3)</sup> Approvals	
<b>Main Applications</b>	Highly resistant to impact, abrasion and many chemicals make it ideal for slurries transportation in the semiconductor industry. Suitable for cost-effective distribution of DI-water and RO-water, as well as for industrial applications in chemical production, chemical distribution, plating, power stations, and cooling.	

<sup>(1)</sup> For thermoplastic material only

<sup>(2)</sup> On request

<sup>(3)</sup> From 2008 on



Pipe

62



IR Plus®/Butt Fusion Fittings

63



Socket Fusion Fittings

89



Electrofusion Fittings

97

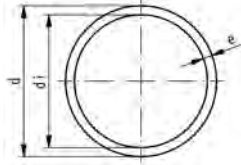


Manual Valves

98

# Pipe

A



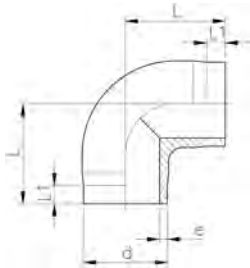
## Pipe, PN 10, Standard PP

Sizes 20-63 have multiple lengths of pipe per bag (20mm-6, 25mm-6, 32mm-8, 40mm-5, 50mm-3, 63mm-2) and are sold per bag. Sizes 75-225 pipe lengths are bagged individually. Sizes 250 and above are capped and individually bagged per pipe length.

<b>d</b> (mm)	<b>Part No.</b>	<b>USD / m</b>	<b>weight</b> (kg/m)	<b>lbs/meter</b>	<b>e</b> (mm)	<b>closest inch</b> (inch)
16	* 167 480 710	3.94	0.080	0.176	1.8	3/8
20	* 167 480 711	4.56	0.107	0.236	1.9	1/2
25	* 167 480 712	6.32	0.164	0.362	2.3	3/4
32	* 167 480 713	8.81	0.261	0.575	2.9	1
40	* 167 480 714	11.71	0.412	0.908	3.7	1 1/4
50	* 167 480 715	17.72	0.638	1.407	4.6	1 1/2
63	* 167 480 716	27.05	1.010	2.227	5.8	2
75	* 167 480 717	37.62	1.410	3.108	6.8	2 1/2
90	* 167 480 718	56.48	2.030	4.475	8.2	3
110	* 167 480 719	81.14	3.010	6.636	10.0	4
160	* 167 480 722	176.17	6.380	14.065	14.6	6
200	* 167 481 724	304.66	9.950	21.936	18.2	8
225	* 167 481 725	377.20	12.600	27.778	20.5	9
250	* 167 481 726	477.72	15.500	34.171	22.7	10
315	* 167 481 728	709.84	24.600	54.233	28.6	12
355	* 167 481 730	1,118.13	31.200	68.784	32.2	14
400	* 167 481 731	1,320.21	39.600	87.302	36.3	16
450	* 167 480 731	1,788.60	50.200	110.671	40.9	18
500	* 167 480 732	1,973.06	63.300	139.551	45.4	20

# IR Plus®/Butt Fusion Fittings

A



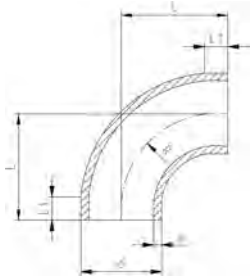
## 90° Elbow Short Radius, PN 10, Standard PP

### Model:

- Material: PP-H
- Conventional butt-welding according to DVS 2207
- IR = Infrared-(IR Plus®) compatible. Choose fusion parameters: PP-H

d (mm)	FM	Part No.	USD weight (kg)	L (mm)	L1 (mm)	e (mm)	
20	IR	<b>727 108 506</b>	<b>8.60</b>	0.008	38	25	1.9
25	IR	<b>727 108 507</b>	<b>9.43</b>	0.012	42	26	2.3
32	IR	<b>727 108 508</b>	<b>9.43</b>	0.022	46	27	2.9
40	IR	<b>^ 727 108 509</b>	<b>12.95</b>	0.045	51	22	3.7
50	IR	<b>727 108 510</b>	<b>17.72</b>	0.080	58	23	4.6
63	IR	<b>727 108 511</b>	<b>24.77</b>	0.138	66	21	5.8

A



## 90° Elbow Sweep Radius, PN 10, Standard PP

### Model:

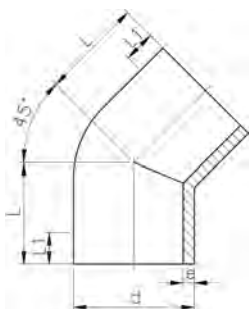
- Material: PP-H
- Conventional butt-welding according to DVS 2207
- IR = Infrared-(IR Plus®) compatible. Choose fusion parameters: PP-H

\* Material:PP-R

d (mm)	FM	Part No.	USD weight (kg)	L (mm)	L1 (mm)	R (mm)	e (mm)	
75	IR	<b>727 018 612</b>	<b>35.34</b>	0.232	100	20	90	6.8
90	IR	<b>727 018 613</b>	<b>49.43</b>	0.337	100	20	90	8.2
110	IR	<b>727 018 614</b>	<b>92.95</b>	0.701	141	25	130	10.0
160	IR	<b>727 018 617</b>	<b>212.44</b>	1.699	160	33	151	14.6
200	IR	<b>727 018 619</b>	<b>391.71</b>	3.264	200	33	190	18.2
225	IR	<b>* 727 018 620</b>	<b>482.90</b>	4.535	220	33	210	20.5
250		<b>* 727 018 521</b>	<b>921.24</b>	6.351	256	48	232	22.7
315		<b>* 727 018 523</b>	<b>1,646.63</b>	12.959	321	48	297	28.6
*	355	<b>727 018 524</b>	<b>Call</b>	16.400	345	70	330	32.2
*	400	<b>727 018 525</b>	<b>Call</b>	22.220	365	70	350	36.3
*	450	<b>727 018 526</b>	<b>Call</b>	32.560	425	70	400	40.9
*	500	<b>727 018 527</b>	<b>Call</b>	44.840	470	90	445	45.4

A

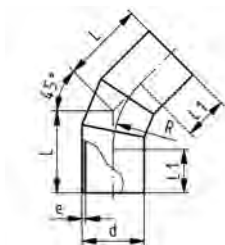
**45° Elbow, PN 10, Standard PP**



d (mm)	FM	Part No.	USD	L (mm)	L1 (mm)	e (mm)
20	IR	<b>727 158 506</b>	<b>14.72</b>	32	24.0	1.9
25	IR	<b>727 158 507</b>	<b>14.72</b>	34	25.0	2.3
32	IR	<b>727 158 508</b>	<b>18.86</b>	36	25.0	2.9
40	IR	<b>^ 727 158 509</b>	<b>22.38</b>	39	25.0	3.7
50	IR	<b>727 158 510</b>	<b>25.91</b>	42	26.0	4.6
63	IR	<b>727 158 511</b>	<b>42.38</b>	47	29.0	5.8
75	IR	<b>^ 727 158 512</b>	<b>60.00</b>	49	29.0	6.8
90	IR	<b>727 158 513</b>	<b>71.71</b>	57	34.0	8.2
110	IR	<b>727 158 514</b>	<b>132.64</b>	70	43.0	10.0
160	IR	<b>^ 727 158 517</b>	<b>286.01</b>	100	60.0	14.6
200	IR	<b>727 158 519</b>	<b>451.81</b>	124	75.0	18.2
225	IR	<b>* 727 158 520</b>	<b>495.34</b>	140	85.0	20.5
250		<b>* 727 158 521</b>	<b>1,290.16</b>	225	133.0	22.7
315		<b>* 727 158 523</b>	<b>1,620.73</b>	255	154.0	28.6

A

**45° Elbow, PN 10, Standard PP**



d (mm)	Part No.	USD	L (mm)	L1 (mm)	e (mm)	R (mm)
355	<b>* 727 158 524</b>	<b>2,359.59</b>	520	300	32.2	532.5
400	<b>* 727 158 525</b>	<b>3,045.60</b>	548	300	36.3	600.0
450	<b>* 727 158 526</b>	Call	580	300	40.9	675.0
500	<b>* 727 158 527</b>	Call	665	350	45.4	750.0

A

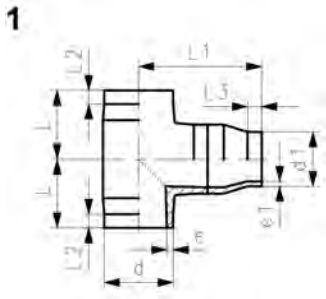
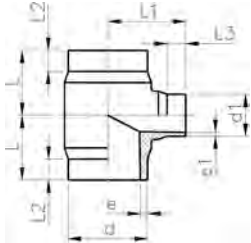


## Tee, PN 10, Standard PP

d (mm)	FM	Part No.	USD	weight (kg)	L (mm)	L1 (mm)	e (mm)
20	IR	<b>727 208 506</b>	<b>7.36</b>	0.011	38	24	1.9
25	IR	<b>727 208 507</b>	<b>7.36</b>	0.018	42	26	2.3
32	IR	<b>727 208 508</b>	<b>8.60</b>	0.032	46	26	2.9
40	IR	<b>^ 727 208 509</b>	<b>16.48</b>	0.062	51	23	3.7
50	IR	<b>727 208 510</b>	<b>22.38</b>	0.105	58	22	4.6
63	IR	<b>727 208 511</b>	<b>34.09</b>	0.186	66	20	5.8
75	IR	<b>^ 727 208 512</b>	<b>65.91</b>	0.293	75	20	6.8
90	IR	<b>727 208 513</b>	<b>95.23</b>	0.521	90	20	8.2
110	IR	<b>727 208 514</b>	<b>136.79</b>	0.928	110	20	10.0
160	IR	<b>^ 727 208 517</b>	<b>451.81</b>	2.844	160	28	14.6
200	IR	<b>727 208 519</b>	<b>706.74</b>	5.579	200	35	18.2
225	IR	<b>* 727 208 520</b>	<b>906.74</b>	7.812	220	35	20.5
250	--	<b>727 208 521</b>	<b>1,161.66</b>	10.400	227	68	22.7
315	--	<b>727 208 523</b>	<b>2,203.11</b>	20.330	283	86	28.6
355	--	<b>* 727 208 524</b>	<b>3,188.60</b>	31.100	345	105	32.2
400	--	<b>* 727 208 525</b>	<b>4,781.35</b>	40.900	365	105	36.3
450	--	<b>* 727 208 526</b>	<b>5,258.03</b>	60.300	425	135	40.9
500	--	<b>* 727 208 527</b>	<b>6,299.48</b>	81.900	470	155	45.4

A

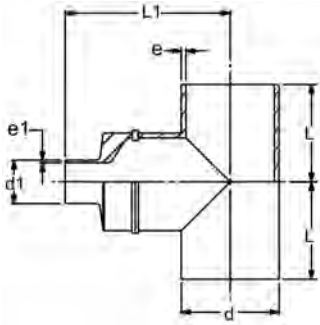
Molded Reducing Tee, PN 10, Standard PP



d (mm)	d1 (mm)	FM	Part No.	USD	weight (kg)	L (mm)	L1 (mm)	L2 (mm)	L3 (mm)	e (mm)	e1 (mm)
63	32	IR	^ 727 208 351	57.62	0.161	65	70	25	25	5.8	2.9
63	40	IR	^ 727 208 350	57.62	0.165	65	70	25	25	5.8	3.7
63	50	IR	^ 727 208 352	57.62	0.170	65	70	25	25	5.8	4.6
75	32	IR	^ 727 208 353	81.14	0.238	70	75	25	25	6.8	2.9
75	50	IR	^ 727 208 354	81.14	0.249	70	75	25	25	6.8	4.6
75	63	IR	^ 727 208 355	81.14	0.258	70	75	25	25	6.8	5.8
90	50	IR	^ 727 208 357	102.28	0.420	80	85	25	25	8.2	4.6
90	63	IR	^ 727 208 358	116.06	0.428	80	85	25	25	8.2	5.8
90	75	IR	^ 727 208 359	116.06	0.430	80	85	25	25	8.2	6.8
110	32	IR	^ 727 208 360	146.11	0.652	90	95	30	25	10.0	2.9
110	50	IR	^ 727 208 361	148.19	0.659	90	95	30	25	10.0	4.6
110	63	IR	^ 727 208 362	160.62	0.665	90	95	30	25	10.0	5.8
110	75	IR	^ 727 208 363	169.95	0.681	90	95	30	25	10.0	6.8
110	90	IR	^ 727 208 364	169.95	0.701	90	95	30	25	10.0	8.2
160	63	IR	^ 727 208 371	436.27	2.130	142	135	50	30	14.6	5.8
160	75	IR	^ 727 208 372	436.27	2.143	142	135	50	30	14.6	6.8
160	90	IR	^ 727 208 373	436.27	2.148	142	135	50	30	14.6	8.2
160	110	IR	^ 727 208 374	436.27	2.186	142	135	50	30	14.6	10.0
200	160	IR	727 208 385	Call	6.632	200	295	35	40	18.2	14.6
225	90	IR	^ 727 208 388	990.67	4.576	155	165	40	30	20.5	8.2
225	110	IR	^ 727 208 389	990.67	4.624	155	165	40	30	20.5	10.0
225	160	IR	^ 727 208 391	990.67	4.685	155	165	40	30	20.5	14.6
250	160		727 208 093	2,219.69	12.500	227	387	68	53	22.7	14.6



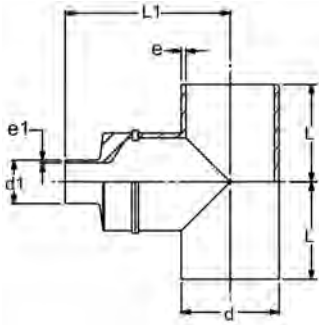
B



**Fabricated Reducing Tee (25-110mm), PN 10, Standard PP**

d (mm)	d1 (mm)	FM	Part No.	USD	e (mm)	e1 (mm)	L (mm)	L1 (mm)
25	20	IR	* 727 992 450	235.23	2.30	1.90	42	87
32	20	IR	* 727 992 451	236.27	3.00	1.90	46	91
32	25	IR	* 727 992 452	236.27	3.00	2.30	46	91
40	20	IR	* 727 992 453	249.74	3.70	1.90	51	98
40	25	IR	* 727 992 454	249.74	3.70	2.30	51	99
40	32	IR	* 727 992 455	249.74	3.70	3.00	51	99
50	20	IR	* 727 992 456	267.36	4.60	1.90	58	105
50	25	IR	* 727 992 457	267.36	4.60	2.30	58	106
50	32	IR	* 727 992 458	267.36	4.60	3.00	58	106
50	40	IR	* 727 992 459	267.36	4.60	3.70	58	108
63	20	IR	* 727 992 460	298.45	5.80	1.90	66	113
63	25	IR	* 727 992 461	298.45	5.80	2.30	66	113
63	32	IR	* 727 992 462	298.45	5.80	3.00	66	113
63	40	IR	* 727 992 463	298.45	5.80	3.70	66	115
63	50	IR	* 727 992 464	298.45	5.80	4.60	66	115
75	20	IR	* 727 992 465	405.18	6.90	1.90	75	128
75	25	IR	* 727 992 466	405.18	6.90	2.30	75	129
75	32	IR	* 727 992 467	405.18	6.90	3.00	75	130
75	40	IR	* 727 992 468	405.18	6.90	3.70	75	131
75	50	IR	* 727 992 469	405.18	6.90	4.60	75	132
75	63	IR	* 727 992 470	405.18	6.90	5.80	75	135
90	20	IR	* 727 992 471	480.83	8.20	1.90	90	148
90	25	IR	* 727 992 472	480.83	8.20	2.30	90	149
90	32	IR	* 727 992 473	480.83	8.20	3.00	90	150
90	40	IR	* 727 992 474	480.83	8.20	3.70	90	151
90	50	IR	* 727 992 475	480.83	8.20	4.60	90	152
90	63	IR	* 727 992 476	480.83	8.20	5.80	90	155
90	75	IR	* 727 992 477	480.83	8.20	6.90	90	149
110	20	IR	* 727 992 478	630.05	10.00	1.90	110	178
110	25	IR	* 727 992 479	630.05	10.00	2.30	110	179
110	32	IR	* 727 992 480	630.05	10.00	3.00	110	180
110	40	IR	* 727 992 481	630.05	10.00	3.70	110	181
110	50	IR	* 727 992 482	630.05	10.00	4.60	110	182
110	63	IR	* 727 992 483	630.05	10.00	5.80	110	185
110	75	IR	* 727 992 484	630.05	10.00	6.90	110	179
110	90	IR	* 727 992 485	630.05	10.00	8.20	110	179

B

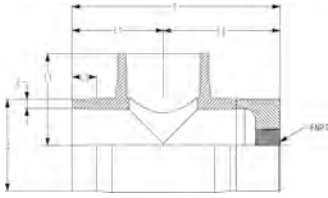


**Fabricated Reducing Tee (160-500mm), PN 10, Standard PP**

The L1 dimensions on sizes 250 mm and above are a maximum value; this dimension can be up to 44 mm less. Various fittings from 250mm and up with extreme reductions cannot be performed on all machines. If unsure please contact GF representative.

d (mm)	d1 (mm)	Part No.	USD	e (mm)	e1 (mm)	L (mm)	L1 (mm)
160	63	* 727 992 486	948.19	14.60	5.80	160	250
160	75	* 727 992 487	948.19	14.60	6.90	160	244
160	90	* 727 992 488	948.19	14.60	8.20	160	244
160	110	* 727 992 489	948.19	14.60	10.00	160	243
200	63	* 727 992 490	1,188.60	18.20	5.80	200	310
200	75	* 727 992 491	1,188.60	18.20	6.90	200	304
200	90	* 727 992 492	1,188.60	18.20	8.20	200	304
200	110	* 727 992 493	1,188.60	18.20	10.00	200	303
200	160	* 727 992 494	1,188.60	18.20	14.60	200	311
225	63	* 727 992 495	1,426.94	20.50	5.80	220	340
225	75	* 727 992 496	1,426.94	20.50	6.90	220	334
225	90	* 727 992 497	1,426.94	20.50	8.20	220	334
225	110	* 727 992 498	1,426.94	20.50	10.00	220	333
225	160	* 727 992 499	1,426.94	20.50	14.60	220	341
225	200	* 727 992 500	1,426.94	20.50	18.20	220	339
250	63	* 727 992 501	1,814.51	22.80	5.80	276	389
250	75	* 727 992 502	1,814.51	22.80	6.90	276	385
250	90	* 727 992 503	1,814.51	22.80	8.20	276	386
250	110	* 727 992 504	1,814.51	22.80	10.00	276	388
250	160	* 727 992 505	1,814.51	22.80	14.60	276	388
250	200	* 727 992 506	1,814.51	22.80	18.20	276	388
250	225	* 727 992 507	1,814.51	22.80	20.50	276	388
315	63	* 727 992 508	3,304.66	28.70	5.80	353	501
315	75	* 727 992 509	3,304.66	28.70	6.90	353	497
315	90	* 727 992 510	3,304.66	28.70	8.20	353	498
315	110	* 727 992 511	3,304.66	28.70	10.00	353	495
315	160	* 727 992 512	3,304.66	28.70	14.60	353	497
315	200	* 727 992 513	3,304.66	28.70	18.20	353	498
315	225	* 727 992 514	3,304.66	28.70	20.50	353	500
315	250	* 727 992 515	3,304.66	28.70	22.80	353	504
355	225	* 727 992 516	3,423.83	32.20	20.50	345	489
355	250	* 727 992 517	3,423.83	32.20	22.70	345	489
355	315	* 727 992 518	3,423.83	32.20	28.60	345	509
400	225	* 727 992 519	3,668.39	36.30	20.50	360	524
400	250	* 727 992 520	3,668.39	36.30	22.70	360	524
400	315	* 727 992 521	3,668.39	36.30	28.60	360	524
400	355	* 727 992 522	3,668.39	36.30	32.20	360	524
450	225	* 727 992 523	Call	40.90	20.50	419	593
450	250	* 727 992 524	Call	40.90	22.70	419	593
450	315	* 727 992 525	Call	40.90	28.60	419	593
450	355	* 727 992 526	Call	40.90	32.20	419	593
450	400	* 727 992 527	Call	40.90	36.30	419	593
500	225	* 727 992 528	Call	45.40	20.50	465	627
500	250	* 727 992 529	Call	45.40	22.70	465	627
500	315	* 727 992 530	Call	45.40	28.60	465	627
500	355	* 727 992 531	Call	45.40	32.20	465	627
500	400	* 727 992 532	Call	45.40	36.30	465	627
500	450	* 727 992 533	Call	45.40	40.90	465	627

B

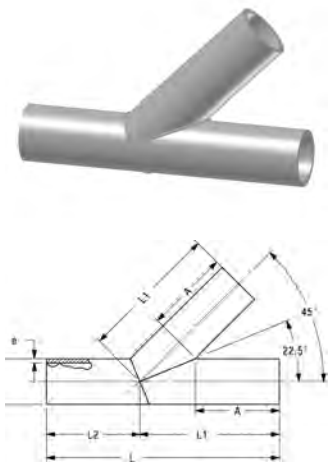


**Analytical Threaded Sensor, PN 10, Standard PP**

IR Plus/Butt Fusion

d (mm)	FNPT (inch)	FM	Part No.	USD	e (mm)	L (mm)	L1 (mm)	L2 (mm)	L3 (mm)
50	1/4	IR	* 727 991 840	262.18	4.6	135	58	77	22
50	1/2	IR	* 727 991 841	262.18	4.6	135	58	77	22
50	3/4	IR	* 727 991 842	262.18	4.6	135	58	77	22
50	1	IR	* 727 991 843	262.18	4.6	135	58	77	22
63	1/4	IR	* 727 991 844	299.48	5.8	148	66	82	20
63	1/2	IR	* 727 991 845	299.48	5.8	148	66	82	20
63	3/4	IR	* 727 991 846	299.48	5.8	148	66	82	20
63	1	IR	* 727 991 847	299.48	5.8	148	66	82	20
75	1/4	IR	* 727 991 848	334.72	6.8	171	75	96	20
75	1/2	IR	* 727 991 849	334.72	6.8	171	75	96	20
75	3/4	IR	* 727 991 850	334.72	6.8	171	75	96	20
75	1	IR	* 727 991 851	334.72	6.8	171	75	96	20
90	1/4	IR	* 727 991 852	378.24	8.2	208	90	118	20
90	1/2	IR	* 727 991 853	378.24	8.2	208	90	118	20
90	3/4	IR	* 727 991 854	378.24	8.2	208	90	118	20
90	1	IR	* 727 991 855	378.24	8.2	208	90	118	20
110	1/4	IR	* 727 991 856	444.56	10.0	244	110	134	20
110	1/2	IR	* 727 991 857	444.56	10.0	244	110	134	20
110	3/4	IR	* 727 991 858	444.56	10.0	244	110	134	20
110	1	IR	* 727 991 859	444.56	10.0	244	110	134	20

B

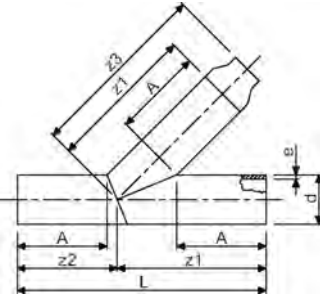


**45° Wye, Standard PP, PN 10**

Size (inch)	Part No.	USD	e (mm)	L (mm)	L1 (mm)	L2 (mm)	A (mm)
25	* 157 345 350	Call	2.3	225	125	100	95
50	* 157 345 050	315.03	4.6	371	210	161	150
63	* 157 345 063	449.74	5.8	389	226	163	150
75	* 157 345 075	471.50	6.9	406	241	165	150
90	* 157 345 090	486.01	8.2	527	309	218	200
110	* 157 345 110	509.84	10.0	555	333	222	200
160	* 157 345 160	669.43	14.6	626	393	233	200
200	* 157 345 200	986.53	18.2	783	491	292	250
225	* 157 345 225	1,024.87	20.5	818	522	296	250
250	* 157 345 250	1,164.77	22.8	954	602	352	300
315	* 157 345 315	1,812.44	28.7	1146	730	416	350

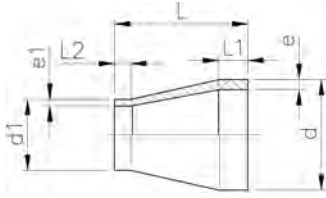
B

45° Reducing Wye, Standard PP, PN 10



	<b>d - d1</b> (mm)	<b>Part No.</b>	<b>USD</b>	<b>e1</b> (mm)	<b>e2</b> (mm)	<b>z1</b> (inch)	<b>z3</b> (inch)	<b>z2</b> (inch)	<b>A</b> (inch)
*	63 - 50	<b>* 157 445 100</b>	<b>479.79</b>	5.8	4.6	8.90	11.06	6.42	5.91
*	75 - 50	<b>* 157 445 105</b>	<b>501.55</b>	6.9	4.6	9.47	11.63	6.52	5.91
*	75 - 63	<b>* 157 445 106</b>	<b>501.55</b>	6.9	5.8	9.47	11.63	6.52	5.91
*	90 - 63	<b>* 157 445 112</b>	<b>507.77</b>	8.2	5.8	12.15	14.71	8.61	7.87
*	90 - 75	<b>* 157 445 113</b>	<b>507.77</b>	8.2	6.9	12.15	14.71	8.61	7.87
*	110 - 75	<b>* 157 445 120</b>	<b>519.17</b>	10.0	6.9	13.10	16.25	8.77	7.87
*	110 - 90	<b>* 157 445 121</b>	<b>519.17</b>	10.0	8.2	13.07	16.44	8.77	7.87
*	160 - 90	<b>157 445 122</b>	<b>Call</b>	14.6	8.2	15.48	23.27	9.18	7.87
*	160 - 110	<b>* 157 445 148</b>	<b>678.76</b>	14.6	10.0	15.48	19.80	9.18	7.87
*	200 - 160	<b>* 157 445 160</b>	<b>908.81</b>	18.2	14.6	19.35	24.65	11.47	9.84
*	225 - 110	<b>* 157 445 169</b>	<b>1,054.92</b>	20.5	10.0	20.54	26.44	11.68	9.84
*	225 - 160	<b>* 157 445 170</b>	<b>1,054.92</b>	20.5	14.6	20.54	26.44	11.68	9.84
*	225 - 200	<b>* 157 445 171</b>	<b>1,054.92</b>	20.5	18.2	20.54	26.44	11.68	9.84
*	250 - 160	<b>* 157 445 181</b>	<b>1,197.93</b>	22.8	14.6	23.69	30.98	13.85	11.81
*	250 - 225	<b>* 157 445 183</b>	<b>1,197.93</b>	22.8	20.5	23.69	30.47	13.85	11.81
*	315 - 225	<b>* 157 445 208</b>	<b>1,842.49</b>	28.7	20.5	28.75	33.48	16.35	13.78
*	315 - 250	<b>* 157 445 209</b>	<b>1,842.49</b>	28.7	22.8	28.75	32.27	16.35	13.78

A



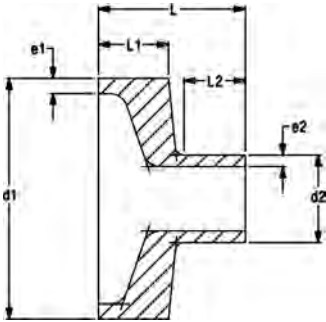
## Reducer, PN 10, Standard PP

d (mm)	d1 (mm)	FM	Part No.	USD	weight (kg)	L (mm)	L1 (mm)	L2 (mm)	e (mm)	e1 (mm)
25	20	IR	727 908 537	9.84	0.007	50	20	20	2.3	1.9
32	20	IR	727 908 542	13.47	0.010	50	20	20	2.9	1.9
32	25	IR	727 908 541	13.47	0.010	50	20	20	2.9	2.3
40	20	IR	^ 727 908 548	16.48	0.016	58	20	23	3.7	1.9
40	25	IR	^ 727 908 547	16.48	0.016	55	20	20	3.7	2.3
40	32	IR	^ 727 908 546	16.48	0.018	55	20	20	3.7	2.9
50	25	IR	727 908 554	20.00	0.024	60	20	20	4.6	2.3
50	32	IR	727 908 553	20.00	0.027	60	20	20	4.6	2.9
50	40	IR	^ 727 908 552	20.00	0.030	60	20	20	4.6	3.7
63	32	IR	727 908 560	22.38	0.043	65	20	20	5.8	2.9
63	40	IR	^ 727 908 559	22.38	0.047	65	20	20	5.8	3.7
63	50	IR	727 908 558	22.38	0.051	65	20	20	5.8	4.6
75	40	IR	727 908 566	29.43	0.062	68	20	20	6.8	3.7
75	50	IR	727 908 565	29.43	0.071	65	20	20	6.8	4.6
75	63	IR	727 908 564	29.43	0.075	65	20	20	6.8	5.8
90	63	IR	727 908 571	34.09	0.115	75	22	19	8.2	5.8
90	75	IR	727 908 570	34.09	0.130	75	22	19	8.2	6.8
110	63	IR	727 908 572	Call	0.201	90	28	28	10.6	6.2
110	75	IR	727 908 577	40.00	0.215	90	28	18	10.0	6.8
110	90	IR	727 908 576	40.00	0.225	90	28	30	10.0	8.2
160	110	IR	727 908 590	74.09	0.586	120	39	27	14.6	10.0
200	160	IR	727 908 592	272.54	1.149	145	50	40	18.2	14.6
225	110	IR	727 908 595	346.11	1.485	160	55	35	20.5	10.0
225	160	IR	727 908 596	286.01	1.590	160	55	40	20.5	14.6
225	180	IR	727 908 162	Call	1.770	163	60	58	20.5	16.4
225	200	IR	727 908 597	241.45	1.723	160	55	50	20.5	18.2
250	160		727 908 165	391.71	2.140	170	63	53	22.7	14.6
250	225		727 908 168	317.10	2.750	180	65	65	22.7	20.5
315	225		727 908 176	466.32	5.110	237	84	60	28.6	20.5
315	250		727 908 177	482.90	5.105	231	86	63	28.6	22.7
355	250		^ 727 908 963	1,289.12	5.490	245	90	60	32.3	22.7
355	315		^ 727 908 961	1,148.19	3.700	245	90	80	32.2	28.6
400	315		^ 727 908 966	3,524.35	5.300	260	95	80	36.3	28.6
400	355		^ 727 908 965	2,513.99	4.800	260	95	90	36.3	32.2
450	315		* 727 908 948	4,781.35	8.000	230	60	80	40.9	28.6
450	355		* 727 908 950	4,197.93	7.400	230	60	90	40.9	32.2
450	400		* 727 908 951	3,434.20	6.000	230	60	95	40.9	36.3
500	315		* 727 908 953	6,583.42	12.000	230	60	80	45.4	28.6
500	355		* 727 908 954	6,299.48	10.800	230	60	90	45.4	32.2
500	400		* 727 908 956	5,249.74	10.000	230	60	95	45.4	36.3
500	450		* 727 908 964	4,769.95	8.300	230	60	60	45.4	40.9

B

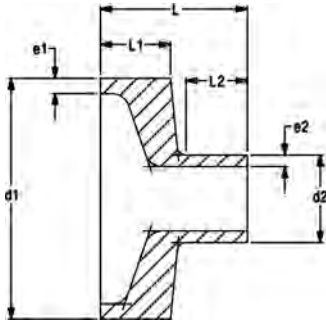
**Concentric Flush Style Reducer  
(40-110mm), PN 10, Standard PP**

IR Plus/Butt Fusion



d1 (mm)	d2 (mm)	FM	Part No.	USD	e1 (mm)	e2 (mm)	L (mm)	L1 (mm)	L2 (mm)
40	20	IR	* 727 909 604	134.72	3.7	1.9	52	24	25
40	25	IR	* 727 909 605	134.72	3.7	2.3	53	23	26
40	32	IR	* 727 909 606	134.72	3.7	3.0	53	22	26
50	20	IR	* 727 909 607	146.11	4.6	1.9	52	24	25
50	25	IR	* 727 909 608	146.11	4.6	2.3	53	23	26
50	32	IR	* 727 909 609	146.11	4.6	3.0	53	22	26
50	40	IR	* 727 909 610	146.11	4.6	3.7	55	21	28
63	20	IR	* 727 909 611	167.88	5.8	1.9	52	24	25
63	25	IR	* 727 909 612	167.88	5.8	2.3	52	23	26
63	32	IR	* 727 909 613	167.88	5.8	3.0	52	22	26
63	40	IR	* 727 909 614	167.88	5.8	3.7	54	20	28
63	50	IR	* 727 909 615	167.88	5.8	4.6	54	19	28
75	20	IR	* 727 909 616	238.34	6.9	1.9	58	27	25
75	25	IR	* 727 909 617	238.34	6.9	2.3	59	27	26
75	32	IR	* 727 909 618	238.34	6.9	3.0	60	27	26
75	40	IR	* 727 909 619	238.34	6.9	3.7	61	27	28
75	50	IR	* 727 909 620	238.34	6.9	4.6	62	27	28
75	63	IR	* 727 909 621	238.34	6.9	5.8	65	28	28
90	20	IR	* 727 909 622	279.79	8.2	1.9	63	32	25
90	25	IR	* 727 909 623	279.79	8.2	2.3	64	32	26
90	32	IR	* 727 909 624	279.79	8.2	3.0	65	32	26
90	40	IR	* 727 909 625	279.79	8.2	3.7	66	32	28
90	50	IR	* 727 909 626	279.79	8.2	4.6	67	32	28
90	63	IR	* 727 909 627	279.79	8.2	5.8	70	33	28
90	75	IR	* 727 909 628	279.79	8.2	6.9	64	31	23
110	20	IR	* 727 909 629	384.46	10.0	1.9	73	42	25
110	25	IR	* 727 909 630	384.46	10.0	2.3	74	42	26
110	32	IR	* 727 909 631	384.46	10.0	3.0	75	42	26
110	40	IR	* 727 909 632	384.46	10.0	3.7	76	42	28
110	50	IR	* 727 909 633	384.46	10.0	4.6	77	42	28
110	63	IR	* 727 909 634	384.46	10.0	5.8	80	43	28
110	75	IR	* 727 909 635	384.46	10.0	6.9	74	41	23
110	90	IR	* 727 909 636	384.46	10.0	8.2	74	39	23

B



**Concentric Flush Style Reducer  
(160-315mm), PN 10, Standard PP**

IR Plus/Butt Fusion

Welds on some fittings with extreme reductions cannot be performed on all machines. If unsure please contact GF representative.

<b>d1</b> (mm)	<b>d2</b> (mm)	<b>Part No.</b>	<b>USD</b>	<b>e1</b> (mm)	<b>e2</b> (mm)	<b>L</b> (mm)	<b>L1</b> (mm)	<b>L2</b> (mm)
160	63	* 727 909 656	417.62	15	6	95	58	28
160	75	* 727 909 657	417.62	15	7	89	56	23
160	90	* 727 909 658	417.62	15	8	89	54	23
160	110	* 727 909 659	417.62	15	10	88	50	23
200	75	* 727 909 663	447.67	18	7	109	76	23
200	90	* 727 909 664	447.67	18	8	109	74	23
200	110	* 727 909 665	447.67	18	10	108	70	23
200	160	* 727 909 668	447.67	18	15	116	61	33
225	63	* 727 909 669	788.60	21	6	125	88	28
225	75	* 727 909 670	788.60	21	7	119	86	23
225	90	* 727 909 671	788.60	21	8	119	84	23
225	110	* 727 909 672	788.60	21	10	118	80	23
225	160	* 727 909 675	788.60	21	15	126	71	33
225	200	* 727 909 676	788.60	21	18	124	64	33
250	63	* 727 909 677	868.39	23	6	119	85	28
250	75	* 727 909 678	868.39	23	7	115	80	23
250	90	* 727 909 679	868.39	23	8	116	80	23
250	110	* 727 909 680	868.39	23	10	118	80	28
250	160	* 727 909 683	868.39	23	15	118	70	38
250	200	* 727 909 684	868.39	23	18	118	67	38
250	225	* 727 909 685	868.39	23	21	118	64	38
315	63	* 727 909 696	1,763.73	29	6	154	100	28
315	75	* 727 909 697	1,763.73	29	7	150	100	23
315	90	* 727 909 698	1,763.73	29	8	151	100	23
315	110	* 727 909 699	1,763.73	29	10	148	100	23
315	160	* 727 909 702	1,763.73	29	15	148	100	23
315	200	* 727 909 703	1,763.73	29	18	151	100	33
315	225	* 727 909 704	1,763.73	29	21	153	99	33
315	250	* 727 909 705	1,763.73	29	23	157	86	48

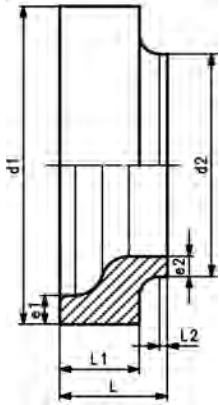
A



### Concentric Flush Style Reducer (355-500mm), PN 10, Standard PP

#### Model:

- Material: PP-H
- Flush style design
- Conventional butt-welding according to DVS 2207
- Clamping on the welding machine must always be done on the larger diameter (d1)
- The butt fusion machine must be suitable to weld both d1 and d2 dimensions



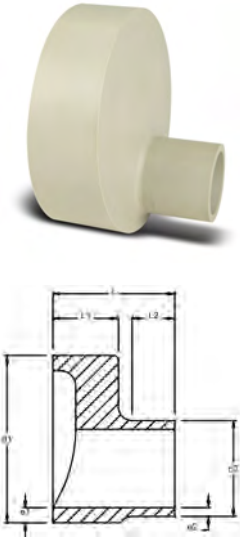
d1 (mm)	d2 (mm)	Part No.	USD weight (kg)	L (mm)	L1 (mm)	L2 (mm)	e1 (mm)	e2 (mm)	
355	225	* 727 909 809	2,201.04	4.983	130	95	10	32.2	20.5
355	250	* 727 909 810	2,201.04	3.574	115	80	10	32.2	22.7
355	315	* 727 909 812	2,201.04	3.952	115	80	15	32.2	28.6
400	225	* 727 909 816	3,021.76	7.587	145	110	10	36.3	20.5
400	250	* 727 909 817	3,021.76	6.955	140	105	10	36.3	22.7
400	315	* 727 909 819	3,021.76	6.149	135	100	10	36.3	28.6
400	355	* 727 909 820	3,021.76	5.811	135	100	13	36.3	32.2
450	225	* 727 909 822	4,978.24	11.398	165	125	10	40.9	20.5
450	250	* 727 909 823	4,978.24	10.561	160	120	10	40.9	22.7
450	315	* 727 909 825	4,978.24	8.660	150	110	15	40.9	28.6
450	355	* 727 909 826	4,978.24	8.246	150	110	15	40.9	32.2
450	400	* 727 909 827	4,978.24	7.973	150	110	15	40.9	36.3
500	225	* 727 909 829	7,031.09	15.293	180	130	10	45.4	20.5
500	250	* 727 909 830	7,031.09	15.037	180	130	10	45.4	22.7
500	315	* 727 909 832	7,031.09	10.404	165	115	10	45.4	28.6
500	355	* 727 909 833	7,031.09	10.785	165	115	10	45.4	32.2
500	400	* 727 909 834	7,031.09	11.863	165	115	10	45.4	36.3
500	450	* 727 909 835	7,031.09	12.042	165	115	25	45.4	40.9



B

**Eccentric Flush Style Reducer  
(40-110mm), PN 10, Standard PP**

IR Plus/Butt Fusion

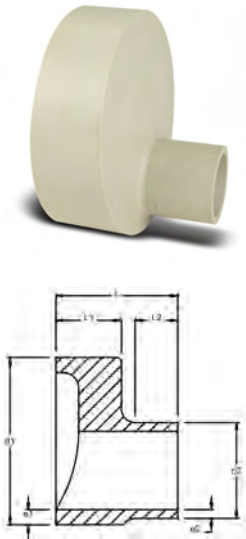


d1 (mm)	d2 (mm)	FM	Part No.	USD	e1 (mm)	e2 (mm)	L (mm)	L1 (mm)	L2 (mm)
40	20	IR	* 157 909 604	391.71	3.7	1.9	52	24	25
40	25	IR	* 157 909 605	391.71	3.7	2.3	53	23	26
40	32	IR	* 157 909 606	391.71	3.7	3.0	53	22	26
50	20	IR	* 157 909 607	403.11	4.6	1.9	52	24	25
50	25	IR	* 157 909 608	403.11	4.6	2.3	53	23	26
50	32	IR	* 157 909 609	403.11	4.6	3.0	53	22	26
50	40	IR	* 157 909 610	403.11	4.6	3.7	55	21	28
63	20	IR	* 157 909 611	403.11	5.8	1.9	52	24	25
63	25	IR	* 157 909 612	403.11	5.8	2.3	52	23	26
63	32	IR	* 157 909 613	403.11	5.8	3.0	52	22	26
63	40	IR	* 157 909 614	403.11	5.8	3.7	54	20	28
63	50	IR	* 157 909 615	403.11	5.8	4.6	54	19	28
75	20	IR	* 157 909 616	420.73	6.9	1.9	58	27	25
75	25	IR	* 157 909 617	420.73	6.9	2.3	59	27	26
75	32	IR	* 157 909 618	420.73	6.9	3.0	60	27	26
75	40	IR	* 157 909 619	420.73	6.9	3.7	61	27	28
75	50	IR	* 157 909 620	420.73	6.9	4.6	62	27	28
75	63	IR	* 157 909 621	420.73	6.9	5.8	65	28	28
90	20	IR	* 157 909 622	439.38	8.2	1.9	63	32	25
90	25	IR	* 157 909 623	439.38	8.2	2.3	64	32	26
90	32	IR	* 157 909 624	439.38	8.2	3.0	65	32	26
90	40	IR	* 157 909 625	439.38	8.2	3.7	66	32	28
90	50	IR	* 157 909 626	439.38	8.2	4.6	67	32	28
90	63	IR	* 157 909 627	439.38	8.2	5.8	70	33	28
90	75	IR	* 157 909 628	439.38	8.2	6.9	64	31	23
110	20	IR	* 157 909 629	446.63	10.0	1.9	73	42	25
110	25	IR	* 157 909 630	446.63	10.0	2.3	74	42	26
110	32	IR	* 157 909 631	446.63	10.0	3.0	75	42	26
110	40	IR	* 157 909 632	446.63	10.0	3.7	76	42	28
110	50	IR	* 157 909 633	446.63	10.0	4.6	77	42	28
110	63	IR	* 157 909 634	446.63	10.0	5.8	80	43	28
110	75	IR	* 157 909 635	446.63	10.0	6.9	74	41	23
110	90	IR	* 157 909 636	446.63	10.0	8.2	74	39	23

B

**Eccentric Flush Style Reducer  
(160-315mm), PN 10, Standard PP**

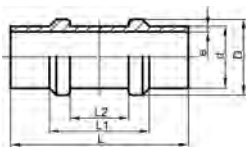
IR Plus/Butt Fusion



d1 (mm)	d2 (mm)	FM	Part No.	USD	e1 (mm)	e2 (mm)	L (mm)	L1 (mm)	L2 (mm)
160	63	IR	* 157 909 656	482.90	14.6	5.8	95	58	28
160	75	IR	* 157 909 657	482.90	14.6	6.9	89	56	23
160	90	IR	* 157 909 659	482.90	14.6	8.2	89	54	23
160	110	IR	* 157 909 662	482.90	14.6	10.0	88	50	23
200	63	IR	* 157 909 663	617.62	18.2	5.8	115	78	28
200	75	IR	* 157 909 664	617.62	18.2	6.9	109	76	23
200	90	IR	* 157 909 706	617.62	18.2	8.2	109	74	23
200	110	IR	* 157 909 665	617.62	18.2	10.0	108	70	23
200	160	IR	* 157 909 666	617.62	18.2	14.6	116	61	33
225	63	IR	* 157 909 667	635.23	20.5	5.8	125	88	28
225	75	IR	* 157 909 668	635.23	20.5	6.9	119	86	23
225	90	IR	* 157 909 669	635.23	20.5	8.2	119	84	23
225	110	IR	* 157 909 670	635.23	20.5	10.0	118	80	23
225	160	IR	* 157 909 671	635.23	20.5	14.6	126	71	33
225	200	IR	* 157 909 672	635.23	20.5	18.2	124	64	33
250	63	IR	* 157 909 677	781.35	22.8	5.8	119	85	28
250	75	IR	* 157 909 678	781.35	22.8	6.9	115	80	23
250	90	IR	* 157 909 679	781.35	22.8	8.2	116	80	23
250	110	IR	* 157 909 680	781.35	22.8	10.0	118	80	28
250	160	IR	* 157 909 683	781.35	22.8	14.6	118	70	38
250	200	IR	* 157 909 684	781.35	22.8	18.2	118	67	38
250	225	IR	* 157 909 685	781.35	22.8	20.5	118	64	38
315	63	IR	* 157 909 696	Call	28.7	5.8	154	100	28
315	75	IR	* 157 909 697	Call	28.7	6.9	150	100	23
315	90	IR	* 157 909 698	Call	28.7	8.2	151	100	23
315	110	IR	* 157 909 699	Call	28.7	10.0	148	100	23
315	160	IR	* 157 909 702	Call	28.7	14.6	148	100	23
315	200	IR	* 157 909 703	Call	28.7	18.2	151	100	33
315	225	IR	* 157 909 704	Call	28.7	20.5	153	99	33
315	250	IR	* 157 909 705	Call	28.7	22.8	157	86	48

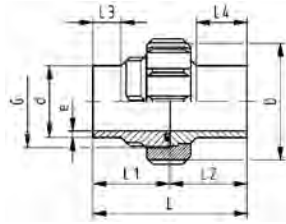
A

**Restraint Fitting, PN 10, Standard PP**



d (mm)	Part No.	USD	D (mm)	e (mm)	L (mm)	L1 (mm)	L2 (mm)
20	* 727 918 656	150.26	28	1.9	100	53	32
25	* 727 918 657	167.88	33	2.3	100	53	32
32	* 727 918 658	174.09	40	2.9	100	53	32
50	* 727 918 660	234.20	58	4.6	100	53	32
63	* 727 918 661	256.99	71	5.8	105	53	32
90	* 727 918 663	705.70	105	8.2	125	70	40
110	* 727 918 664	725.39	127	10.0	125	70	40

A



### Union, PN 10, Standard PP

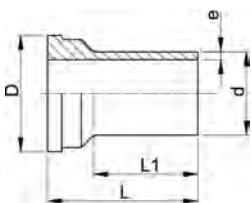
#### Model:

- Material: PP-H
- With butt fusion ends
- Conventional butt fusion and IR Plus® compatible
- Gasket: O-ring EPDM
- **For the dimensions d75-110 please see instructions for the installation**

d (mm)	FM	EPDM Part No.	USD	FKM Part No.	USD
20	IR	727 518 506	40.00	727 528 506	42.38
25	IR	727 518 507	48.29	727 528 507	55.34
32	IR	727 518 508	48.29	727 528 508	56.48
40	IR	^ 727 518 509	69.43	^ 727 528 509	81.14
50	IR	727 518 510	87.05	727 528 510	100.00
63	IR	727 518 511	115.03	727 528 511	129.53
75	IR	* 727 518 512	181.35	* 727 528 512	205.18
90	IR	* 727 518 513	212.44	* 727 528 513	242.49
110	IR	* 727 518 514	274.61	* 727 528 514	311.92

d (mm)	D (mm)	G (R/Rp BS Thread) (inch)	L (mm)	L1 (mm)	L2 (mm)	L3 (mm)	L4 (mm)	e (mm)
20	48	1	107	54.0	53.0	13	26	1.9
25	58	1 1/4	113	57.0	56.0	12	26	2.3
32	65	1 1/2	119	60.0	59.0	14	26	2.9
40	79	2	126	63.0	63.0	16	26	3.7
50	91	2 1/4	131	65.5	65.5	19	26	4.6
63	111	2 3/4	137	69.0	68.0	20	26	5.8
75	135	S107,5x3,6	131	66.0	65.5	22	24	6.8
90	135	S107,5x3,6	131	65.5	65.5	22	24	8.2
110	158	S127,5x3,6	131	65.5	65.5	22	25	10.0

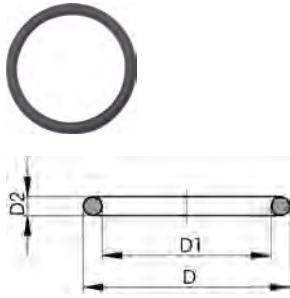
A



### Union End, PN 10, Standard PP

d (mm)	FM	Part No.	USD	D (mm)	L (mm)	L1 (mm)	e (mm)
20	IR	727 508 506	8.30	30	54	38	1.9
25	IR	727 508 507	12.50	39	57	42	2.3
32	IR	727 508 508	12.50	45	60	41	2.9
40	IR	727 508 509	24.00	57	63	42	3.7
50	IR	727 508 510	24.00	63	66	44	4.6
63	IR	727 508 511	26.00	78	69	45	5.8
75	IR	* 727 508 512	35.30	101	66	34	6.8
90	IR	727 508 513	42.38	101	66	45	8.2
110	IR	727 508 514	60.00	121	66	40	10.0

B



### O-Ring for PROGEF, SYGEF Standard IR/BCF and Socket Fusion Unions

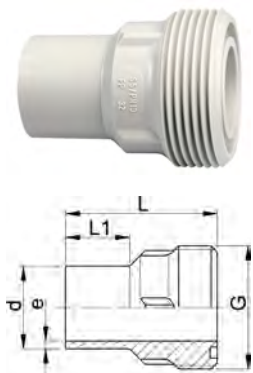
#### Model:

- For unions and adaptor unions
- Hardness approx. 65° Shore
- EPDM minimum temperature -40°F
- FKM minimum temperature -15°F
- \* for unions PVC-U, PVC-C and ABS: 21 51 01, 21 51 11, 21 53 03, 21 53 08, 21 55 04, 21 55 13, 21 55 18, 23 51 01 and 29 51 01 only

d (mm)	DN (mm)	EPDM Part No.	USD	weight (kg)	FKM Part No.	USD	weight (kg)
20	15	<b>^ 748 410 006</b>	<b>3.10</b>	0.002	<b>^ 749 410 006</b>	<b>5.20</b>	0.002
25	20	<b>^ 748 410 007</b>	<b>3.10</b>	0.002	<b>^ 749 410 007</b>	<b>6.20</b>	0.002
32	25	<b>748 410 008</b>	<b>6.20</b>	0.003	<b>749 410 008</b>	<b>7.30</b>	0.002
40	32	<b>748 410 009</b>	<b>6.20</b>	0.003	<b>749 410 009</b>	<b>16.60</b>	0.007
50	40	<b>748 410 010</b>	<b>6.20</b>	0.004	<b>749 410 010</b>	<b>18.70</b>	0.060
63	50	<b>748 410 011</b>	<b>8.30</b>	0.005	<b>749 410 011</b>	<b>19.70</b>	0.003
75	65	<b>* 748 410 014</b>	<b>12.50</b>	0.007	<b>* 749 410 014</b>	<b>29.00</b>	0.012
90	80	<b>* 748 410 015</b>	<b>19.27</b>	0.008	<b>* 749 410 015</b>	<b>32.12</b>	0.015
110	100	<b>* 748 410 016</b>	<b>19.27</b>	0.016	<b>* 749 410 016</b>	<b>50.78</b>	0.031

d (mm)	DN (mm)	D (mm)	D1 (mm)	D2 (mm)	closest inch (inch)
20	15	27	20	3.53	½
25	20	35	28	3.53	¾
32	25	40	33	3.53	1
40	32	51	41	5.34	1 ¼
50	40	58	47	5.34	1 ½
63	50	70	60	5.34	2
75	65	93	82	5.34	2 ½
90	80	112	101	5.34	3
110	100	134	120	6.99	4

A



### Union Bushing, PN 10, Standard PP, Socket Fusion

d (mm)	FM	Part No.	USD	weight (lb)	G (R/Rp BS Thread) (inch)	L (mm)	L1 (mm)	e (mm)
20	IR	<b>* 727 848 506</b>	<b>14.20</b>	0.026	1	54	26	1.9
25	IR	<b>* 727 848 507</b>	<b>18.86</b>	0.044	1 1/4	57	26	2.3
32	IR	<b>* 727 848 508</b>	<b>18.86</b>	0.064	1 1/2	60	25	2.6
40	IR	<b>* 727 848 509</b>	<b>27.05</b>	0.104	2	63	25	3.7
50	IR	<b>* 727 848 510</b>	<b>27.05</b>	0.137	2 1/4	66	25	4.6
63	IR	<b>* 727 848 511</b>	<b>30.57</b>	0.236	2 3/4	69	25	5.8
75	IR	<b>* 727 848 512</b>	<b>58.86</b>	0.379	S107.5x3.6	66	24	6.8
90	IR	<b>* 727 848 513</b>	<b>72.95</b>	0.401	S107.5x3.6	66	24	8.2
110	IR	<b>* 727 848 514</b>	<b>98.76</b>	0.569	S127.5x3.6	66	25	10.0

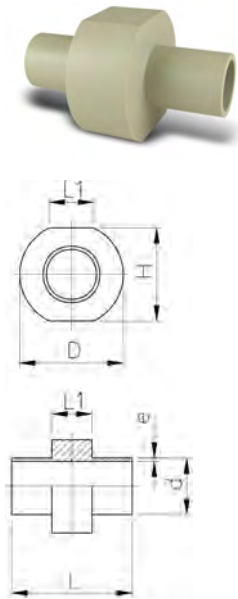
B



**Union Nut, PN 10, Standard PP**

Socket Fusion d (mm)	Butt Fusion d (mm)	G (R/Rp BS Thread) (inch)	Part No.	USD	D (mm)	L (mm)
16	16	3/4	<b>727 890 405</b>	<b>18.00</b>	35	21
20	20	1	<b>727 890 406</b>	<b>20.73</b>	48	24
25	25	1 1/4	<b>727 890 407</b>	<b>19.69</b>	58	26
32	32	1 1/2	<b>727 890 408</b>	<b>24.87</b>	65	28
40	40	2	<b>727 890 409</b>	<b>31.00</b>	77	27
50	50	2 1/4	<b>727 890 410</b>	<b>49.74</b>	84	30
63	63	2 3/4	<b>727 890 411</b>	<b>78.00</b>	111	39
75	75 - 90	S107,5x3,6	<b>* 727 890 422</b>	<b>92.95</b>	135	40
90	110	S127,5x3,6	<b>* 727 890 423</b>	<b>112.95</b>	158	43
110	-	S152,5x3,6	<b>* 727 890 424</b>	<b>146.11</b>	188	48

B

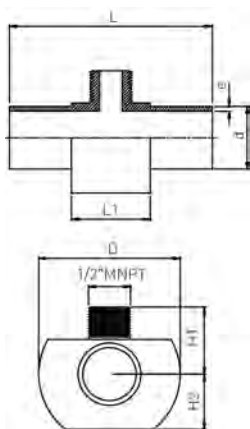


**Instrument Installation Fitting, PN 10, Standard PP**

Add "T" to end of part number and fee to list price for each factory milled thread (max. diameter is 3/4"). See published price list for fee.

d (mm)	FM	Part No.	USD	e (mm)	L (mm)	D (mm)	H (mm)	L1 (mm)
20	IR	<b>* 727 918 606</b>	<b>411.40</b>	1.9	140	71	58	40
25	IR	<b>* 727 918 607</b>	<b>422.80</b>	2.3	140	75	63	40
32	IR	<b>* 727 918 608</b>	<b>443.52</b>	3.0	140	81	70	40
40	IR	<b>* 727 918 609</b>	<b>452.85</b>	3.7	140	88	78	40
50	IR	<b>* 727 918 610</b>	<b>469.43</b>	4.6	140	97	88	40
63	IR	<b>* 727 918 611</b>	<b>648.70</b>	5.8	140	109	101	40
75	IR	<b>* 727 918 612</b>	<b>835.23</b>	6.9	140	120	113	40
90	IR	<b>* 727 918 613</b>	<b>835.23</b>	8.2	140	134	128	40
110	IR	<b>* 727 918 614</b>	<b>850.78</b>	10.0	140	153	148	40
160	IR	<b>* 727 918 567</b>	<b>895.34</b>	14.6	140	191	187	40
200	IR	<b>* 727 918 569</b>	<b>959.59</b>	18.2	140	223	220	40
225	IR	<b>* 727 918 570</b>	<b>1,012.44</b>	20.5	140	243	240	40

B

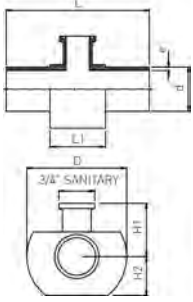


**1/2" MNPT Low Profile Adapter, PN 10, Standard PP**

IR Plus/Butt Fusion

d (mm)	FM	Part No.	USD	e (mm)	L (mm)	D (mm)	H1 (mm)	H2 (mm)	L1 (mm)
20	IR	<b>* 727 918 626</b>	<b>490.16</b>	1.90	140	71	28	29	40
25	IR	<b>* 727 918 627</b>	<b>502.59</b>	2.30	140	75	31	32	40
32	IR	<b>* 727 918 628</b>	<b>524.35</b>	3.00	140	81	34	35	40
40	IR	<b>* 727 918 629</b>	<b>538.86</b>	3.70	140	88	38	39	40
50	IR	<b>* 727 918 630</b>	<b>553.37</b>	4.60	140	97	43	44	40
63	IR	<b>* 727 918 631</b>	<b>581.35</b>	5.80	140	109	50	51	40
75	IR	<b>* 727 918 632</b>	<b>591.71</b>	6.90	140	120	56	57	40
90	IR	<b>* 727 918 633</b>	<b>656.99</b>	8.20	140	134	63	64	40
110	IR	<b>* 727 918 634</b>	<b>677.72</b>	10.00	140	153	73	74	40

B

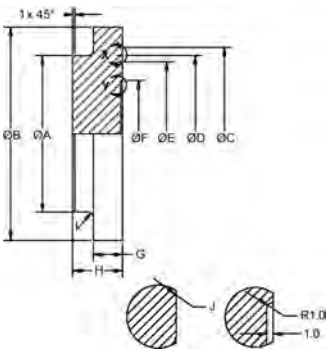


**3/4" (3A) Sanitary Adapter, PN 10, Standard PP**

IR Plus/Butt Fusion  
3/4" size sanitary adapter port, i.e. 0.985" flange OD

d (mm)	FM	Part No.	USD	e (mm)	L (mm)	D (mm)	H1 (mm)	H2 (mm)	L1 (mm)
20	IR	* 727 918 646	502.59	1.9	140	71	28	29	40
25	IR	* 727 918 647	516.06	2.3	140	75	31	32	40
32	IR	* 727 918 648	538.86	3.0	140	81	34	35	40
40	IR	* 727 918 649	552.33	3.7	140	88	38	39	40
50	IR	* 727 918 650	568.91	4.6	140	97	43	44	40
63	IR	* 727 918 651	591.71	5.8	140	109	50	51	40
75	IR	* 727 918 652	603.11	6.9	140	120	56	57	40
90	IR	* 727 918 653	668.39	8.2	140	134	63	64	40
110	IR	* 727 918 654	691.19	10.0	140	153	73	74	40

A

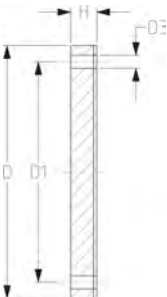


**Blind Flange, PN 10, Standard PP**

d (mm)	ANSI (inch)	Part No.	USD	weight (lb)
20	1/2	727 991 362	158.55	0.040
25	3/4	727 991 363	183.42	0.062
32	1	727 991 364	193.78	0.093
40	1 1/4	^ 727 991 365	203.11	0.132
50	1 1/2	727 991 366	216.58	0.172
63	2	727 991 367	224.87	0.309
90	3	727 991 369	281.87	0.672
110	4	727 991 370	295.34	0.970
160	6	* 727 991 372	309.84	2.205
200/225	8	* 727 991 373	466.32	5.115

d (mm)	A (mm)	B (mm)	C (mm)	D (mm)	E (mm)	F (mm)	G (mm)	H (mm)	Rad I (mm)	Rad J (mm)
20	26	44	28	22		16	7	14	1.0	0.4
25	32	54	36	29		20	9	16	1.5	0.4
32	40	63	43	36		26	10	17	1.5	0.4
40	49	73	54	47		33	11	19	2.0	0.4
50	60	79	64	56		41	12	20	2.0	0.4
63	75	99	83	75	69	51	14	24	2.5	0.4
90	105	133	115	106	97	74	17	27	3.0	0.4
110	125	158	138	128	118	90	18	28	3.0	0.5
160	175	200	191	181	171	131	25	38	4.0	1.0
200/225	232	268	250	240	230	164	32	48	4.0	1.0

B

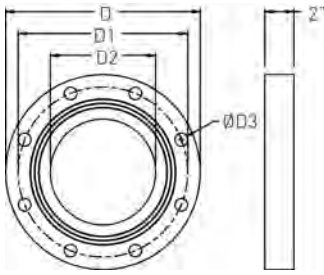


**Blind Flange with PP Sheet, PN 10, Standard PP**

- PP sheet is inside the blind flange as the wetted surface

d (mm)	Part No.	USD	D (mm)	D1 (mm)	H (mm)	D3 (mm)	# holes
250	* 157 991 250	544.04	419.10	361.95	44.50	25.40	12
315	* 157 991 315	684.97	494.00	431.80	50.80	25.40	12
355	* 157 991 355	1,158.55	546.00	476.30	54.00	29.00	12
400	* 157 991 405	1,421.76	610.00	539.80	57.20	29.00	16
450	* 157 991 450	1,579.27	648.00	577.90	63.50	32.00	16
500	* 157 991 500	1,736.79	711.00	635.00	69.90	32.00	20

B



**Full-Face Flange Spacer, PN 10, Standard PP**

ANSI (inch)	Part No.	USD	D (mm)	D1 (mm)	D2 (mm)	D3 (mm)	# holes
4	*727 991 340	Call	229	190	90	19	8
6	*727 991 341	Call	285	241	131	22	8
8	*727 991 342	Call	340	296	164	22	8
9	*727 991 343	Call	340	296	184	22	8
10	*727 991 344	Call	406	362	204	25	12
12	*727 991 345	Call	483	432	258	25	12

A

**PROGEF Standard flange adaptor S5/SDR11**  
**Combined jointing face: flat and serrated**

**Type A**



**Type B**



**Type C**

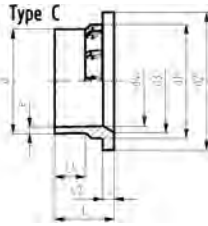
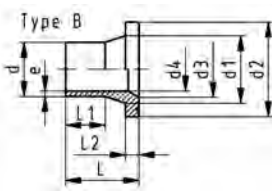
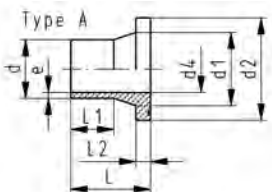


**Model:**

- Material: PP-H
- Conventional butt-welding according to DVS 2207
- IR compatible. Choose fusion parameters: PP-H
- Suitable for flange connections to **ANSI/ASME B 16.5**
- Up to d315, suitable for butterfly valve type 567/578 and 038/039.
- Gasket: Profile flange gasket EPDM No. 48 44 07, FKM No. 49 44 07

d (mm)	DN (mm)	FM	Part No.	USD	weight (kg)
20	15	IR	<b>727 798 706</b>	<b>8.60</b>	0.015
25	20	IR	<b>*727 798 757</b>	<b>9.84</b>	0.022
32	25	IR	<b>*727 798 758</b>	<b>13.47</b>	0.039
40	32	IR	<b>^727 798 759</b>	<b>14.72</b>	0.056
50	40	IR	<b>*727 798 760</b>	<b>18.86</b>	0.087
63	50	IR	<b>727 798 711</b>	<b>21.24</b>	0.144
75	65	IR	<b>727 798 712</b>	<b>24.77</b>	0.243
90	80	IR	<b>*727 798 763</b>	<b>36.48</b>	0.310
110	100	IR	<b>727 798 714</b>	<b>41.24</b>	0.441
160	150	IR	<b>727 798 317</b>	<b>90.57</b>	0.927
200	200	IR	<b>727 798 319</b>	<b>135.75</b>	1.652
225	200	IR	<b>*727 798 320</b>	<b>151.30</b>	1.665
250	250		<b>*727 798 321</b>	<b>254.92</b>	2.630
315	300		<b>*727 798 323</b>	<b>301.55</b>	3.247

d (mm)	DN (mm)	L1 (mm)	L2 (mm)	L (mm)	d1 (mm)	d4 (mm)	d2 (mm)	e (mm)	d3 (mm)	Type
20	15	29	7	50	26	16	45	1.9		A
25	20	27	9	52	33	20	54	2.3		A
32	25	28	10	54	40	26	63	3.0		A
40	32	25	11	55	50	32	73	3.7		A
50	40	32	12	62	61	40	82	4.6		A
63	50	38	14	68	75	49	102	5.8		A
75	65	43	16	80	89	58	122	6.8	66	B
90	80	42	17	80	105	70	133	8.2	78	B
110	100	41	18	80	125	87	158	10.0	100	B
160	150	40	25	92	175	127	212	14.6	151	C
200	200	35	32	100	232	174	268	18.2	203	C
225	200	35	32	100	235	196	268	20.5	210	C
250	250	45	35	120	285	203	320	22.7	252	C
315	300	50	50	150	335	256	370	28.6	300	C





A



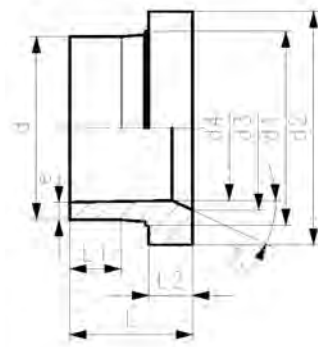
**Flange Adaptor (355-500mm), PN 10, Standard PP, Joining Face Flat and Serrated**

**Model:**

- Suitable for butterfly valve type 567/578 and 038/039

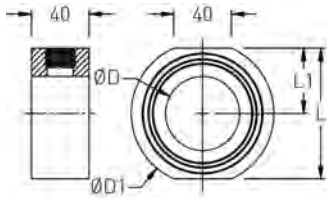
d (mm)	DN (mm)	Part No.	USD	weight (kg)
355	350	* 727 798 924	1,011.40	7.300
400	400	* 727 798 925	2,411.40	10.200
450	500	* 727 798 926	2,850.78	17.900
500	500	* 727 798 927	3,629.02	20.100

**Type B**



d1 (mm)	d2 (mm)	d3 (mm)	a°	d4 (mm)	L (mm)	L1 (mm)	L2 (mm)	Type	e (mm)
373	430	350	25	284	187	70	65	B	33.9
427	482	400	25	320	196	70	70	B	38.2
467	533	450	23	360	272	105	107	B	43.0
530	585	498	25	400	261	105	90	B	47.8

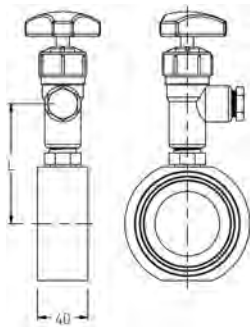
B



### Wafer (Pre-Drilled) with 1/2" FNPT, PN 10, Standard PP

d (mm)	Part No.	USD	L (mm)	L1 (mm)	D (mm)	D1 (mm)
50	* 727 992 260	289.12	71	35	40	82
63	* 727 992 261	299.48	94	47	51	102
75	* 727 992 262	320.21	115	57	61	121
90	* 727 992 263	326.42	127	63	73	133
110	* 727 992 264	330.57	153	76	90	158
160	* 727 992 265	602.07	208	104	130	212
200	* 727 992 266	695.34	265	132	163	268
225	* 727 992 267	774.09	265	132	184	268
250	* 727 992 268	922.28	317	158	204	320
315	* 727 992 269	1,403.11	368	184	257	370

B

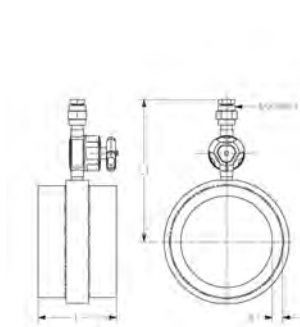


### Wafer Vent, PN 10, Standard PP

Vent valve is 1/2" Type 522 Angle Needle Valve, with MPT plug

d (mm)	Part No.	USD	L (mm)
50	* 727 991 960	368.91	84
63	* 727 991 961	374.09	95
75	* 727 991 962	410.36	106
90	* 727 991 963	433.16	112
110	* 727 991 964	736.79	125
160	* 727 991 965	953.37	153
200	* 727 991 966	1,062.18	181
225	* 727 991 967	1,185.49	181
250	* 727 991 968	1,633.16	207
315	* 727 991 969	1,975.13	232

B



### Vent Port Assembly, PN 10, Standard PP

IR Plus/Butt Fusion

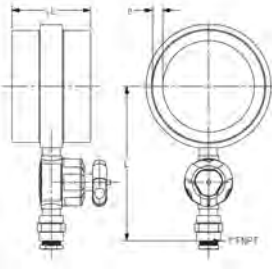
Vent is 1/2" PP-H Type 515 Diaphragm Valve with MPT plug

d (mm)	Part No.	USD	e (mm)	L (mm)	L1 (mm)
50	* 157 992 600	562.69	4.6	301	183
63	* 157 992 601	576.17	5.8	301	189
75	* 157 992 602	587.56	6.9	301	194
90	* 157 992 603	630.05	8.2	301	201
110	* 157 992 604	646.63	10.0	301	210
160	* 157 992 605	974.09	14.6	301	235
200	* 157 992 606	1,084.97	18.2	301	254
225	* 157 992 607	1,084.97	20.5	301	266
250	* 157 992 608	1,222.80	22.8	301	278
315	* 157 992 609	1,308.81	28.7	301	308

B

**Drain Port Assembly, PN 10, Standard PP**

IR Plus/Butt Fusion  
 Drain is 1" PP-H Type 515 Diaphragm Valve with MPT plug



d (mm)	Part No.	USD	e (mm)	L (mm)	L1 (mm)
50	* 157 992 610	671.50	4.6	301	215
63	* 157 992 611	684.97	5.8	301	221
75	* 157 992 612	695.34	6.9	301	227
90	* 157 992 613	741.97	8.2	301	233
110	* 157 992 614	757.51	10.0	301	242
160	* 157 992 615	1,082.90	14.6	301	268
200	* 157 992 616	1,193.78	18.2	301	287
225	* 157 992 617	1,268.39	20.5	301	294
250	* 157 992 618	1,331.61	22.8	301	310
315	* 157 992 619	1,417.62	28.7	301	340

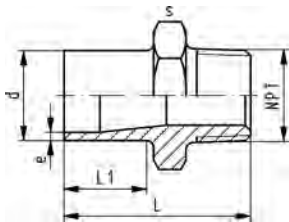
A

**Male Adapter, PN 10, Standard PP**



**Model:**

- Material: PP-H
- With butt fusion spigot SDR11 and NPT tapered male thread
- Do not use thread sealing pastes that are harmful to PP
- Install with low mechanical stress and avoid large cyclic temperature changes



d (mm)	NPT (inch)	FM	Part No.	USD	L (mm)	L1 (mm)	s (mm)	e (mm)
20	½	IR	727 914 656	17.72	51	23	32	1.9
25	¾	IR	727 914 657	20.00	52	23	36	2.3
32	1	IR	727 914 658	24.77	55	23	46	2.9
40	1 ¼	IR	^ 727 914 659	29.43	58	24	55	3.7
50	1 ½	IR	727 914 660	49.43	60	23	65	4.6
63	2	IR	727 914 661	63.52	67	26	80	5.8

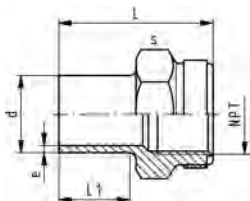
A

**Female Adapter, PN 10, Standard PP**



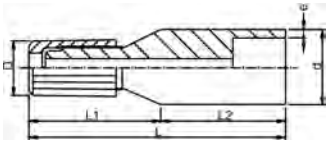
**Model:**

- Material: PP-H
- With butt fusion spigot **SDR11** and NPT tapered female thread, reinforced
- Reinforcing ring stainless (A2)
- Connection to plastic or metal threads
- Do not use thread sealing pastes that are harmful to PP
- Install with low mechanical stress and avoid large cyclic temperature changes



d (mm)	NPT (inch)	FM	Part No.	USD	weight (lb)	L (mm)	L1 (mm)	s (mm)	e (mm)
20	½	IR	727 914 356	21.24	0.037	49	23	32	1.9
25	¾	IR	727 914 357	24.77	0.049	51	23	36	2.3
32	1	IR	727 914 358	30.57	0.086	54	23	46	2.9
40	1 ¼	IR	^ 727 914 359	35.34	0.126	56	23	55	3.7
50	1 ½	IR	727 914 360	58.86	0.187	60	23	65	4.6
63	2	IR	727 914 361	64.66	0.269	62	23	80	5.8

A

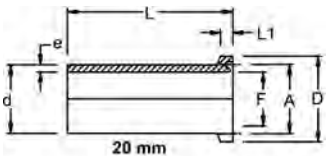


### Flare Tube Adapter, PN 10, Standard PP

IR Plus/Butt Fusion  
Nut is PVDF material

d (mm)	Tube Size (inch)	FM	Part No.	USD	e (mm)	D (mm)	L (mm)	L1 (mm)	L2 (mm)
20	¾	IR	* 727 991 430	143.01	1.9	19	74	43	31
20	¾	IR	* 727 991 431	143.01	1.9	22	77	46	31
20	½	IR	* 727 991 432	143.01	1.9	25	79	48	31
20	¾	IR	* 727 991 433	143.01	1.9	34	83	52	31
25	¾	IR	* 727 991 435	146.11	2.3	19	74	43	31
25	¾	IR	* 727 991 436	146.11	2.3	22	77	46	31
25	½	IR	* 727 991 437	146.11	2.3	25	79	48	31
25	¾	IR	* 727 991 438	146.11	2.3	34	83	52	31
25	1	IR	* 727 991 439	146.11	2.3	37	84	58	31
32	½	IR	* 727 991 442	168.91	3.0	25	79	48	31
32	¾	IR	* 727 991 443	168.91	3.0	34	83	52	31
32	1	IR	* 727 991 444	168.91	3.0	37	89	58	31

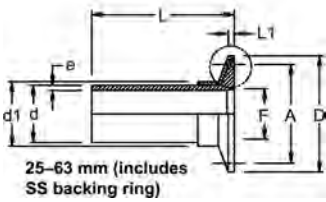
B



### Sanitary Adapter, PN 10, Standard PP

IR Plus/Butt Fusion

d (mm)	Tube (3A) (inch)	FM	Part No.	USD	e (mm)	D (mm)	d1 (mm)	A (mm)	F (mm)	L (mm)	L1 (mm)
20	¾	IR	* 157 300 016	120.21	1.9	25					49
25	1	IR	* 157 598 707	239.38	2.3	50	28	44	22	50	3
32	1 ½	IR	* 157 598 708	245.60	3.0	50	35	44	35	52	3
40	1 ½	IR	* 157 598 709	251.81	3.7	50	43	44	35	54	3
50	2	IR	* 157 598 710	258.03	4.6	64	53	57	48	61	3
63	2 ½	IR	* 157 598 711	279.79	5.8	77	66	71	60	67	3



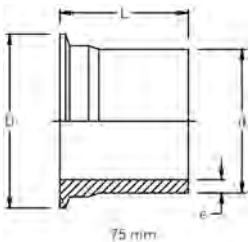
B



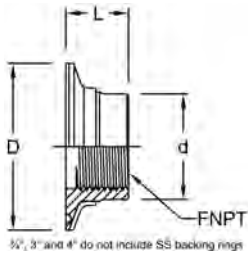
### Large Sanitary Adapter, PN 6, Standard PP

Does not use a stationary backing ring  
IR Plus/Butt Fusion

d (mm)	Tube (3A) (inch)	FM	Part No.	USD	e (mm)	D (mm)	L (mm)
75	3	IR	* 727 598 370	275.65	6.9	91	67
90	3	IR	* 727 598 371	304.66	8.2	91	76
110	4	IR	* 727 598 372	390.67	10.0	119	76



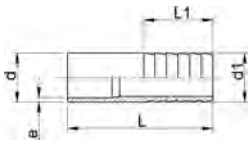
B



**Sanitary Instrument Adapter, PN 10, Standard PP**

Tube (3A) (inch)	FNPT (inch)	Part No.	USD	D (mm)	d (mm)	L (mm)
3/4	1/4	* 727 992 400	83.94	25	20	13
1	1/4	* 727 992 401	97.41	51	40	19
1	3/8	* 727 992 402	147.15	51	40	19
1 1/2	1/4	* 727 992 403	155.44	51	40	19
1 1/2	1/2	* 727 992 404	175.13	51	40	19
1 1/2	3/4	* 727 992 405	187.56	51	40	19

A



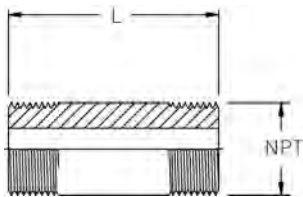
**Hose Connector, PN 10, Standard PP**

**Model:**

- Material: PP-H
- With butt fusion spigot SDR11 and parallel hose connection

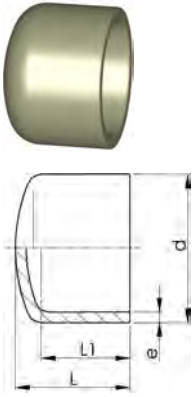
d (mm)	d1 (mm)	FM	Part No.	USD	e (mm)	L (mm)	L1 (mm)
20	20	IR	* 727 968 606	11.92	1.9	64	27
25	25	IR	* 727 968 607	14.30	2.3	75	36
32	32	IR	* 727 968 608	18.86	2.9	82	36
40	40	IR	* 727 968 609	25.91	3.7	84	42
50	50	IR	* 727 968 610	43.52	4.6	90	48
63	60	IR	* 727 968 611	49.43	5.8	100	50

B



**Nipple, PN 10, Standard PP**

Male NPT (inch)	L (inch)	Part No.	USD
1/2	2	* 727 992 350	158.55
1/2	3	* 727 992 351	158.55
1/2	4	* 727 992 352	158.55
3/4	2	* 727 992 353	158.55
3/4	3	* 727 992 354	158.55
3/4	4	* 727 992 355	160.62
1	2	* 727 992 356	160.62
1	3	* 727 992 357	161.66
1	4	* 727 992 358	164.77
1 1/4	3	* 727 992 359	166.84
1 1/4	4	* 727 992 360	167.88
1 1/2	3	* 727 992 361	166.84
1 1/2	4	* 727 992 362	167.88
2	3	* 727 992 363	172.02
2	4	* 727 992 364	173.06



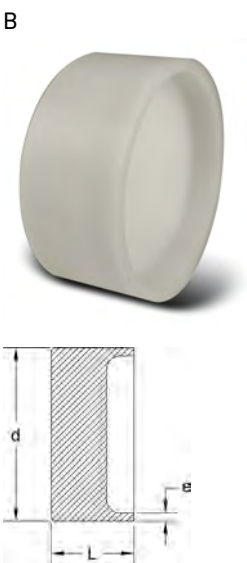
### End Cap (20-225mm), PN 10, Standard PP

d (mm)	FM	Part No.	USD	weight (kg)	L (mm)	L1 (mm)	e (mm)
20	IR	<b>727 968 106</b>	<b>16.48</b>	0.005	49	42	1.9
25	IR	<b>727 968 107</b>	<b>20.00</b>	0.007	52	42	2.3
32	IR	<b>727 968 108</b>	<b>24.77</b>	0.016	57	47	2.9
40	IR	<b>727 968 109</b>	<b>30.57</b>	0.023	64	51	3.7
50	IR	<b>727 968 110</b>	<b>41.24</b>	0.048	72	59	4.6
63	IR	<b>727 968 111</b>	<b>55.34</b>	0.087	86	67	5.8
75	IR	<b>727 968 112</b>	<b>83.52</b>	0.138	94	73	6.8
90	IR	<b>727 968 113</b>	<b>125.39</b>	0.222	112	83	8.2
110	IR	<b>727 968 114</b>	<b>151.30</b>	0.375	124	90	10.0
160	IR	<b>727 968 117</b>	<b>224.87</b>	1.040	162	109	14.6
200	IR	<b>727 968 119</b>	<b>274.61</b>	1.860	179	117	18.2
225	IR	<b>727 968 120</b>	<b>346.11</b>	2.625	203	127	20.5



### End Cap (250-500mm), PN 10, Standard PP

d (mm)	Part No.	USD	L (mm)	e (mm)
250	<b>* 727 968 846</b>	<b>524.35</b>	60	22.7
315	<b>* 727 968 848</b>	<b>1,013.47</b>	70	28.6
355	<b>* 727 968 849</b>	<b>1,646.63</b>	80	32.2
400	<b>* 727 968 850</b>	<b>2,902.59</b>	85	36.3
450	<b>* 727 968 851</b>	<b>2,812.44</b>	95	40.9
500	<b>* 727 968 852</b>	<b>3,498.45</b>	105	74.5



### Flush Style End Cap for tapping, PN 10, Standard PP

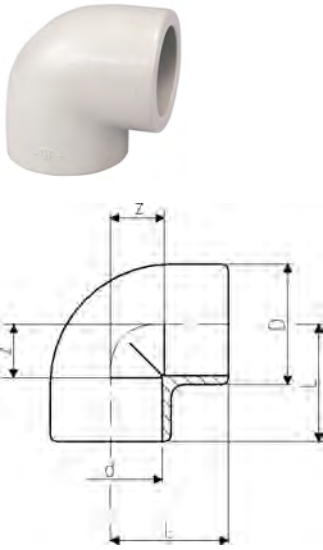
Add "T" to end of part number and fee to list price for each factory milled thread (max. diameter is 3/4"). See published price list for fee.

d (mm)	FM	Part No.	USD	e (mm)	L (mm)
20	IR	<b>* 727 992 680</b>	<b>88.08</b>	1.9	30
25	IR	<b>* 727 992 681</b>	<b>104.66</b>	2.3	30
32	IR	<b>* 727 992 682</b>	<b>112.95</b>	3.0	30
40	IR	<b>* 727 992 683</b>	<b>117.10</b>	3.7	30
50	IR	<b>* 727 992 684</b>	<b>125.39</b>	4.6	36
63	IR	<b>* 727 992 685</b>	<b>141.97</b>	5.8	37
75	IR	<b>* 727 992 686</b>	<b>203.11</b>	6.9	39
90	IR	<b>* 727 992 687</b>	<b>239.38</b>	8.2	40
110	IR	<b>* 727 992 688</b>	<b>305.70</b>	10.0	43
160	IR	<b>* 727 992 690</b>	<b>336.79</b>	14.6	57
200	IR	<b>* 727 992 691</b>	<b>358.55</b>	18.2	69
225	IR	<b>* 727 992 692</b>	<b>404.15</b>	20.5	77

# Socket Fusion Fittings

A

## 90° Elbow, PN 10, Standard PP, Socket Fusion



d (mm)	Part No.	USD	D (mm)	L (mm)	z (mm)
16	<b>727 100 105</b>	<b>7.36</b>	26	25	12
20	<b>727 100 106</b>	<b>8.60</b>	31	28	14
25	<b>727 100 107</b>	<b>9.84</b>	36	32	16
32	<b>727 100 108</b>	<b>12.23</b>	44	38	20
40	<b>^ 727 100 109</b>	<b>14.72</b>	54	44	24
50	<b>727 100 110</b>	<b>22.38</b>	66	51	28
63	<b>727 100 111</b>	<b>28.29</b>	82	62	35
75	<b>727 100 112</b>	<b>62.38</b>	93	76	45
90	<b>727 100 113</b>	<b>85.91</b>	110	88	53
110	<b>727 100 114</b>	<b>112.95</b>	134	106	65

A

## 90° Elbow BSP Thread, PN 10, Standard PP, Socket Fusion



d (mm)	Rp (inch)	FBSP (inch)	Part No.	USD	weight (lb)	D (mm)	L (mm)	z1 (mm)	z2 (mm)
20	½	½	<b>* 727 100 206</b>	<b>16.48</b>	0.049	30	28	14	14
25	¾	¾	<b>* 727 100 207</b>	<b>18.86</b>	0.077	35	32	16	16
32	1	1	<b>* 727 100 208</b>	<b>22.38</b>	0.126	44	38	20	20
40	1 ¼	1 ¼	<b>* 727 100 209</b>	<b>32.95</b>	0.192	54	44	24	24

A

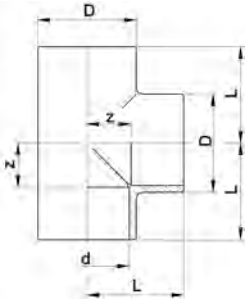
## 45° Elbow, PN 10, Standard PP, Socket Fusion



d (mm)	Part No.	USD	D (mm)	L (mm)	z (mm)
16	<b>727 150 105</b>	<b>9.84</b>	23	20	7
20	<b>727 150 106</b>	<b>12.23</b>	31	21	7
25	<b>727 150 107</b>	<b>13.47</b>	36	24	8
32	<b>727 150 108</b>	<b>14.72</b>	44	28	10
40	<b>^ 727 150 109</b>	<b>18.86</b>	53	33	13
50	<b>727 150 110</b>	<b>24.77</b>	64	36	13
63	<b>727 150 111</b>	<b>30.57</b>	82	43	16
75	<b>727 150 112</b>	<b>63.52</b>	93	51	20
90	<b>727 150 113</b>	<b>85.91</b>	114	58	23
110	<b>727 150 114</b>	<b>117.10</b>	134	68	27

A

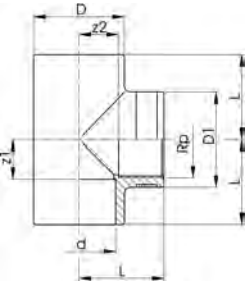
**Tee, PN 10, Standard PP, Socket Fusion**



d (mm)	Part No.	USD	weight (kg)	D (mm)	L (mm)	z (mm)
16	<b>727 200 105</b>	<b>8.60</b>	0.020	26	25	12
20	<b>727 200 106</b>	<b>9.84</b>	0.027	31	28	14
25	<b>727 200 107</b>	<b>9.84</b>	0.039	36	32	16
32	<b>727 200 108</b>	<b>12.23</b>	0.057	44	38	20
40	<b>727 200 109</b>	<b>14.72</b>	0.095	54	44	24
50	<b>727 200 110</b>	<b>25.91</b>	0.161	66	51	28
63	<b>727 200 111</b>	<b>37.62</b>	0.286	82	62	35
75	<b>727 200 112</b>	<b>83.52</b>	0.390	93	76	45
90	<b>727 200 113</b>	<b>133.68</b>	0.727	114	88	53
110	<b>727 200 114</b>	<b>170.98</b>	1.062	134	106	65

A

**Tee BSP Threaded Branch, PN 10, Standard PP, Socket Fusion**



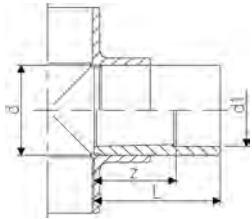
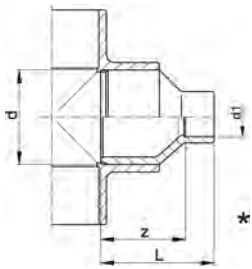
**Model:**

- Line is fusion socket metric
- Branch is BSP parallel female thread Rp, reinforced
- Reinforcing ring stainless (A2)
- Connection to plastic or metal threads
- Do not use thread sealing pastes that are harmful to PP
- Install with low mechanical stress and avoid large cyclic temperature changes

d (mm)	Rp (inch)	FBSP (inch)	Part No.	USD	D (mm)	D1 (mm)	L (mm)	z1 (mm)	z2 (mm)
20	½	½	<b>*727 200 206</b>	<b>22.38</b>	31	30	28	14	14
25	¾	¾	<b>*727 200 207</b>	<b>27.05</b>	36	35	32	16	16
32	1	1	<b>*727 200 208</b>	<b>27.05</b>	44	45	38	20	20
40	1 ¼	1 ¼	<b>*727 200 209</b>	<b>38.86</b>	54	55	44	24	24



A



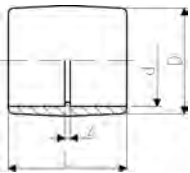
### Reducer Bushing, PN 10, Standard PP, Socket Fusion

#### Note:

\* Fusion spigot and socket

d (mm)	d1 (mm)	Part No.	USD	L (mm)	z (mm)
20	16	727 910 334	6.11	35	22
25	16	727 910 338	7.36	38	25
25	20	727 910 337	7.36	37	23
32	20	727 910 342	9.84	43	29
32	25	727 910 341	9.84	43	27
40	20	^ 727 910 348	12.23	48	34
40	25	^ 727 910 347	12.23	48	32
40	32	^ 727 910 346	12.23	48	30
50	20	727 910 355	16.48	54	40
50	25	727 910 354	16.48	54	38
50	32	727 910 353	16.48	54	36
50	40	^ 727 910 352	16.48	54	34
63	25	727 910 361	18.86	64	46
63	32	727 910 360	18.86	64	46
63	40	^ 727 910 359	18.86	64	44
63	50	727 910 358	18.86	64	41
75	63	727 910 364	29.43	62	35
90	63	727 910 371	42.38	88	61
90	75	727 910 370	42.38	70	39
110	90	727 910 376	58.86	81	46

A



### Coupling, PN 10, Standard PP, Socket Fusion

d (mm)	Part No.	USD	D (mm)	L (mm)	z (mm)
16	727 910 105	4.97	26	33	7
20	727 910 106	4.97	31	35	7
25	727 910 107	6.22	36	39	7
32	727 910 108	7.36	44	43	7
40	^ 727 910 109	9.84	54	48	8
50	727 910 110	18.86	66	54	8
63	727 910 111	25.91	82	62	8
75	727 910 112	36.48	93	70	8
90	727 910 113	49.43	112	81	11
110	727 910 114	81.14	134	96	14

A

### Flange Adaptor, ANSI Serrated, PN 10, Standard PP, Socket Fusion



d (mm)	Part No.	USD	weight (lb)	D (mm)	D1 (mm)	L (mm)	L1 (mm)	z (mm)
20	<b>727 790 206</b>	<b>6.22</b>	0.024	27	45	19	7	5
25	<b>727 790 257</b>	<b>21.24</b>	0.040	33	54	21	7	5
32	<b>727 790 258</b>	<b>21.24</b>	0.057	41	63	23	7	5
40	<b>^ 727 790 259</b>	<b>24.77</b>	0.090	50	73	25	8	5
50	<b>727 790 260</b>	<b>25.91</b>	0.121	61	82	28	8	5
63	<b>727 790 211</b>	<b>25.91</b>	0.198	76	102	32	14	5
75	<b>727 790 212</b>	<b>28.29</b>	0.342	90	122	36	16	5
90	<b>727 790 263</b>	<b>47.05</b>	0.417	108	133	36	16	5
110	<b>727 790 214</b>	<b>65.91</b>	0.631	131	158	48	18	7

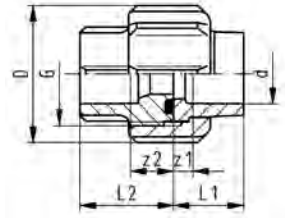
A

### End Cap, PN 10, Standard PP, Socket Fusion



d (mm)	Part No.	USD	D (mm)	L (mm)
16	<b>727 960 105</b>	<b>7.36</b>	25	20
20	<b>727 960 106</b>	<b>7.36</b>	30	27
25	<b>727 960 107</b>	<b>8.60</b>	36	30
32	<b>727 960 108</b>	<b>9.84</b>	44	34
40	<b>^ 727 960 109</b>	<b>12.23</b>	53	38
50	<b>727 960 110</b>	<b>17.72</b>	65	44
63	<b>727 960 111</b>	<b>22.38</b>	80	51
75	<b>727 960 112</b>	<b>37.62</b>	91	65
90	<b>727 960 113</b>	<b>47.05</b>	111	77
110	<b>727 960 114</b>	<b>62.38</b>	137	93

A



**Union, PN 10, Standard PP, Socket Fusion**

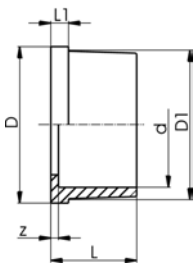
**Model:**

- Fusion socket metric
- Rated PN10 up to d110
- Joining face: with O-ring groove
- **For the dimensions d75-110 please see instructions for the installation**

d (mm)	EPDM Part No.	USD	FKM Part No.	USD
16	727 510 155	36.48	* 727 520 155	42.38
20	727 510 156	37.62	* 727 520 156	44.77
25	727 510 157	40.00	* 727 520 157	49.43
32	727 510 158	49.43	* 727 520 158	60.00
40	^ 727 510 159	65.91	* 727 520 159	82.38
50	727 510 160	92.95	* 727 520 160	109.84
63	727 510 161	132.64	* 727 520 161	153.37
75	^ 727 510 172	201.04	* 727 520 172	231.09
90	^ 727 510 173	265.28	* 727 520 173	301.55
110	^ 727 510 174	353.37	* 727 520 174	406.22

d (mm)	D (mm)	G (R/Rp BS Thread) (inch)	L1 (mm)	L2 (mm)	z1 (mm)	z2 (mm)
16	35	3/4	18	24	3	9
20	48	1	19	26	3	10
25	58	1 1/4	21	28	3	10
32	65	1 1/2	23	30	3	10
40	79	2	25	34	3	12
50	91	2 1/4	28	39	3	14
63	111	2 3/4	32	47	3	18
75	135	S107,5x3,6	36	51	3	18
90	158	S127,5x3,6	42	55	5	18
110	188	S152,5x3,6	49	54	5	10

B



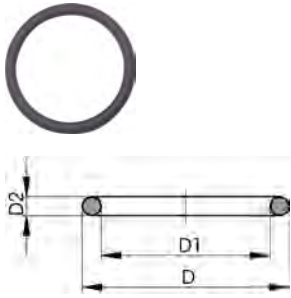
**Union End, PN 10, Standard PP, Socket Fusion**

**Model:**

- Fusion socket metric

d (mm)	Part No.	USD	D (mm)	D1 (mm)	L (mm)	L1 (mm)	z (mm)
16	727 500 105	3.50	24	22	18	4	3
20	727 500 106	4.15	30	28	19	5	3
25	727 500 107	4.15	39	36	21	5	3
32	727 500 108	5.20	45	42	23	6	3
40	727 500 109	6.30	57	53	25	6	3
50	727 500 110	7.25	63	59	28	7	3
63	727 500 111	8.30	79	74	32	8	3
75	* 727 500 112	43.50	101	91	36	10	3
90	* 727 500 113	55.34	121	108	42	11	5
110	* 727 500 114	65.91	146	131	49	12	6

B



### O-Ring for PROGEF, SYGEF Standard IR/BCF and Socket Fusion Unions

#### Model:

- For unions and adaptor unions
- Hardness approx. 65° Shore
- EPDM minimum temperature -40°F
- FKM minimum temperature -15°F
- \* for unions PVC-U, PVC-C and ABS: 21 51 01, 21 51 11, 21 53 03, 21 53 08, 21 55 04, 21 55 13, 21 55 18, 23 51 01 and 29 51 01 only

d (mm)	DN (mm)	EPDM Part No.	USD	weight (kg)	FKM Part No.	USD	weight (kg)
16	10	<b>748 410 005</b>	<b>3.00</b>	0.004	<b>749 410 005</b>	<b>3.30</b>	0.002
20	15	<b>^ 748 410 006</b>	<b>3.10</b>	0.002	<b>^ 749 410 006</b>	<b>5.20</b>	0.002
25	20	<b>^ 748 410 007</b>	<b>3.10</b>	0.002	<b>^ 749 410 007</b>	<b>6.20</b>	0.002
32	25	<b>748 410 008</b>	<b>6.20</b>	0.003	<b>749 410 008</b>	<b>7.30</b>	0.002
40	32	<b>748 410 009</b>	<b>6.20</b>	0.003	<b>749 410 009</b>	<b>16.60</b>	0.007
50	40	<b>748 410 010</b>	<b>6.20</b>	0.004	<b>749 410 010</b>	<b>18.70</b>	0.060
63	50	<b>748 410 011</b>	<b>8.30</b>	0.005	<b>749 410 011</b>	<b>19.70</b>	0.003

d (mm)	DN (mm)	D (mm)	D1 (mm)	D2 (mm)	closest inch (inch)
16	10	21	16	2.62	¾
20	15	27	20	3.53	½
25	20	35	28	3.53	¾
32	25	40	33	3.53	1
40	32	51	41	5.34	1 ¼
50	40	58	47	5.34	1 ½
63	50	70	60	5.34	2

A



### Union Bushing, PN 10, Standard PP, Socket Fusion

#### Model:

- Fusion socket metric
- **For the dimensions d75-110 please see instructions for the installation**

d (mm)	Part No.	USD	G (R/Rp BS Thread) (inch)	L (mm)	z (mm)
16	<b>727 840 155</b>	<b>13.47</b>	3/4	24	11
20	<b>727 840 156</b>	<b>14.72</b>	1	26	12
25	<b>727 840 157</b>	<b>16.48</b>	1 1/4	28	12
32	<b>727 840 158</b>	<b>18.86</b>	1 1/2	30	12
40	<b>^ 727 840 159</b>	<b>25.91</b>	2	34	14
50	<b>727 840 160</b>	<b>36.48</b>	2 1/4	39	16
63	<b>727 840 161</b>	<b>47.05</b>	2 3/4	47	20
75	<b>* 727 840 172</b>	<b>81.14</b>	S107,5x3,6	51	18
90	<b>* 727 840 173</b>	<b>109.84</b>	S127,5x3,6	55	18
110	<b>* 727 840 174</b>	<b>145.08</b>	S152,5x3,6	54	22

B



**Union Nut, PN 10, Standard PP**

Socket Fusion d (mm)	Butt Fusion d (mm)	G (R/Rp BS Thread) (inch)	Part No.	USD	D (mm)	L (mm)
16	16	3/4	<b>727 890 405</b>	<b>18.00</b>	35	21
20	20	1	<b>727 890 406</b>	<b>20.73</b>	48	24
25	25	1 1/4	<b>727 890 407</b>	<b>19.69</b>	58	26
32	32	1 1/2	<b>727 890 408</b>	<b>24.87</b>	65	28
40	40	2	<b>727 890 409</b>	<b>31.00</b>	77	27
50	50	2 1/4	<b>727 890 410</b>	<b>49.74</b>	84	30
63	63	2 3/4	<b>727 890 411</b>	<b>78.00</b>	111	39
75	75 - 90	S107,5x3,6	<b>* 727 890 422</b>	<b>92.95</b>	135	40
90	110	S127,5x3,6	<b>* 727 890 423</b>	<b>112.95</b>	158	43
110	-	S152,5x3,6	<b>* 727 890 424</b>	<b>146.11</b>	188	48

A



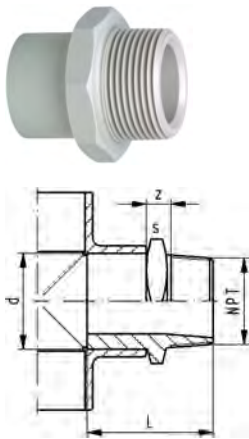
**Metric x ASTM Adapter Union, PN 10, Standard PP, Socket Fusion**

**Model:**

- Fusion socket metric
- Joining face: with O-ring groove

d (mm)	d2 (inch)	Part No.	USD	D (mm)	G (R/Rp BS Thread) (inch)	L1 (mm)	L2 (mm)	z1 (mm)	z2 (mm)
20	1/2	<b>* 727 513 006</b>	<b>58.86</b>	48	1	19	26	5	12
25	3/4	<b>* 727 513 007</b>	<b>61.14</b>	58	1 1/4	21	28	5	12
32	1	<b>* 727 513 008</b>	<b>74.09</b>	65	1 1/2	23	30	5	12
40	1 1/4	<b>* 727 513 009</b>	<b>89.43</b>	79	2	25	34	5	14
50	1 1/2	<b>* 727 513 010</b>	<b>146.11</b>	91	2 1/4	28	39	5	16
63	2	<b>* 727 513 011</b>	<b>194.82</b>	111	2 3/4	32	47	5	20

A



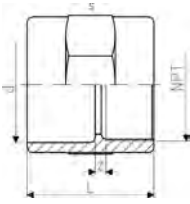
**Male Threaded Adapter, PN 10, Standard PP, Socket Fusion (spigot end)**

**Model:**

- With fusion spigot metric and NPT tapered male thread
- Connection to plastic thread only
- Do not use thread sealing pastes that are harmful to PP
- Install with low mechanical stress and avoid large cyclic temperature changes

d (mm)	NPT (inch)	Part No.	USD	s (mm)	L (mm)	z (mm)
16	3/8	<b>727 914 555</b>	<b>16.48</b>	27	37	13
20	1/2	<b>727 914 556</b>	<b>16.48</b>	32	42	13
25	3/4	<b>727 914 557</b>	<b>18.86</b>	36	46	13
32	1	<b>727 914 558</b>	<b>24.77</b>	46	52	12
40	1 1/4	<b>^ 727 914 559</b>	<b>55.34</b>	55	56	14
50	1 1/2	<b>727 914 560</b>	<b>60.00</b>	65	60	15
63	2	<b>727 914 561</b>	<b>80.00</b>	80	69	16

A



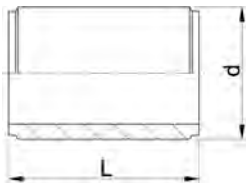
### Female Threaded Adapter, PN 10, Standard PP, Socket Fusion

#### Model:

- With fusion socket metric and NPT tapered female thread, reinforced
- Reinforcing ring stainless (A2)
- Connection to plastic or metal threads
- Do not use thread sealing pastes that are harmful to PP
- Install with low mechanical stress and avoid large cyclic temperature changes

d (mm)	NPT (inch)	Part No.	USD	L (mm)	s (mm)	z (mm)
20	½	<b>727 914 266</b>	<b>13.47</b>	40	32	7
25	¾	<b>727 914 267</b>	<b>18.86</b>	42	36	7
32	1	<b>727 914 268</b>	<b>22.38</b>	48	46	7
40	1 ¼	<b>727 914 269</b>	<b>25.91</b>	53	55	7
50	1 ½	<b>727 914 270</b>	<b>36.48</b>	54	65	9
63	2	<b>727 914 271</b>	<b>47.05</b>	62	80	9

A



### Barrel Nipple, PN 10, Standard PP, Socket Fusion

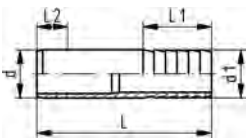
#### Model:

- Material: PP-H
- With socket fusion spigots on both ends
- For the shortest possible distance between fittings

\* In these two sizes, stiffeners Code No. 727900006 (20 x 1.9) and 727900007 (25 x 2.3), or pipe SDR 7.4 must be used with socket fusion joints.

d (mm)	Part No.	USD	weight (kg)	L (mm)
16	<b>727 910 905</b>	<b>Call</b>	0.005	36
* 20	<b>*727 910 906</b>	<b>7.36</b>	0.005	37
* 25	<b>*727 910 907</b>	<b>7.36</b>	0.006	41
32	<b>*727 910 908</b>	<b>9.84</b>	0.010	45
40	<b>*727 910 909</b>	<b>16.48</b>	0.017	50
50	<b>*727 910 910</b>	<b>20.00</b>	0.029	55
63	<b>*727 910 911</b>	<b>29.43</b>	0.058	64
75	<b>*727 910 912</b>	<b>38.86</b>	0.095	76
90	<b>*727 910 913</b>	<b>42.38</b>	0.163	90
110	<b>*727 910 914</b>	<b>58.86</b>	0.305	108

A



### Hose Connector, PN 10, Standard PP, Socket Fusion

#### Model:

- With socket fusion spigot (metric) and parallel hose connection

d (mm)	d1 (mm)	Part No.	USD	L (mm)	L1 (mm)	L2 (mm)
20	20	<b>*727 960 406</b>	<b>12.23</b>	78	27	14
25	25	<b>*727 960 407</b>	<b>15.96</b>	91	36	16
32	32	<b>*727 960 408</b>	<b>18.86</b>	100	36	18
40	40	<b>*727 960 409</b>	<b>29.43</b>	104	42	20
50	50	<b>*727 960 410</b>	<b>48.29</b>	90	48	23
63	60	<b>*727 960 411</b>	<b>52.95</b>	100	50	27

# Electrofusion Fittings

A



## Flex Restraint, Standard PP

- Use MSA 330/340

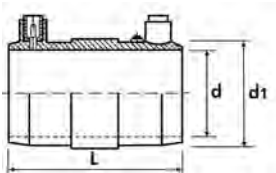
Size Range (inch)	Part No.	USD	Pack Qty	H (inch)	W (inch)	L (inch)
6 - 36	* 157 991 600	153.37	5	2.910	2.560	4.920

A



## Electrofusion Coupling, Standard PP

- 4mm pin connectors
- Pipe to pipe fusion only
- Use MSA 330/340



	Part No.	USD weight	d (kg)	L (mm)	d1 (mm)	
*	200 090 200	23.32	0.042	20	69	30
*	200 090 201	25.91	0.051	25	77	35
*	200 090 202	27.25	0.073	32	79	44
*	^ 200 090 203	29.22	0.096	40	91	53
*	200 090 204	44.87	0.131	50	102	64
*	200 090 205	47.46	0.227	63	117	80
*	200 090 206	66.74	0.333	75	128	95
*	200 090 207	88.91	0.486	90	144	112
*	200 090 208	108.81	0.813	110	159	136
*	200 090 209	108.81	1.089	125	170	153
*	200 090 211	144.04	1.651	160	185	194
*	200 090 213	248.70	3.588	200	210	243
*	* 200 090 214	304.66	4.200	225	212	273
*	* 200 090 215	752.33	6.600	250	260	315
*	* 200 090 217	1,225.91	10.950	315		
*	* 200 090 218	1,831.09	14.250	355		
*	* 200 090 219	2,238.34	18.200	400		
*	* 200 090 220	2,996.89	28.000	450		
*	* 200 090 221	3,121.24	18.500	500		

# Manual Valves

A



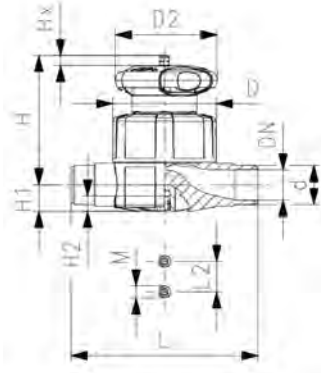
## Type 515 Diaphragm Valve PROGEF Standard PP Socket fusion spigot metric

### Model:

- Material: PP-H
- Double flow rate compared to predecessor
- One housing nut replaces four screws
- Handwheel with built-in locking mechanism
- EPDM version is PN 10 pressure rated. PTFE/EPDM version is PN 6 pressure rated.

### Option:

- Self adjusting multifunctional module with integrated limit switches

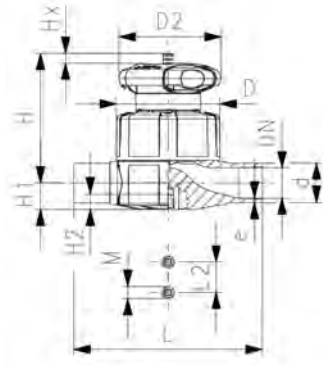


d (mm)	EPDM Part No.	USD	PTFE/EPDM Part No.	USD	FKM Part No.	USD	weight (lb)
20	167 515 012	127.46	167 515 032	262.18	167 515 062	194.82	0.657
25	167 515 013	141.97	167 515 033	273.58	167 515 063	207.25	0.646
32	167 515 014	182.38	167 515 034	327.46	167 515 064	245.60	2.094
40	^ 167 515 015	215.54	^ 167 515 035	417.62	^ 167 515 065	315.03	2.443
50	167 515 016	277.72	167 515 036	525.39	167 515 066	395.85	4.535
63	167 515 017	349.22	167 515 037	659.07	167 515 067	494.30	5.741

d (mm)	D (mm)	D2 (mm)	L (mm)	L2 (mm)	H (mm)	H1 (mm)	H2 (mm)	M	Lift = Hx (mm)	e (mm)	closest inch (inch)
20	65	65	124	25	73	14	12	M6	7	1.9	1/2
25	80	65	144	25	81	18	12	M6	10	2.3	3/4
32	88	87	154	25	107	22	12	M6	13	2.9	1
40	101	87	174	45	115	26	15	M8	15	3.7	1 1/4
50	117	135	194	45	148	32	15	M8	19	4.6	1 1/2
63	144	135	223	45	166	39	15	M8	25	5.8	2



A



**Type 515 Diaphragm Valve PROGEF Standard PP**  
Butt fusion spigots SDR11 metric

**Model:**

- Material: PP-H
- Double flow rate compared to predecessor
- One housing nut replaces four screws
- Handwheel with built-in locking mechanism
- EPDM version is PN 10 pressure rated. PTFE/EPDM version is PN 6 pressure rated.

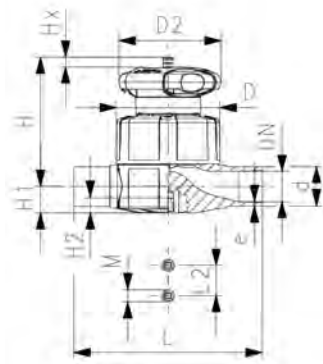
**Option:**

- Self adjusting multifunctional module with integrated limit switches

d (mm)	EPDM Part No.	USD	PTFE/EPDM Part No.	USD	FKM Part No.	USD	weight (lb)
20	167 515 112	152.00	167 515 132	292.00	167 515 162	218.00	0.655
25	167 515 113	170.00	167 515 133	327.00	167 515 163	246.00	0.840
32	167 515 114	214.00	167 515 134	393.00	167 515 164	296.00	2.090
40	167 515 115	258.00	167 515 135	504.00	167 515 165	378.00	2.434
50	167 515 116	332.00	167 515 136	626.00	167 515 166	469.00	4.524
63	167 515 117	416.00	167 515 137	785.00	167 515 167	589.00	5.734

d (mm)	D (mm)	D2 (mm)	H (mm)	H1 (mm)	H2 (mm)	L (mm)	L2 (mm)	M	e (mm)	Lift = Hx (mm)	closest inch (inch)
20	65	65	73	14	12	124	25	M6	1.9	7	½
25	80	65	81	18	12	144	25	M6	2.3	10	¾
32	88	87	107	22	12	155	25	M6	2.9	13	1
40	101	87	115	26	15	176	45	M8	3.7	15	1 ¼
50	117	135	148	32	15	193	45	M8	4.6	19	1 ½
63	144	135	166	39	15	223	45	M8	5.8	25	2

A



**Type 515 Diaphragm Valve PROGEF Plus PP Silicone Free**  
Butt fusion spigots SDR11 metric

d (mm)	EPDM Part No.	USD	PTFE/EPDM Part No.	USD
20	167 515 122	213.00	167 515 172	363.00
25	167 515 123	236.00	167 515 173	454.00
32	167 515 124	297.00	167 515 174	545.00
40	^ 167 515 125	354.00	^ 167 515 175	686.00
50	167 515 126	456.00	167 515 176	780.00
63	167 515 127	542.00	167 515 177	1,091.00

d (mm)	D (mm)	D2 (mm)	H (mm)	H1 (mm)	H2 (mm)	L (mm)	L2 (mm)	M	e (mm)	Lift = Hx (mm)	closest inch (inch)
20	65	65	73	14	12	124	25	M6	1.9	7	½
25	80	65	81	18	12	144	25	M6	2.3	10	¾
32	88	87	107	22	12	155	25	M6	2.9	13	1
40	101	87	115	26	15	176	45	M8	3.7	15	1 ¼
50	117	135	148	32	15	193	45	M8	4.6	19	1 ½
63	144	135	166	39	15	223	45	M8	5.8	25	2

A



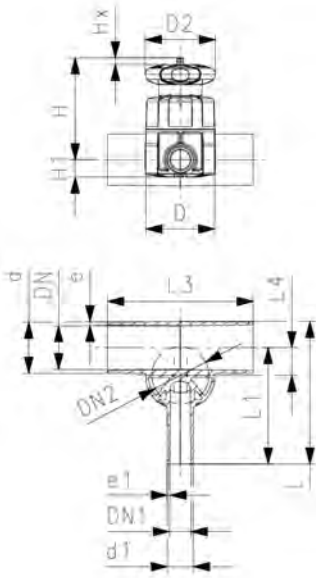
**Type 519 Zero Static Diaphragm Valve**  
**PROGEF Standard PP**  
**Butt fusion spigots metric**

**Model:**

- Material: PP-H
- Double flow rate compared to predecessor
- One housing nut replaces four screws
- Handwheel with built-in locking mechanism
- Smallest possible dead space

**Option:**

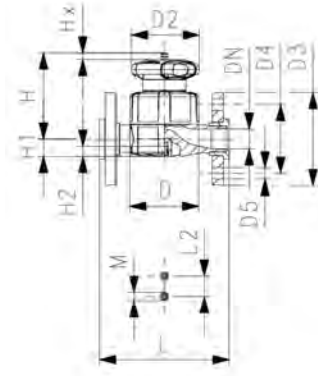
- Self adjusting multifunctional module with integrated limit switches



d (mm)	d1 (mm)	DN (mm)	PN (bar)	Cv-value (L/min)	EPDM Part No.	USD	PTFE/EPDM Part No.	USD
20	20	15	10	57	^ 167 519 101	475.00	^ 167 519 301	769.00
25	20	20	10	89	^ 167 519 103	480.00	^ 167 519 303	776.00
25	25	20	10	118	^ 167 519 104	487.00	^ 167 519 304	785.00
32	20	25	10	80	^ 167 519 107	490.00	^ 167 519 307	793.00
32	25	25	10	105	^ 167 519 108	497.00	^ 167 519 308	800.00
32	32	25	10	231	^ 167 519 109	501.00	^ 167 519 309	809.00
40	20	32	10	85	^ 167 519 112	509.00	^ 167 519 312	823.00
40	40	32	10	187	^ 167 519 115	533.00	^ 167 519 315	909.00
50	20	40	10	86	^ 167 519 118	587.00	^ 167 519 318	971.00
50	25	40	10	160	^ 167 519 119	676.00	^ 167 519 319	1,049.00
50	32	40	10	206	^ 167 519 120	702.00	^ 167 519 320	1,089.00
63	20	50	10	84	^ 167 519 125	762.00	^ 167 519 325	1,122.00
63	25	50	10	150	^ 167 519 126	794.00	^ 167 519 326	1,136.00
63	32	50	10	184	^ 167 519 127	839.00	^ 167 519 327	1,160.00

d (mm)	D (mm)	D2 (mm)	H (mm)	L (mm)	L1 (mm)	L3 (mm)	L4 (mm)	e (mm)	e1 (mm)	Lift = Hx (mm)	Valve Size d (mm)	DN1 (mm)	DN2 (mm)
20	65	65	75	117	96	162	12	1.9	1.9	7	20	15	15
25	80	65	80	133	108	162	16	2.3	1.9	10	25	15	20
25	80	65	80	133	108	162	16	2.3	2.3	10	25	20	20
32	80	65	84	142	120	162	19	2.9	1.9	10	25	15	20
32	80	65	84	142	120	162	19	2.9	2.3	10	25	20	20
32	88	87	107	145	120	160	19	2.9	2.9	13	32	25	25
40	88	87	115	149	128	180	23	3.7	1.9	13	32	15	25
40	88	87	115	174	153	180	23	3.7	3.7	13	32	32	25
50	80	65	97	160	134	180	27	4.6	1.9	10	25	15	20
50	88	87	120	160	134	180	28	4.6	2.3	13	32	20	25
50	88	87	120	160	134	180	28	4.6	2.9	13	32	25	25
63	80	65	104	177	144	180	33	5.8	1.9	10	25	15	20
63	88	87	127	177	144	180	35	5.8	2.3	13	32	20	25
63	88	87	127	177	144	180	35	5.8	2.9	13	32	25	25

A



**Type 517 Diaphragm Valve PROGEF Standard PP  
ANSI Flanged**

**Model:**

- Material: PP-H
- Double flow rate compared to predecessor
- One housing nut replaces four screws
- Handwheel with built-in locking mechanism
- Joining faces flat/serrated
- EPDM version is PN 10 pressure rated. PTFE/EPDM version is PN 6 pressure rated.
- Connecting dimension: ANSI/ASME B 16.5 class 150, ASTM D 4024, BS 1560, BS EN 1759

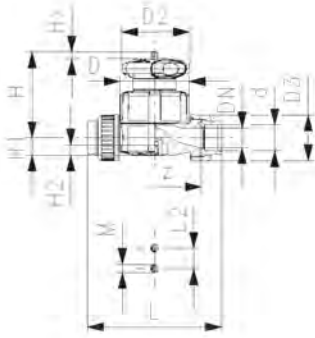
**Option:**

- Individual configuration of the valve (see diagram)
- Self adjusting multifunctional module with integrated limit switches

Size (inch)	EPDM Part No.	USD	PTFE/EPDM Part No.	USD	weight (lb)
½	^ 167 517 712	208.00	^ 167 517 732	353.00	1.080
¾	^ 167 517 713	212.00	^ 167 517 733	412.00	1.411
1	^ 167 517 714	283.00	^ 167 517 734	493.00	2.901
1 ¼	^ 167 517 715	326.00	^ 167 517 735	632.00	3.660
1 ½	^ 167 517 716	434.00	^ 167 517 736	776.00	5.800
2	^ 167 517 717	549.00	^ 167 517 737	987.00	7.875

Size (inch)	D (mm)	D2 (mm)	D3 (mm)	D4 (mm)	D5 (mm)	H (mm)	H1 (mm)	H2 (mm)	L (mm)	L2 (mm)	M	Lift = Hx (mm)
½	65	65	95	60	16	73	14	12	130	25	M6	7
¾	80	65	105	70	16	81	18	12	150	25	M6	10
1	88	87	115	79	16	107	22	12	160	25	M6	13
1 ¼	101	87	140	89	16	115	26	15	180	45	M8	15
1 ½	117	135	150	98	16	148	32	15	200	45	M8	19
2	144	135	165	121	19	166	39	15	230	45	M8	25

A



**Type 514 Diaphragm Valve PROGEF Standard PP**  
Fusion sockets metric

**Model:**

- Material: PP-H
- Double flow rate compared to predecessor
- One housing nut replaces four screws
- Handwheel with built-in locking mechanism
- For easy installation and removal
- Short overall length

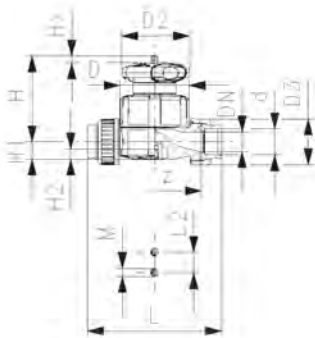
**Option:**

- Self adjusting multifunctional module with integrated limit switches

d (mm)	EPDM Part No.	USD	PTFE/EPDM Part No.	USD	FKM Part No.	USD	weight (lb)
20	167 514 012	169.00	167 514 032	346.00	167 514 062	260.00	0.589
25	167 514 013	184.00	167 514 033	352.00	167 514 063	263.00	0.862
32	167 514 014	220.00	167 514 034	405.00	167 514 064	304.00	2.538
40	167 514 015	265.00	167 514 035	519.00	167 514 065	389.00	2.815
50	167 514 016	346.00	167 514 036	659.00	167 514 066	494.00	3.056
63	167 514 017	434.00	167 514 037	818.00	167 514 067	613.00	6.680

d (mm)	D (mm)	D2 (mm)	D3 (mm)	H (mm)	H1 (mm)	H2 (mm)	L (mm)	L2 (mm)	M	z (mm)	Lift = Hx (mm)	closest inch (inch)
20	65	65	48	73	14	12	128	25	M6	100	7	½
25	80	65	58	81	18	12	150	25	M6	118	10	¾
32	88	87	65	107	22	12	162	25	M6	126	13	1
40	101	87	79	115	26	15	184	45	M8	144	15	1 ¼
50	117	135	91	148	32	15	210	45	M8	164	19	1 ½
63	144	135	111	166	39	15	248	45	M8	194	25	2

A

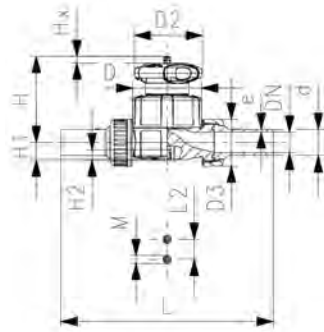


**Type 514 Diaphragm Valve PROGEF Plus PP Silicone Free**  
Fusion sockets metric

d (mm)	EPDM Part No.	USD	PTFE/EPDM Part No.	USD
20	167 514 022	234.00	167 514 072	480.00
25	167 514 023	252.00	167 514 073	490.00
32	167 514 024	307.00	167 514 074	562.00
40	167 514 025	368.00	167 514 075	722.00
50	167 514 026	480.00	167 514 076	913.00
63	167 514 027	601.00	167 514 077	1,136.00

d (mm)	D (mm)	D2 (mm)	D3 (mm)	H (mm)	H1 (mm)	H2 (mm)	L (mm)	L2 (mm)	M	z (mm)	Lift = Hx (mm)	closest inch (inch)
20	65	65	43	73	14	12	128	25	M6	100	7	½
25	80	65	51	81	18	12	150	25	M6	118	10	¾
32	88	87	58	107	22	12	162	25	M6	126	13	1
40	101	87	72	115	26	15	184	45	M8	144	15	1 ¼
50	117	135	83	148	32	15	210	45	M8	164	19	1 ½
63	144	135	100	166	39	15	248	45	M8	194	25	2

A



**Type 514 Diaphragm Valve PROGEF Standard PP**  
Butt fusion spigots SDR11 metric

**Model:**

- Material: PP-H
- Double flow rate compared to predecessor
- One housing nut replaces four screws
- Handwheel with built-in locking mechanism
- For easy installation and removal
- Short overall length

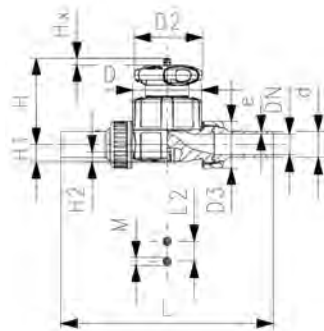
**Option:**

- Self adjusting multifunctional module with integrated limit switches

d (mm)	EPDM Part No.	USD	PTFE/EPDM Part No.	USD	FKM Part No.	USD
20	167 514 112	201.00	167 514 132	403.00	167 514 162	343.00
25	167 514 113	211.00	167 514 133	405.00	167 514 163	345.00
32	167 514 114	258.00	167 514 134	473.00	167 514 164	403.00
40	167 514 115	315.00	167 514 135	613.00	167 514 165	520.00
50	167 514 116	405.00	167 514 136	771.00	167 514 166	656.00
63	167 514 117	507.00	167 514 137	960.00	167 514 167	817.00

d (mm)	D (mm)	D2 (mm)	D3 (mm)	H (mm)	H1 (mm)	H2 (mm)	L (mm)	L2 (mm)	M	e (mm)	Lift = Hx (mm)	closest inch (inch)
20	65	65	48	73	14	12	196	25	M6	1.9	7	½
25	80	65	58	81	18	12	221	25	M6	2.3	10	¾
32	88	87	65	107	22	12	234	25	M6	2.9	13	1
40	101	87	79	115	26	15	260	45	M8	3.7	15	1 ¼
50	117	135	91	148	32	15	284	45	M8	4.6	19	1 ½
63	144	135	111	166	39	15	321	45	M8	5.8	25	2

A



**Type 514 Diaphragm Valve PROGEF Plus PP Silicone Free**  
Butt fusion spigots SDR11 metric

d (mm)	EPDM Part No.	USD	PTFE/EPDM Part No.	USD
20	167 514 122	279.00	167 514 172	542.00
25	167 514 123	291.00	167 514 173	562.00
32	167 514 124	354.00	167 514 174	626.00
40	167 514 125	434.00	167 514 175	668.00
50	167 514 126	562.00	167 514 176	1,039.00
63	167 514 127	704.00	167 514 177	1,280.00

d (mm)	D (mm)	D2 (mm)	D3 (mm)	H (mm)	H1 (mm)	H2 (mm)	L (mm)	L2 (mm)	M	e (mm)	Lift = Hx (mm)	closest inch (inch)
20	65	65	43	73	14	12	196	25	M6	1.9	7	½
25	80	65	51	81	18	12	221	25	M6	2.3	10	¾
32	88	87	58	107	22	12	234	25	M6	2.9	13	1
40	101	87	72	115	26	15	260	45	M8	3.7	15	1 ¼
50	117	135	83	148	32	15	284	45	M8	4.6	19	1 ½
63	144	135	100	166	39	15	321	45	M8	5.8	25	2

A



**Type 317 Diaphragm Valve PROGEF Standard Flanged**

**Model:**

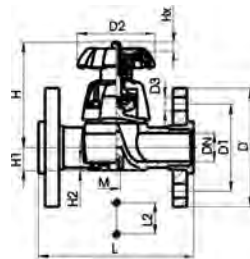
- Material: PP-H
- Joining faces serrated
- Connecting dimensions: ISO 7005 / EN 1092 / DIN 2501 PN10 / BS4504
- With PP-V backing flanges DN 15-65

**Option:**

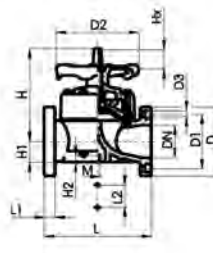
- Handwheel with built-in locking mechanism
- \* With PP fixed flanges, joining faces flat

Size (inch)	EPDM Part No.	USD	PTFE Part No.	USD
2 1/2	* 167 317 523	626.00	* 167 317 538	978.00
3	* 167 317 024	927.00	* 167 317 039	1,364.00
4	* 167 317 325	1,305.00	* 167 317 340	1,817.00
6	* 167 317 027	3,717.00	* 167 317 042	5,531.00

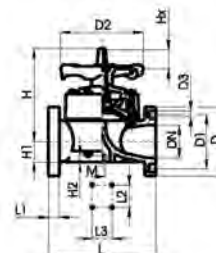
Size (inch)	D (mm)	D1 (mm)	D2 (mm)	D3 (mm)	H (mm)	H1 (mm)	H2 (mm)	L (mm)	L1 (mm)	L2 (mm)	L3 (mm)	M	Lift = Hx (mm)	AL
2 1/2	185	140	152	19	210	46	15	290		70		M8	35	4
3	200	160	270	18	265	57	23	310	35	120		M12	40	8
4	225	190	270	19	304	69	23	350	38	120		M12	50	8
6	282	241	400	23	437	108	23	480	29	100	200	M12	70	8



DN 15-65



DN 80-100

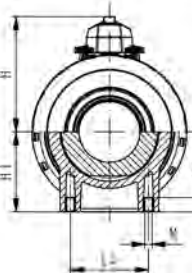
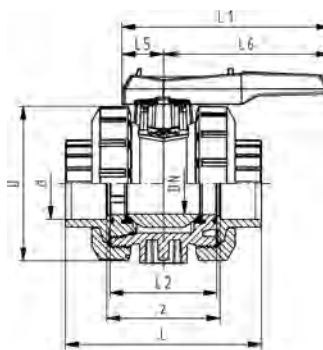
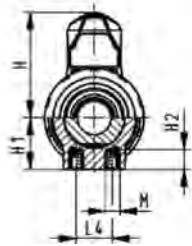
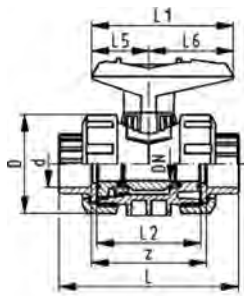


DN 150

A



DN10/15 - 50



**Type 546 Ball Valve PROGEF Standard**  
**With mounting inserts**  
**With fusion sockets metric**

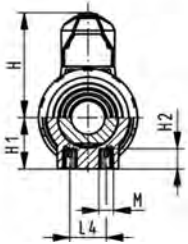
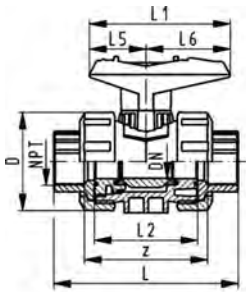
d (mm)	EPDM Part No.	USD	FKM Part No.	USD	weight (lb)
16	167 546 401	72.00	167 546 411	91.00	0.254
20	167 546 402	76.68	167 546 412	93.26	0.271
25	167 546 403	92.23	167 546 413	110.88	0.406
32	167 546 404	126.42	167 546 414	135.75	0.569
40	167 546 405	139.00	167 546 415	170.00	0.994
50	167 546 406	185.00	167 546 416	223.00	1.360
63	167 546 407	223.00	167 546 417	287.00	2.491
75	167 546 408	540.00	167 546 418	698.00	7.352
90	167 546 409	673.00	167 546 419	874.00	12.125
110	167 546 410	811.00	167 546 420	1,046.00	19.180

d (mm)	D (mm)	H (mm)	H1 (mm)	H2 (mm)	L (mm)	L1 (mm)	L2 (mm)	L4 (mm)	L5 (mm)	L6 (mm)	M	z (mm)	closest inch (inch)
16	50	57	27	12	93	77	56	25	32	45	M6	67	3/8
20	50	57	27	12	95	77	56	25	32	45	M6	66	1/2
25	58	67	30	12	109	97	65	25	39	58	M6	77	3/4
32	68	73	36	12	119	97	71	25	39	58	M6	83	1
40	84	90	44	15	135	128	85	45	54	74	M8	99	1 1/4
50	97	97	51	15	147	128	89	45	54	74	M8	105	1 1/2
63	124	116	64	15	168	152	101	45	66	87	M8	117	2
75	166	149	85	15	233	270	136	70	64	206	M8	167	2 1/2
90	200	161	105	15	254	270	141	70	64	206	M8	180	3
110	238	178	123	22	301	320	164	120	64	256	M12	215	4

A



DN10/15 - 50



**Type 546 Ball Valve PROGEF Standard  
With mounting inserts  
With threaded sockets NPT**

**Option:**

- Individual configuration of the valve (see diagram)

NPT (inch)	EPDM Part No.	USD	FKM Part No.	USD	weight (lb)
3/8	167 546 321	100.00	167 546 331	117.00	0.265
1/2	167 546 322	105.00	167 546 332	122.00	0.265
3/4	167 546 323	122.00	167 546 333	138.00	0.397
1	167 546 324	147.00	167 546 334	173.00	0.595
1 1/4	167 546 325	188.00	167 546 335	215.00	1.014
1 1/2	167 546 326	235.00	167 546 336	278.00	1.400
2	167 546 327	285.00	167 546 337	345.00	2.624

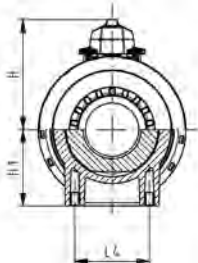
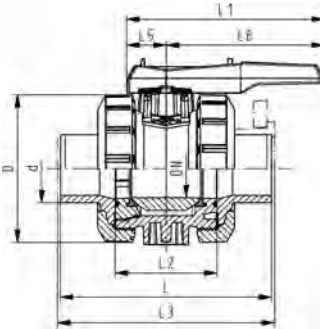
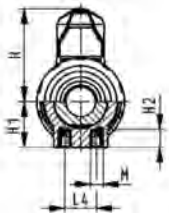
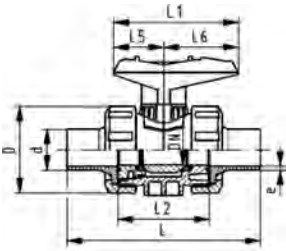
NPT (inch)	D (mm)	H (mm)	H1 (mm)	H2 (mm)	L (mm)	L1 (mm)	L2 (mm)	L4 (mm)	L5 (mm)	L6 (mm)	M	z (mm)
3/8	50	57	27	12	96	77	56	25	32	45	M6	71
1/2	50	57	27	12	99	77	56	25	32	45	M6	64
3/4	58	67	30	12	111	97	65	25	39	58	M6	76
1	68	73	36	12	127	97	71	25	39	58	M6	83
1 1/4	84	90	44	15	146	128	85	45	54	74	M8	100
1 1/2	97	97	51	15	157	128	89	45	54	74	M8	111
2	124	116	64	15	183	152	101	45	66	87	M8	134



A



DN10/15 - 50



**Type 546 Ball Valve PROGEF Standard**  
**With mounting inserts**  
**With butt fusion spigots IR-Plus**

**Model:**

- Material: PP-H
- For easy installation and removal
- Ball seals PTFE
- Integrated stainless steel mounting inserts

**Option:**

- Individual configuration of the valve (see diagram)
- Multifunctional module with integrated limit switches
- Pneumatic or electric actuators from GF

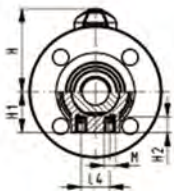
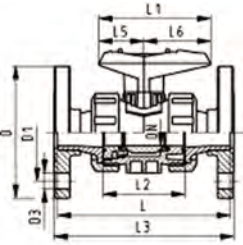
d (mm)	EPDM Part No.	USD	FKM Part No.	USD	weight (lb)
20	167 546 442	83.00	167 546 452	98.00	0.271
25	167 546 443	97.00	167 546 453	115.00	0.408
32	167 546 444	120.00	167 546 454	146.00	0.580
40	167 546 445	148.00	167 546 455	177.00	1.005
50	167 546 446	191.00	167 546 456	235.00	1.415
63	167 546 447	234.00	167 546 457	300.00	2.601
75	167 546 448	555.00	167 546 458	673.00	5.736
90	167 546 449	689.00	167 546 459	841.00	12.125
110	167 546 450	822.00	167 546 460	1,027.00	19.180

d (mm)	D (mm)	H (mm)	H1 (mm)	H2 (mm)	L (mm)	L1 (mm)	L2 (mm)	L4 (mm)	L5 (mm)	L6 (mm)	M	e (mm)	closest inch (inch)
20	50	57	27	12	130	77	56	25	32	45	M6	1.9	1/2
25	58	67	30	12	143	97	65	25	39	58	M6	2.3	3/4
32	68	73	36	12	150	97	71	25	39	58	M6	2.9	1
40	84	90	44	15	171	128	85	45	54	74	M8	3.7	1 1/4
50	97	97	51	15	191	128	89	45	54	74	M8	4.6	1 1/2
63	124	116	64	15	220	152	101	45	66	87	M8	5.8	2
75	166	149	85	15	266	270	136	70	64	206	M8	6.8	2 1/2
90	200	161	105	15	264	270	141	70	64	206	M8	8.2	3
110	238	178	123	22	301	320	164	120	64	256	M12	10.0	4

A



DN10/15 - 50



**Type 546 True Union Ball Valve-PROGEF Standard  
ANSI Flanged**

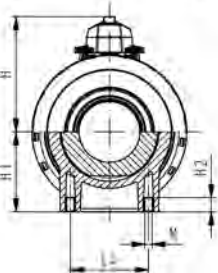
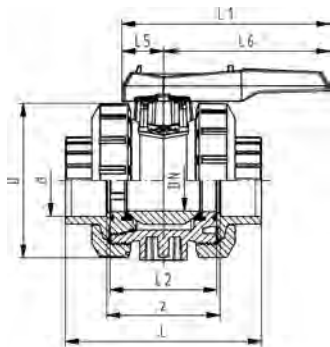
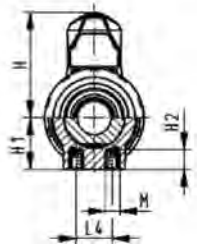
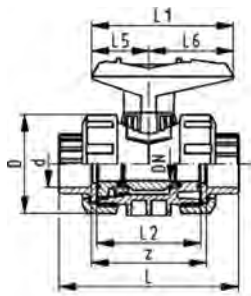
Size (inch)	EPDM Part No.	USD	FKM Part No.	USD	weight (lb)
½	^ 167 546 582	158.00	^ 167 546 592	177.00	1.455
¾	^ 167 546 583	171.00	^ 167 546 593	200.00	1.521
1	^ 167 546 584	211.00	^ 167 546 594	242.00	1.896
1 ¼	^ 167 546 585	288.00	^ 167 546 595	305.00	0.002
1 ½	^ 167 546 586	321.00	^ 167 546 596	360.00	3.891
2	^ 167 546 587	402.00	^ 167 546 597	434.00	5.512
2 ½	^ 167 546 588	792.00	^ 167 546 598	951.00	8.157
3	^ 167 546 589	1,000.00	^ 167 546 599	1,189.00	12.125
4	^ 167 546 590	1,205.00	^ 167 546 600	1,426.00	0.002

Size (inch)	D (mm)	D3 (mm)	H (mm)	H1 (mm)	H2 (mm)	L (mm)	L1 (mm)	L2 (mm)	L4 (mm)	L5 (mm)	L6 (mm)	M (mm)
½	50	16	57	26	12	166	77	56	25	32	45	6
¾	58	16	67	30	12	177	97	65	25	39	58	6
1	68	16	73	36	12	191	97	71	25	39	58	6
1 ¼	84	16	90	44	15	209	128	85	45	54	74	6
1 ½	97	16	97	51	15	229	128	89	45	54	74	6
2	124	16	116	64	15	253	152	101	45	66	87	6
2 ½	166	19	149	85		416	379	136	70	64	206	8
3	200	19	161	105		414	419	141	70	64	506	8
4	238	19	178	123		451	456	164	120	64	206	12

A



DN10/15 - 50



**Type 546 Ball Valve PROGEF® Plus silicone free**  
**With mounting inserts**  
**Socket Fusion with PTFE seats, metric**

**Model:**

- For easy installation and removal
- Ball seals PVDF
- Integrated stainless steel mounting inserts

**Option:**

- Individual configuration of the valve (see diagram)
- Multifunctional module with integrated limit switches

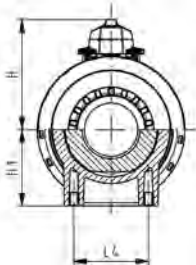
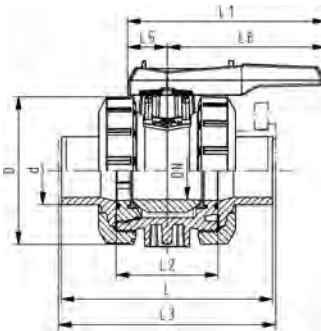
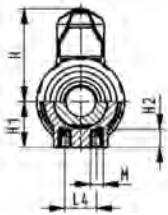
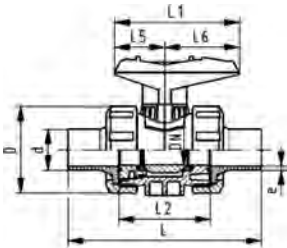
d (mm)	EPDM Part No.	USD	FKM Part No.	USD
16	167 546 601	82.00	167 546 611	99.00
20	167 546 602	83.00	167 546 612	98.00
25	167 546 603	97.00	167 546 613	115.00
32	167 546 604	120.00	167 546 614	146.00
40	167 546 605	148.00	167 546 615	177.00
50	167 546 606	191.00	167 546 616	235.00
63	167 546 607	234.00	167 546 617	294.00
75	167 546 608	555.00	167 546 618	673.00
90	167 546 609	689.00	167 546 619	841.00
110	167 546 610	822.00	167 546 620	1,006.00

d (mm)	D (mm)	H (mm)	H1 (mm)	H2 (mm)	L (mm)	L1 (mm)	L2 (mm)	L4 (mm)	L5 (mm)	L6 (mm)	M	z (mm)	closest inch (inch)
16	50	57	27	12	93	77	56	25	32	45	M6	67	3/8
20	50	57	27	12	95	77	56	25	32	45	M6	66	1/2
25	58	67	30	12	108	97	65	25	39	58	M6	77	3/4
32	68	73	36	12	118	97	71	25	39	58	M6	83	1
40	84	90	44	15	137	128	85	45	54	74	M8	99	1 1/4
50	97	97	51	15	147	128	89	45	54	74	M8	105	1 1/2
63	124	116	64	15	168	152	101	45	66	87	M8	117	2
75	166	149	85	15	233	270	136	70	64	206	M8	167	2 1/2
90	200	161	105	15	254	270	141	70	64	206	M8	180	3
110	238	178	123	22	301	320	164	120	64	256	M12	215	4

A



DN10/15 - 50



**PROGEF Plus silicone free  
Ball valve Type 546  
With mounting inserts, With butt fusion spigots, metric**

**Model:**

- For easy installation and removal
- Ball seals PVDF
- Integrated stainless steel mounting inserts

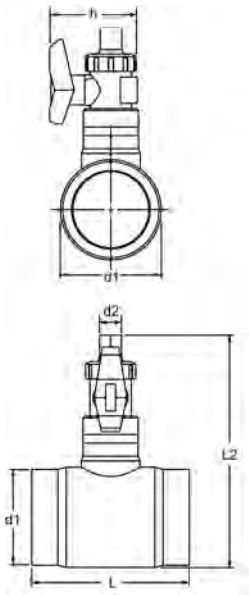
**Option:**

- Individual configuration of the valve (see diagram)
- Multifunctional module with integrated limit switches

d (mm)	EPDM Part No.	USD	FKM Part No.	USD
20	167 546 662	109.00	167 546 672	131.00
25	167 546 663	134.00	167 546 673	156.00
32	167 546 664	162.00	167 546 674	193.00
40	167 546 665	219.00	167 546 675	234.00
50	167 546 666	245.00	167 546 676	297.00
63	167 546 667	301.00	167 546 677	386.00
75	167 546 668	604.00	167 546 678	739.00
90	167 546 669	750.00	167 546 679	921.00
110	167 546 670	900.00	167 546 680	1,106.00

d (mm)	D (mm)	H (mm)	H1 (mm)	H2 (mm)	L (mm)	L1 (mm)	L2 (mm)	L4 (mm)	L5 (mm)	L6 (mm)	M	e (mm)	closest inch (inch)
20	50	57	27	12	130	77	56	25	32	45	M6	1.9	1/2
25	58	67	30	12	143	97	65	25	39	58	M6	2.3	3/4
32	68	73	36	12	150	97	71	25	39	58	M6	2.9	1
40	84	90	44	15	171	128	85	45	54	74	M8	3.7	1 1/4
50	97	97	51	15	191	128	89	45	54	74	M8	4.6	1 1/2
63	124	116	64	15	220	152	101	45	66	87	M8	5.8	2
75	166	149	85	15	266	270	136	70	64	206	M8	6.8	2 1/2
90	200	161	105	15	264	270	141	70	64	206	M8	8.2	3
110	238	178	123	22	301	320	164	120	64	256	M12	10.0	4

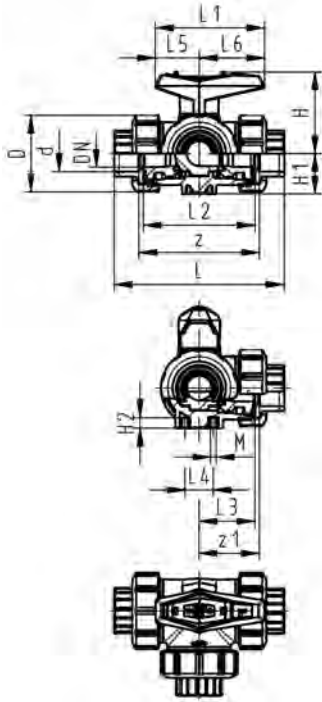
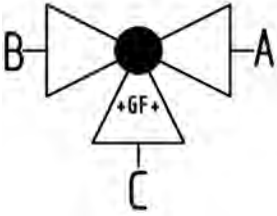
A



### Tee Valves PROGEF-PP

Tee Valve Size (mm)	FKM Part No.	USD	EPDM Part No.	USD	d1 (mm)	d2 (mm)	L (mm)	L2 (mm)	h (mm)
25 - 25	157 319 203	262.18	157 319 103	254.92	25	25	84	148	99
32 - 25	157 319 204	262.18	157 319 104	254.92	32	25	92	152	99
50 - 25	157 319 205	341.97	157 319 105	254.92	50	25	116	165	99
63 - 25	^ 157 319 206	497.00	^ 157 319 106	482.00	63	25	132	211	97
63 - 32	^ 157 319 207	497.00	^ 157 319 107	482.00	63	32	132	247	109
90 - 25	^ 157 319 220	549.00	^ 157 319 120	534.00	90	25	160	247	97
90 - 32	^ 157 319 210	549.00	^ 157 319 110	534.00	90	32	160	281	109
110 - 25	^ 157 319 221	581.00	^ 157 319 121	563.00	110	25	180	266	97
110 - 32	^ 157 319 213	581.00	^ 157 319 113	563.00	110	32	180	301	109
160 - 32	^ 157 319 223	779.00	^ 157 319 123	749.00	160	32	180	366	109
160 - 25	157 319 222	801.04	157 319 122	791.71	160	25	284	237	99
160 - 63	^ 157 319 224	868.00	^ 157 319 124	838.00	160	63	284	418	180

A

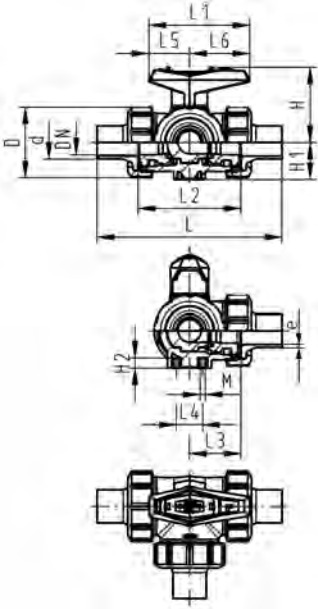
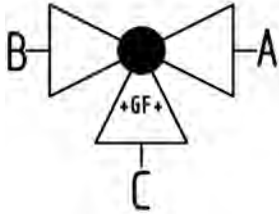


**Type 543 3-Way Ball Valve**  
**Horizontal/L-port PROGEF Standard**  
**With fusion sockets metric**

d (mm)	EPDM Part No.	USD	FKM Part No.	USD	weight (lb)
16	167 543 001	184.00	167 543 011	219.00	0.355
20	167 543 002	187.00	167 543 012	224.00	0.364
25	167 543 003	213.00	167 543 013	260.00	0.522
32	167 543 004	269.00	167 543 014	332.00	0.796
40	167 543 005	301.00	167 543 015	364.00	1.358
50	167 543 006	356.00	167 543 016	442.00	2.011
63	167 543 007	428.00	167 543 017	554.00	4.149

d (mm)	D (mm)	L (mm)	L1 (mm)	L2 (mm)	L3 (mm)	L4 (mm)	L5 (mm)	L6 (mm)	H (mm)	H1 (mm)	H2 (mm)	M	z (mm)	z1 (mm)	closest inch (inch)
16	50	110	77	72	36	25	32	45	57	28	8	6	82	41	3/8
20	50	112	77	72	36	25	32	45	57	28	8	6	82	41	1/2
25	58	129	97	85	43	25	39	58	67	32	8	6	97	49	3/4
32	68	146	97	98	49	25	39	58	73	36	8	6	110	55	1
40	84	170	128	118	59	45	54	74	90	45	9	8	132	66	1 1/4
50	97	193	128	135	68	45	54	74	97	51	9	8	151	76	1 1/2
63	124	244	152	176	88	45	66	87	116	65	9	8	188	94	2

A

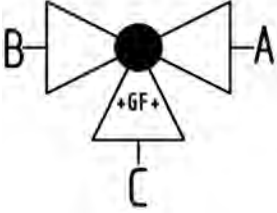


**Type 543 3-Way Ball Valve**  
**Horizontal/L-port PROGEF Standard**  
**With butt fusion spigots IR-Plus**  
**SDR11 metric**

d (mm)	EPDM Part No.	USD	FKM Part No.	USD	weight (lb)
20	167 543 062	200.00	167 543 072	242.00	0.377
25	167 543 063	224.00	167 543 073	277.00	0.545
32	167 543 064	286.00	167 543 074	349.00	0.831
40	167 543 065	321.00	167 543 075	389.00	1.387
50	167 543 066	378.00	167 543 076	470.00	2.101
63	167 543 067	466.00	167 543 077	599.00	4.090

d (mm)	D (mm)	L (mm)	L1 (mm)	L2 (mm)	L3 (mm)	L4 (mm)	L5 (mm)	L6 (mm)	H (mm)	H1 (mm)	H2 (mm)	M (mm)	e (mm)	closest inch (inch)
20	50	146	77	72	36	25	32	45	57	28	8	6	1.9	1/2
25	58	163	97	85	43	25	39	58	67	32	8	6	2.3	3/4
32	68	178	97	98	49	25	39	58	73	36	8	6	2.9	1
40	84	204	128	118	59	45	54	74	90	45	9	8	3.7	1 1/4
50	97	237	128	135	68	45	54	74	97	51	9	8	4.6	1 1/2
63	124	296	152	176	88	45	66	87	116	65	9	8	5.8	2

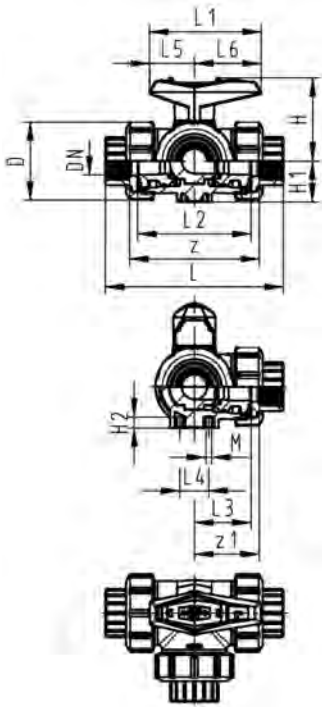
A



**Type 543 3-Way Ball Valve**  
**Horizontal/L-port PROGEF Standard**  
**With threaded sockets NPT reinforced**

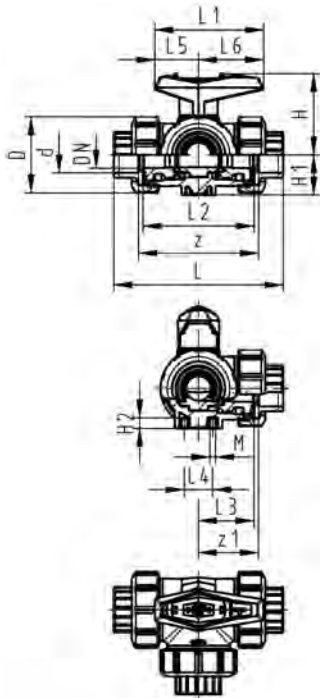
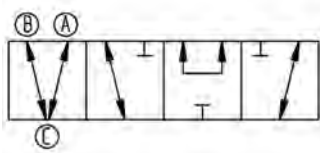
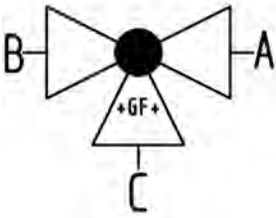
NPT (inch)	EPDM Part No.	USD	FKM Part No.	USD	weight (lb)
3/8	167 543 161	195.00	167 543 171	239.00	0.355
1/2	167 543 162	200.00	167 543 172	243.00	0.364
3/4	167 543 163	224.00	167 543 173	277.00	0.522
1	167 543 164	286.00	167 543 174	348.00	0.796
1 1/4	167 543 165	321.00	167 543 175	389.00	1.358
1 1/2	167 543 166	378.00	167 543 176	470.00	2.011
2	167 543 167	461.00	167 543 177	599.00	3.909

NPT (inch)	D (mm)	L (mm)	L1 (mm)	L2 (mm)	L3 (mm)	L4 (mm)	L5 (mm)	L6 (mm)	H (mm)	H1 (mm)	H2 (mm)	M (mm)	z (mm)	z1 (mm)
3/8	50	112	77	72	36	25	32	45	57	28	8	6	86	43
1/2	50	114	77	72	36	25	32	45	57	28	8	6	80	40
3/4	58	131	97	85	43	25	39	58	67	32	8	6	95	48
1	68	154	97	98	49	25	39	58	73	36	8	6	110	55
1 1/4	84	180	128	118	59	45	54	74	90	45	9	8	132	66
1 1/2	97	203	128	135	68	45	54	74	97	51	9	8	157	79
2	124	258	152	176	88	45	66	87	116	65	9	8	210	105





A



**Type 543 3-Way Ball Valve**  
**Horizontal/T-port PROGEF Standard**  
**With fusion sockets metric**

d (mm)	EPDM Part No.	USD	FKM Part No.	USD	weight (lb)
16	167 543 201	184.00	167 543 211	219.00	0.353
20	167 543 202	187.00	167 543 212	224.00	0.362
25	167 543 203	213.00	167 543 213	261.00	0.520
32	167 543 204	269.00	167 543 214	332.00	0.787
40	167 543 205	301.00	167 543 215	364.00	1.343
50	167 543 206	356.00	167 543 216	439.00	1.980
63	167 543 207	428.00	167 543 217	555.00	4.094

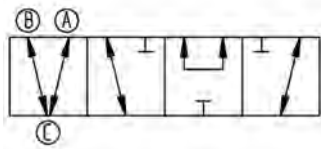
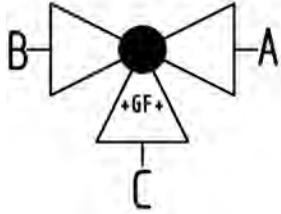
d (mm)	D (mm)	L (mm)	L1 (mm)	L2 (mm)	L3 (mm)	L4 (mm)	L5 (mm)	L6 (mm)	H (mm)	H1 (mm)	H2 (mm)	M	z (mm)	z1 (mm)	closest inch (inch)
16	50	110	77	72	36	25	32	45	57	28	8	6	82	41	3/8
20	50	112	77	72	36	25	32	45	57	28	8	6	82	41	1/2
25	58	129	97	85	43	25	39	58	67	32	8	6	97	49	3/4
32	68	146	97	98	49	25	39	58	73	36	8	6	110	55	1
40	84	170	128	118	59	45	54	74	90	45	9	8	132	66	1 1/4
50	97	193	128	135	68	45	54	74	97	51	9	8	151	76	1 1/2
63	124	244	152	176	88	45	66	87	116	65	9	8	188	94	2

A

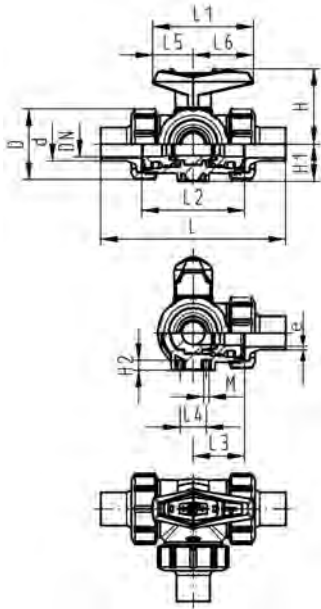


**Type 543 3-Way Ball Valve**  
**Horizontal/T-port PROGEF Standard**  
**With butt fusion spigots IR-Plus**  
**SDR11 metric**

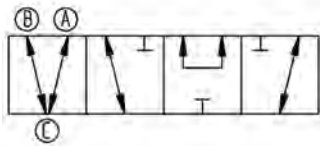
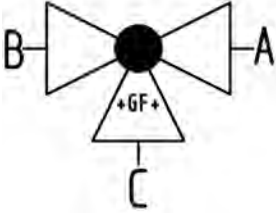
d (mm)	EPDM Part No.	USD	FKM Part No.	USD	weight (lb)
20	167 543 262	200.00	167 543 272	243.00	0.375
25	167 543 263	224.00	167 543 273	277.00	0.540
32	167 543 264	286.00	167 543 274	348.00	0.820
40	167 543 265	321.00	167 543 275	389.00	1.371
50	167 543 266	378.00	167 543 276	470.00	2.070
63	167 543 267	462.00	167 543 277	599.00	4.026



d (mm)	D (mm)	L (mm)	L1 (mm)	L2 (mm)	L3 (mm)	L4 (mm)	L5 (mm)	L6 (mm)	H (mm)	H1 (mm)	H2 (mm)	M (mm)	e (mm)	closest inch (inch)
20	50	146	77	72	36	25	32	45	57	28	8	6	1.9	1/2
25	58	163	97	85	43	25	39	58	67	32	8	6	2.3	3/4
32	68	178	97	98	49	25	39	58	73	36	8	6	2.9	1
40	84	204	128	118	59	45	54	74	90	45	9	8	3.7	1 1/4
50	97	237	128	135	68	45	54	74	97	51	9	8	4.6	1 1/2
63	124	296	152	176	88	45	66	87	116	65	9	8	5.8	2



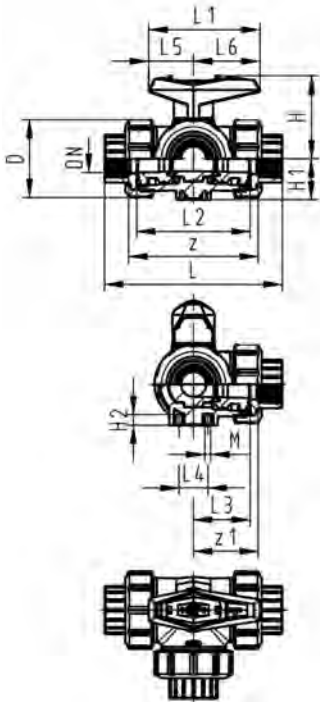
A



**Type 543 3-Way Ball Valve**  
**Horizontal/T-port PROGEF Standard**  
**With threaded sockets NPT reinforced**

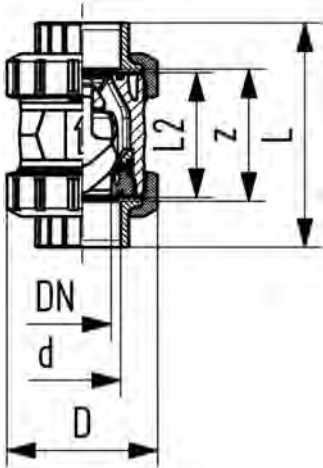
NPT (inch)	EPDM Part No.	USD	FKM Part No.	USD	weight (lb)
3/8	167 543 361	175.00	167 543 371	207.00	0.353
1/2	167 543 362	175.00	167 543 372	207.00	0.362
3/4	167 543 363	193.00	167 543 373	243.00	0.520
1	167 543 364	253.00	167 543 374	322.00	0.787
1 1/4	167 543 365	322.00	167 543 375	456.00	1.343
1 1/2	167 543 366	430.00	167 543 376	596.00	1.980
2	167 543 367	487.00	167 543 377	759.00	3.845

NPT (inch)	D (mm)	L (mm)	L1 (mm)	L2 (mm)	L3 (mm)	L4 (mm)	L5 (mm)	L6 (mm)	H (mm)	H1 (mm)	H2 (mm)	M (mm)	z (mm)	z1 (mm)
3/8	50	112	77	72	36	25	32	45	57	28	8	6	86	43
1/2	50	114	77	72	36	25	32	45	57	28	8	6	80	40
3/4	58	131	97	85	43	25	39	58	67	32	8	6	95	48
1	68	154	97	98	49	25	39	58	73	36	8	6	110	55
1 1/4	84	180	128	118	59	45	54	74	90	45	9	8	132	66
1 1/2	97	203	128	135	68	45	54	74	97	51	9	8	157	79
2	124	258	152	176	88	45	66	87	116	65	9	8	210	105



A

**Check valve type 561 PROGEF Standard  
With fusion sockets metric**

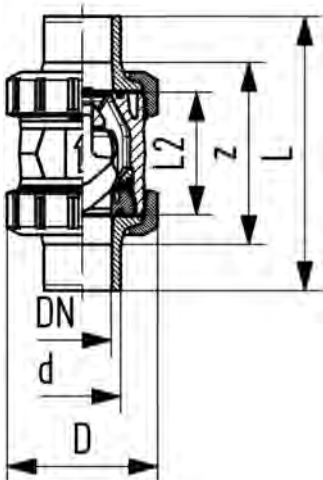


d (mm)	EPDM Part No.	USD	FKM Part No.	USD	weight (lb)
16	167 561 001	73.00	167 561 011	82.00	0.176
20	167 561 002	82.00	167 561 012	90.00	0.176
25	167 561 003	90.00	167 561 013	101.00	0.397
32	167 561 004	109.00	167 561 014	121.00	0.419
40	167 561 005	129.00	167 561 015	141.00	0.750
50	167 561 006	154.00	167 561 016	181.00	1.058
63	167 561 007	228.00	167 561 017	279.00	2.147
75	^ 167 561 008	484.00	^ 167 561 018	581.00	5.093
90	^ 167 561 009	605.00	^ 167 561 019	727.00	7.893
110	^ 167 561 010	1,137.00	^ 167 561 020	1,175.00	13.073

d (mm)	D (mm)	L (mm)	L2 (mm)	z (mm)	closest inch (inch)
16	50	93	56	67	3/8
20	50	95	56	66	1/2
25	58	109	65	77	3/4
32	68	119	71	83	1
40	84	135	85	99	1 1/4
50	97	147	89	105	1 1/2
63	124	168	101	117	2
75	166	233	136	167	2 1/2
90	200	254	141	180	3
110	238	301	164	215	4

A

**Check valve type 561 PROGEF Standard  
With butt fusion spigots IR-Plus  
SDR11 metric**



d (mm)	EPDM Part No.	USD	FKM Part No.	USD	weight (lb)
20	167 561 082	86.00	167 561 092	91.00	0.176
25	167 561 083	90.00	167 561 093	102.00	0.397
32	167 561 084	109.00	167 561 094	121.00	0.419
40	167 561 085	129.00	167 561 095	141.00	0.750
50	167 561 086	160.00	167 561 096	181.00	1.080
63	167 561 087	250.00	167 561 097	279.00	2.264
75	^ 167 561 088	545.00	^ 167 561 098	656.00	5.203
90	^ 167 561 089	684.00	^ 167 561 099	821.00	8.113
110	^ 167 561 090	1,137.00	^ 167 561 100	1,175.00	12.853

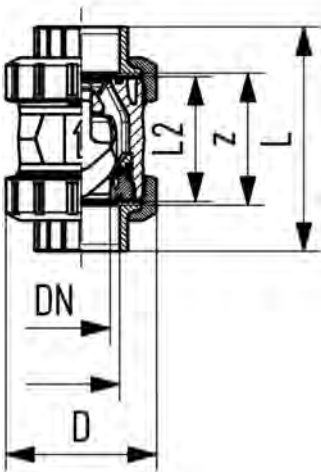
d (mm)	D (mm)	L (mm)	L2 (mm)	e (mm)	closest inch (inch)
20	50	130	56	1.9	1/2
25	58	143	65	2.3	3/4
32	68	150	71	2.9	1
40	84	171	85	3.7	1 1/4
50	97	191	89	4.6	1 1/2
63	124	220	101	5.8	2
75	166	266	136	6.8	2 1/2
90	200	264	141	8.2	3
110	238	301	164	10.0	4

A



**Check valve type 561 PROGEF Standard**  
**With threaded sockets reinforced NPT**

NPT (inch)	EPDM Part No.	USD	FKM Part No.	USD	weight (lb)	D (mm)	L (mm)	L2 (mm)	z (mm)
3/8	167 561 101	86.00	167 561 111	90.00	0.176	50	96	56	71
1/2	167 561 102	86.00	167 561 112	90.00	0.198	50	99	56	64
3/4	167 561 103	101.00	167 561 113	109.00	0.397	58	111	65	76
1	167 561 104	121.00	167 561 114	129.00	0.463	68	127	71	83
1 1/4	167 561 105	129.00	167 561 115	141.00	0.794	84	146	85	100
1 1/2	167 561 106	178.00	167 561 116	201.00	1.124	97	157	89	111
2	167 561 107	263.00	167 561 117	309.00	2.028	124	183	101	134



A

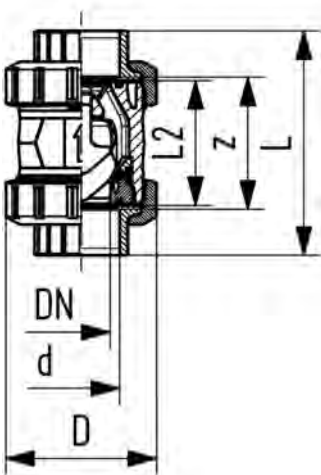


**Check valve type 561**  
**PROGEF Plus silicone free**  
**With fusion sockets metric**

**Model:**

- Sealing at a minimum water column of 2 m
- Designed for easy installation and removal
- Vibration free even at high flow velocity
- Flow-optimized return cone, double guided
- For vertical installation
- Compact installation length, same as ball valve type 546

d (mm)	EPDM Part No.	USD	FKM Part No.	USD	D (mm)	L (mm)	L2 (mm)	z (mm)	closest inch (inch)
16	*167 561 201	92.00	*167 561 211	102.00	50	93	56	67	3/8
20	*167 561 202	92.00	*167 561 212	102.00	50	95	56	66	1/2
25	*167 561 203	121.00	*167 561 213	129.00	58	109	65	77	3/4
32	*167 561 204	141.00	*167 561 214	160.00	68	119	71	83	1
40	*167 561 205	160.00	*167 561 215	181.00	84	135	85	99	1 1/4
50	*167 561 206	189.00	*167 561 216	212.00	97	147	89	105	1 1/2
63	*167 561 207	309.00	*167 561 217	342.00	124	168	101	117	2
75	*167 561 208	581.00	*167 561 218	778.00	166	233	136	167	2 1/2
90	*167 561 209	727.00	*167 561 219	973.00	200	254	141	180	3
110	*167 561 210	1,310.00	*167 561 220	1,352.00	238	301	164	215	4



A

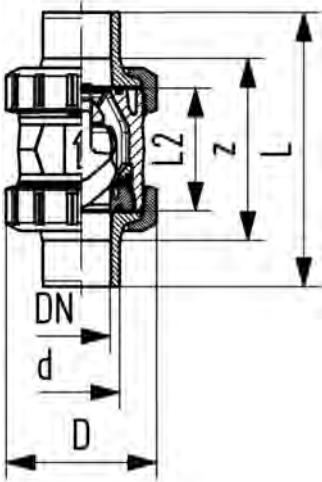


**Check valve type 561**  
**PROGEF Plus silicone free**  
**With butt fusion spigots IR-Plus**  
**SDR11 metric**

**Model:**

- Sealing at a minimum water column of 2 m
- Designed for easy installation and removal
- Vibration free even at high flow velocity
- Flow-optimized return cone, double guided
- For vertical installation
- Compact installation length, same as ball valve type 546

d (mm)	EPDM Part No.	USD	FKM Part No.	USD	D (mm)	L (mm)	L2 (mm)	e (mm)	closest inch (inch)
20	* 167 561 242	107.00	* 167 561 252	114.00	50	130	56	1.9	½
25	* 167 561 243	121.00	* 167 561 253	131.00	58	143	65	2.3	¾
32	* 167 561 244	140.00	* 167 561 254	160.00	68	150	71	3.0	1
40	* 167 561 245	160.00	* 167 561 255	181.00	84	171	85	3.7	1 ¼
50	* 167 561 246	201.00	* 167 561 256	220.00	97	191	89	4.6	1 ½
63	* 167 561 247	250.00	* 167 561 257	280.00	124	220	101	5.8	2
75	* 167 561 248	656.00	* 167 561 258	788.00	166	266	136	6.8	2 ½
90	* 167 561 249	821.00	* 167 561 259	984.00	200	264	141	8.2	3
110	* 167 561 250	1,318.00	* 167 561 260	1,357.00	238	301	164	10.0	4



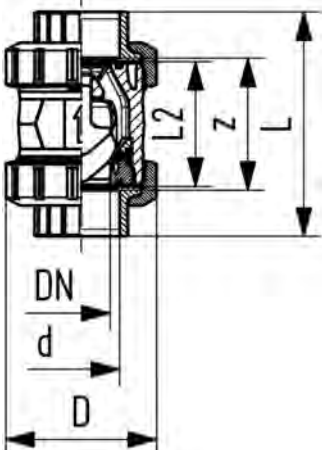
A



**Check valve type 562 PROGEF Standard**  
**With fusion sockets metric**

d (mm)	EPDM Part No.	USD	FKM Part No.	USD	weight (lb)
16	167 562 001	120.00	167 562 011	143.00	0.176
20	167 562 002	120.00	167 562 012	143.00	0.176
25	167 562 003	128.00	167 562 013	151.00	0.397
32	167 562 004	144.00	167 562 014	167.00	0.419
40	167 562 005	169.00	167 562 015	198.00	0.750
50	167 562 006	194.00	167 562 016	227.00	1.058
63	167 562 007	285.00	167 562 017	333.00	1.940
75	^ 167 562 008	568.00	^ 167 562 018	664.00	5.093
90	^ 167 562 009	710.00	^ 167 562 019	829.00	7.893
110	^ 167 562 010	1,594.00	^ 167 562 020	1,644.00	13.073

d (mm)	D (mm)	L (mm)	L2 (mm)	z (mm)	closest inch (inch)
16	50	93	56	67	¾
20	50	95	56	66	½
25	58	109	65	77	¾
32	68	119	71	83	1
40	84	135	85	99	1 ¼
50	97	147	89	105	1 ½
63	124	168	101	117	2
75	166	233	136	167	2 ½
90	200	254	141	180	3
110	238	301	164	215	4

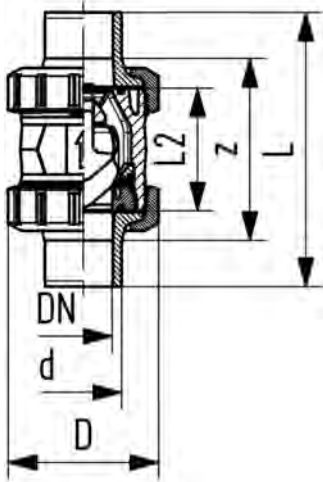


A



**Check valve type 562 PROGEF Standard  
With butt fusion spigots metric**

d (mm)	EPDM Part No.	USD	FKM Part No.	USD	weight (lb)
20	167 562 082	134.00	167 562 092	156.00	0.176
25	167 562 083	143.00	167 562 093	166.00	0.397
32	167 562 084	155.00	167 562 094	185.00	0.419
40	167 562 085	185.00	167 562 095	218.00	0.750
50	167 562 086	211.00	167 562 096	247.00	1.080
63	167 562 087	303.00	167 562 097	357.00	2.050
75	^ 167 562 088	590.00	^ 167 562 098	698.00	5.203
90	^ 167 562 089	767.00	^ 167 562 099	904.00	8.113
110	^ 167 562 090	1,594.00	^ 167 562 100	1,644.00	12.853



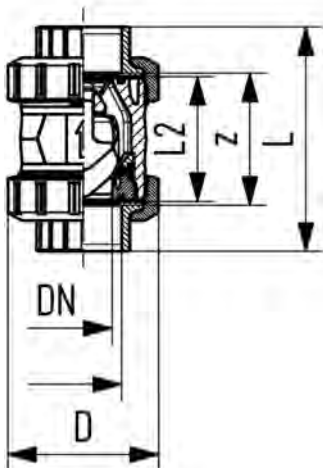
d (mm)	D (mm)	L (mm)	L2 (mm)	e (mm)	closest inch (inch)
20	50	130	56	1.9	½
25	58	143	65	2.3	¾
32	68	150	71	2.9	1
40	84	171	85	3.7	1 ¼
50	97	191	89	4.6	1 ½
63	124	220	101	5.8	2
75	166	266	136	6.8	2 ½
90	200	264	141	8.2	3
110	238	301	164	10.0	4

A



**Check valve type 562 PROGEF Standard  
With threaded sockets reinforced NPT**

NPT (inch)	EPDM Part No.	USD	FKM Part No.	USD	weight (lb)	D (mm)	L (mm)	L2 (mm)	z (mm)
¾	167 562 101	136.00	167 562 111	160.00	0.176	50	96	56	71
½	167 562 102	136.00	167 562 112	160.00	0.198	50	99	56	64
¾	167 562 103	146.00	167 562 113	171.00	0.397	58	111	65	76
1	167 562 104	161.00	167 562 114	188.00	0.463	68	127	71	83
1 ¼	167 562 105	191.00	167 562 115	225.00	0.794	84	146	85	100
1 ½	167 562 106	219.00	167 562 116	257.00	1.124	97	157	89	111
2	167 562 107	319.00	167 562 117	377.00	2.028	124	183	101	134



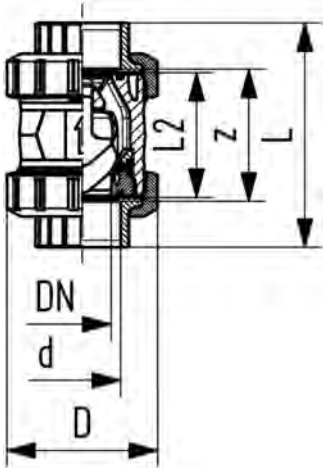
A



**Check valve type 562 PROGEF Standard silicone free  
With fusion sockets metric**

**Model:**

- For horizontal or vertical installation
- Sealing at a minimum water column of 1m
- Spring loaded, spring made of stainless steel (1.4310)
- Spring available in other materials, see spare parts
- Designed for easy installation and removal
- Vibration free even at high flow velocity
- Flow-optimized return cone, double guided
- Compact installation length, same as ball valve type 546



d (mm)	EPDM Part No.	USD	FKM Part No.	USD	D (mm)	L (mm)	L2 (mm)	z (mm)	closest inch (inch)
16	* 167 562 201	143.00	* 167 562 211	154.00	50	93	56	67	¾
20	* 167 562 202	143.00	* 167 562 212	154.00	50	95	56	66	½
25	* 167 562 203	151.00	* 167 562 213	179.00	58	109	65	77	¾
32	* 167 562 204	167.00	* 167 562 214	191.00	68	119	71	83	1
40	* 167 562 205	198.00	* 167 562 215	235.00	84	135	85	99	1 ¼
50	* 167 562 206	227.00	* 167 562 216	286.00	97	147	89	105	1 ½
63	* 167 562 207	333.00	* 167 562 217	431.00	124	168	101	117	2
75	* 167 562 208	664.00	* 167 562 218	860.00	166	233	136	167	2 ½
90	* 167 562 209	829.00	* 167 562 219	1,075.00	200	254	141	180	3
110	* 167 562 210	1,833.00	* 167 562 220	1,891.00	238	301	164	215	4

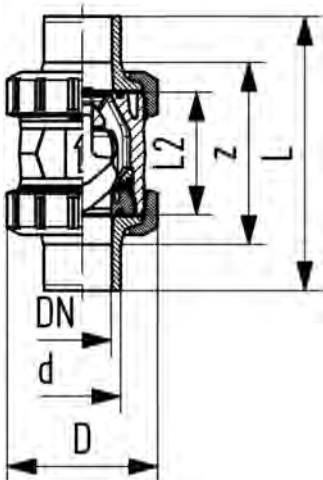
A



**Check valve type 562 PROGEF Standard silicone free  
With butt fusion spigots metric**

**Model:**

- For horizontal or vertical installation
- Sealing at a minimum water column of 1m
- Spring loaded, spring made of stainless steel (1.4310)
- Spring available in other materials, see spare parts
- Designed for easy installation and removal
- Vibration free even at high flow velocity
- Flow-optimized return cone, double guided
- Compact installation length, same as ball valve type 546

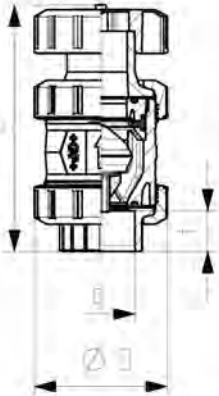


d (mm)	EPDM Part No.	USD	FKM Part No.	USD	D (mm)	L (mm)	L2 (mm)	e (mm)	closest inch (inch)
20	* 167 562 242	156.00	* 167 562 252	186.00	50	130	56	1.9	¾
25	* 167 562 243	168.00	* 167 562 253	198.00	58	143	65	2.3	¾
32	* 167 562 244	186.00	* 167 562 254	219.00	68	150	71	3.0	1
40	* 167 562 245	221.00	* 167 562 255	261.00	84	171	85	3.7	1 ¼
50	* 167 562 246	253.00	* 167 562 256	297.00	97	191	89	4.6	1 ½
63	* 167 562 247	369.00	* 167 562 257	435.00	124	220	101	5.8	2
75	* 167 562 248	740.00	* 167 562 258	871.00	166	266	136	8.2	2 ½
90	* 167 562 249	924.00	* 167 562 259	1,090.00	200	264	141	9.9	3
110	* 167 562 250	1,846.00	* 167 562 260	1,909.00	238	301	164	12.0	4



A

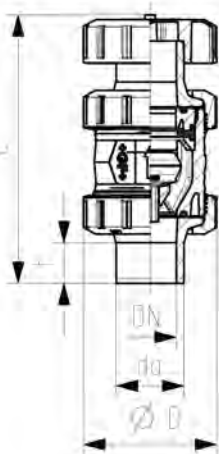
**Type 591 PROGEF Standard  
Ventilating and bleed valve  
With fusion sockets metric**



d (mm)	EPDM Part No.	USD	FKM Part No.	USD	weight (lb)	D (mm)	L (mm)	t (mm)	closest inch (inch)
16	^ 167 591 001	157.00	^ 167 591 011	190.00	0.214	50	126	14	3/8
20	167 591 002	157.00	167 591 012	190.00	0.214	50	127	15	1/2
25	^ 167 591 003	197.00	^ 167 591 013	235.00	0.448	58	142	16	3/4
32	167 591 004	248.00	167 591 014	297.00	0.494	68	153	18	1
40	^ 167 591 005	295.00	^ 167 591 015	353.00	0.864	84	171	19	1 1/4
50	167 591 006	418.00	167 591 016	501.00	1.210	97	190	21	1 1/2
63	167 591 007	613.00	167 591 017	736.00	2.174	124	219	28	2
75	* 167 591 008	982.00	* 167 591 018	1,178.00	5.093	166	256	29	2 1/2
90	* 167 591 009	1,228.00	* 167 591 019	1,473.00	7.893	200	275	33	3
110	* 167 591 010	1,473.00	* 167 591 020	1,768.00	13.073	238	318	39	4

A

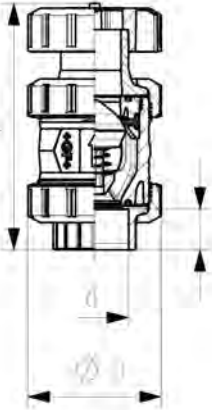
**Type 591 PROGEF Standard  
Ventilating and bleed valve  
With socket fusion spigots metric**



d (mm)	EPDM Part No.	USD	FKM Part No.	USD	weight (lb)	D (mm)	L (mm)	t (mm)	closest inch (inch)
16	^ 167 591 041	157.00	^ 167 591 051	190.00	0.214	50	135	13	3/8
20	167 591 042	157.00	167 591 052	190.00	0.236	50	140	14	1/2
25	^ 167 591 043	197.00	^ 167 591 053	235.00	0.470	58	157	16	3/4
32	167 591 044	248.00	167 591 054	297.00	0.516	68	168	18	1
40	^ 167 591 045	295.00	^ 167 591 055	353.00	0.886	84	189	20	1 1/4
50	167 591 046	418.00	167 591 056	501.00	1.276	97	211	23	1 1/2
63	167 591 047	613.00	167 591 057	736.00	2.328	124	245	27	2
75	* 167 591 048	982.00	* 167 591 058	1,178.00	5.225	166	280	48	2 1/2
90	* 167 591 049	1,228.00	* 167 591 059	1,473.00	8.267	200	296	49	3
110	* 167 591 050	1,473.00	* 167 591 060	1,768.00	13.184	238	336	54	4

A

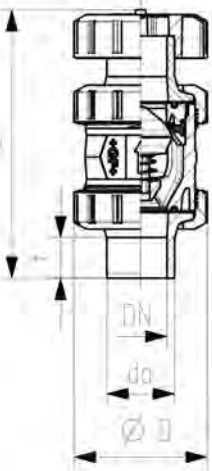
**Type 595 PROGEF Standard  
Ventilating valve  
With fusion sockets metric**



d (mm)	EPDM Part No.	USD	FKM Part No.	USD	weight (lb)	D (mm)	L (mm)	t (mm)	closest inch (inch)
16	^ 167 595 001	183.00	^ 167 595 011	214.00	0.214	50	126	14	3/8
20	167 595 002	183.00	167 595 012	214.00	0.214	50	127	15	1/2
25	^ 167 595 003	228.00	^ 167 595 013	269.00	0.448	58	142	16	3/4
32	167 595 004	288.00	167 595 014	339.00	0.494	68	153	18	1
40	^ 167 595 005	344.00	^ 167 595 015	402.00	0.864	84	171	19	1 1/4
50	167 595 006	494.00	167 595 016	575.00	1.210	97	190	21	1 1/2
63	167 595 007	718.00	167 595 017	842.00	2.174	124	219	28	2
75	* 167 595 008	1,149.00	* 167 595 018	1,349.00	5.093	166	256	29	2 1/2
90	* 167 595 009	1,440.00	* 167 595 019	1,683.00	7.893	200	275	33	3
110	* 167 595 010	1,726.00	* 167 595 020	2,020.00	13.073	238	318	39	4

A

**Type 595 PROGEF Standard  
Ventilating valve  
With socket fusion spigots metric**



d (mm)	EPDM Part No.	USD	FKM Part No.	USD	weight (lb)	D (mm)	L (mm)	t (mm)	closest inch (inch)
16	^ 167 595 041	183.00	^ 167 595 051	214.00	0.214	50	135	13	3/8
20	167 595 042	183.00	167 595 052	214.00	0.236	50	140	14	1/2
25	^ 167 595 043	228.00	^ 167 595 053	269.00	0.470	58	157	16	3/4
32	167 595 044	288.00	167 595 054	339.00	0.516	68	168	18	1
40	^ 167 595 045	344.00	^ 167 595 055	402.00	0.886	84	189	20	1 1/4
50	167 595 046	494.00	167 595 056	575.00	1.276	97	211	23	1 1/2
63	167 595 047	718.00	167 595 057	842.00	2.328	124	245	27	2
75	* 167 595 048	1,149.00	* 167 595 058	1,349.00	5.225	166	280	48	2 1/2
90	* 167 595 049	1,440.00	* 167 595 059	1,683.00	8.267	200	296	49	3
110	* 167 595 050	1,726.00	* 167 595 060	2,020.00	13.184	238	336	54	4

A



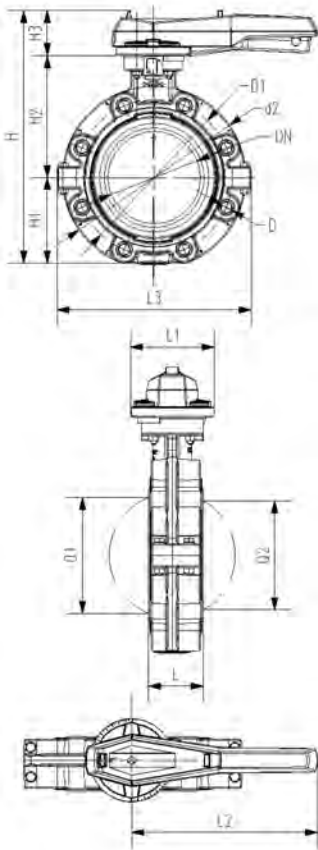
**PROGEF Standard**  
**Lugstyle butterfly valve type 578**  
**Hand lever with ratchet settings**

**Model:**

- Housing material: PP-GF30 with 316SS lug inserts
- Overall length according to EN 558, ISO 5752 (DN50 - 200 line 25, DN250 - 300 line 10)
- Connecting dimension: ANSI/ASME B 16.5 class 150, ASTM D 4024, BS 1560, BS EN 1759

**Option:**

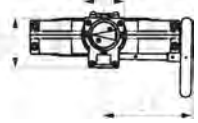
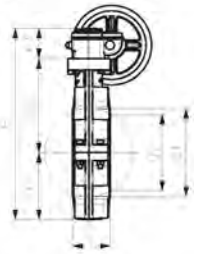
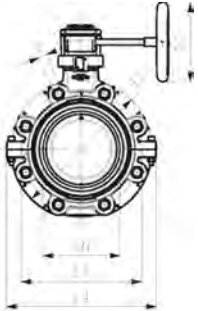
- Optional accessory: Integrated position feedback with limit switches (sold separately)



Size (inch)	DN (mm)	PN (bar)	Cv-value (l/min)	EPDM Part No.	USD	FKM Part No.	USD	weight (kg)
2	50	10	1470	167 578 102	1,013.00	167 578 122	1,081.00	1.800
2 ½	65	10	2200	167 578 103	1,231.00	167 578 123	1,374.00	1.895
3	80	10	3000	167 578 104	1,318.00	167 578 124	1,407.00	2.251
4	100	10	6500	167 578 105	1,685.00	167 578 125	1,783.00	3.146
5	125	10	11500	167 578 106	2,479.00	167 578 126	3,201.00	4.660
6	150	10	16600	167 578 107	2,479.00	167 578 127	3,201.00	6.430
8	200	10	39600	167 578 108	3,198.00	167 578 128	3,494.00	8.625
10	250	8	55200	167 578 109	4,829.00	167 578 129	5,717.00	19.528
12	300	8	80000	167 578 110	5,855.00	167 578 130	7,380.00	26.106

Size (inch)	d2 (mm)	D	D1 (mm)	H (mm)	H1 (mm)	H2 (mm)	H3 (mm)	L (mm)	L1 (mm)	L2 (mm)	L3 (mm)	Q1 (mm)	Q2 (mm)
2	160	UNC 5/8	120.6	265	77	134	54	45	106	205	165	40	
2 ½	180	UNC 5/8	139.7	277	83	140	54	46	106	205	182	54	35
3	195	UNC 5/8	152.4	289	89	146	54	49	106	205	210	67	50
4	226	UNC 5/8	190.5	326	106	167	55	56	106	255	240	88	74
5	258	UNC 3/4	215.9	357	121	181	55	64	106	255	272	113	97
6	284	UNC 3/4	241.3	377	133	189	55	72	106	255	300	139	123
8	341	UNC 3/4	298.4	436	159	210	67	73	140	408	360	178	169
10	412	UNC 7/8	362.0	536	205	264	67	113	140	408	440	210	207
12	482	UNC 7/8	431.8	586	234	285	67	113	140	408	510	256	253

A



**PROGEF Standard**  
**Lugstyle butterfly valve type 578**  
**Reduction gear with handwheel**

**Model:**

- Housing material: PP-GF30 with 316SS lug inserts
- Overall length according to EN 558, ISO 5752 (DN50 - 200 line 25, DN250 - 300 line 10)
- Connecting dimension: ANSI/ASME B 16.5 class 150, ASTM D 4024, BS 1560, BS EN 1759

**Option:**

- Optional accessory: Integrated position feedback with limit switches (sold separately)

Size (inch)	DN (mm)	PN (bar)	Cv-value (l/min)	EPDM Part No.	USD	FKM Part No.	USD	weight (kg)
2	50	10	1470	<b>167 578 142</b>	<b>1,266.00</b>	<b>167 578 162</b>	<b>1,352.00</b>	3.447
2 ½	65	10	2200	<b>167 578 143</b>	<b>1,448.00</b>	<b>167 578 163</b>	<b>1,616.00</b>	3.585
3	80	10	3000	<b>167 578 144</b>	<b>1,550.00</b>	<b>167 578 164</b>	<b>1,654.00</b>	3.929
4	100	10	6500	<b>167 578 145</b>	<b>1,873.00</b>	<b>167 578 165</b>	<b>1,982.00</b>	4.834
5	125	10	11500	<b>167 578 146</b>	<b>2,608.00</b>	<b>167 578 166</b>	<b>3,370.00</b>	6.348
6	150	10	16600	<b>167 578 147</b>	<b>2,608.00</b>	<b>167 578 167</b>	<b>3,370.00</b>	8.109
8	200	10	39600	<b>167 578 148</b>	<b>3,368.00</b>	<b>167 578 168</b>	<b>3,679.00</b>	9.353
10	250	8	55200	<b>167 578 149</b>	<b>5,083.00</b>	<b>167 578 169</b>	<b>6,131.00</b>	21.210
12	300	8	80000	<b>167 578 150</b>	<b>6,161.00</b>	<b>167 578 170</b>	<b>7,768.00</b>	27.746

Size (inch)	d2 (mm)	D	D1 (mm)	D3 (mm)	H (mm)	H1 (mm)	H2 (mm)	H3 (mm)	L (mm)	L1 (mm)	L2 (mm)	L3 (mm)	L4 (mm)	Q1 (mm)
2	160	UNC 5/8	120.6	160	273	77	134	62	45	78	112	179	165	40
2 ½	80	UNC 5/8	139.7	160	285	83	140	62	46	78	112	179	182	54
3	195	UNC 5/8	152.4	160	297	89	146	62	49	78	112	179	210	67
4	226	UNC 5/8	190.5	160	335	106	167	62	56	78	112	179	240	88
5	258	UNC 3/4	215.9	160	364	121	181	62	64	78	112	179	272	113
6	284	UNC 3/4	241.3	160	384	133	189	62	72	78	112	179	300	139
8	341	UNC 3/4	298.4	160	431	159	210	62	73	78	112	179	360	178
10	412	UNC 7/8	362.0	200	555	205	264	69	113	97	130	198	440	210
12	482	UNC 7/8	431.8	200	605	234	285	69	113	97	130	198	510	256

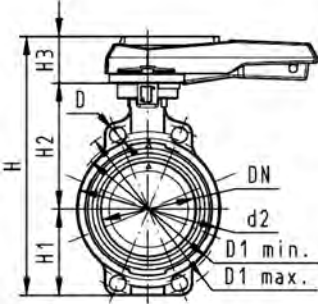
Size (inch)	Q2 (mm)
2	
2 ½	35
3	50
4	74
5	97
6	123
8	169
10	207
12	253

A

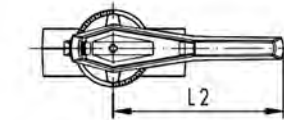
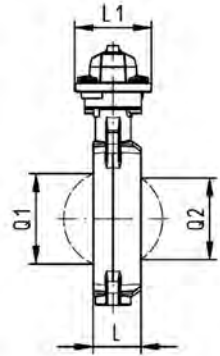


**Type 567 Butterfly valve PROGEF Standard**  
**Hand lever with ratchet settings**

d (mm)	Size (inch)	EPDM Part No.	USD	FKM Part No.	USD	weight (kg)
63	2	167 567 002	323.00	167 567 022	406.00	1.627
75	2 ½	167 567 003	359.00	167 567 023	439.00	1.061
90	3	167 567 004	405.00	167 567 024	485.00	1.404
110	4	167 567 005	491.00	167 567 025	619.00	1.998
140	5	167 567 006	699.00	167 567 026	905.00	2.429
160	6	167 567 007	699.00	167 567 027	905.00	3.246
225	8	167 567 008	900.00	167 567 028	1,056.00	5.609
280	10	167 567 009	3,098.00	167 567 029	3,612.00	11.841
315	12	167 567 010	3,838.00	167 567 030	4,494.00	13.245

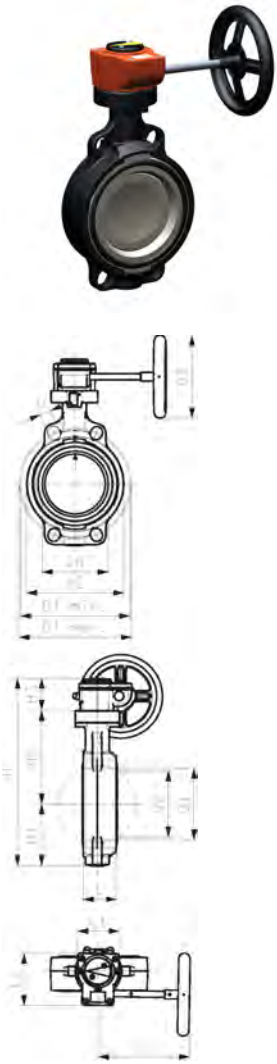


d (mm)	D (mm)	D1 min. (mm)	D1 max. (mm)	d2 (mm)	H (mm)	H1 (mm)	H2 (mm)	H3 (mm)	L (mm)	L1 (mm)	L2 (mm)	Q1 (mm)	Q2 (mm)
63	19	120	125	104	264	77	134	54	45	106	205	40	
75	19	140	145	115	277	83	140	54	46	106	205	54	35
90	19	150	160	131	289	89	146	54	49	106	205	67	50
110	19	175	191	161	325	104	167	55	56	106	255	88	74
140	23	210	216	187	352	117	181	55	64	106	255	113	97
160	24	241	241	215	373	130	189	55	72	106	255	139	123
225	23	290	295	267	435	158	210	67	73	140	408	178	169
280	25	353	362	329	554	205	264	85	113	149	408	210	207
315	25	400	432	379	598	228	285	85	113	149	408	256	253



A

**Type 567 Butterfly valve PROGEF Standard**  
**Reduction gear with handwheel**



Size (inch)	EPDM Part No.	USD	FKM Part No.	USD	weight (lb)
2	167 567 042	856.00	167 567 062	918.00	6.629
2 ½	167 567 043	903.00	167 567 063	955.00	6.832
3	167 567 044	945.00	167 567 064	1,032.00	7.119
4	167 567 045	1,032.00	167 567 065	1,126.00	8.247
5	167 567 046	1,115.00	167 567 066	1,387.00	9.354
6	167 567 047	1,115.00	167 567 067	1,387.00	11.107
8	167 567 048	1,282.00	167 567 068	1,607.00	14.416
10	167 567 049	3,399.00	167 567 069	3,926.00	28.823
12	167 567 050	4,137.00	167 567 070	4,795.00	35.419
14	* 167 567 051	7,964.00	* 167 567 071	8,834.00	88.185
16	* 167 567 052	8,834.00	* 167 567 072	9,539.00	110.231
18	* 167 567 053	12,594.00	* 167 567 073	13,909.00	154.324
20	* 167 567 054	15,889.00	* 167 567 074	18,519.00	198.416
24	* 167 567 055	20,781.00	* 167 567 075	23,526.00	275.578

D (inch)	D1 min. (inch)	D1 max. (inch)	d2 (inch)	D3 (inch)	H (inch)	H1 (inch)	H2 (inch)	H3 (inch)	L (inch)	L1 (inch)	L2 (inch)	L3 (inch)	Q1 (inch)	Q2 (inch)
1	5	5	4	6	11	3	5	2	2	3	4	7	2	
1	6	6	5	6	11	3	6	2	2	3	4	7	2	1
1	6	6	5	6	12	4	6	2	2	3	4	7	3	2
1	7	8	6	6	13	4	7	2	2	3	4	7	3	3
1	8	9	7	6	14	5	7	2	3	3	4	7	4	4
1	9	9	8	6	15	5	7	2	3	3	4	7	5	5
1	11	12	11	6	17	6	8	2	3	3	4	7	7	7
1	14	14	13	8	22	8	10	3	4	4	5	8	8	8
1	16	17	15	8	24	9	11	3	4	4	5	8	10	10
1	18	19	21	8		11	16	3	5	7	7	9	13	12
1	20	21	23	8		12	17	3	7	7	8	9	14	14
1	22	23	25	10		13	20	3	7	9	8	9	15	15
1	24	25	28	14		14	22	4	7	9	9	10	17	17
1	29	30	32	14		17	24	4	8	9	10	10	21	21



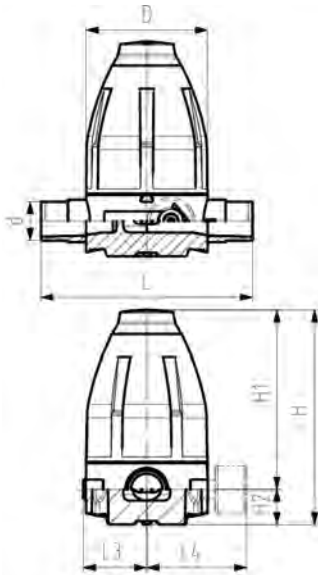
**Type 582 Pressure Reducing Valve PROGEF Standard PP Butt fusion spigots SDR11 metric Without manometer**

**Model:**

- Diaphragm PTFE/EPDM
- Integrated stainless steel mounting inserts
- 0.5-9.0 bar (7-130 psi)

0.3-3.0 bar (4-44 psi) on request

Manometer on request



d (mm)	DN (mm)	PN (bar)	O-rings EPDM Part No.	USD	weight (kg)	O-rings FKM Part No.	USD
25	20	10	<b>167 582 003</b>	<b>845.00</b>	1.250	<b>167 582 013</b>	<b>891.00</b>
20	15	10	<b>167 582 002</b>	<b>640.00</b>	0.560	<b>167 582 012</b>	<b>715.00</b>
32	25	10	<b>167 582 004</b>	<b>976.00</b>	1.250	<b>167 582 014</b>	<b>1,035.00</b>
40	32	10	<b>167 582 005</b>	<b>1,133.00</b>	3.450	<b>167 582 015</b>	<b>1,194.00</b>
50	40	10	<b>167 582 006</b>	<b>1,163.00</b>	3.460	<b>167 582 016</b>	<b>1,238.00</b>
63	50	10	<b>167 582 007</b>	<b>1,423.00</b>	3.520	<b>167 582 017</b>	<b>1,503.00</b>

d (mm)	D (mm)	H (mm)	H1 (mm)	H2 (mm)	H3 (mm)	L (mm)	L3 (mm)	M	closest inch (inch)
25	100	177	148	29	14	190	53	M6	¾
20	79	132	111	21	14	150	42	M6	½
32	100	177	148	29	14	190	53	M6	1
40	147	251	207	44	21	240	76	M8	1 ¼
50	147	251	207	44	21	240	76	M8	1 ½
63	147	251	207	44	21	260	76	M8	2



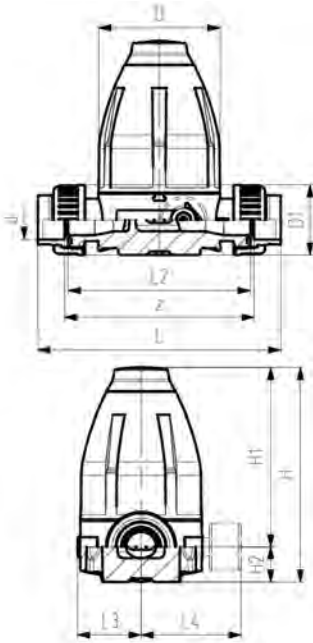
**Type 582 Pressure Reducing Valve PROGEF Standard PP Unions with fusion sockets metric Without manometer**

**Model:**

- Diaphragm PTFE/EPDM
- Integrated stainless steel mounting inserts
- 0.5-9.0 bar (7-130 psi)

0.3-3.0 bar (4-44 psi) on request

Manometer on request



d (mm)	DN (mm)	PN (bar)	O-rings EPDM Part No.	USD	weight (kg)	O-rings FKM Part No.	USD
20	15	10	<b>167 582 102</b>	<b>800.00</b>	0.600	<b>167 582 112</b>	<b>844.00</b>
25	20	10	<b>167 582 103</b>	<b>1,056.00</b>	1.300	<b>167 582 113</b>	<b>1,105.00</b>
32	25	10	<b>167 582 104</b>	<b>1,221.00</b>	1.320	<b>167 582 114</b>	<b>1,274.00</b>
40	32	10	<b>167 582 105</b>	<b>1,417.00</b>	3.530	<b>167 582 115</b>	<b>1,473.00</b>
50	40	10	<b>167 582 106</b>	<b>1,454.00</b>	3.650	<b>167 582 116</b>	<b>1,530.00</b>
63	50	10	<b>167 582 107</b>	<b>1,779.00</b>	3.800	<b>167 582 117</b>	<b>1,879.00</b>

d (mm)	D (mm)	D1 (mm)	H (mm)	H1 (mm)	H2 (mm)	H3 (mm)	L (mm)	L2 (mm)	L3 (mm)	M	z (mm)	closest inch (inch)
20	79	48	132	111	21	12	158	120	42	M6	126	½
25	100	58	177	148	29	14	192	150	53	M6	156	¾
32	100	65	177	148	29	14	196	150	53	M6	156	1
40	147	77	251	207	44	21	255	205	76	M8	211	1 ¼
50	147	84	251	207	44	21	261	205	76	M8	211	1 ½
63	147	111	251	207	44	21	269	205	76	M8	211	2



**Type 582 Pressure Reducing Valve PROGEF Standard PP Unions with butt fusion spigots SDR11 metric Without manometer**

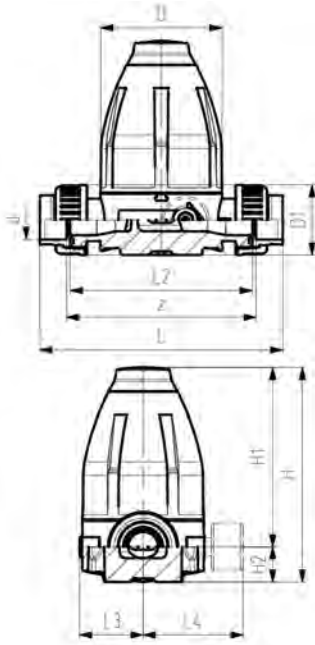


**Model:**

- Diaphragm PTFE/EPDM
- Integrated stainless steel mounting inserts
- 0.5-9.0 bar (7-130 psi)

0.3-3.0 bar (4-44 psi) on request

Manometer on request



d (mm)	DN (mm)	PN (bar)	O-rings EPDM Part No.	USD	weight (kg)	O-rings FKM Part No.	USD
20	15	10	<b>167 582 502</b>	<b>844.00</b>	0.640	<b>167 582 512</b>	<b>887.00</b>
25	20	10	<b>167 582 503</b>	<b>1,105.00</b>	1.350	<b>167 582 513</b>	<b>1,206.00</b>
32	25	10	<b>167 582 504</b>	<b>1,274.00</b>	1.370	<b>167 582 514</b>	<b>1,390.00</b>
40	32	10	<b>167 582 505</b>	<b>1,473.00</b>	3.660	<b>167 582 515</b>	<b>1,610.00</b>
50	40	10	<b>167 582 506</b>	<b>1,530.00</b>	3.710	<b>167 582 516</b>	<b>1,672.00</b>
63	50	10	<b>167 582 507</b>	<b>1,879.00</b>	3.860	<b>167 582 517</b>	<b>2,066.00</b>

d (mm)	D (mm)	D1 (mm)	H (mm)	H1 (mm)	H2 (mm)	H3 (mm)	L (mm)	L2 (mm)	L3 (mm)	M	z (mm)	closest inch (inch)
20	79	48	132	111	21	12	158	120	42	M6	126	½
25	100	58	177	148	29	14	192	150	53	M6	156	¾
32	100	65	177	148	29	14	196	150	53	M6	156	1
40	147	77	251	207	44	21	255	205	76	M8	211	1 ¼
50	147	84	251	207	44	21	261	205	76	M8	211	1 ½
63	147	111	251	207	44	21	269	205	76	M8	211	2

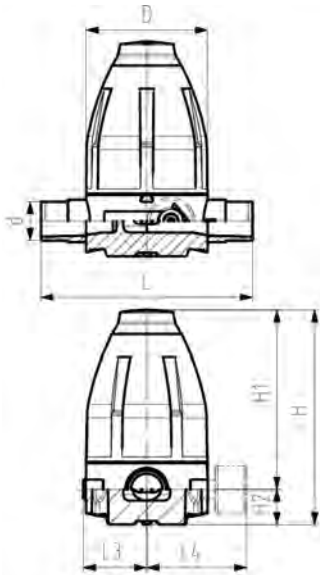


**Type 586 Pressure Retaining Valve PROGEF Standard PP Butt fusion spigots SDR11 metric Without manometer**

**Model:**

- Diaphragm PTFE/EPDM
- Integrated stainless steel mounting inserts
- 0.5-9.0 bar (7-130 psi)

0.3-3.0 bar (4-44 psi) on request  
 Manometer on request



d (mm)	DN (mm)	PN (bar)	O-rings EPDM Part No.	USD	weight (kg)	O-rings FKM Part No.	USD
20	15	10	<b>167 586 002</b>	<b>492.00</b>	0.550	<b>167 586 012</b>	<b>537.00</b>
25	20	10	<b>167 586 003</b>	<b>549.00</b>	1.260	<b>167 586 013</b>	<b>603.00</b>
32	25	10	<b>167 586 004</b>	<b>627.00</b>	1.260	<b>167 586 014</b>	<b>686.00</b>
40	32	10	<b>167 586 005</b>	<b>689.00</b>	3.460	<b>167 586 015</b>	<b>773.00</b>
50	40	10	<b>167 586 006</b>	<b>755.00</b>	3.470	<b>167 586 016</b>	<b>822.00</b>
63	50	10	<b>167 586 007</b>	<b>963.00</b>	3.540	<b>167 586 017</b>	<b>1,034.00</b>

d (mm)	D (mm)	H (mm)	H1 (mm)	H2 (mm)	H3 (mm)	L (mm)	L3 (mm)	M	closest inch (inch)
20	79	132	111	21	14	150	42	M6	½
25	100	177	148	29	14	190	53	M6	¾
32	100	177	148	29	14	190	53	M6	1
40	147	251	207	44	21	240	76	M8	1 ¼
50	147	251	207	44	21	240	76	M8	1 ½
63	147	251	207	44	21	260	76	M8	2



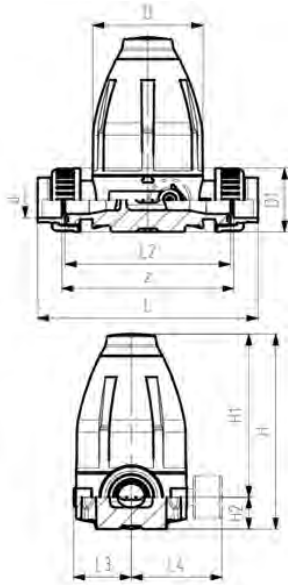
**Type 586 Pressure Retaining Valve PROGEF Standard PP Union with fusion sockets metric Without manometer**

**Model:**

- Diaphragm PTFE/EPDM
- Integrated stainless steel mounting inserts
- 0.5-9.0 bar (7-130 psi)

0.3-3.0 bar (4-44 psi) on request

Manometer on request



d (mm)	DN (mm)	PN (bar)	O-rings EPDM Part No.	USD	weight (kg)	O-rings FKM Part No.	USD
20	15	10	<b>167 586 102</b>	<b>579.00</b>	0.590	<b>167 586 112</b>	<b>626.00</b>
25	20	10	<b>167 586 103</b>	<b>668.00</b>	1.310	<b>167 586 113</b>	<b>721.00</b>
32	25	10	<b>167 586 104</b>	<b>783.00</b>	1.330	<b>167 586 114</b>	<b>844.00</b>
40	32	10	<b>167 586 105</b>	<b>861.00</b>	3.610	<b>167 586 115</b>	<b>925.00</b>
50	40	10	<b>167 586 106</b>	<b>944.00</b>	3.660	<b>167 586 116</b>	<b>1,010.00</b>
63	50	10	<b>167 586 107</b>	<b>1,203.00</b>	3.810	<b>167 586 117</b>	<b>1,274.00</b>

d (mm)	D (mm)	D1 (mm)	H (mm)	H1 (mm)	H2 (mm)	H3 (mm)	L (mm)	L2 (mm)	L3 (mm)	M	z (mm)	closest inch (inch)
20	79	48	132	111	21	12	158	120	42	M6	126	½
25	100	58	177	148	29	14	192	150	53	M6	156	¾
32	100	65	177	148	29	14	196	150	53	M6	156	1
40	147	77	251	207	44	21	255	205	76	M8	211	1 ¼
50	147	84	251	207	44	21	261	205	76	M8	211	1 ½
63	147	111	251	207	44	21	269	205	76	M8	211	2

**Type 586 Pressure Retaining Valve PROGEF Standard PP Union with butt fusion spigots SDR11 metric Without manometer**

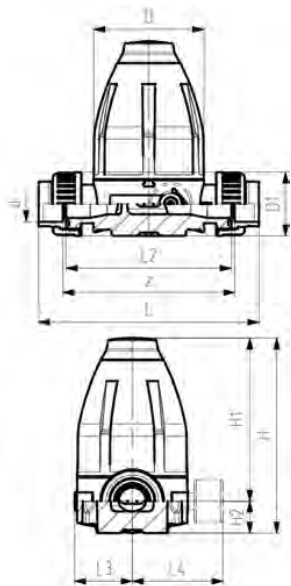


**Model:**

- Diaphragm PTFE/EPDM
- Integrated stainless steel mounting inserts
- 0.5-9.0 bar (7-130 psi)

0.3-3.0 bar (4-44 psi) on request

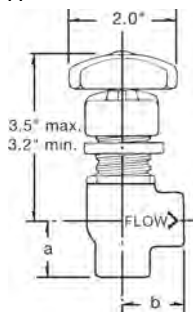
Manometer on request



d (mm)	DN (mm)	PN (bar)	O-rings EPDM Part No.	USD	weight (kg)	O-rings FKM Part No.	USD
20	15	10	<b>167 586 502</b>	<b>638.00</b>	0.630	<b>167 586 512</b>	<b>684.00</b>
25	20	10	<b>167 586 503</b>	<b>735.00</b>	1.350	<b>167 586 513</b>	<b>789.00</b>
32	25	10	<b>167 586 504</b>	<b>861.00</b>	1.370	<b>167 586 514</b>	<b>921.00</b>
40	32	10	<b>167 586 505</b>	<b>948.00</b>	3.650	<b>167 586 515</b>	<b>1,011.00</b>
50	40	10	<b>167 586 506</b>	<b>1,037.00</b>	3.700	<b>167 586 516</b>	<b>1,104.00</b>
63	50	10	<b>167 586 507</b>	<b>1,323.00</b>	3.850	<b>167 586 517</b>	<b>1,394.00</b>

d (mm)	D (mm)	D1 (mm)	H (mm)	H1 (mm)	H2 (mm)	H3 (mm)	L (mm)	L2 (mm)	L3 (mm)	M	z (mm)	closest inch (inch)
20	79	48	132	111	21	12	228	120	42	M6	126	½
25	100	58	177	148	29	14	264	150	53	M6	156	¾
32	100	65	177	148	29	14	270	150	53	M6	156	1
40	147	77	251	207	44	21	331	205	76	M8	211	1 ¼
50	147	84	251	207	44	21	337	205	76	M8	211	1 ½
63	147	111	251	207	44	21	343	205	76	M8	211	2

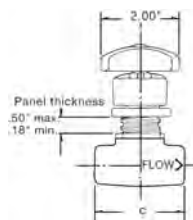
A



**Type 522 Angle Body Needle Valve, PROGEF Standard**

Size (inch)	Part No.	USD	a (mm)	b (mm)
½	<b>157 522 581</b>	<b>122.00</b>	28	31

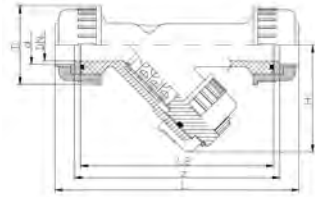
A



**Type 522 Globe Body Needle Valve, PROGEF Standard**

Size (inch)	Part No.	USD	weight (lb)	c (mm)
½	<b>157 522 556</b>	<b>122.00</b>	0.276	65

B



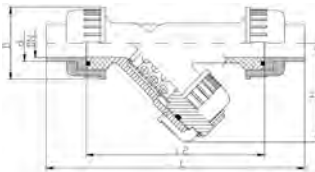
**Line Strainer Type 305 PROGEF Standard  
Socket fusion**

**Model:**

- Material: PP-H
- Protects valves, pumps, etc. from becoming damaged
- Easy dismantling to clean or replace the screen
- Screen perforation 0.5 mm
- For easy installation and removal
- Overall length according to EN 558

d (mm)	EPDM Part No.	USD	FKM Part No.	USD	D (mm)	H (mm)	L (mm)	L2 (mm)	z (mm)	closest inch (inch)
20	* 167 305 000	208.00	* 167 305 049	239.00	52	75	168	130	140	½
25	* 167 305 050	227.00	* 167 305 099	249.00	62	80	192	150	160	¾
32	* 167 305 100	247.00	* 167 305 149	303.00	68	90	206	160	170	1
40	* 167 305 150	300.00	* 167 305 199	342.00	85	110	230	180	190	1 ¼
50	* 167 305 200	375.00	* 167 305 249	447.00	85	125	256	200	210	1 ½
63	* 167 305 250	509.00	* 167 305 299	574.00	102	150	294	230	240	2

B



**Line Strainer Type 305 PROGEF Standard  
IR Plus fusion**

**Model:**

- Material: PP-H
- Protects valves, pumps, etc. from becoming damaged
- Easy dismantling to clean or replace the screen
- Screen perforation 0.5 mm
- For easy installation and removal
- Overall length according to EN 558

d (mm)	EPDM Part No.	USD	FKM Part No.	USD	D (mm)	H (mm)	L (mm)	L2 (mm)	e (mm)	closest inch (inch)
20	* 167 305 300	208.00	* 167 305 349	219.00	52	75	238	130	1.9	½
25	* 167 305 350	210.00	* 167 305 399	249.00	62	80	264	150	2.3	¾
32	* 167 305 400	247.00	* 167 305 449	303.00	68	90	280	160	3.0	1
40	* 167 305 450	275.00	* 167 305 499	342.00	85	110	306	180	3.7	1 ¼
50	* 167 305 500	357.00	* 167 305 549	447.00	85	125	332	200	4.6	1 ½
63	* 167 305 550	509.00	* 167 305 599	627.00	102	150	368	230	5.8	2

A



**Stainless Steel Screen for Type 306  
30 mesh, 1/64" hole**

**Model:**

- Stainless Steel A4 Quality (AISI 316)
- For line strainers Type 306

d (mm)	Part No.	USD	D (mm)	L (mm)	closest inch (inch)
20	^ 161 486 100	11.00	14	39	½
25	^ 161 486 101	17.00	18	48	¾
32	^ 161 486 102	17.00	24	60	1
40	^ 161 486 103	20.00	30	71	1 ¼
50	^ 161 486 104	23.00	38	87	1 ½
63	^ 161 486 105	26.00	48	106	2
75	161 486 106	32.02	61	100	2 ½
90	^ 161 486 107	49.00	73	118	3