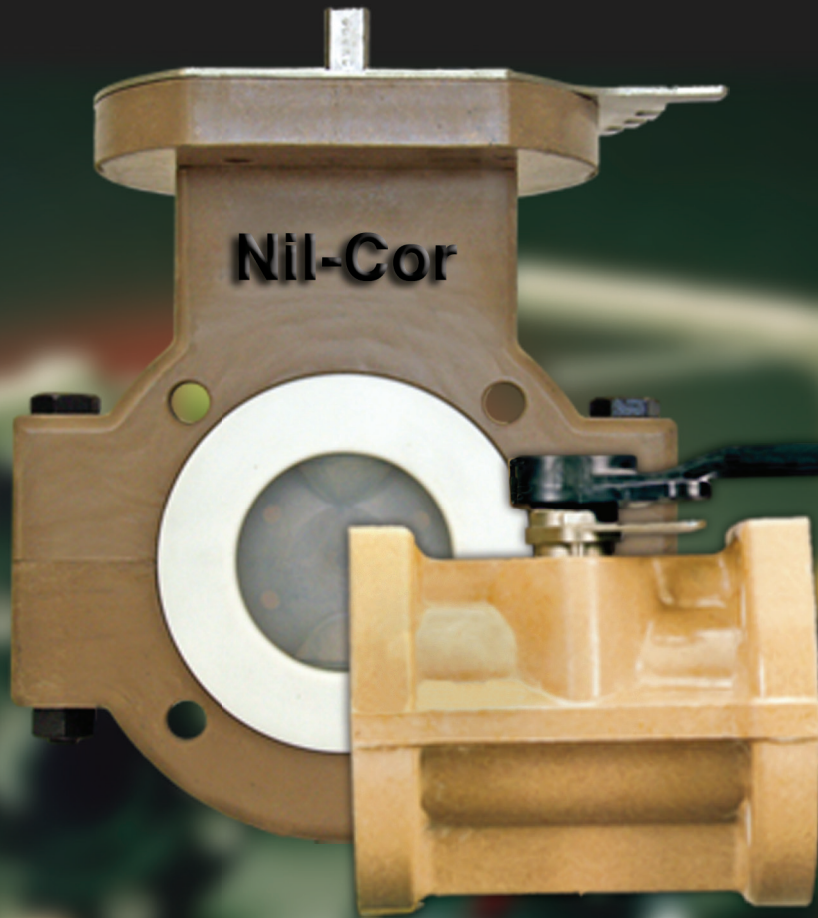


Nil-Cor[®]

The Leader in Advanced Composite Valves

Product Overview



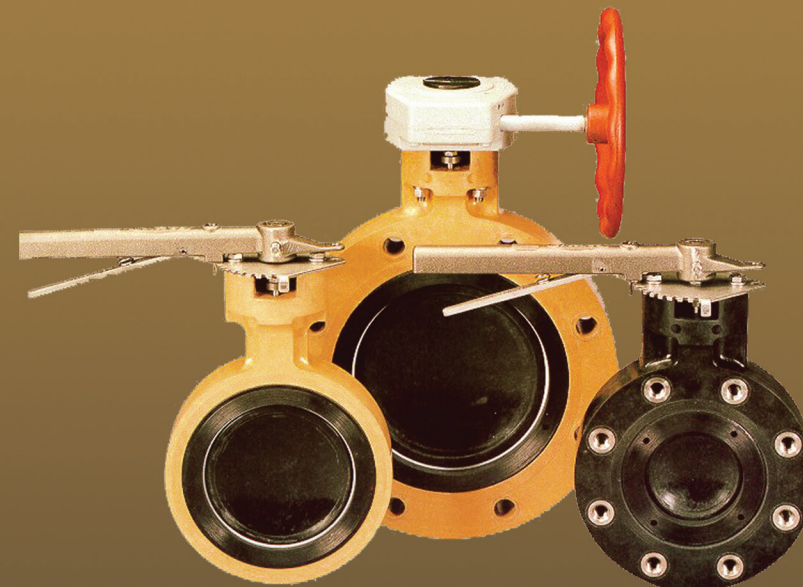
Nil-Cor®

Strong, Lightweight, Chemical Resistant

Nil-Cor is the pioneer and world leader in design, production and application of advanced composite valves manufactured from fiberglass and graphite reinforced resins. First introduced in 1977, Nil-Cor advanced composite valves have consistently proven their value in tough, highly corrosive fluids and environments. Nil-Cor graphite and fiberglass reinforced thermoset and thermoplastic resins provide outstanding resistance to acids, caustics, bleaches, solvents and over 1,000 other corrosive chemicals.

Ball Valves

- Choice of (5) Resin Systems
- Fiberglass or Graphite Reinforcements
- Size Range 1" - 10"
- Service Temperature (-)50°F to 275°F
- ANSI B16.10
- ANSI CL 150
- Exceeds Class VI Shut-Off
- DIN, JIS & BS Flg. Drilling Option

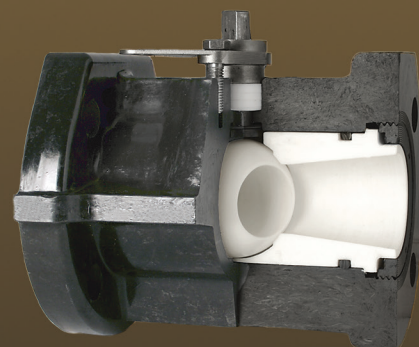


High Performance Double-Offset Butterfly Valves

- 300, 310, 500 XP or 610XP Resin System
 - Viton® or PTFE Seat
 - Composite Disc
 - Size Range 3" - 42"
 - Service Temperature (-)50°F to 250°F
 - ANSI CL 150
 - DIN, JIS & BS Flg. Drilling Option
- Note: Not all resin systems available with all sizes

Slurry Ball Valves

- Zirconia Ceramic Ball
- Zirconia or UHMWPE Liners
- Size Range 1" - 10"
- Service Temperature (-)50°F to 275°F
- ANSI B16.10,
- ANSI CL 150 Drilling
- Class IV Shut-Off
- DIN, JIS & BS Flg. Drilling Option



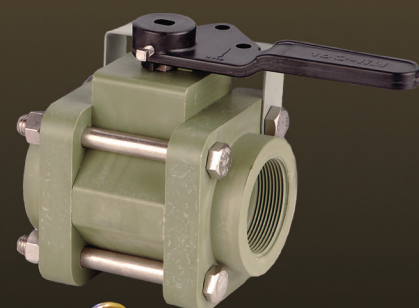
PTFE / PFA Lined Butterfly Valves

- Structural Composite
- PTFE Seat / PFA Encapsulated Disc
- Size Range 2" - 12"
- Service Temperature (-)50°F to 275°F
- ANSI CL 150 Drilling
- DIN, JIS & BS Flg. Drilling Option



Threaded Ball Valves

- 410 Polysulfone Resin System
- 3-Piece Design
- Size Range 1/2" - 2"
- Service Temperature (-)50°F to 275°F
- Threaded End Connections
- MSS SP-84
- Exceeds Class IV Shut-Off



Elastomer Lined Butterfly Valves

- Structural Composite
- EPDM or Hypalon® Seat
- EPDM or Hypalon® Encapsulated Disc
- Size Range 2" - 12"
- Service Temperature (-)50°F to 250°F
- ANSI CL 150
- DIN, JIS & BS Flg. Drilling Option



Ball & Swing Check Valves

- 300, 310, 500XP or 610XP Resin System
- Fiberglass or Graphite Reinforcements
- Size Range 1" - 10" Ball Checks
- Size Range 2" - 16" Swing Checks
- Service Temperature (-)50°F to 275°F
- ANSI CL 150 Drilling
- DIN, JIS & BS Flg. Drilling Option



Resin System Choices

- 300 : Vinyl Ester with Graphite Fiber
- 310 : Vinyl Ester with Glass Fiber
- 410 : Polysulfone with Glass Fiber
- 500XP : Novolac Epoxy with Graphite Fiber
- 610XP : Novolac Epoxy with Glass Fiber

For Selection Guidelines & Chemical Resistance
See Catalog 1000

3-Way Ball Valve

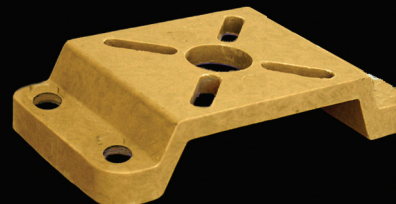
- 300 or 310 Resin System
- Fiberglass or Graphite Reinforcements
- Size Range 1 1/2"
- Service Temperature (-)50°F to 250°F
- ANSI CL 150
- DIN, JIS & BS Flg. Drilling Option



Control Valves



Composite Mounting Bracket



Characterized Trim



- Linear
- Equal Percentage
- Custom



Certified to ISO 9001



TSSA Certified



Type Approved Certified



PED Directive Certified



Nil-Cor[®] LLC
an ANDRONACO INDUSTRIES company

4855 Broadmoor Ave., Kentwood, MI. 49512
Ph. 616-554-3100 Fax 616-554-5623
www.nilcor.com

Catalog M-100 10090813-01