

Section 7

Accessories





Flange Rings

278



Gaskets

282



Pipe and Valve Support

283

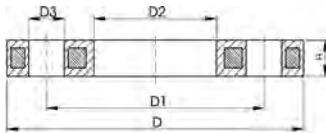
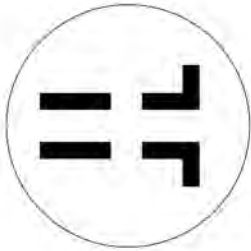


Clamps

289

Flange Rings

B



Backing flange PP-Steel For butt fusion systems Inch/ANSI

Model:

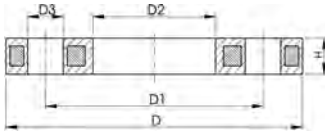
- UV-resistant.
- **Bolt circle class 150**

AL: number of holes

d (inch)	d (mm)	DN (mm)	PN (bar)	Part No.	USD	weight (kg)
1/2	20	15	16	727 701 206	22.80	0.213
3/4	25	20	16	727 701 207	24.87	0.260
1	32	25	16	727 701 208	32.12	0.416
1 1/4	40	32	16	727 701 209	38.34	0.730
1 1/2	50	40	16	727 701 210	45.60	0.809
2	63	50	16	727 701 211	58.03	0.866
2 1/2	75	65	16	727 701 212	63.21	1.117
3	90	80	16	727 701 213	75.65	1.492
4	110	100	16	727 701 214	93.26	1.695
*	6	160	150	727 700 717	110.88	3.491
*	8	200	200	727 700 719	233.16	5.600
*	8	225	200	727 700 720	233.16	5.533
10	²⁵⁰ / ₂₈₀	250	10	* 727 701 321	446.63	6.000
12	315	300	10	727 701 322	661.14	11.800
14	355	350	10	* 727 701 323	1,251.81	17.900
16	400	400	10	* 727 701 324	1,424.87	24.500
20	⁴⁵⁰ / ₅₀₀	500	10	* 727 701 325	1,883.94	33.600

D (mm)	D1 (mm)	D2 (mm)	D3 (mm)	H (mm)	AL	SC
95	60	28	16	12	4	M12
105	70	34	16	12	4	M12
115	79	42	16	16	4	M12
140	89	51	16	16	4	M16
150	98	62	16	18	4	M16
165	121	78	19	18	4	M16
185	140	92	19	18	4	M16
200	152	110	19	20	4	M16
229	190	133	19	20	8	M16
*	285	241	178	22	8	M20
*	340	297	235	22	8	M20
*	340	297	238	22	8	M20
406	362	293	25	30	12	M24
483	432	338	25	34	12	M24
540	476	376	29	42	12	M27
597	539	429	29	44	16	M27
712	635	540	32	53	20	M30

B



Backing flange PP-Steel
For socket fusion systems Inch/ANSI

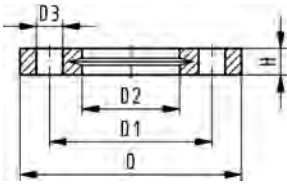
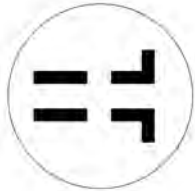
AL: number of holes

Model:

- Bolt circle class 150
- UV-resistant.

d (inch)	d (mm)	DN (mm)	PN (bar)	Part No.	USD	weight (kg)	D (mm)	D1 (mm)	D2 (mm)	D3 (mm)	H (mm)	AL	SC
½	20	15	16	727 701 206	22.80	0.213	95	60	28	16	12	4	M12
¾	25	20	16	727 701 207	24.87	0.260	105	70	34	16	12	4	M12
1	32	25	16	727 701 208	32.12	0.416	115	79	42	16	16	4	M12
1 ¼	40	32	16	727 701 209	38.34	0.730	140	89	51	16	16	4	M16
1 ½	50	40	16	727 701 210	45.60	0.809	150	98	62	16	18	4	M16
2	63	50	16	727 701 211	58.03	0.866	165	121	78	19	18	4	M16
2 ½	75	65	16	727 701 212	63.21	1.117	185	140	92	19	18	4	M16
3	90	80	16	727 701 213	75.65	1.492	200	152	110	19	20	4	M16
4	110	100	16	727 701 214	93.26	1.695	229	190	133	19	20	8	M16
6	160	150	16	727 700 817	110.88	3.167	285	241	190	22	26	8	M20
8	200	200	16	727 700 819	233.16	6.143	340	297	226	22	29	8	M20
8	225	200	16	727 700 820	233.16	4.448	340	297	250	22	29	8	M20

B



V-Flange Ring For Butt Fusion Systems

Model:

- Full-plastic flange PP-GF (30% glass-fiber reinforced), with V-groove which applies force evenly on collar
- Connecting dimension: ANSI/ASME B 16.5 class 150, ASTM D 4024, BS 1560, BS EN 1759
- **Bolt circle class 150**
- UV-resistant

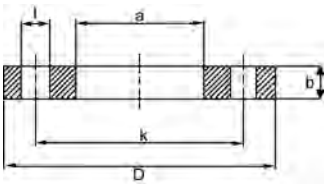
AL: number of holes

All sizes suitable for butt fusion. Sizes 20-75mm also for socket fusion.

Combined version, metric-ANSI

Size (inch)	d (mm)	Part No.	USD	D (mm)	D1 (mm)	D2 (mm)	D3 (mm)	H (mm)	AL	SC
½	20	727 701 406	16.79	95	60	28	16	16	4	M12
¾	25	727 701 407	18.03	105	70	34	16	17	4	M12
1	32	727 701 408	22.80	115	79	42	16	18	4	M12
1 ¼	40	727 701 409	26.42	140	89	51	16	20	4	M16
1 ½	50	727 701 410	27.56	150	98	62	16	22	4	M16
2	63	727 701 411	33.58	165	121	78	19	24	4	M16
2 ½	75	727 701 412	36.58	185	140	92	19	26	4	M16
3	90	727 701 513	40.41	200	152	108	19	27	4	M16
4	110	727 701 514	50.78	229	190	128	19	28	8	M16
6	160	727 700 517	69.64	285	240	178	22	32	8	M20
8	200	727 700 519	132.64	340	295	235	22	34	8	M20
8	225	727 700 520	151.30	340	295	238	22	34	8	M20
10	250	* 727 701 521	Call	406	362	288	26	38	12	M20
12	315	727 701 523	241.45	483	432	338	26	42	12	M20

B



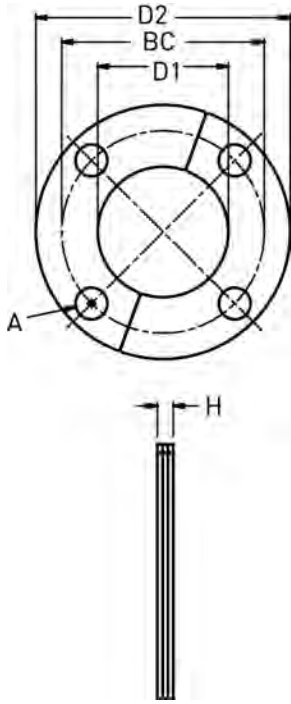
PVDF Coated Steel for Butt Fusion Systems Inch/ANSI

Material: PVDF blue coated steel

Bolt holes drilled in accordance with ANSI B16.5, Class 150 pattern

d (mm)	Size (inch)	Part No.	USD	D (inch)	a (inch)	k (inch)	b (inch)	l (inch)	Bolt Holes
20	½	* 155 701 806	29.43	3.50	1.10	2.36	0.28	0.63	4
25	¾	* 155 701 807	32.95	3.86	1.34	2.76	0.28	0.63	4
32	1	* 155 701 808	43.52	4.25	1.65	3.11	0.28	0.63	4
40	1 ¼	* 155 701 809	51.81	4.61	2.01	3.50	0.32	0.63	4
50	1 ½	* 155 701 810	52.95	5.00	2.44	3.86	0.32	0.63	4
63	2	* 155 701 811	64.66	5.98	3.07	4.76	0.39	0.75	4
75	2 ½	* 155 701 812	78.86	7.01	3.62	5.51	0.39	0.75	4
90	3	* 155 701 813	85.91	7.48	4.33	5.98	0.39	0.75	4
110	4	* 155 703 814	106.74	9.02	5.24	7.48	0.39	0.75	8
160	6	* 155 701 917	146.11	10.98	7.05	9.48	0.50	0.88	8
200	8	* 155 701 919	265.28	13.50	9.30	11.73	0.63	0.88	8
225	9	* 155 701 920	303.63	13.50	9.42	11.73	0.63	0.88	8
250	10	* 155 701 921	419.69	16.00	11.35	14.25	0.88	0.88	12
315	12	* 155 701 923	505.70	19.00	13.31	17.00	1.00	1.00	12
355	14	* 155 701 924	622.80	21.00	14.80	18.75	1.00	1.00	12
400	16	* 155 701 925	1,281.87	23.50	16.93	21.25	1.13	1.13	16

B



Flange Backing Ring, Two-Piece Corrosion Resistant 316 SS

The split ring design allows a flange ring to be added after a flange adapter has been joined to the pipe for retrofit purposes. Ring is made from high grade 316 SS, with excellent corrosion resistance properties.

d (mm)	Size (inch)	Part No.	USD	weight (lb)	D1 (mm)	D2 (mm)	H (mm)	B.C (mm)	A (mm)	Bolt Holes
20	¾	* 150 701 806	100.52	0.860	28	89	10	60	16	4
25	¾	* 150 701 807	101.55	1.301	34	98	10	70	16	4
32	1	* 150 701 808	108.81	0.002	42	108	10	79	16	4
40	1 ¼	* 150 701 809	111.92	0.002	51	117	10	89	16	4
50	1 ½	* 150 701 810	125.39	1.598	62	127	10	98	16	4
63	2	* 150 701 811	153.37	0.002	78	152	10	121	19	4
75	2 ½	* 150 701 812	194.82	3.031	92	178	10	140	19	4
90	3	* 150 701 813	212.44	0.002	110	190	10	152	19	4
110	4	* 150 701 814	294.30	0.002	133	229	10	190	19	8
160	6	* 150 701 817	687.05	0.002	179	279	19	241	22	8
200	8	* 150 701 819	872.54	17.600	236	343	19	298	22	8
225	9	* 150 701 820	880.83	17.200	239	343	19	298	22	8
250	10	* 150 701 821	1,663.21	35.300	288	406	29	362	22	12
315	12	* 150 701 823	2,211.40	51.000	338	483	29	432	25	12

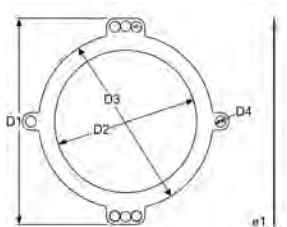
Gaskets

B

SYGEF Plus 355-450 ePTFE Gasket ANSI



d	Pipe Size	Part No.	USD	weight	D1	D2	D3	D4	e1
(mm)	(inch)			(lb)	(mm)	(mm)	(mm)	(mm)	(mm)
355	14	* 155 400 674	1,736.79	0.661	524	329	430	48	3.2
400	16	* 155 400 675	2,176.17	0.882	587	396	482	51	3.2
450	18	* 155 400 676	Call	1.102	625	432	530	51	3.2



B

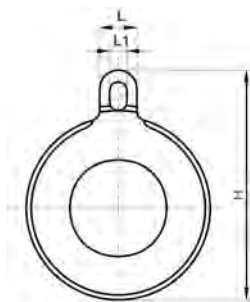
SYGEF HP Gasket

Model:

- For Use with Steel Flange Rings
- * Non-Returnable/Non-Cancelable



d	Pipe Size	Part No.	USD	weight	H	L	L1
(mm)	(inch)			(lb)	(inch)	(inch)	(inch)
25	3/4	* 731 400 753	84.97	0.044	2.99	0.79	0.51
32	1	* 731 400 755	86.01	0.053	3.58	0.98	0.63
40	1 1/4	* 731 400 757	87.05	0.079	3.98	0.98	0.63
50	1 1/2	* 731 400 759	90.16	0.084	4.33	0.98	0.63
63	2	* 731 400 760	93.26	0.132	5.04	0.98	0.63
75	2 1/2	* 731 400 761	102.59	0.179	5.83	0.98	0.63
90	3	* 731 400 763	118.13	0.132	6.34	0.98	0.63
110	4	* 731 400 764	176.17	0.220	7.44	0.98	0.63
160	6	* 731 400 667	234.20	0.309	9.61	1.18	0.79
200/225	8/9	* 731 400 670	316.06	0.441	11.81	1.18	0.79
250	10	* 731 400 671	384.46	0.683	14.17	1.38	0.87
315	12	* 731 400 672	434.20	0.650	16.50	1.38	0.87



A

Sanitary Gasket

- Silicone material
- Gaskets are high purity cleaned and double bagged. Suitable for SYGEF PVDF and PROGEF PP high purity and standard sanitary connections.



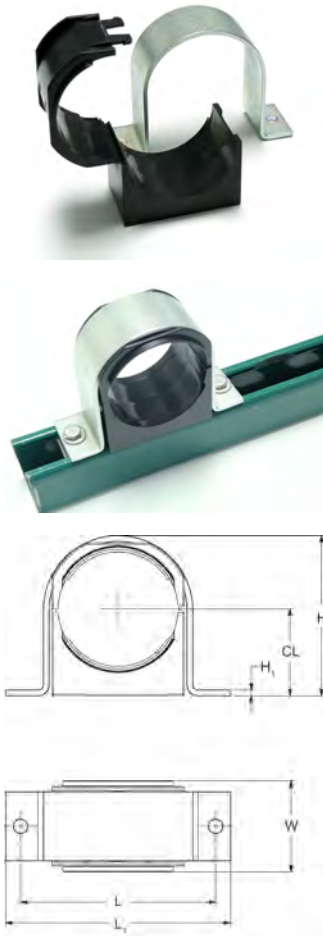
Size	Tube (3A)	Part No.	USD
(mm)	(inch)		
20	3/4	* 747 460 005	45.60
25	1	* 155 223 768	45.60
32/40	1 1/2	* 747 460 008	45.60
50	2	* 155 223 771	45.60
63	2 1/2	* 155 223 772	45.60

Pipe and Valve Support

Stress Less Pipe Guide - Metric

First pipe support system especially designed to eliminate stress transfer to pipe due to thermal expansion or seismic events. Has engineered, designed gap of 3mm between support insert and pipe OD. Excessive force can never be exerted on the pipe regardless of tightening of bolts.

- For metric size pipe 20mm – 225mm
- Includes steel hoop and plastic guide insert
- Guide insert is HDPE, black, UV resistant
- Hoop is trivalent gold chromium-coated galvanized steel, compliant with ASTM B633 Type VI
- Mounts to any flat surface or standard strut support
- Mounting holes in bracket for bolts size "SC" (not included)
- Sold in pack quantities SP

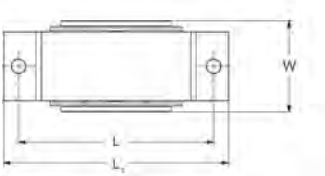
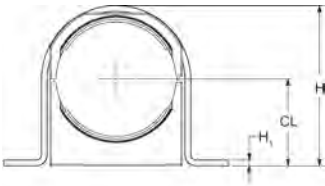


Part No.	USD	SP	Size (mm)	CL (mm)	t (mm)	H (mm)	L (mm)	L1 (mm)	w (mm)	SC
155 484 500	Call	10	20	16	3	41	66	83	50	1/4"
155 484 501	Call	10	25	19	3	47	71	88	50	1/4"
155 484 502	Call	10	32	22	3	56	78	91	50	1/4"
155 484 503	Call	10	40	26	3	58	86	102	50	1/4"
155 484 504	Call	10	50	30	3	69	94	111	50	1/4"
155 484 505	Call	10	63	37	3	89	107	124	50	1/4"
155 484 506	Call	10	75	60	3	108	119	135	50	1/4"
155 484 507	Call	10	90	60	3	113	134	151	50	1/4"
155 484 508	Call	5	110	70	3	136	159	175	50	3/8"
155 484 509	Call	5	160	100	5	193	213	229	50	3/8"
155 484 510	Call	5	225	140	5	262	272	288	50	3/8"

Stress Less Pipe Guide - IPS

First pipe support system especially designed to eliminate stress transfer to pipe due to thermal expansion or seismic events. Has engineered, designed gap of 3mm between support insert and pipe OD. Excessive force can never be exerted on the pipe regardless of tightening of bolts.

- For IPS size pipe 1/2" - 8"
- Includes steel hoop and plastic guide insert
- Guide insert is HDPE, gray, UV resistant
- Hoop is trivalent gold chromium-coated galvanized steel, compliant with ASTM B633 Type VI
- Mounts to any flat surface or standard strut support
- Mounting holes in bracket for bolts size "SC" (not included)
- Sold in pack quantities SP



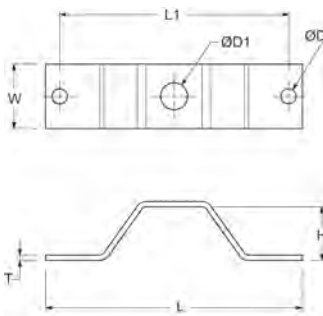
Part No.	USD	SP	Size (inch)	CL (inch)	t (inch)	H (inch)	L (inch)	L1 (inch)	W (inch)	SC
155 484 520	Call	10	½	0.63	0.12	1.61	2.60	3.27	1.97	1/4"
155 484 521	Call	10	¾	0.75	0.12	1.85	2.80	3.46	1.97	1/4"
155 484 522	Call	10	1	0.87	0.12	2.20	3.07	3.58	1.97	1/4"
155 484 523	Call	10	1 ¼	1.02	0.12	2.28	3.39	4.02	1.97	1/4"
155 484 524	Call	10	1 ½	1.18	0.12	2.72	3.70	4.37	1.97	1/4"
155 484 525	Call	10	2	1.46	0.12	3.50	4.21	4.88	1.97	1/4"
155 484 526	Call	10	2 ½	2.36	0.12	4.25	4.69	5.31	1.97	1/4"
155 484 527	Call	10	3	2.36	0.12	4.45	5.28	5.94	1.97	1/4"
155 484 528	Call	5	4	2.76	0.12	5.35	6.26	6.89	1.97	3/8"
155 484 529	Call	5	6	3.94	0.19	7.60	8.39	9.02	1.97	3/8"
155 484 530	Call	5	8	5.51	0.19	10.31	10.71	11.34	1.97	3/8"



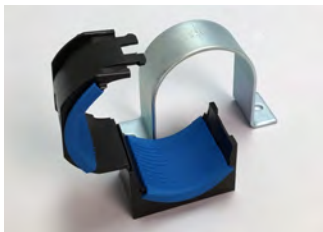
Stress Less Pipe Guide - Clevis Hanger Kit

First pipe support system especially designed to eliminate stress transfer to pipe due to thermal expansion or seismic events. Has engineered, designed gap of 3mm between support insert and pipe OD. Excessive force can never be exerted on the pipe regardless of tightening of bolts.

- Clevis Hanger Kit includes 1 hanging bracket, 2 socket cap screws, 4 washers, 2 hex nuts
- For use with metric or IPS Stress Less Pipe Guides
- Does not include pipe support insert or bracket
- Bracket is trivalent gold chromium-coated galvanized steel, compliant with ASTM B633 Type VI
- Hardware is stainless steel
- SC = bolt size
- Top hole D1 (see sketch) is not tapped
- Sold in pack quantities SP

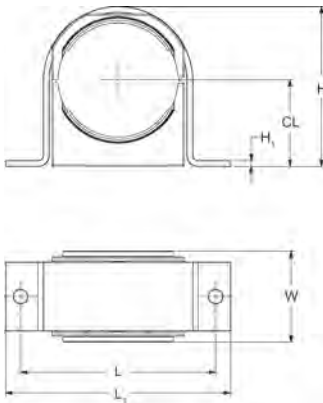


Part No.	USD	SP	Size	L		H	T	w	D1	D	SC
				(mm)	(mm)						
155 484 540	Call	5	20mm (1/2")	83	66	32	3	38	12.7	8	1/4"
155 484 541	Call	5	25mm (3/4")	88	71	32	3	38	12.7	8	1/4"
155 484 542	Call	5	32mm (1")	95	78	32	3	38	12.7	8	1/4"
155 484 543	Call	5	40mm (1-1/4")	103	86	32	3	38	12.7	8	1/4"
155 484 544	Call	5	50mm (1-1/2")	111	94	32	3	38	12.7	8	1/4"
155 484 545	Call	5	63mm (2")	124	107	32	3	38	12.7	8	1/4"
155 484 546	Call	5	75mm (2-1/2")	136	119	32	3	38	12.7	8	1/4"
155 484 547	Call	5	90mm (3")	151	134	32	3	38	12.7	8	1/4"
155 484 548	Call	5	110mm (4")	176	159	32	3	38	12.7	10	3/8"
155 484 549	Call	5	160mm (6")	230	213	32	5	38	12.7	10	3/8"
155 484 550	Call	5	225mm (8")	288	272	32	5	38	12.7	10	3/8"

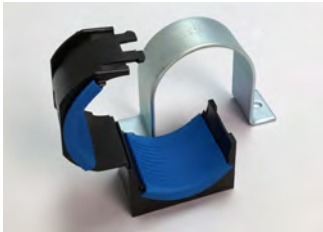


Stress Less Pipe Clamp - Vertical Metric

- For use as a vertical pipe support. Includes elastomeric insert strips in clamp to provide friction with snug fit against pipe.
- Bracket provides strength for support during seismic or excessive loading events.
- For metric size pipe 20mm – 225mm
- Includes steel hoop and plastic guide insert
- Guide insert is HDPE, black, UV resistant
- Hoop is trivalent gold chromium-coated galvanized steel, compliant with ASTM B633 Type VI
- Mounts to any flat surface or standard strut support
- Mounting holes in bracket for bolts size "SC" (not included)
- Sold in pack quantities SP

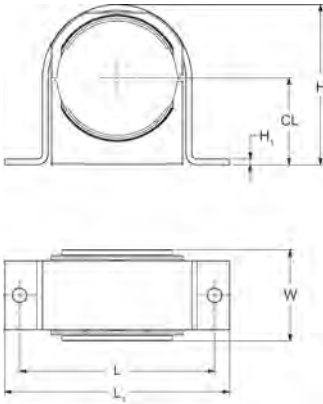


Part No.	USD	SP	Size	CL	t	H	L	L1	w	SC
155 484 560	Call	10	20	16	3	41	66	83	50	1/4"
155 484 561	Call	10	25	19	3	47	71	88	50	1/4"
155 484 562	Call	10	32	22	3	56	78	91	50	1/4"
155 484 563	Call	10	40	26	3	58	86	102	50	1/4"
155 484 564	Call	10	50	30	3	69	94	111	50	1/4"
155 484 565	Call	10	63	37	3	89	107	124	50	1/4"



Stress Less Pipe Clamp - Vertical IPS

- For use as a vertical pipe support. Includes elastomeric insert strips in clamp to provide friction with snug fit against pipe.
- Bracket provides strength for support during seismic or excessive loading events.
- For IPS size pipe 1/2" - 8"
- Includes steel hoop and plastic guide insert
- Guide insert is HDPE, gray, UV resistant
- Hoop is trivalent gold chromium-coated galvanized steel, compliant with ASTM B633 Type VI
- Mounts to any flat surface or standard strut support
- Mounting holes in bracket for bolts size "SC" (not included)
- Sold in pack quantities SP

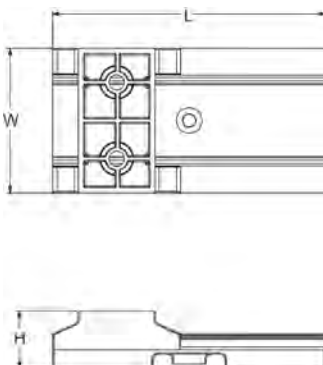


Part No.	USD	SP	Size	CL	t	H	L	L1	W	SC
			(inch)	(inch)	(inch)	(inch)	(inch)	(inch)	(inch)	
155 484 580	Call	10	1/2	0.63	0.12	1.61	2.60	3.27	1.97	1/4"
155 484 581	Call	10	3/4	0.75	0.12	1.85	2.80	3.46	1.97	1/4"
155 484 582	Call	10	1	0.87	0.12	2.20	3.07	3.58	1.97	1/4"
155 484 583	Call	10	1 1/4	1.02	0.12	2.28	3.39	4.02	1.97	1/4"
155 484 584	Call	10	1 1/2	1.18	0.12	2.72	3.70	4.37	1.97	1/4"
155 484 585	Call	10	2	1.46	0.12	3.50	4.21	4.88	1.97	1/4"

Stress Less Valve Support



- Designed to properly support GF valves when the connected piping moves, due to thermal expansion and contraction. Smooth linear movement with very low friction. Helps ensure the full design life of piping systems by eliminating stress points.
- For GF metric and IPS valves with integrated support bases. Types 546, 523, 543 horizontal and 5-series diaphragm valves. Manual and actuated.
- Sizes 3/8" - 2" (16mm - 63mm)
- Can be mounted on any flat surface or strut support (shown in image, valve not included)
- Valve support includes base made of PP glass reinforced, and upper slider made of PP. Both are black and UV resistant
- Supplied with 2 stainless steel hex socket screws for mounting valve to upper slider component



Part No.	USD	Size	H	w	L
			(mm)	(mm)	(mm)
155 484 120	Call	16-32mm (3/8 - 1")	43	52	160
155 484 121	Call	40-63mm (1-1/4 - 2")	33	85	160

B

Pipe Bracket Type 061, PP metric



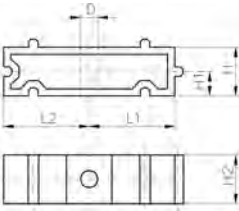
Model:

- Material: Clip and safety clip PP black, UV resistant, bolts galvanized
- d16 - d63: Height designed for Ball Valve Type 546 and 543
- **Minimum order quantity: standard packagings SP**

d (inch)	d (mm)	Part No.	USD
	16	* 167 061 035	1.24
	20	* 167 061 036	1.24
	25	* 167 061 037	1.24
	32	* 167 061 038	2.49
	40	* 167 061 039	2.49
	50	* 167 061 040	3.73
	63	* 167 061 041	3.73
2 ½	75	* 167 061 012	7.25
3	90	* 167 061 013	8.39
4	110	* 167 061 014	9.43
	160	* 167 061 017	18.86

H1 (mm)	H3 (mm)	closest inch (inch)	D1 (mm)	HoH +/- 2mm (mm)	L1 (mm)	D (mm)	H (mm)	L2 (mm)	H2 (mm)	SC
10	16	¾	11	17.0	14	6	27	17	6	M5
10	16	½	11	21.4	17	6	27	19	6	M5
10	16	¾	11	26.9	19	6	30	22	6	M5
10	16	1	11	36.7	24	6	36	27	6	M5
10	22	1 ¼	14	44.4	34	7	44	34	7	M6
10	22	1 ½	14	52.3	37	7	51	37	7	M6
10	25	2	17	66.7	45	9	64	45	10	M8
10	25	2 ½	17		52	9	58	52	10	M8
10	28	3	17		65	9	65	65	10	M8
10	28	4	17		79	9	75	79	10	M8
10	32	6	17		109	9	108	109	10	M8

B



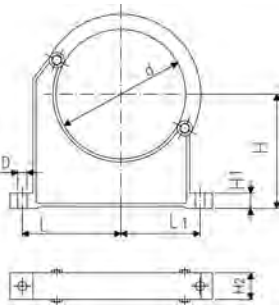
Spacer Type 061, PP

Model:

- For pipe clips Type 061/061H, PP black, UV resistant
- **Minimum order quantity: standard packagings SP**

Inch (inch)	d (mm)	Part No.	USD	HoH +/- 2mm (mm)	D (mm)	L1 (mm)	L2 (mm)	H (mm)	H1 (mm)	H2 (mm)	SC
3/8	16	* 167 061 155	1.24	17.0	6	14	17	20	10	16	M4
1/2	20	* 167 061 156	1.24	21.4	6	17	19	20	10	16	M4
3/4	25	* 167 061 157	1.24	26.9	6	19	22	20	10	16	M4
1	32	* 167 061 158	1.24	36.7	6	24	27	20	10	16	M4
1 1/4	40	* 167 061 159	1.24	44.4	7	34	34	20	10	22	M4
1 1/2	50	* 167 061 160	1.24	52.3	7	37	37	20	10	22	M4
2	63	* 167 061 161	2.49	66.7	9	45	45	20	10	25	M4
2 1/2	75	* 167 061 162	3.73	81.2	9	52	52	20	10	25	M4
3	90	* 167 061 163	4.77	100.0	9	65	65	20	10	28	M4
4	110	* 167 061 164	5.91	127.3	9	79	79	20	10	28	M4
6	160	* 167 061 167	9.43	185.1	9	109	109	20	10	32	M4

B



Pipe Clips Type 060, PP metric

Model:

- Material: Clip and safety clip PP black, UV resistant, bolts galvanized
- **Minimum order quantity: standard packaging SP or gross packaging GP**
- Accidental opening of the safety clip is not possible
- Clip and safety clip are not assembled in the packaging
- Pipes with flanges can be installed directly

d (inch)	d (mm)	Part No.	USD	closest inch (inch)	D (mm)	L (mm)	L1 (mm)	H (mm)	H1 (mm)	H2 (mm)	SC
3	90	* 167 060 038	12.95	3	9	89	71	105	15	33	M8
	110	* 167 060 039	14.09	4	9	94	80	115	15	33	M8
	160	* 167 060 042	29.43	6	11	131	107	148	20	35	M10
	200	* 167 060 019	41.24	8	13	152	120	175	25	39	M12
	225	* 167 060 020	47.05	8	13	165	132	175	25	39	M12
	250	* 167 060 021	62.38	9	13	183	143	200	25	39	M12
	315	* 167 060 023	78.86	12	13	219	172	225	25	39	M12
	355	* 167 060 024	84.46	14	17	275	209	258	30	50	M16
	400	* 167 060 025	91.31	16	17	300	228	288	30	50	M16

Clamps

B

Sanitary Clamp



Size (inch)	Part No.	USD
½	* 150 598 500	9.22
1	* 150 598 501	10.26
2	* 150 598 503	12.64
2 ½	* 150 598 504	15.54
