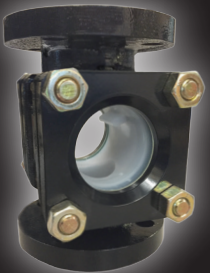


ChemTite® BALL VALVES

PFA Lined for Severe Duty



*Designed, Engineered,
Fluoropolymer Lined and
Assembled in the USA!*



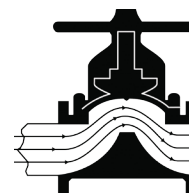
**Bubble-Tight
GUARANTEED!**

FEATURES

- Bubble-Tight Design
- Heavy Duty PFA Liner Resists Cracking
- Dovetail Locking Grooves for PFA Retention
- Size Range: 1" to 6" (Full Standard Port Design)
- Pressure Rating: Full Vacuum to 250 psi (17.23 bar)
- Operating Temperature: (-)20°F to (+)400°F
- Separate Ball and Stem Reduces Packing Side Loading
- Anti-Blowout Stem
- Cavity Filled Space Around Ball
- ASME B16.10 with ISO 5211 Mounting Pad
- Lockable Handle and Static Ground Spring (standard)
- Resistant To:
 - All acids
 - All solvents
 - All bleach solutions
 - All phenols
 - All caustics
 - All peroxides
 - All organic and inorganic chlorides & sulfates

THE ORIGINAL IN THE USA

Since 1931, Hills-McCanna® has earned a reputation for innovative products that serve demanding applications better than before. Today, the Hills-McCanna® legacy continues with the ChemTite® series. ChemTite® products are built with American quality for peace of mind and dependability in tough chemical applications.



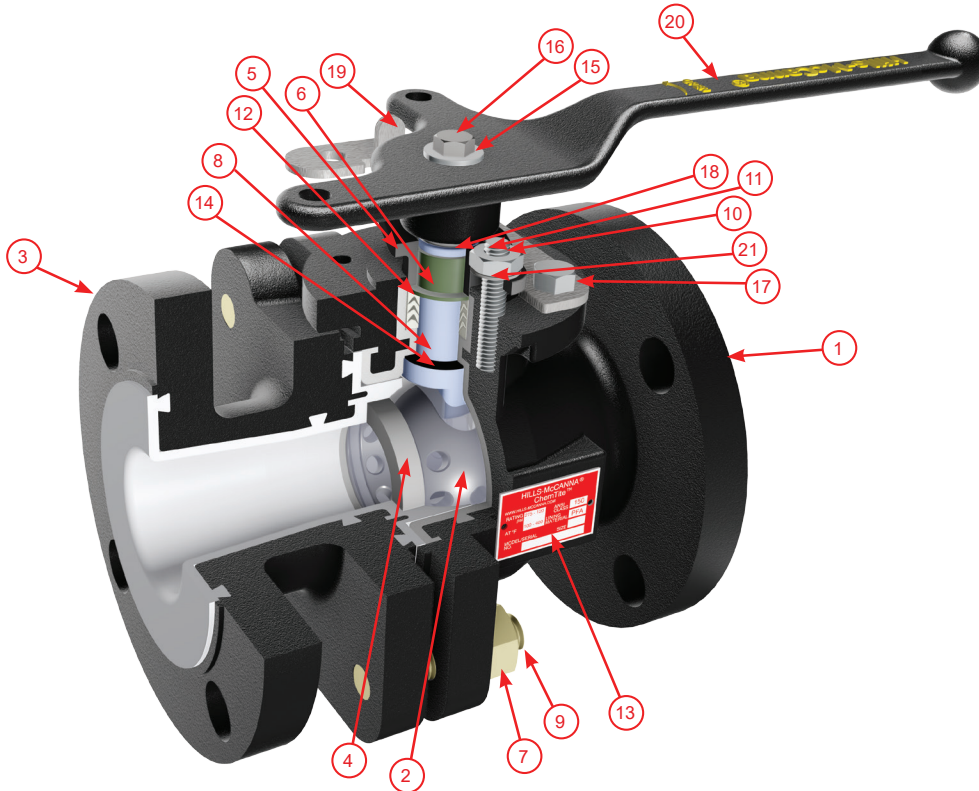
Phone: (616)554-3900

Fax: (616)554-9308

Hills-McCanna®
an ANDRONACO INDUSTRIES company

ChemTite[®] BALL VALVES

PFA Lined for Severe Duty



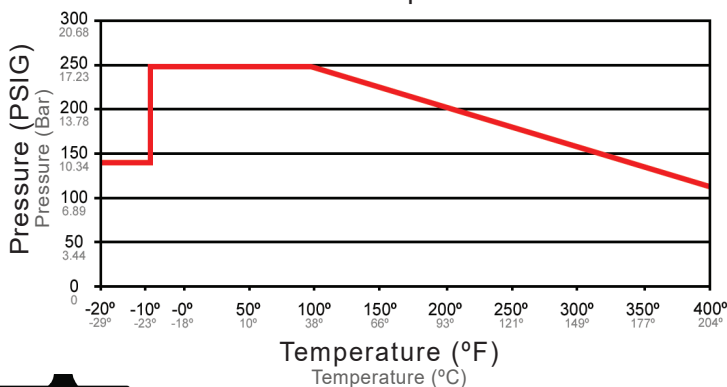
Parts List

ITEM	QTY	DESCRIPTION	MATERIAL
1	1	VALVE BODY	PFA LINED ASTM A395 DCI
2	1	BALL	PFA LINED ASTM A351, GRADE CF8 S.S.
3	1	SIDE PIECE	PFA LINED ASTM A395 DCI
4	2	SEAT	VIRGIN PTFE
5	1	PACKING GLAND	ASTM A351, GRADE CF8 S.S.
6	1	RADIAL BEARING	PTFE / GRAPHITE
7	4	HEX NUT	ASTM A194, YELLOW ZINC PLATED GR.2H
8	1	STEM	PFA LINED, GR. 2205 UNS S31803
9	4	STUD	ASTM A193, YELLOW ZINC PLATED GR.B7
10	2	HEX NUT	18-8 STAINLESS STEEL
11	2	STUD	304 STAINLESS STEEL
12	1	V-PACKING	VIRGIN PTFE
13	1	NAMEPLATE	STAINLESS STEEL
14	1	THRUST BEARING	PTFE / GRAPHITE
15	1	WASHER	304 STAINLESS STEEL
16	1	HEX BOLT	316 STAINLESS STEEL
17	2	HEX BOLT	18-8 STAINLESS STEEL
18	1	GROUNDING SPRING	18-8 STAINLESS STEEL
19	1	WRENCH STOP PLATE	304 STAINLESS STEEL
20	1	WRENCH HANDLE	ASTM A395 DCI
21	2	INTERNAL TOOTH LOCK WASHER	STAINLESS STEEL 18-8

Actuator Sizing

VALVE SIZE	TORQUES @ MAX. DIFF. PSI
1"	72 in-lbs
1 1/2"	78 in-lbs
2"	285 in-lbs
3"	380 in-lbs
4"	917 in-lbs
6"	1405 in-lbs

Pressure / Temperature Curve



Cv Data

VALVE SIZE	FULL OPEN Cv
1"	43
1 1/2"	127
2"	182
3"	350
4"	610
6"	1330



Hills-McCanna[®] information is based on technical data and testing that Hills-McCanna[®] believes to be reliable and is subject to change without notice. The information is intended for use by persons having technical skill, and at their own discretion and risk. Since conditions of product are outside of Hills-McCanna[®] control, Hills-McCanna[®] makes no warranties, express or implied, and assumes no liability in connection with any use of this information. Hills-McCanna[®] is a registered trademark of Hills-McCanna LLC.

ChemTite[®]
BUBBLE-TIGHT GUARANTEED!