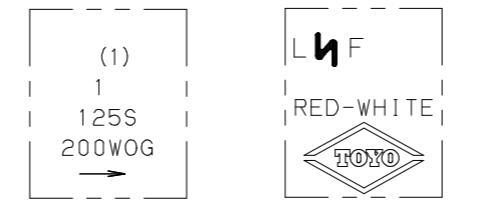
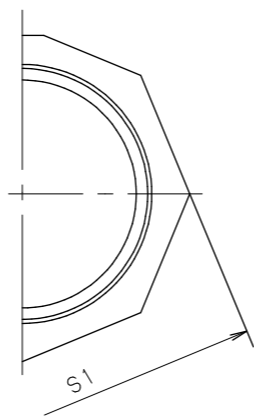


MARKING ON THE NAME PLATE



ONE SIDE THE OTHER SIDE
MARKING ON THE BODY



DIMENSIONS. UNIT : mm

NOMINAL SIZE	d2	H	L	S1
1/2	NPT 1/2	40	56	28
3/4	NPT 3/4	49	70	34
1	NPT 1	58	80	41
1.1/4	NPT 1.1/4	71	95	50
1.1/2	NPT 1.1/2	80	110	57
2	NPT 2	95	128	70

NOTE (1) VALVE SIZE IDENTIFICATION.
(2) CAC911 IS LEAD FREE BRONZE.
(3) KSB-4XA AND KSB-4XC ARE LEAD FREE BRASS.

NO	NAME OF PARTS	QTY	MATERIALS	SPECIFICATIONS
1	BODY	1	CAST BRONZE (CAC911 (2))	CDA No. C89530
2	CAP	1	FORGED BRASS (KSB-4XA (3))	CDA No. C46750
4	DISC	1	PTFE	
12	DISC HOLDER	1	CAST BRONZE (CAC911 (2))	CDA No. C89530
13	DISC NUT	1	STAINLESS STEEL	ASTM A 313 TYPE304 (SIZE 1/2-1)
		1	FORGED BRASS (KSB-4XA (3))	CDA No. C46750 (SIZE 1 1/4-2)
17	HINGE PIN	1	COPPER	CDA No. C11000
18	PLUG	1	BRASS ROD (KSB-4XC (3))	CDA No. C46750

STANDARD	FACE TO FACE OR END TO END	TOYO STANDARD
	END CONNECTION	ASME B1.20.1
	WALL THICKNESS	TOYO STANDARD
	PRESSURE TEST	TOYO STANDARD
FIGURE		(RW02) AKYRNT/NO.236TLF

CLASS 125 LEAD FREE CAST BRONZE
SWING CHECK VALVES

SCREW CAP, Y PATTERN, AND SCREW ENDS.

DATE APPD	JUN.18.'14	DRAWING NO	△		
APPD BY	T. KOYANAGI	813-000524	△		
CHKD BY	K. NAKAI		△		
DSGND BY	N. KAMA		△		
DRAWD BY	Y. WATANABE		REV-00	MARK	DATE



TOYO VALVE CO., LTD.