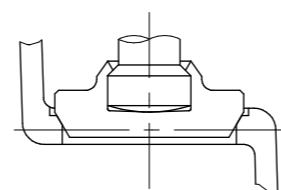
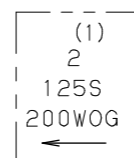


UP TO SIZE 1/2



UP TO SIZE 1



ONE SIDE THE OTHER SIDE  
MARKING ON THE BODY

DIMENSIONS.

UNIT: mm

NOMINAL SIZE	d2		H	D1	L	G		
	MAX.	MIN.						
1/2	16.03	15.93	76	60	64	12.7		
3/4	22.38	22.28	98	70	84	19.1		
1	28.75	28.65	108	80	100	23.1		
1.1/4	35.10	35.00	137	90	115	24.6		
1.1/2	41.48	41.35	160	100	130	27.7		
2	54.18	54.05	180	115	155	34.0		

NOTE (1) VALVE SIZE IDENTIFICATION.  
(2) CAC911 IS LEAD FREE BRONZE.  
(3) KSB-4XA AND KSB-4XC ARE LEAD FREE BRASS.

NO	NAME OF PARTS	QTY	MATERIALS	SPECIFICATIONS
1	BODY	1	CAST BRONZE (CAC911 (2))	CDA No. C89530
2	BONNET	1	FORGED BRASS (KSB-4XA (3))	CDA No. C46750
3	STEM	1	BRASS ROD (KSB-4XC (3))	CDA No. C46750
4	DISC	1	BRASS ROD (KSB-4XA (3))	CDA No. C46750 (SIZE1/2-1)
		1	CAST BRONZE (CAC911 (2))	CDA No. C89530 (SIZE11/4-2)
5	LOCK NUT	1	FORGED BRASS (KSB-4XC (3))	CDA No. C46750
6	PACKING NUT	1	FORGED BRASS	B283 NO. C37700
7	GLAND	1	BRASS ROD	B16
8	GLAND PACKING	1	ARAMID FIBERS GRAPHITE	
9	HAND WHEEL	1	ALUMINUM DIE-CAST	B85
10	WHEEL NUT	1	BRASS ROD	B16
16	NAME PLATE	1	ALUMINUM	

STANDARD	FACE TO FACE OR END TO END	TOYO STANDARD
	END CONNECTION	ASME B16.18
	WALL THICKNESS	TOYO STANDARD
	PRESSURE TEST	TOYO STANDARD
FIGURE		(RW02) C125CN / No.212ALF

CLASS 125 LEAD FREE CAST BRONZE  
GLOBE VALVES

SCREWED BONNET, INSIDE SCREW AND SOLDER-JOINT ENDS.

DATE APPD	JUN.18.'14	DRAWING NO	△		
APPD BY	T. KOYANAGI	812-001588	△		
CHKD BY	K. NAKAI		△		
DSGND BY	N. KAMA		△		
DRAWN BY	Y. WATANABE		REV-00	MARK	DATE



TOYO VALVE CO., LTD.

**TOYO**